



PRODUCT CATALOG



Item	Page	Item	Page	Item	Page
001 Flat 45° Duct Angle	11	100 Shortway Angle 45°	19	223 Twist-In Collar with Scoop	22
002 Flat 90° Duct Elbow	11	101B Black Pipe	31	224 Twist In Collar with Scoop & Damper	22
003 Vertical 45° Duct Angle	11	101 Round Pipe	9	225 Ductboard Twist-In Collar	24
004 Vertical 90° Duct Elbow	11	101 USP Round Pipe	29	226 Ductboard Twist-In Collar with Damper	24
005 Duct End Cap	12	105 Shortway Elbow 90°	19	227 Ductboard Twist-In Collar with Scoop	24
006 Reverse End Cap	12	111 Oval Pipe	16	228 Ductboard Twist-In Collar with Scoop & Damper	24
007 Trunk Tap Start Collar	11	112 Trunk Adapter	13	229 End Cap	19
009 Trunk Reducer	12	113 Stack Offset	19	230 Starting Collar	19
10B Black Trim Collar	31	114C Center Transition Collar	13	231 Tapered Twist-In Collar	22
011 Duct Damper	14	117 Reducing Adapter	13	232 Tapered Twist-In Collar with Damper	22
012 Start Collar with Crimp	21	121 Side Take-Off	21	234 Tapered Twist-In Collar with Scoop & Damper	22
013 Start Collar without Crimp	21	123 Side Take-Off	21	235 Conical Flowtite Plain	25
014 Ductboard Start Collar with Crimp & Bead	24	124 Start Collar with 4" Body	22	236 Conical Flowtite with Damper	25
15B Black Drawband	31	125 Start Collar with 4" Body & Damper	22	240 Side Take-Off with Damper	28
015 Drawband	10	126 Start Collar with 6" Body	22	241 Side Take-Off	28
016 Drawband with Bolts	10	127 Start Collar with 6" Body & Damper	22	242 Side Take-Off with Damper	28
017 Unassembled Dampers	10	128 Damper Section	11	243 Side Take-Off	28
018 Assembled Dampers	10	129 Start Collar with 6" Body Scoop & Damper	22	259CRD Elbow Boot 90° with Ceiling Radiation Damper	29
019 Double Sided Dampers	10	130 Take-Off with Gasket	25	259 Elbow Boot	7
020 Ductboard Start Collar with Damper, Crimp & Bead	24	131 Take-Off with Gasket and Damper	25	265 Top Take-Off with Adjustable Collar	21
21B Black Tee Cover with Crimp	31	132 Side Take-Off with 0" Rise	21	269 Basement Ceiling Boot	6
021 Tee Cap with Crimp	8	133DB Ductboard Take-Off with 1" Rise	24	272 Insulated Box with Flange	6
22B Black Tee Cover without Crimp	31	133 Take-Off with 1" Rise	21	273 Insulated Box With Flange & Gasket	6
022 Tee Cap without Crimp	8	134 Take-Off with 2" Rise	21	274 Insulated Side Out Box	6
024 Rain Cap	10	136 Adjustable Round Take-Off	21	275 Insulated Side Out Box with Gasket	6
025 Ductboard Start Collar with Scoop & Damper	24	136DB Adjustable Round Take-Off with 1" Rise	24	276 Insulated Box with Duct Board Top	6
30B Black Slip Connector	31	137 Plenum Take-Off with Gasket	25	277 Insulated Box With Db Top & Gasket	6
031B 6-9" Adjustable Black Flue Cover	31	146 Steel Stack Collar Triple Tabs	22	279 Elbow Boot with 25" Rails	10
044 Ductboard Snap Collar	23	147 Steel Stack Collar Triple Tabs with Damper	22	280 Straight Boot with 25" Rails	10
045 Ductboard Snap Collar Assembled	23	150 90° Elbows	9	291 Pivot Lock Take-Off	21
046 Ductboard Snap Collar Assembled with Damper	23	150B Black Elbow	31	292 Half Tab Take-Off with Crimp	21
049 Ductboard Snap Collar with 1" Ring	23	151 45° Angles	9	293 Adjustable Take-Off with 1-3/4" Rise	21
051 Pour Sleeve	29	152 Wall Stack	19	297 Elbow Flowtite	25
055 Exhaust Vent with Damper	10	153 Rectangular Duct	13	298 EZ Turn Ductboard Take-Off	24
056 Fresh Air Intake	10	155 Oval Flat Elbow	16	299 EZ Turn Take-Off	21
060 Universal Boot	12	156 Oval Vertical Elbow	16	301 Tee	8
068 Filter Rack Side Load	12	157 Oval Flat Angle	16	320 Adjustable Plenum with Top	15
069 Filter Box Top Load	12	158 Oval Vertical Angle	16	344 Ductboard Snap Collar with Sealant	23
070 Cold Air Boot (Top Load)	12	163 Double Take-Off	21	345 Ductboard Snap Collar Assembled with Sealant	23
072 Return Air Box with 1" Filter Rack	12	172 Transformer	13	346 Ductboard Snap Collar Assembled with Damper with Sealant	23
072 Return Air Box with 5" Filter Rack	12	193 Telescopic Take-Off with 1" Rise	23	348 Ductboard Snap Collar with Scoop, Damper and Sealant	23
073 Return Air Box	12	194 Telescopic Take-Off with 2" Rise with Ductboard Tabs	23	349 Ductboard Snap Collar with 1" Ring with Sealant	23
074 Return Air Support Box	12	200 2-Piece Plenum with Top	15	365 Top Take-Off with 1-1/4" Rise	21
075 Filter Frame with Screw Holes	14	201 Reducing Tee	8	400 4-Piece Knockdown Plenum with Top	15
076 Cold Air Boot (Side Load)	12	210 Flat Angle	19	401 Straight Tee	8
080 Adjustable Pipe Hangers	10	211 Flowtite with Wide Flange	25	412 Insulated Coil Box	12
081 Duct Hanger	14	212 Flowtite with Wide Flange with Damper	25	422 Wye Branch	8
082 Pipe EZ Hanger	26	215 Flat Elbow	19	424 Tee	8
083 Drain Pan	15	217 Flowtite Plain	25	425 Wye	8
086 Canvas Connector	11	218 Flowtite with Damper	25	430B Black Reducer with Crimp	31
091 Flat 45° Duct Angle Square Throat	11	219 Flowtite with Scoop	25		
092 Flat 90° Duct Elbow 2-1/2" Square Throat	11	220 Flowtite with Scoop & Damper	25		
093 Vertical 45° Duct Angle Square Throat	11	221 Twist-In Collar	22		
094 Vertical 90° Duct Elbow 2-1/2" Square Throat	11	222 Twist-In Collar with Damper	22		

PRODUCT INDEX

Item	Page	Item	Page	Item	Page
430 Tapered Reducer	9	700 Double End Drive Cleat	14	8217 Flowtite	29
431B Black Reducer without Crimp	31	704 Top Load Cold Air Drop Kits	15	8218 Flowtite with Damper	29
431 Tapered Reducer/Incraser without Crimp	9	705 Top Load Cold Air Drop Kits	15	8221 Spin In Collar	26
432B Black Incraser with Crimp	31	708 Top Load Cold Air Drop Kit	15	8222 Spin In Collar with Damper	26
432 Tapered Incraser	9	709 Cold Air Drop Kit	15	8235 Conical Flowtite	25
441 Low Profile Reducer	9	710 Cold Air Drop Kit	15	8236 Conical Flowtite with Damper	25
450 Shortway Reducer	9	711 Cold Air Drop Kit	15	8240 Side Take-Off with Damper	28
451 Shortway Reducer/Incraser without Crimp	9	712 Cold Air Drop Kit	15	8241 Side Take-Off Plain	28
452 Shortway Incraser	9	713 Cold Air Drop Kit	15	8244 Center Take-Off with Damper	28
470 Top Ceiling Box	6	714 Cold Air Drop Kit	15	8245 Center Take-Off	28
471 Side Ceiling Box	6	716 Cold Air Drop Kit	15	8249 Spiral Elbow Boot	28
472 6" Blind Floor Box	7	720 Cold Air Drop Kit	15	8424 Spiral Tee No Crimp	26
473 12" Blind Floor Box	7	721 Canvas Connector Drop Kits with Dual 1-2" Racks	15	8431 Tapered Reducer without Crimp	27
474 Ceiling Head with Ears	7	722 Canvas Connector Drop Kits with Dual 1-2" Racks	15	8434 Spiral Eccentric Reducer	28
478 Square to Round Transition	7	744 Register Pan with 1" Flanges	7	8601 Perimeter Saddle Tee	26
485 Oval Side Ceiling Box	17	745 Register Pan with Recessed Flanges	7	8603 Saddle Tee with Gasket	25
496 Ceiling Diffuser Elbow	7	746 Register Pan with Recessed Flanges & Ears	7	8604 Saddle Tee with Gasket & Damper	25
498 Tapered Diffuser 17" Plate	7	747CRD Straight Boot with Ceiling Radiation Damper	29	8605 Spiral Shoe Tap	27
500 Plenum with Removable Front Panel with Top	15	747 Register Pan No Flanges	7	8641 Spiral Wye	27
512 Oval Start Collar	16	748 Square to Round Transition	14	8772 Spiral Straight Boot	28
513 Oval Start Collar without Crimp	16	772CRD Straight Boot with Ceiling Radiation Damper	29	8932 Perimeter Saddle	26
514 Boot Rail 26"	7	772 Straight Boot	7	8993 Spiral Connector	27
515 Standing S Cleat	14	825B Black Tee	31	9012 PVC Start Collar with Crimp	26
516 S Cleat	14	825 Full Flow Tee	8	9021 PVC Cap	27
517 Drive Cleat	14	905 Stackhead	20	9101 PVC Spiral Pipe	26
518 Single Joist Panning	14	917 Stackhead without Ears 9" Throat	20	9150 PVC Spiral Elbow	26
519 Start Collar	13	923 Plaster Frame without Clips	7	9151 PVC Spiral Angle	26
529 Wye Branch	8	925 Stackhead 3-1/2" Throat	20	9249 PVC Elbow Boot	28
571 Center End Stack Boot	19	926 Stackhead 7" Throat	20	9424 PVC Spiral Tee No Crimp	26
572 Straight Stack Boot	19	927 Stackhead with Ears 9" Throat	20	9431 PVC Tapered Reducer without Crimp	27
573 Tapered 90° Round To Oval Boot	16	928 Stackhead 12" Throat	20	9434 PVC Eccentric Reducer	28
574 Round To Oval 90° Boot	16	929 Snap-On Rail	7	9601 PVC Perimeter Saddle Tee	26
575 Elbow Stack Boot	19	930 Cold Air Frame	14	9605 PVC Spiral Shoe Tap	27
576 Oval To Round 90° Tapered Boot	16	931 Cold Air Frame without Tabs	14	9641 PVC Wye	27
578 Oval To Round 90° Boot	17	935 Double Stackhead 1-3/8" Flange 3-1/2" Throat	20	9747 PVC Register Pan No Flanges	28
579 Round To Oval 45° Boot	17	966 Oval Stackhead with Ears 7" Throat	18	9772 PVC Straight Boot	28
580 Oval Adapter	17	967 Oval Stackhead with Ears 9" Throat	18	9993 PVC Spiral Connector	27
582 45° Oval Register Box	17	968 Oval In-line Register Box 9" Throat	17	Aluminum Adjustable Elbow	30
583 90° Oval Register Box	17	969 Oval Double Stackhead 9" & 12" Throat	18	Aluminum Roof Cap with Screen & Damper	30
585 Round To Oval Boot 90° No Crimp	18	970 Hanging Strap	10	Aluminum Snap Lock Pipe	30
586 Oval End Boot	18	984 Storm Collar	10	Aluminum Wall Cap	30
587 Oval Straight Boot	18	987 Oval Stackhead 12" Throat	18	Aluminum Wall Cap with Spring Damper	30
588 Oval Reverse Boot	18	988 Oval In Line Register 12" Throat	17	DBX1000M White Metal Dryer Box	30
589 Oval Fire Stop	18	993 Flex Connector with Crimp	10	DBX1000 White Plastic Dryer Box	30
590 Left End Stack Boot	20	994 Flex Connector with 6" Body	10	DBXMT White Metal Ring	30
591 Right End Stack Boot	20	996 Pitch Pocket	11	Flexible Aluminum Duct	30
593 90° Oval Toe Kick Boot	18	997 Angles	11	Hood with Tail Piece	30
597B Black Oval Straight Boot	31	8012 Start Collar Spiral with Crimp	26	Plastic Hood with Removable Screen & Tail Piece	30
603 Saddle Tee with Gasket	25	8021 Spiral Cap	27	Plastic Louver Vent	30
604 Saddle Tee with Gasket & Damper	25	8101 Spiral Pipe	26		
641 Wye Branch	8	8150 Spiral Elbow	26		
671 End Boot	7	8151 Spiral Angle	26		
681 Left End Boot	7				
691 Right End Boot	7				



Heating & Cooling Products manufactures and distributes superior quality sheet metal products. These products include pipe, elbows, boots, rectangular duct, duct fittings, wall stack, oval, black stove pipe and fittings, spiral pipe, spiral PVC pipe and fittings for the HVAC professional. These products serve the residential, multi-family, and light commercial HVAC markets.

Heating & Cooling Products was founded in 1955 by the Bluestones as LB Manufacturing. The manufacturing facility was located in Cleveland, Ohio. The primary focus at that time was selling to the HVAC contractor. LB Manufacturing relocated in 1977 to our current location in Mount Vernon, Ohio.

The year 1982 brought about a major change in the company as it was purchased by the Blaushilds. In order to grow, the decision was made to sell the wholesale, hardware, retail distribution channels. The name was changed to Heating & Cooling Products (HCP). Growth again brought about expansion with the opening in 1984 of our Byesville, Ohio facility.

In 1999 a new, steel receiving dock and more warehousing space was added to our Mount Vernon location. Byesville facility was expanded to its current size in 2005.

The Heating and Cooling Products continues to evolve with the market demand. HCP has broadened product offerings and continues to look for ways to improve quality, service, and meet the growing needs of customers. Today Heating & Cooling Products proudly manufactures and distributes products in over 25 states and Canada.

Given our past history, values, family ownership, and solid foundation, Heating & Cooling Products looks forward, poised for growth, as we partner with our customers, providing them with quality products and excellent service at a competitive price.



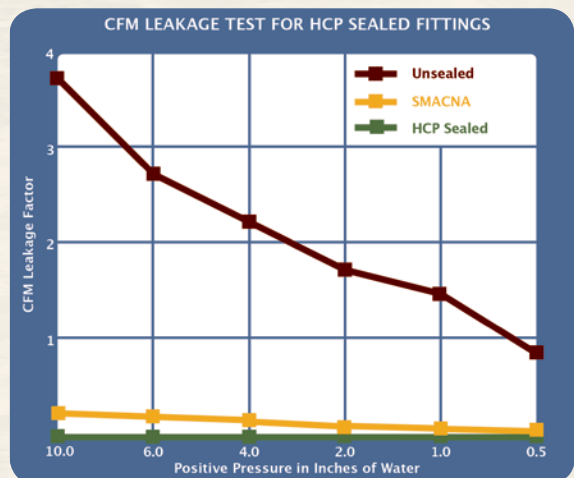
Save Time and Energy with HCP SEALED FITTINGS



Ask for Sealed

HCP Sealed Fittings are proven to reduce CFM leakage.

- All seams are sealed. No need to seal fittings in the field.
- Sealed to meet UL 181 B-M.
- Significantly lowers system CFM loss during closed system pressure testing.
- Sealant is suitable for SMACNA pressure classes of 1/2", 1", 2", 4", 6" and 10" w.g.



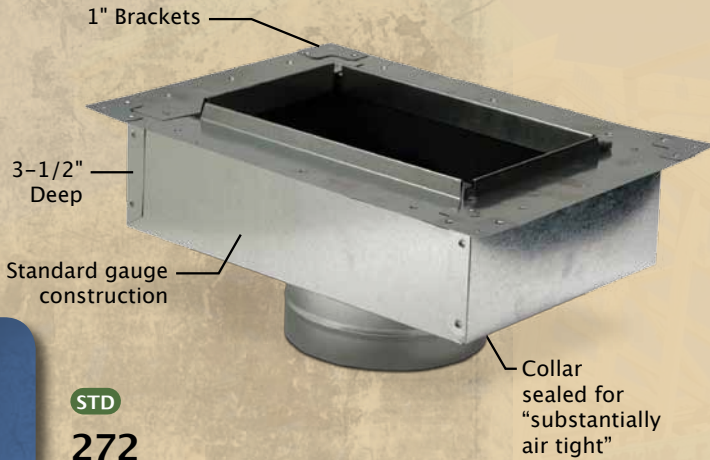
Ask for Sealed

This icon denotes H&C Products that are currently offered with "Sealed Fitting". Please look for the "Ask for Sealed" icon and call for other custom sealed fittings.

SEALED FITTINGS

REGISTER BOOTS & PANS

INSULATED BOX FOR R-6 INSULATION



STD
272
Insulated Box with Flange
Size Range:
 4" x 8" x 4" - 8" x 12" x 8"

- Lined with fiberglass ductliner - R-6 Standard.
- Standard gauge construction.
- 3-1/2" Deep.
- 1" Brackets for boot rail applications.
- Round collars are sealed.

STD



273
Insulated Box with Flange & Gasket
Size Range:
 4" x 8" x 4" - 8" x 14" x 9"

STD



274
Insulated Side Out Box
Size Range:
 4" x 10" x 5" - 6" x 12" x 8"

STD



275
Insulated Side Out Box with Gasket
Size Range:
 8" x 8" x 6" - 8" x 8" x 7" - 8" x 8" x 8"

STD



277
Insulated Box with Duct Board Top & Gasket
Size Range:
 8" x 12" - 14" x 14"

276
Insulated Box with Duct Board Top
Size Range:
 4" x 8" - 18" x 18"

26 28 STD **Ask for Sealed**



470
Top Ceiling Box
Size Range:
 6" x 6" x 4" - 18" x 18" x 18"

26 28 STD **Ask for Sealed**



471
Side Ceiling Box
Size Range:
 6" x 6" x 3" - 14" x 14" x 10"

STD **Ask for Sealed**



269
Basement Ceiling Boot
Size Range:
 4" x 6" x 6" - 8" x 12" x 8"

REGISTER BOOTS

REGISTER BOOTS & PANS

REGISTER BOOTS

28 STD ECONO

Ask for Sealed



259
Elbow Boot

Size Range:
2-1/4" x 10" x 4"
12" x 12" x 10"

STD ECONO

Ask for Sealed



772
Straight Boot

Size Range:
2-1/4" x 10" x 4" - 4" x 14" x 8"

Ask for Sealed



671 STD ECONO
End Boot

Size Range:
2-1/4" x 10" x 4" -
8" x 12" x 8"

681 STD
Left End Boot

Size Range:
2-1/4" x 10" x 5" - 4" x 14" x 7"

26 28 STD

Ask for Sealed



472
6" Blind
Floor Box

Size Range:
4" x 8" - 18" x 18"

28 STD

Ask for Sealed



474
Ceiling Head
with Ears

Size Range:
6" x 6" x 5" - 6" x 12" x 6"

26 STD

Ask for Sealed



478
Square to Round Transition

Size Range:
4" x 10" x 4" - 22" x 22" x 20"

28 STD Ask for Sealed



744
Register Pan
with 1"
Flanges

Size Range:
4" x 8" x 4" - 14" x 12" x 14"
STD up to 12"

745 28 STD
Register Pan with
Recessed Flanges

Size Range: 4" x 10" x 6" - 12" x 12" x 10"
STD up to 8"

28 STD



498
Tapered Diffuser 17" Plate

Size Range:
5" x 6" - 6" x 8" - 8" x 10"

STD



496
Ceiling Diffuser Elbow

Size Range:
6" x 6"

746 STD

Register Pan with
Recessed Flanges & Ears

Size Range: 4" x 6" x 6" - 6" x 12" x 8"

747 STD

Register Pan No Flanges

Size Range: 6" x 6" x 4" - 14" x 14" x 8"

26 STD



514
Boot Rail 26"

Size Range:
26"

STD



923
Plaster Frame
without Clips

Size Range:
4" x 8" x 26" - 8" x 12" x 26"

26 STD



929
Snap-On Rail

Size Range:
4" x 8" - 8" x 12"

WYES & TEES

24 26 28



021
Tee Cap with Crimp
Size Range:
3" - 24"
14" & above - 24

24 26 28



022
Tee Cap without Crimp
Size Range:
3" - 24"
14" & above - 24

26 28 STD

Ask for Sealed



201
Reducing Tee
Size Range:
4" x 3" x 3" - 16" x 14" x 14"

26 28 STD

Ask for Sealed



301
Tee
Size Range:
5" x 5" x 6" - 10" x 10" x 12"

24 26 STD

Ask for Sealed



401
Straight Tee
Size Range:
3" x 3" x 3" - 16" x 16" x 14"

26 28

Ask for Sealed



422
Wye Branch
Size Range:
4" x 4" x 4" - 14" x 14" x 6"

24 26 STD

Ask for Sealed



424
Tee
Size Range:
4" - 24"

24 26 STD

Ask for Sealed



425
Wye
Size Range:
4" x 3" x 3" - 18" x 18" x 18"

24 26 28 STD

Ask for Sealed



529
Wye Branch
Size Range:
3" x 3" x 3" - 14" x 14" x 12"

26 28 STD

Ask for Sealed



641
Wye Branch
Size Range:
3" x 3" x 3" - 16" x 14" x 14"

Ask for Sealed

24 26 28 STD

825
Full Flow Tee
Size Range:
3" - 12"



REDUCERS & INCREASERS

24 26 28 STD

Ask for Sealed



431
Tapered Reducer/
In creaser
without Crimp
Size Range:
4" x 3" - 24" x 20"

430
Tapered Reducer
Size Range:
4" x 3" - 22" x 18"

432
Tapered In creaser
Size Range:
3" x 4" - 18" x 22"

26 GA

Ask for Sealed



441
Low Profile Reducer
Size Range:
4" x 3" - 16" x 14"

24 26 28 STD

Ask for Sealed



451
Shortway Reducer/
In creaser
without Crimp
Size Range:
4" x 3" - 18" x 14"

450
Shortway Reducer
Size Range:
4" x 3" - 18" x 14"

452
Shortway In creaser
Size Range:
3" x 4" - 14" x 18"

PIPE & ELBOWS

24 26 28 STD ECONO



101
Round Pipe
Sizes:
3" - 24"
Lengths:
2', 3', 4', 5' and 10'

Building just got greener!

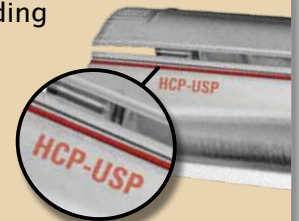
MODEL 101U Ultra Seal Pipe

Self-sealing FIP gasket saves material and labor while still exceeding the SMACNA standards.

Eliminates need for UL 181 approved tape or mastics.

Provides cost effectiveness and ease of installation.

28, 26 and 24 gauge construction available in 2' or 5' lengths and sizes - 4" - 20".



REDUCERS/PIPE/ELBOWS

24 26 28 STD



150
90° Elbows
Size Range:
3" - 24"
Please note:
18" & larger sizes are non adjustable

24 26 28 STD



151
45° Angles
Size Range:
3" - 24"
Please note:
18" & larger sizes are non adjustable

ACCESSORIES

28 STD



015
Drawband
Size Range:
4" - 16"

016 26 28 STD
Drawband with Bolts
Size Range:
4" - 16"

24 26 28



018
Assembled
Dampers
Size Range:
4" - 16"

017
Unassembled Dampers
Size Range:
4" - 16"

24 26 28



019
Volume
Damper
Size Range:
4" - 18"

28



080
Adjustable Pipe
Hangers
Size Range: 12" - 18"

28 STD



055
Exhaust Vent with
Damper
Size Range:
4" - 10"

28 STD



056
Fresh Air Intake
Size Range:
4" - 10"

28 STD



993
Flex Connector
with Crimp
Size Range:
3" - 20"
3-8" STD - 9" & above 28

28 STD



994
Flex
Connector
with 6" Body
Size Range:
3" - 20"
3-8" STD - 9" & above 28

26 28



024
Rain Cap
Size Range: 3" - 18"

24



984
Storm Collar
Size Range: 3" - 16"

970 Hanging Strap Size Range: 1", 1-1/2", 2" by 100' & 200' rolls

STD



279
Elbow Boot with 25" Rails
Size Range:
4" x 10" x 6" - 4" x 12" x 8"
8" x 8" x 6" - 8" x 8" x 8"

STD



280
Straight Boot with 25" Rails
Size Range:
4" x 6" x 4" - 8" x 8" x 8"

ACCESSORIES & DUCT

28 26 24



128
Damper Section
 Size Range:
 4" x 7" - 7" x 7"
 5" x 12" - 16" x 12"

26



996
Pitch Pocket
 Size Range:
 4" x 4"

24 26 28 STD



997
Angles
 Size Range:
 1/2" x 1/2" x 28"
 3/8" x 2" x 96"

26 28



001
Flat 45° Duct Angle
 Size Range:
 8" x 8" - 30" x 12"

091
**Flat 45° Duct Angle
 Square Throat**
 Size Range:
 8" x 8" - 30" x 12"

24 26 28



002
**Flat 90°
 Duct Elbow**
 Size Range:
 6" x 6" - 30" x 12"

092
**Flat 90° Duct Elbow 2-1/2"
 Square Throat**
 Size Range:
 8" x 8" - 30" x 12"

26 28



003
Vertical 45° Duct Angle
 Size Range:
 8" x 8" - 30" x 12"

093
**Vertical 45° Duct Angle
 Square Throat**
 Size Range:
 8" x 8" - 30" x 12"

24 26 28



004
Vertical 90° Duct Elbow
 Size Range:
 6" x 6" - 30" x 12"

094
**Vertical 90° Duct Elbow
 2-1/2" Square Throat**
 Size Range:
 8" x 8" - 30" x 12"

28



086
Canvas Connector
 Size Range:
 10" x 8" - 25" x 10"

26 28



007
Trunk Tap Start Collar
 Size Range:
 8" x 8" - 30" x 12"

ACCESSORIES/DUCT

DUCT & FITTINGS

26 28



005
Duct End Cap

Size Range:
8" x 8" - 30" x 12"

006
Reverse End Cap

Size Range:
8" x 8" - 30" x 12"

24 26 28



009
Trunk Reducer

Size Range:
10" x 8" - 8" x 8" / 30" x 10" - 30" x 8"

26



060
Universal Boot

Size Range:
24" x 8" x 27" - 25" x 12" x 27"

24 26 28



069
Filter Box
Top Load

Size Range:
16" x 20" x 4" - 20" x 25" x 7"

068
Filter Rack Side Load

Size Range:
16" x 20" x 4" - 20" x 25" x 7"

24



073
Return Air Box

Size Range:
15-1/2" x 22" x 18" - 24-1/2" x 28" x 20"

24



074
Return Air Support Box

Size Range:
10" x 28" x 30" - 8" x 24" -
12" x 28" x 40" - 12" x 24"

26



076
Cold Air Boot
(Side Load)

Size Range:
14" x 20" - 20" x 10" / 20" x 25" -
25" x 10"

070
Cold Air Boot
(Top Load)

Size Range:
8" x 20" - 16" x 20" -
12" x 20" - 16" x 20"

24



072
Return Air
Box with 5"
Filter Rack

Size Range:
14-3/4" x 28-1/2" x 20" - 25" x 21" x 20"

072
Return Air Box with
1" Filter Rack

Size Range:
14-1/2" x 20-1/2" x 22" - 25" x 21" x 20"

24



412
Insulated Coil Box

Size Range:
21-1/2" x 25" x 26"

DUCT/FITTINGS

DUCT & FITTINGS

26 28



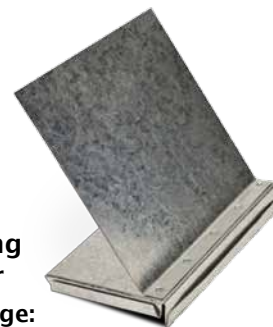
114C
Center Transition Collar
Size Range:
12" x 8" - 10" x 10" - 24" x 10" - 12" x 21"

26 28



112
Trunk Adapter
Size Range:
2" x 8" - 10" x 10"

26



117
Reducing Adapter
Size Range:
2" x 8" - 4" x 8" - 6" x 8"

26 28 STD



Ask for Sealed

172
Transformer
Size Range:
4" x 8" x 6" - 12" x 12" x 12"

26 28



519
Start Collar
Size Range:
8" x 8" - 24" x 10"

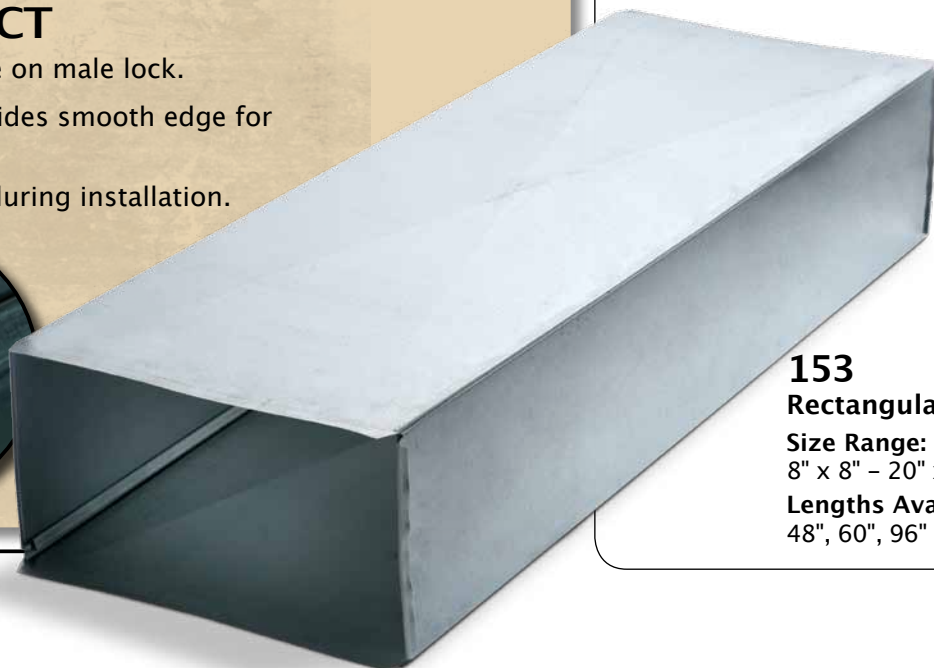
Product Improvement

SAF-T-LOK DUCT

- Eliminates the raw edge on male lock.
- New roll over hem provides smooth edge for added safety.
- Reduced risk of injury during installation.



24 26 28



153
Rectangular Duct
Size Range:
8" x 8" - 20" x 22"
Lengths Available:
48", 60", 96"

DUCT/FITTINGS

DUCT ACCESSORIES

26



011
Duct Damper
Size Range:
8" x 8" - 28" x 8"

24



075
Filter Frame with Screw Holes
Size Range:
14" x 20" x 1-1/4" - 25" x 25" x 1-1/4"

18



081
Duct Hanger
Size Range:
UNIVERSAL

24 26 28



515
Standing S Cleat
Size Range:
1/2" x 1" x 18" - 1" x 1" x 120"

26 28 STD



516
S Cleat
Size Range:
8" - 120"

26 28



517
Drive Cleat
Size Range:
8" - 120"

26 28 STD



518
Joist Panning
Size Range:
16" Single - 33" Double

28



700
Double End Drive Cleat
Size Range:
6" - 48"

26 28 STD



930
Cold Air Frame
Size Range:
10" x 4" - 30" x 12"

26



Ask for Sealed

748
Square to Round Transition
Size Range:
6" x 6" x 6" - 22" x 24" x 22"

STD



931
Cold Air Frame without Tabs
Size Range:
11 3/4" x 11 3/4" - 30" x 6"

COLD AIR DUCT KIT & ACCESSORIES

PLENUMS

26

200 2-Piece Plenum with Top

Size Range:
12" x 12" x 24" - 30-1/4" x 30-1/4" x 12"



26

320 Adjustable Plenum with Top

Size Range:
16" x 16" x 36"
32" x 32" x 36"



26

400 4-Piece Knockdown Plenum with Top

Size Range:
8" x 18" x 36" - 27" x 33-1/4" x 36"



26

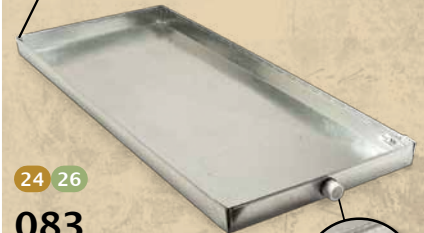
500 4-Piece Plenum with Removable Front Panel with Top

Size Range:
12-3/4" x 19-3/4" x 35" -
24" x 24" x 47"



DRAIN PAN

Folded corners provide leak proof pan and eliminates need for any type of sealant.



24 26

083 Drain Pan

Size Range:
14" x 44" - 80" x 38"



Drain plugs can be placed on either short side or long. When ordering, first measurement provided will be used to position drain plug. Available with or without drain plug.

COLD AIR DROP KITS

704

Top Load Cold Air Drop Kits

Size Range:
12" x 25" - 25" x 14"

705

Top Load Cold Air Drop Kits

Size Range:
10" x 25" - 25" x 14"

708

Top Load Cold Air Drop Kit

Size Range:
10" x 25" - 25" x 16"

709

Cold Air Drop Kit

Size Range:
20" x 10" - 20" x 16"

710

Cold Air Drop Kit

Size Range:
24" x 10" - 24" x 16"

711

Cold Air Drop Kit

Size Range:
24" x 10" - 25" x 16"

712

Cold Air Drop Kit

Size Range:
25" x 10" - 25" x 16"

713

Cold Air Drop Kit

Size Range:
24" x 8" - 24" x 16"

714

Cold Air Drop Kit

Size Range:
20" x 8" - 20" x 16"

716

Cold Air Drop Kit

Size Range:
25" x 10" - 25" x 14"

720

Cold Air Drop Kit

Size Range:
20" x 10" - 20" x 14"

721

Canvas Connector Drop Kits with Dual 1-2" Racks

Size Range:
20" x 10" - 20" x 16"

722

Canvas Connector Drop Kits with Dual 1-2" Racks

Size Range:
24" x 10" - 24" x 16"

26

Cold Air Drop Kits come with 32" Trunk Duct.



OVAL

STD **ECONO**



111

Oval Pipe

Size Range:
4" x 60" - 8" x 120"

STD

Ask for Sealed



155

Oval Flat Elbow

Size Range:
5" - 8"

STD

Ask for Sealed



156

Oval Vertical Elbow

Size Range:
5" - 8"

STD

Ask for Sealed



157

Oval Flat Angle

Size Range:
5" - 8"

STD

Ask for Sealed



158

Oval Vertical Angle

Size Range:
5" - 8"

STD

Ask for Sealed



512

Oval Start Collar

Size Range:
5" - 8"

513

Oval Start Collar without Crimp

Size Range:
5" - 8"

STD

Ask for Sealed



573

Tapered 90° Round
To Oval Boot

Size Range:
4" x 5" - 7" x 8"

STD

Ask for Sealed



574

Round To Oval 90° Boot

Size Range:
5" x 5" - 8" x 8"

STD

Ask for Sealed



576

Oval To Round 90°
Tapered Boot

Size Range:
5" x 4" - 8" x 7"

OVAL

STD

Ask for Sealed



578
Oval To Round 90° Boot
Size Range:
6" x 6" - 7" x 7"

STD

Ask for Sealed



579
Round to Oval 45° Boot
Size Range:
5" x 5" - 6" x 6" - 7" x 7" - 8" x 8"

STD

Ask for Sealed



580
Oval Adapter
Size Range:
3-1/4" x 10" x 6" - 4" x 12" x 7"

STD

Ask for Sealed



582
45° Oval Register Box
Size Range:
2-1/4" x 10" x 6" - 4" x 12" x 7"

STD

Ask for Sealed

988
Oval In Line Register 12" Throat
Size Range:
4" x 10" x 6" -
4" x 12" x 7" -
6" x 12" x 7"



968
Oval In-line Register Box 9" Throat
Size Range:
4" x 10" x 4" - 8" x 14" x 8"

STD

Ask for Sealed



485
Oval Side Ceiling Box
Size Range:
8" x 8" x 6" - 10" x 10" x 7"



STD

Ask for Sealed



583
90° Oval Register Box
Size Range:
2-1/4" x 10" x 6" - 4" x 12" x 8"

OVAL

STD

Ask for Sealed



585
Round To Oval Boot 90°
No Crimp
Size Range:
5" x 5" - 8" x 8"

STD

Ask for Sealed



586
Oval End Boot
Size Range:
5" - 8"

STD

Ask for Sealed



587
Oval Straight Boot
Size Range:
5" - 8"

STD

Ask for Sealed



588
Oval Reverse Boot
Size Range:
5" - 8"

STD



589
Oval Fire Stop
Size Range:
6" - 8"

STD

Ask for Sealed



593
90° Oval Toe Kick Boot
Size Range:
2-1/4" x 10" x 6" - 3-1/4" x 10" x 6"

STD

Ask for Sealed



969
Oval Double Stackhead
9" & 12" Throat
Size Range:
4" x 10" x 5" - 6" x 12" x 7"

26 STD



966
Oval Stackhead with
Ears 7" Throat
Size Range:
4" x 10" x 5" - 6" x 14" x 8"

967 Ask for Sealed

**Oval Stackhead
with Ears 9" Throat**

Size Range:
4" x 10" x 4" - 8" x 14" x 8"

987 Ask for Sealed

**Oval Stackhead
12" Throat**

Size Range:
4" x 10" x 6" - 6" x 12" x 8"

WALL STACK

WALL STACK

STD

Ask for Sealed



100
Shortway Angle 45°

Size Range:
2-1/4" x 10" - 3-1/4" x 14"

STD

Ask for Sealed



105
Shortway Elbow 90°

Size Range:
2-1/4" x 10" - 3-1/4" x 14"

STD



113
Stack Offset

Size Range:
2-1/4" x 10" x 16" - 2-1/4" x 12" x 16"

STD



152
Wall Stack

Size Range:
2-1/4" x 10" x 24" - 3-1/4" x 14" x 101"

STD



210
Flat Angle

Size Range:
2-1/4" x 10" - 3-1/4" x 14"

STD



215
Flat Elbow

Size Range:
2-1/4" x 10" - 3-1/4" x 14"

STD



229
End Cap

Size Range:
2-1/4" x 10" - 3-1/4" x 14"

STD

Ask for Sealed



230
Starting Collar

Size Range:
2-1/4" x 10" - 3-1/4" x 14"

STD

Ask for Sealed



572
Straight Stack Boot

Size Range:
2-1/4" x 10" x 5" - 3-1/4" x 14" x 8"

STD

Ask for Sealed



575
Elbow Stack Boot

Size Range:
2-1/4" x 10" x 5" - 3-1/4" x 14" x 8"

STD

Ask for Sealed



571
Center End Stack Boot

Size Range:
2-1/4" x 10" x 4" - 3-1/4" x 14" x 8"

WALL STACK

STD

Ask for Sealed



590
Left End Stack Boot

Size Range:
2-1/4" x 10" x 6" - 3-1/4" x 14" x 6"

STD

Ask for Sealed



591
Right End Stack Boot

Size Range:
2-1/4" x 10" x 6" - 3-1/4" x 14" x 6"

STD

Ask for Sealed



905
Stackhead

Size Range:
2-1/4" x 12" x 6"

STD

Ask for Sealed



917
Stackhead without Ears
9" Throat

Size Range:
3-1/4" x 8" x 6" - 3-1/4" x 14" x 6"

STD



925
Stackhead
3-1/2" Throat

Size Range:
3-1/4" x 10" x 6"

STD



926
Stackhead
7" Throat

Size Range:
3-1/4" x 10" x 6" - 3-1/4" x 12" x 6"

STD

Ask for Sealed



927
Stackhead with Ears
9" Throat

Size Range:
2-1/4" x 10" x 4" - 3-1/4" x 14" x 6"

STD



928
Stackhead
12" Throat

Size Range:
2-1/4" x 10" x 6" - 3-1/4" x 14" x 6"

STD

Ask for Sealed



935
Double Stackhead 1-3/8"
Flange 3-1/2" Throat

Size Range:
3-1/4" x 10" x 4" - 3-1/4" x 12" x 6"

START COLLARS & TAKE-OFF FITTINGS

COLLARS & TAKE-OFFS

26 28 STD Ask for Sealed



012
Start Collar
with Crimp
Size Range:
3" - 20"

28 STD Ask for Sealed



013
Start Collar
without Crimp
Size Range:
3" - 20"

24 28 STD Ask for Sealed



121
Side Take-Off
Size Range:
5" - 16"

26 28 STD Ask for Sealed



123
Side Take-Off
Size Range:
4" - 14"

STD



136
Adjustable Round
Take-Off
Size Range:
6-1/2" x 6-1/2" x 4" -
7" x 18" x 14"

STD Ask for Sealed



163
Double Take-Off
Size Range:
5" - 7"

132 STD Ask for Sealed

132
Side Take-Off with
0" Rise
Size Range:
4" - 10"



133 28 STD
Take-Off with 1" Rise
Size Range:
5" - 12"

134 STD
Take-Off with 2" Rise
Size Range:
4" - 8"

STD



265
Top Take-Off
with Adjustable
Collar
Size Range:
6" - 8"

STD



291
Pivot Lock Take-Off
Size Range:
6"

292 STD
Half Tab Take-Off with Crimp
Size Range:
6"



293 STD
Adjustable Take-Off with
1-3/4" Rise
Size Range:
5" - 6"

365 STD
Top Take-Off with 1-1/4" Rise
Size Range:
Only available in 4" - 7" - 8"

STD



299
EZ Turn
Take-Off
Size Range:
4" - 8"

START COLLARS & TAKE-OFF FITTINGS

28 STD

Ask for Sealed



124
Start Collar with 4" Body

Size Range:
4" - 20"
9" & Up 28ga

126 26 28 STD

Start Collar with 6" Body

Size Range:
3" - 20"

28 STD

Ask for Sealed



125
Start Collar with 4" Body & Damper

Size Range:
4" - 20"

127 26 28 STD

Start Collar with 6" Body & Damper

Size Range:
4" - 20"

26 28 STD

Ask for Sealed



129
Start Collar with 6" Body Scoop & Damper

Size Range:
4" - 20"

28 STD

Ask for Sealed



224
Twist-In Collar with Scoop & Damper

Size Range:
4" - 18"
9" & Up 28ga

223
Twist-In Collar with Scoop

Size Range:
4" - 18"
9" & Up 28ga

26

Ask for Sealed



232
Tapered Twist-In Collar with Damper

Size Range:
4" - 18"

231
Tapered Twist-In Collar

Size Range:
4" - 16"

26

Ask for Sealed



234
Tapered Twist-In Collar with Scoop & Damper

Size Range:
4" - 16"

28 STD

Ask for Sealed



146
Steel Stack Collar Triple Tabs

Size Range:
4" - 20"

26

Ask for Sealed



147
Steel Stack Collar Triple Tabs with Damper

Size Range:
4" - 20"



28 STD

Ask for Sealed

221
Twist-In Collar

Size Range:
4" - 20"
9" & Up 28ga

26 28 STD

222
Twist-In Collar with Damper

Size Range:
4" - 20"
9" & Up 28ga

COLLARS & TAKE-OFFS

TAB & TWIST-IN COLLARS

Snap Collars



28 STD Ask for Sealed

044 Ductboard Snap Collar

Size Range:
4" - 20"
9" & Up 28ga

28 STD Ask for Sealed

045 Ductboard Snap Collar Assembled

Size Range:
4" - 20"
9" & Up 28ga

28 STD Ask for Sealed

046 Ductboard Snap Collar Assembled with Damper

Size Range:
4" - 20"
9" & Up 28ga

28 STD Ask for Sealed

049 Ductboard Snap Collar with 1" Ring

Size Range:
4" - 20"
9" & Up 28ga

28 STD

344 Ductboard Snap Collar with Sealant

Size Range:
4" - 22"

345 Ductboard Snap Collar Assembled with Sealant

Size Range:
4" - 20"
9" & Up 28ga

346 Ductboard Snap Collar Assembled with Damper with Sealant

Size Range:
4" - 20"
9" & Up 28ga



348 Ductboard Snap Collar with Scoop, Damper and Sealant

Size Range:
4" - 20"

349 Ductboard Snap Collar with 1" Ring with Sealant

Size Range:
4" - 20"
9" & Up 28ga

STD



194 Telescopic Take-Off with 2" Rise with Ductboard Tabs

Size Range:
6"

193 Telescopic Take-Off with 1" Rise

Size Range:
5" - 6"

DUCTBOARD COLLARS

26 28 STD

Ask for Sealed



014
Ductboard Start Collar with Crimp & Bead

Size Range:
4" - 20"

26 28 STD

Ask for Sealed



020
Ductboard Start Collar with Damper, Crimp & Bead

Size Range:
4" - 20"

26 28 STD

Ask for Sealed



025
Ductboard Start Collar with Scoop, Damper, Crimp and Bead

Size Range:
4" - 20"

28 STD

Ask for Sealed



226
Ductboard Twist-In Collar with Damper

Size Range:
4" - 16"
9" & Up 28ga

28 STD

Ask for Sealed



228
Ductboard Twist-In Collar with Scoop & Damper

Size Range:
4" - 16"
9" & Up 28ga

STD

Ask for Sealed



298
EZ Turn Ductboard Take-Off

Size Range:
4" - 8"

225
Ductboard Twist-In Collar

Size Range:
4" - 16"
9" & Up 28ga

227
Ductboard Twist-In Collar with Scoop

Size Range:
4" - 16"
9" & Up 28ga

133DB 28 STD Ask for Sealed

Ductboard Take-Off with 1" Rise

Size Range:
5" - 12"

136DB 28 STD

Adjustable Round Take-Off with Ductboard Tabs

Size Range:
6-1/2" x 6-1/2" x 4" - 7" x 18" x 14"



FLOWTITES



212 28 STD
Flowtite with Wide Flange
with Damper

Size Range:
4" x 20"

211 28
Flowtite with Wide Flange

Size Range:
4" - 20"



130
Take-Off with Gasket

Size Range:
4" - 14"
9" & Up 28ga

131
Take-Off with Gasket
and Damper

Size Range:
4" - 12"
9" & Up 28ga



137
Plenum Take-Off
with Gasket

Size Range:
6-1/2" x 6-1/2" x 6" - 7" x 14" x 10"



297
Elbow
Flowtite

Size Range:
6", 8", 10" and 12"



218 26 28
Flowtite with
Damper

Size Range:
4" - 20"

217 26 28
Flowtite Plain

Size Range:
4" - 20"

220 28
Flowtite with Scoop & Damper

Size Range:
4" - 20"

219 28
Flowtite with Scoop

Size Range:
4" - 20"



236 26
Conical
Flowtite
with Damper

Size Range:
6" x 4" - 18" x 16"

235 26
Conical Flowtite Plain

Size Range:
8" x 6" - 18" x 16"

8236 26 Ask for Sealed
Conical Flowtite
with Damper

Size Range:
4" - 18"

8235 24 26 Ask for Sealed
Conical Flowtite

Size Range:
4" - 18"



8604 24
Saddle Tee with Gasket & Damper

Size Range:
4" on 6" - 9" - 18" on 20" - 22"

8603 24
Saddle Tee with Gasket

Size Range:
5" on 12" - 20" - 18" on 20" - 22"

604 26 28 STD
Saddle Tee with Gasket & Damper

Size Range:
4" on 6" - 9" - 16" on 18"-20"

603 28 STD
Saddle Tee with Gasket

Size Range:
4" on 6" - 9" & 16" on 22"-26"

COMMERCIAL

SPIRAL – PVC SPIRAL

Spiral product is offered in galvanized and PVC white coat. **GALV** **PVC WHITE**

22 24 26

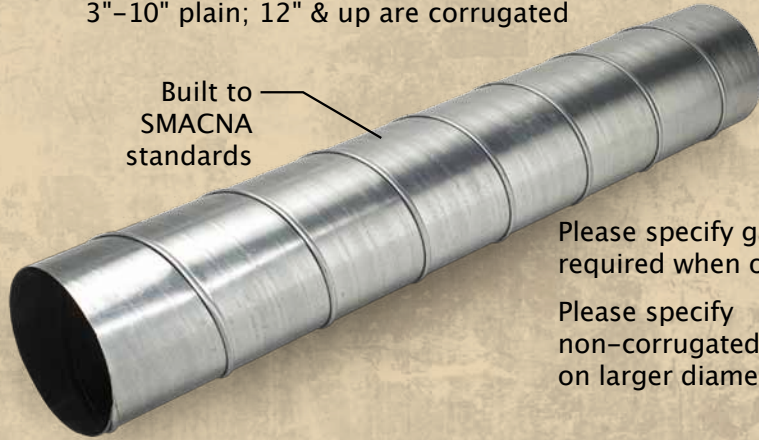
8101 **GALV**

Spiral Pipe

Size Range:
3" – 10" Plain
12" – 32" Corrugated

10' lengths standard; 5' & 8' available upon request
3"–10" plain; 12" & up are corrugated

Built to
SMACNA
standards



Please specify gauge
required when ordering

Please specify
non-corrugated if desired
on larger diameters

9101 **PVC WHITE**

PVC Spiral Pipe

Size Range:
3" – 10" Plain
12" – 32" Corrugated

20

082 **GALV**

Pipe EZ Hanger

Size Range:
4" – 24"



26

8932 **GALV**

Perimeter Saddle

Size Range:
4" x 10" – 6" Round –
8" x 14" – 18" Round



8012 24 26 **GALV**

Start Collar Spiral with Crimp

Size Range:
16" x 24"

9012 22 24 26 **PVC WHITE**

PVC Start Collar with Crimp

Size Range:
4" – 20"



24 26

8601 **GALV**

Perimeter Saddle Tee

Size Range:
6" on 6" –
20" x 24"

9601 **PVC WHITE**

PVC Perimeter Saddle Tee

Size Range:
4" on 10" – 8"
on 18" – 20"



24 26

8424 **GALV**

Spiral Tee No Crimp

Size Range:
4" – 24"

9424 **PVC WHITE**

PVC Spiral Tee No Crimp

Size Range:
4" – 24"



24 26

8150 **GALV**

Spiral Elbow

Size Range:
4" – 24"

9150 **PVC WHITE**

PVC Spiral Elbow

Size Range:
4" – 24"



24 26

8151 **GALV**

Spiral Angle

Size Range:
4" – 36"

9151 **PVC WHITE**

PVC Spiral Angle

Size Range:
4" – 36"



24 26

8222

Spin In Collar with Damper

Size Range:
4" – 20"

8221

Spin In Collar

Size Range:
4" – 20"



SPIRAL – PVC SPIRAL

24 26

8431 GALV Ask for Sealed

Tapered Reducer without Crimp

Size Range:
6" x 4" – 32" x 26"

9431 PVC WHITE

PVC Tapered Reducer without Crimp

Size Range:
6" x 4" – 26" x 22"



24 26

8021 GALV

Spiral Cap

Size Range:
4" – 24"

9021 PVC WHITE

PVC Cap

Size Range:
4" – 24"



24 26

8993 GALV

Spiral Connector

Size Range:
3" – 32"

9993 PVC WHITE

PVC Spiral Connector

Size Range:
3" – 28"



24 26

8605 GALV

Spiral Shoe Tap

Size Range:
5" on 5" – 7" –
16" on 22" – 26"

9605 PVC WHITE

PVC Spiral Shoe Tap

Size Range:
4" on 4" – 6" –
16" on 16" – 20"



26

8641 GALV Ask for Sealed

Spiral Wye

Size Range:
6" x 6" x 4" – 6" x 6" x 6"

9641 PVC WHITE

PVC Wye

Size Range:
4" x 4" x 4" – 8" x 6" x 6"



COMMERCIAL

SPIRAL – PVC SPIRAL

Spiral product is offered in galvanized and PVC white coat. **GALV** **PCD WHITE**

26



8249 **GALV**
Spiral Elbow Boot

Size Range:
2-1/4" x 10" x 6" -
6" x 14" x 8"

9249 **PVC WHITE**
PVC Elbow Boot

Size Range:
2-1/4" x 10" x 6" -
6" x 14" x 8"

22 24 26



8434 **GALV**
Spiral Eccentric Reducer

Size Range:
6" x 5" - 24" x 22"

9434 **PVC WHITE**
PVC Eccentric Reducer

Size Range:
6" x 5" - 24" x 22"

26



8772 **GALV**
Spiral Straight Boot

Size Range:
2-1/4" x 12" x 6" -
4" x 12" x 7"

9772 **PVC WHITE**
PVC Straight Boot

Size Range:
2-1/4" x 12" x 6" -
4" x 12" x 7"

9747 **PVC WHITE**
PVC Register Pan
No Flanges

Size Range: 6" x 10" x 7" -
6" x 14" x 8"

COMMERCIAL TAKE-OFFS

GALV Ask for Sealed



8240 **24 26**
Side Take-Off
with optional Damper

Size Range:
4" x 8" x 4" - 18" x 24" x 20"

8241 **24 26**
Side Take-Off

Size Range:
4" x 8" x 4" - 16" x 22" x 18"

241 **26**
Side Take-Off

Size Range:
4" x 8" x 4" - 16" x 22" x 18"

product shown with
damper/optional 2"
standoff

GALV Ask for Sealed



8244 **24 26**
Center Take-Off
with optional Damper

Size Range:
6" - 20"

8245 **24 26**
Center Take-Off

Size Range:
6" x 7" x 4" - 10" x 20" x 14"

242 **28 STD**
Side Take-Off with Damper

Size Range:
6" x 7" x 5" - 10" x 20" x 14"

product shown with
damper/optional 2"
standoff

COMMERCIAL

BOOTS with RADIATION DAMPER

EVERY Model is UL Approved!

Never worry about your building inspections again.



28 STD

259CRD
Elbow Boot 90°
with Ceiling
Radiation Damper

Size Range:
4" x 8" x 4" - 8" x 14" x 8"

Enclosed
radiation
damper is
UL approved

- The only boot with an enclosed radiation damper available that is fully UL listed for any ceiling type or truss design.
- Available from 4" x 8"-4" through 6" x 14"-10" with 6" extension and lower profiles.
- Multiple fire ratings are available upon request.
- Fuse link ratings 165°F (212° and 285° available).



28 STD

772CRD
Straight Boot
with Ceiling
Radiation Damper

Size Range:
4" x 8" x 8" - 4" x 14" x 8"

Enclosed
radiation
damper is
UL approved

28 STD

747CRD
Straight Boot
with Ceiling
Radiation Damper

Size Range:
6" x 10" x 5" - 6" x 14" x 9"

COMMERCIAL SEALED FITTINGS

24 26

051
Pour Sleeve

Sizes:
4" - 18" diameter
Standard 8" tall



24 26 28 STD

No need to
seal fittings
in the field

All seams are
sealed



HCP Sealed Fittings
are proven to reduce
CFM leakage.

24 26

8218
Flowtite with Damper

Size Range:
4" - 20"

8217
Flowtite

Size Range:
4" - 20"



101 USP
Ultra Seal Pipe

Sizes:
3" - 24"
Lengths:
2', 3', 4' and 5'

ALUMINUM VENTING



Aluminum Snap Lock Pipe
Size Range:
 3"-8" x 24" and 4"-8" x 60"

Snap
Lock



Aluminum Wall Cap
Size Range:
 3-1/4" x 10"



Aluminum Roof Cap with Screen & Damper
Size Range:
 4" - 10"



Aluminum Adjustable Elbow
Size Range:
 3" - 8"



BROWN WHITE
Plastic Hood with Removable Screen & Tail Piece
Size Range:
 3" - LMB222
 4" - LMB224
 Offered in Brown or White



BROWN WHITE
Plastic Louver Vent with Tail Piece
Size Range:
 3" - 4"
 Offered in Brown or White



Flexible Aluminum Duct
Size Range:
 3"-8" & 10" in 96" length



Hood with Tail Piece
Size Range:
 3" & 4"



Aluminum Wall Cap with Spring Damper
Size Range:
 5", 6", 7", 8", 10" and 12"



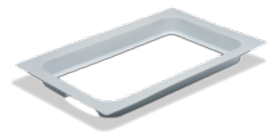
BROWN WHITE
Plastic Louver Vent
Size Range:
 3" & 4"
 Offered in Brown or White



DBX1000
White Plastic Dryer Box
Size Range:
 4" - DBX1001
 6" - DBX501



22
DBX1000M
White Metal Dryer Box Powder Coated
Size Range:
 4" - DBXMB4
 6" - DBXMB6



22
DBXMT
White Metal Ring Powder Coated
Size Range:
 UNIVERSAL

ALUMINUM VENTING

STOVE PIPE & FITTINGS

BLACK PIPE

24



101B
Black Pipe
Size Range:
6"-9"

24



10B
Black Trim Collar
Size Range:
6" - 8"

24



150B
Black Elbow
Size Range:
4" - 8"

24



15B
Black Drawband
Size Range:
6" - 8"

24



21B
Black Tee Cover with Crimp
Size Range:
6" - 8"

24



22B
Black Tee Cover without Crimp
Size Range:
6" - 8"

24



30B
Black Slip Connector
Size Range:
6" x 12", 7" x 12", 8" x 12", 6" x 18",
7" x 18", 8" x 18"

24



430B
Black Reducer with Crimp
Size Range:
7" x 6" - 8" x 6" - 8" x 7"

24



431B
Black Reducer without Crimp
Size Range:
5" x 4" - 7" x 6" - 8" x 6" - 8" x 7" -
10" x 8"

24



432B
Black In increaser with Crimp
Size Range:
5" x 6" - 6" x 7" - 6" x 8" - 7" x 8"

24



825B
Black Tee
Size Range:
6" x 6" x 6" - 7" x 7" x 7" - 8" x 8" x 8"

24



597B
Black Oval
Straight Boot
Size Range:
5" - 10"

24



031B
Adjustable Black
Flue Cover
Size Range:
6" - 9"



325 Commerce Drive, Mt. Vernon, OH 43050
Phone: 740-397-8842 Toll Free: 800-253-8236
Fax: 740-392-5352



356 West Main Street, Byesville, OH 43723



www.hc-products.com

