



WhisperGreenSelect™
VENTILATION FAN
(FV-05-11VK1 shown*)



Controller, Supply Damper & FanConnect™ Wall Switch Kit:
SACG2K-04/06/08/10
(4", 6", 8" or 10" duct options)

- Ideal for single and multi-family construction
- Provides whole house ventilation control that's integrated into the home's Central HVAC system
- Durable, powered open/close damper alleviates damper chatter
- Controls WhisperGreen Select™ (or any 110VAC ventilation fan), to provide supplemental ventilation as needed to meet ASHRAE 62.2
- Two operational modes help a home achieve the lowest cost per HERS point for either supply or balanced ventilation strategies
- Works in tandem with spot exhaust fan to achieve hybrid supply or balanced ventilation
- Features a patented setup process, including two simple options: Flow vs Time
- Digital display panel shows system status and aids in troubleshooting
- Fan/light wall switch can be programmed from the controller to provide a delay timer function**

ADDITIONAL BENEFITS

- Can be used to comply with ASHRAE 62.2, LEED for Homes, ENERGY STAR® for Homes 3.0, CALGreen, CA Title 24 and WA Ventilation Code
- Limited homeowner education/interaction needed
- System warranty – 6 years from original purchase date, when used with a WhisperGreen Select fan or fan/light

*Other WhisperGreen Select fan and fan/light models are available for use with this system

**When in Hybrid Mode

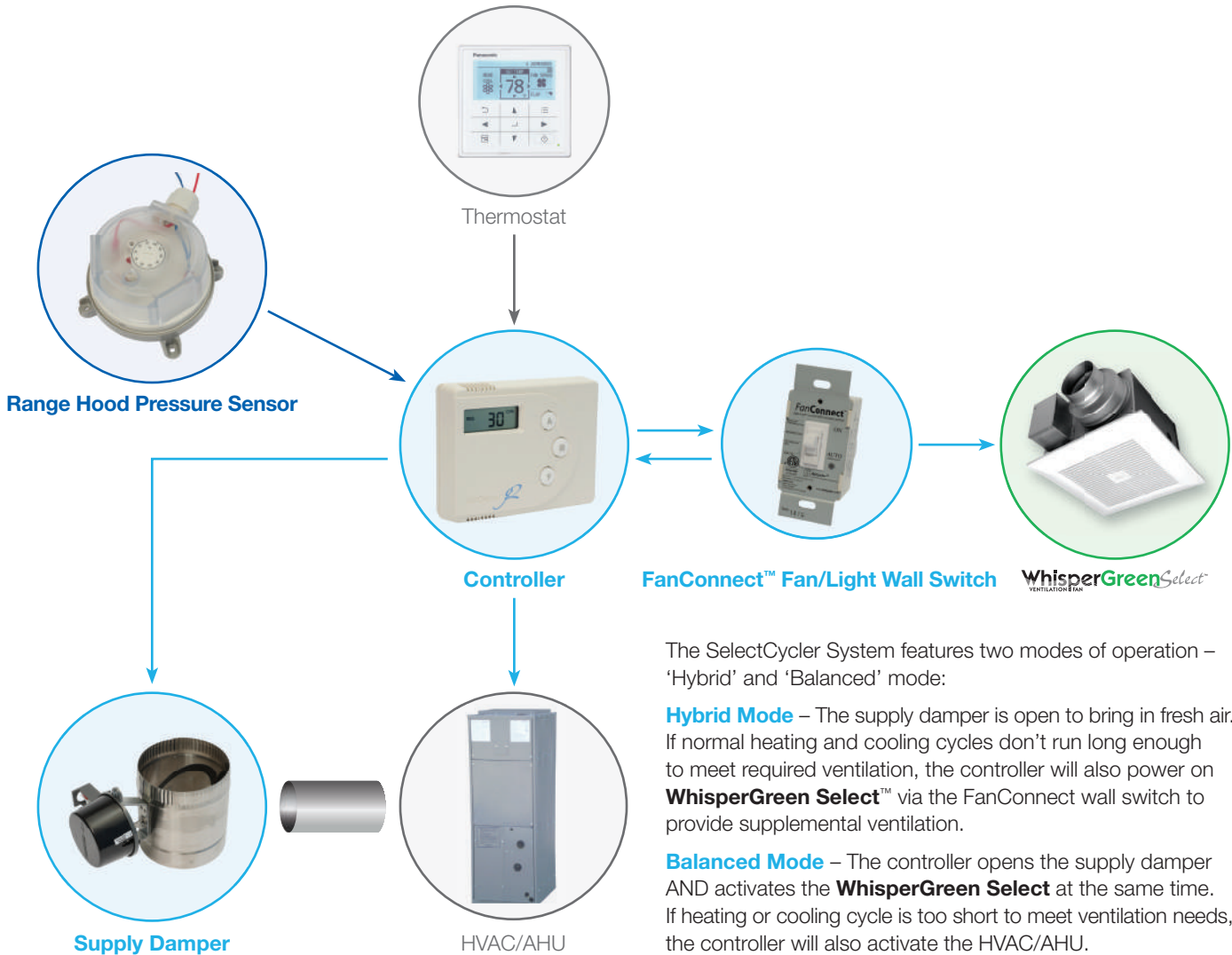


LOW COST, WHOLE HOUSE VENTILATION SOLUTION

Invisible to occupant, lowest cost per HERS point

The SelectCycler™ System is a cost effective, whole house ventilation solution for ASHRAE 62.2 compliance. By combining the best parts of both central fan integrated ventilation (typically forced air HVAC/AHU) and exhaust fan ventilation, the SelectCycler System provides the ultimate energy efficient ventilation solution.

SelectCycler System at a Glance

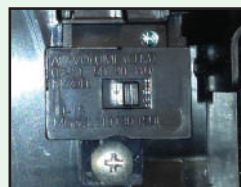


The SelectCycler System features two modes of operation – ‘Hybrid’ and ‘Balanced’ mode:

Hybrid Mode – The supply damper is open to bring in fresh air. If normal heating and cooling cycles don’t run long enough to meet required ventilation, the controller will also power on **WhisperGreen Select™** via the FanConnect wall switch to provide supplemental ventilation.

Balanced Mode – The controller opens the supply damper AND activates the **WhisperGreen Select** at the same time. If heating or cooling cycle is too short to meet ventilation needs, the controller will also activate the HVAC/AHU.

Pick-A-Flow
Speed Selector Switch



WhisperGreen Select Provides Customizable Airflow

When setting up the SelectCycler System to be balanced, the exhaust flow should match the supply damper flow. The SelectCycler System was designed exclusively to work with WhisperGreen Select fans, which incorporate Pick-A-Flow™ adjustable CFM technology for optimal use in **Balanced** mode.

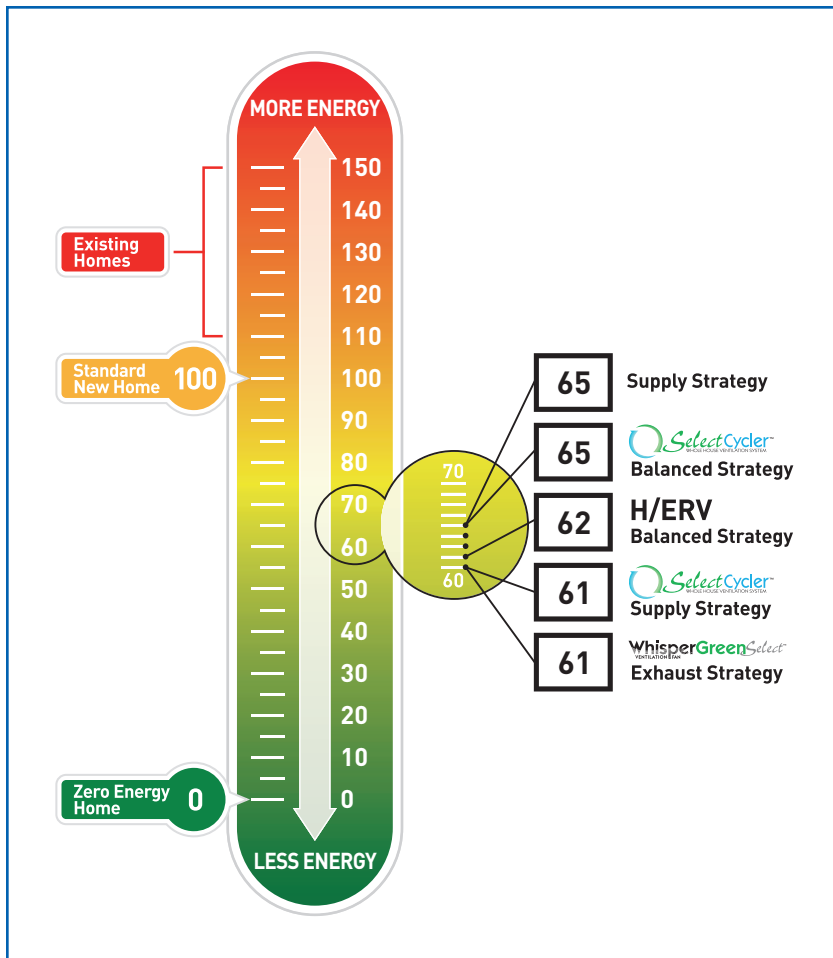
WhisperGreen Select features an ultra-quiet DC motor that incorporates intelligent SmartFlow® technology, so it automatically adjusts its speed to ensure optimal CFM output, even in the case of a complicated duct run.

HERS Index Per Ventilation Design Strategy*

Reference Home Assumptions		Climate Zone	City	Exhaust Strategy
ACH Shell Window % Volume Foundation	4 Air Change/Hour R20 Walls/R38 Attic Windows 15% of Wall 23,334 Cubic Feet Full Basement	ASHRAE Ventilation Rate: 57 CFM/24 Hours		WhisperGreen Select- FV-05-11VKS1-9.8 watts @ 110 CFM
Modeling	Conducted by EPX/NRGLogic	Zone 1	Miami	69
		Zone 2	San Antonio	56
		Zone 3	Charlotte	51
		Zone 4	New York	61
		Zone 5	Denver	66
		Zone 6	Madison	63
		Zone 7	International Falls	61
Estimated Cost per Strategy				\$150
Estimated Cost per HERS Point ¹				\$38

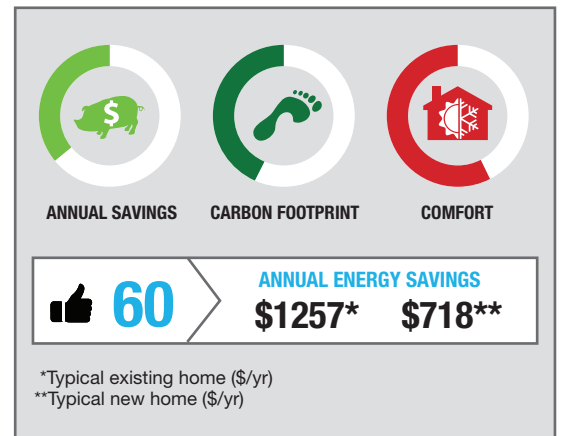
SelectCycler™ System offers the **most cost effective** solution for meeting ventilation code and minimizing the impact to your HERS Index.

HERS Index Per Ventilation Design Strategy*



HERS Index Score of 60

With proper planning and construction this home attained a good HERS score; but what if we add the 'Ventilation Penalty'?



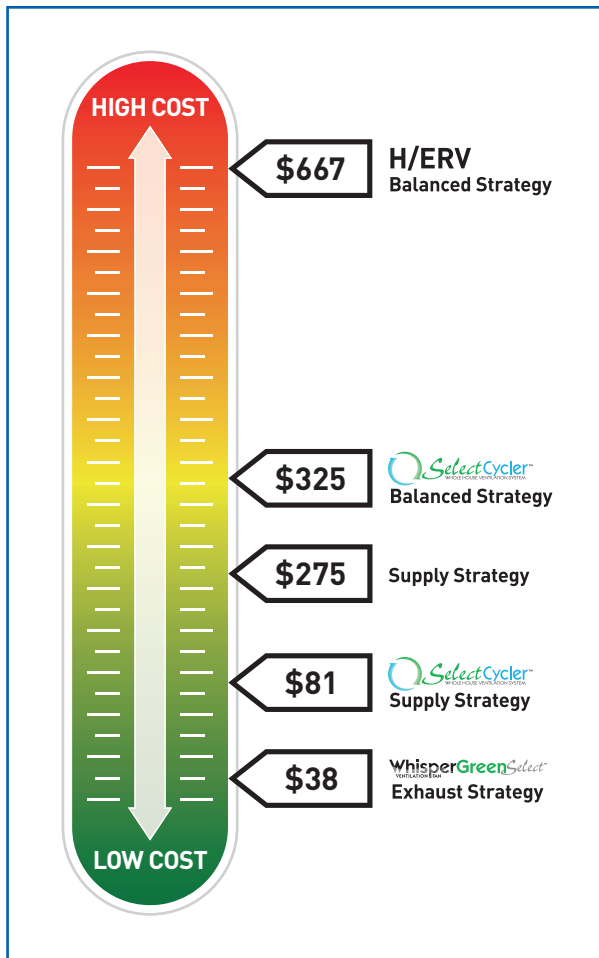
WhisperGreenSelect
VENTILATION FAN
DC Motor and low watt consumption contribute to a low HERS Index Score and Cost Per HERS Point Index

Supply Strategy	Supply Strategy	Balanced Strategy	Balanced Strategy
SelectCycler™ System in hybrid mode (exhaust fan on and supply duct open only when thermostat did not call for conditioning) ¹	Aprilaire 8126A Control System ³	Broan ERV100HC– 64% Sens/45% Total/57 CFM/52 Watts	SelectCycler System™ in balanced mode (exhaust fan on every time supply duct opens) ²
69	74	70	74
56	60	57	60
51	55	52	55
61	65	62	65
66	71	67	71
63	67	64	67
61	64	62	64
\$325	\$275	\$2,000	\$325
\$81	\$275	\$667	\$325

1. Modeled as Air Cycler with same specs as Whisper Green (Assume secondary fan is Whisper Green)
2. Modeled as Air Cycler with 350 watt draw and 75 CFM (18.4 hours per day to meet ASHRAE)
3. Modeled as Air Cycler with 350 watt draw and 75 CFM (18.4 hours per day to meet ASHRAE)
4. Estimated Cost per HERS calculated by dividing cost per ventilation strategy/[maximum ventilation strategy HERS Index (NY 65) – HERS Index per ventilation strategy (NY)]

*Modeling conducted by third-party RESNET Provider EPX/NRGLogic

Ventilation Cost Per HERS Point Index*



SelectCycler System **Balanced Mode**
 Lowest cost per HERS point for **Balanced Ventilation**

SelectCycler System **Hybrid Mode**
 Lowest cost per HERS point for **Supply Ventilation**

WhisperGreen Select™
 Lowest Cost Per HERS point for **Exhaust Ventilation**

SELECTCYCLER KIT & OPTIONAL ACCESSORIES

SelectCycler Kit (SACG2K)



Programmable Wall Mounted Controller

- Calculates supply duct and exhaust fan run cycles to meet ASHRAE 62.2
- Patented algorithm calculates operation time to meet ASHRAE 62.2 ventilation requirements
- Allows for programmable hours of operation
- Calculated flow or calculated time setup
- LCD display for system operation feedback and easy trouble shooting
- Communicates to the FanConnect wall switch to control the bathroom exhaust fan
- Operating Voltage: 24VAC (up to 30VAC max)
- Current Draw: 0.07 Amps



Motorized Supply Damper

- Stainless steel, power open/close damper
- Available in 4", 6", 8" or 10" duct size
- Operating Voltage: 24VAC (up to 30VAC max)
- Current Draw: 0.07 A idle; 0.125 A for 15 second damper transit time
- Power Draw (VA): >1W idle; 3W for 15 second damper transit time
- Wiring requirements: 19 gauge minimum
- Includes pigtail and damper for wiring
- Damper can be installed in any position



FanConnect™ Bathroom Fan/Light Wall Switch

- Compatible with single, or multi-speed fans, set to a single speed setting
- Light: 450 Watts @ 120VAC (blue wire)
- Fan: 150 Watts @ 120VAC (red wire)
- Operation: 120VAC +/- 10%

Optional Accessories

- The range hood pressure sensor works exclusively with the SelectCycler System to solve depressurization issues by allowing make up air to enter as soon as the range hood is turned on
- Hot and cold temperature sensors disable the fresh air damper in extreme temperatures



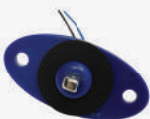
Range Hood Pressure Sensor (SACRR)

- Solves depressurization issues
- Max Operating Pressure -10kPa
- Pressure Range: 20 - 200 Pa +/-15%
- Operating Temperature: -40°C to 85°C
- Electrical Rating: 1.5A (1.4A) / 250V
- Mounting: Diaphragm in any vertical plane



Hot Temperature Sensor (SACTG-H01)

- System control in extreme hot climates
- OFF Temperature: 95°F +/- 5°
- ON Temperature: 4°F lower
- Operation: 2A @ 24VAC

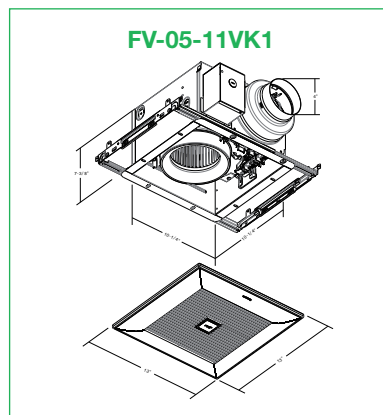
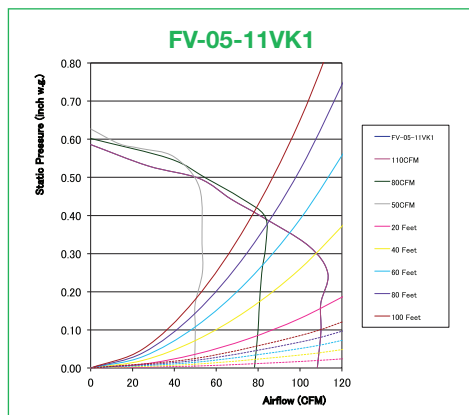


Cold Temperature Sensor (SACTG-C02)

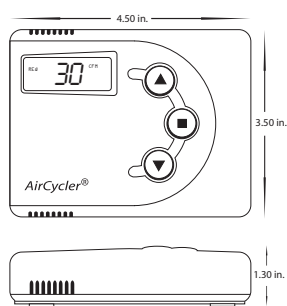
- System control in extreme cold climates
- OFF Temperature: 35°F +/- 5°
- ON Temperature: 4°F higher
- Operation: 2A @ 24VAC



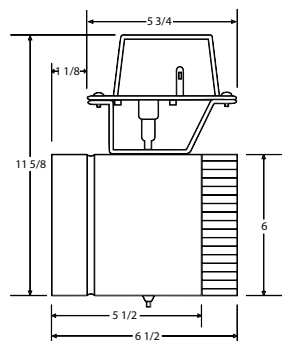
(FV-05-11VK1 shown)



PROGRAMMABLE WALL MOUNTED CONTROLLER



MOTORIZED SUPPLY DAMPER



*Light specs may change.
**Night Glo™ LED Night Light module is available.

NOTE: 0.25" w.g. = Installed Performance

WhisperGreen Select

SPECIFICATIONS		Base Fan					
		FV-05-11VK1					
Characteristics (HVI tested data for 0.1" S.P.)	Static Pressure in inches w.g.	0.1	0.25	0.1	0.25	0.1	0.25
	Air Volume (CFM)	110	113	80	82	50	53
	Noise (sones)	<0.3	0.8	<0.3	0.4	<0.3	0.3
	Power Consumption (watts)	9.8	16.1	5.5	10.2	3.5	7.0
	Energy Efficiency (CFM/Watt)	11.5	7.2	15.3	8.4	15.1	8.1
	Speed (RPM)	931	1205	814	1131	747	1072
	Current (amps)	0.10	0.16	0.06	0.10	0.04	0.07
	MAX. Current (amps)	0.27					
	Power Rating (V/Hz)	120/60					
	Specifications	Motor Type	DC				
Type of Motor Bearing		Ball					
Thermal Fuse Protection		Yes					
Blower Wheel Type		Sirocco					
ENERGY STAR Qualified		Yes					
Installation	Duct Diameter (Inches)	4 & 6					
	Mounting Opening (Inches sq.)	10-1/2					
	Grille Size (Inches sq.)	13					
Light Specifications	Lamp Watts	N/A					
	Lumens (lm)	N/A					
	Lumens Per Watt (LPW)	N/A					
	Color Rendering Index	N/A					
	Color Temperature (Kelvin)	N/A					
	Rated Life (hours)	N/A					
	Lamp Model #	N/A					
	Type of Lamp Socket	N/A					
Night Light Specs	Night Light Watts	N/A*					
Shipping	Gross Weight (lbs)	11.90					
Approved Code/Standard/Regulation	UL tub/Shower Enclosure	Yes					
	Washington VIAQ Code	Yes					
	California Title 24 Compliant	Yes					
	Mfg in ISO 9001 Certified Facility	Yes					



Scan code to view SelectCycler animation

Panasonic Eco Solutions of North America
Eco Products Division
Two Riverfront Plaza
Newark, NJ 07102
us.panasonic.com/ventfans

For Order Information
PHONE: 866-292-7299
FAX: 888-553-0723
ventfans@us.panasonic.com