

### CONDENSED CATALOG AND LIST PRICE INDEX #112

## MODEL ZD - Zone Damper

The ZD Dampers are sturdy extruded aluminum frame, parallel blade dampers with 3" blades for long life and silent operation. Each blade pivots on a self-lubricating bushing for smooth quiet operation and long life. The ZD comes in two styles, Side Mount where the motor and end plate are on the shorter dimension and the Bottom Mount where the motor and end plate are on the longer dimension. The ZD damper is available with different power actuators. All dampers can be adjusted to a minimum position.

Motor	Side Mount	Bottom Mount	Features
24VAC Spring Return	ZDSwwhh	ZDBhww	Normally Open Spring Return with Minimum Position. Can be converted to Normally Closed.
24VAC Power Open-Close	ZDSMwwhh	ZDBMhww	Built-In LED Position Indicators, Adjustable Minimum Position Stops
12VDC Plug-In	ZDSPwwhh	ZDBPhww	Plug-In Motor, dual jacks, LED position indicator, adjustable minimum position and includes 25' modular cord.

**NOTE:** On higher pressure/velocity systems over 0.5"S.P. use only power open-close or plug-in dampers.



24VAC - 3 Wire Power Open-Closed and for Modulating By-Pass

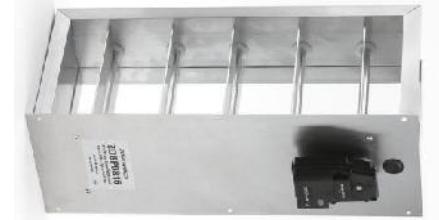
Model ZDSM



Model ZDBM



Model ZDSP



Model ZDBP

Plug-In Dampers used with Plug-In Zoning Panels Only. WIRING INCLUDED

24VAC - 2 Wire Spring Return Dampers



Model ZDS - Side Mount



Model ZDB - Bottom Mount

	8	10	12	14	HEIGHT	16	18	20	22	24
8	288.00									
10	290.00	305.00								
12	296.00	309.00	326.00							
14	308.00	318.00	338.00	346.00						
16	315.00	327.00	341.00	350.00	364.00					
18	319.00	335.00	346.00	358.00	372.00	376.00				
20	328.00	341.00	356.00	364.00	381.00	392.00	410.00			
22	334.00	358.00	368.00	379.00	393.00	418.00	429.00	473.00		
24	343.00	364.00	379.00	393.00	411.00	428.00	448.00	481.00	510.00	
26	354.00	370.00	393.00	412.00	418.00	450.00	475.00	500.00	518.00	
28	360.00	383.00	404.00	427.00	440.00	465.00	479.00	506.00	525.00	
30	379.00	389.00	420.00	440.00	450.00	494.00	507.00	531.00	544.00	
32	385.00	423.00	432.00	452.00	462.00	507.00	520.00	551.00	574.00	
34	403.00	430.00	442.00	459.00	477.00	520.00	532.00	561.00	589.00	
36	408.00	440.00	452.00	465.00	497.00	531.00	547.00	578.00	596.00	

Odd sizes available on special order. Add \$50.00 to the list price.

## MODEL RD - Round Damper

The Round Damper series is a single blade damper in a round spiral duct. This damper is complete with motor and can be ordered as a 24VAC spring return (2 Wire), Model RDS, or power open-power closed (3 Wire) Model RDM or with the 12VDC Plug-In Motor, Model RDP. The RDP is used only with the plug-in zoning panels. These model numbers are followed by the size diameter in inches as shown below. These actuators are the same as on the ZD dampers above. The RDP must be used with the NEW Plug-In Zone Panels on page 2. The RDM is more often used for by-pass control. The RDS is a spring return damper used for zoning and is shipped normally open however can be easily converted to normally closed. For high pressure/velocity systems over 0.5"S.P. use the RDP or RDM dampers.

ALL RD DAMPERS ARE THE SAME LIST PRICE



Plug-In Damper 25' Wiring Included

RDP

Model Size

- RDP 04
- RDP 05
- RDP 06
- RDP 07
- RDP 08
- RDP 09
- RDP 10
- RDP 12
- RDP 14
- RDP 16
- RDP 18
- RDP 20



24V Power Open-Closed and Modulating By-Pass

RDM

Model Size

- RDM 04
- RDM 05
- RDM 06
- RDM 07
- RDM 08
- RDM 09
- RDM 10
- RDM 12
- RDM 14
- RDM 16
- RDM 18
- RDM 20



24VAC Spring Return

RDS

Model Size

- | Model Size | List Price |
|------------|------------|
| RDS 04     | 200.00     |
| RDS 05     | 202.00     |
| RDS 06     | 206.00     |
| RDS 07     | 210.00     |
| RDS 08     | 216.00     |
| RDS 09     | 219.00     |
| RDS 10     | 229.00     |
| RDS 12     | 238.00     |
| RDS 14     | 248.00     |
| RDS 16     | 260.00     |
| RDS 18     | 287.00     |
| RDS 20     | 324.00     |

## MODEL RT Round Take-Off Dampers

The Round Take-Off Damper is a combination adhesive take-off collar and motorized damper. The RT has three models for each different motor. The RTP is our exclusive plug-in damper motor which includes 25' of modular cord and is used with only the plug-in zoning panels. The RTM is the 24V. power open-closed, three wire motor, also used as a motorized by-pass. The RTS is the 24V spring return motor. All dampers operate as the RD dampers above except are in a take-off collar. The adhesive seal provides an air tight seal to the duct to eliminate leakage.



Plug-In Damper 25' Wiring Included

Model Size

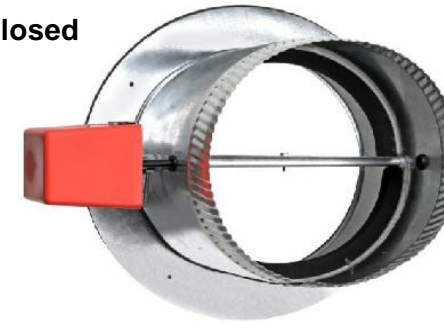
- RTP 06
- RTP 08
- RTP 10
- RTP 12
- RTP 14



24V - 3 Wire Power Open-Closed and Modulating By-Pass

Model Size

- RTM 06
- RTM 08
- RTM 10
- RTM 12
- RTM 14



24VAC - 2 Wire Spring Return

Model Size

- | Model Size | List Price |
|------------|------------|
| RTS 06     | \$216.00   |
| RTS 08     | \$226.00   |
| RTS 10     | \$240.00   |
| RTS 12     | \$254.00   |
| RTS 14     | \$260.00   |

## Model RR Retro-Round™ Insertable Dampers

The Retro-Round Insertable Dampers make it easy to install dampers into any rigid metal duct work. Just slit a 1" wide opening in the center of the round duct, slide in the RRP and secure with the screws provided. The Retro-Round is available with two different motors. The RRP uses a DC motor and wires using modular plug-in cords. The RRM is a 24VAC version using standard thermostat wire. Both motors have position indicating LEDs.

### Model RRP - RetroRound Plug-In Damper

The RRP uses a low current DC motor and wires using a 25' modular cord included with each damper as well as an additional port to connect additional RRP dampers to the same zone. The RRP must be controlled by the MMP2/3, H32P, MDP3 and MZP4 Panels. Up to 10 dampers can be used per zone.



Plug-In Model

- | Plug-In Model | 24V PO/PC Model | List Price |
|---------------|-----------------|------------|
| RRP04         | RRM04           | \$142.00   |
| RRP05         | RRM05           | \$146.00   |
| RRP06         | RRM06           | \$150.00   |
| RRP07         | RRM07           | \$154.00   |
| RRP08         | RRM08           | \$160.00   |

### Model PIW25 and PIW50

Additional 25' or 50' length of modular cord with connectors and coupler for longer damper runs using any Plug-In Damper Motor.

- | LIST PRICE | PIW25   | PIW50   |
|------------|---------|---------|
|            | \$13.00 | \$24.00 |



### Model RRM - Retro-Round Motorized Damper

The RRM uses the 24VAC low current damper motor, the same motor used on the ZDM and RDM Dampers, and can be controlled by any zoning panel that would power 24V dampers. Up to 5 dampers can be powered using a 40VA transformer. When additional dampers are needed use a larger VA transformer or use the 4PDR to isolate transformers.



# ZONE CONTROL PANELS with Colored Push-In Wiring Terminals

## Model MMZ/MMP

## MASTERZONE™ 2 and 3 Zone Single Stage Panel



The Mini-MasterZone 2 and 3 Zone panels are an economical 2 and 3 zone only panel for single stage heating and cooling systems. Compatible with any 4/5 wire (Y-G-R-C-W) thermostats, these panels are the simplest zoning system yet and includes optional Fan ON In Heat (only on 3 Zone panel), needed with Hydro-Air and electric Heating systems. Built-in LEDs indicate system status and indicators to show each zone's call. All panels feature NEW color coded screw-less terminal blocks making wiring quick and simple. The MMZ3 controls any 24VAC 2 or 3 wire zone damper and the MMP2 and MMP3 controls only the New Plug-In Dampers.

When any zone calls for heating (or cooling), the panel accepts the first call, opens the damper to the calling zone, closes the dampers to the satisfied zones and activates the HVAC Unit. Any calls for the same mode, heating or cooling, will have their zone damper open and receive conditioned air. If an opposite call is made during this time, it will be held until the first mode calling is either satisfied or a maximum of 20 minutes expires, which then after an approximate 2 minute purge time, will switch over and satisfy the opposite call. Once all heating and cooling calls are satisfied the panel will accept fan only calls and cycle the dampers to supply air only to those zones with the Fan switch in the ON position. If there are no heat, cool or fan only calls, all dampers return to the open position. The 3 Zone Control Panels also has brownout protection, a built-in Re-Boot button for system reset and a built-in circuit breaker to prevent the board and transformer from shorts.

**List Price**

For Use with 24VAC Dampers Motors

<b>MMZ3</b>	<b>\$240.00</b>	<b>Panel Only for use with 24VAC Motors</b>
<b>MMZK</b>	<b>\$290.00</b>	<b>System Kit (Includes ZPS and T24 Transformer)</b>

For use with Plug-In DC Damper Motors Only

<b>MMP2</b>	<b>\$204.00</b>	<b>NEW 2 Zone Only Panel</b>
<b>MMP2K</b>	<b>\$254.00</b>	<b>NEW 2 Zone Kit (Includes ZPS and T24 Transformer)</b>
<b>MMP3</b>	<b>\$268.00</b>	<b>Panel Only for use with Plug-In Motors Only</b>
<b>MMPK</b>	<b>\$318.00</b>	<b>System Kit (Includes ZPS and T24 Transformer)</b>

## Model H32 and H32P

## 2 and 3 Zone Control Panel - Heat Pump, Dual Fuel and Conventional 2 Heat/2 Cool



The H32 and H32P are a universal zone control panel for single stage and two stage heating and/or cooling, heat pumps and dual/fossil fuel heat pumps. Utilizing the same optimal zoning functions as in the other zone panels the H32/H32P has a set of built-in DIP switches that can set the desired functions for the type of HVAC Equipment Outputs and zone thermostats used. These panels use optional Outdoor Air Sensor to provide changeover points for dual/fossil fuel applications and Zone Plenum Sensors to provide capacity control of the equipment.

The H32 is used with any 24VAC two or three wire damper motor. The H32P is used exclusively with the New Plug-In Dampers. Up to 10 plug-in dampers can be controlled from one zone.

For use with 24VAC Damper Motors

<b>List Price</b>	<b>H32</b>	<b>\$288.00</b>	<b>Panel Only</b>
	<b>H32K</b>	<b>\$338.00</b>	<b>System Kit</b>

For use with Plug-In DC Damper Motors Only

<b>H32P</b>	<b>\$ 332.00</b>	<b>Panel Only</b>
<b>H32PK</b>	<b>\$ 372.00</b>	<b>System Kit (Includes OAS, ZPS and T24 Transformer)</b>

## NEW Model MDP3 and MDPA Adder

## Digi-Zone™ 2 and 3 Zone Expandable Universal Zone Control Panel

### For use with Plug-In Damper Motor ONLY



The NEW Digi-Zone, Model MDP3, Control Panel will control 2 or 3 Zones on any HVAC System, up to 3 Stages of Heating and 2 Stages of Cooling. The MDP3 will also control Heat Pumps and Dual Fuel as well as many geothermal heat pumps. The digital display is a menu driven screen that guides the installer through the settings for each type of system as well as accurately sets the timings and sensor temperature settings. The MDP3 also has innovative staging control based time or leaving air temperature. Other features include ZONE-A-LONET™ system setback and expandable to 103 Zones, the most in the industry. To add zones, use the MDPA, which is a 2 zone adder. An MDPA is required for each additional 2 zones. Example for 12 Zones order 1-MDP3 and 5-MDPA which is capable of 13 zones. A specific 8 conductor modular cord is supplied with each adder to connect from one panel to the next.

<u>Model</u>	<u>List Price</u>	<u>System Kit w/Transformer and Sensors</u>	<u>Adder Panel</u>
<b>MDP3</b>	<b>\$410.00</b>	<b>MDPK \$460.00</b>	<b>MDPA2 \$214.00</b>

## Model MZS4/MZP4

## MASTERZONE™ Zoning System- 4 Zone All-In-One Control Panel



The MasterZone Control Panel is the only panel needed to provide multiple zone control of any forced air heating and cooling system. The MZS4/MZP4 panel is compatible with any type of thermostat and controls up to 3 stages of heating and cooling as well as heat pumps. It is expandable up to ten (10) zones by adding the MZA ZONE-ADDER panels. Built-in LEDs provide continuous system operation readout and color coded screw less terminal blocks provide easy wiring. Standard single stage thermostats can be used to control two-stage and heat pump systems. Built-in second stage time or the number of zones calling brings on the second stage and the ZPS sensor provides capacity protection control for the HVAC Unit. The MZ panels have a built-in self resetting fuse to protect the transformer. Other features are zone indicator lights, adjustable heating high limit temperature for ZPS sensor, override button for time delay and a re-boot button for quick re-start.

The MZ panels operate the HVAC Unit based on a first call from any zone. Once a zone is calling for a particular mode, the MZ panels will not allow an opposite call for a maximum period of 20 minutes or possibly less based upon the time the unit was running in that mode when the opposite call was made. This "Intelligent Changeover Feature" is a unique feature of the MZ panels.

For use with 24VAC Damper Motors

<u>Model</u>	<u>LIST PRICE</u>	
<b>MZS4</b>	<b>\$545.00</b>	<b>Panel Only</b>
<b>MZSK</b>	<b>\$595.00</b>	<b>System Kit (Includes ZPS and T24 Transformer)</b>
<b>MZA2</b>	<b>\$229.00</b>	<b>Two-Zone Adder(use with MZS4 Only MAX 3 Adders for 10 Zones)</b>

For use with Plug-In DC Damper Motors Only

<u>Model</u>	<u>LIST PRICE</u>	
<b>MZP4</b>	<b>\$578.00</b>	<b>Panel Only for use with Plug-In Motors Only</b>
<b>MZPK</b>	<b>\$628.00</b>	<b>System Kit (Includes ZPS and T24 Transformer)</b>

No Adder for MZP4. For systems over 4 Zones use MDP3 and MDPA.

## Model OAS and ZPS

## Outdoor and Plenum Air Sensors

The Zone Plenum Leaving Air Sensor is a duct mounted sensor for the supply air. The ZPS can be used with any MasterZone panel. It can be ordered separately with each panel or it is included with each system kit. The ZPS senses the supply air temperature in the plenum to protect the heat exchanger and cooling coil from extreme plenum temperatures due to a by-pass or low air flow conditions. The Outdoor Air Sensor, Model OAS, is used exclusively with the H32, H32P and MDP3 Zone Panels to sense outdoor air temperature when controlling dual/fossil fuel heat pumps.



<b>Model</b>	<b>LIST PRICE</b>
<b>OAS</b>	<b>\$41.00</b>

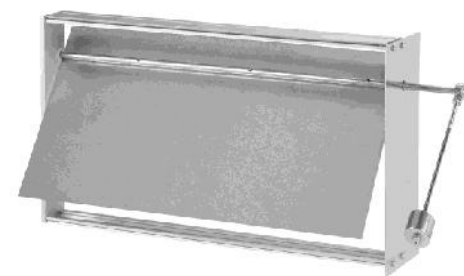
<b>Model</b>	<b>LIST PRICE</b>
<b>ZPS</b>	<b>\$43.00</b>

# By-Pass Dampers and Controls

## MODEL SPRD - Static Pressure Regulating Damper

The Static Pressure Regulating Damper, Model SPRD, is a single blade, counter balanced weighted damper, that operates on air pressure in order to control the flow of by-pass air on a zoned system. SPRD dampers are available in both rectangular/square and round sizes. The SPRD has an adjustable arm and weight to maintain the correct amount of pressure in the duct system. The SPRDs can be mounted in both horizontal and the vertical position for either up flow or down flow systems. The SPRD can also be used as a back draft damper to relieve excess air pressure in any duct system.

**NEW RTB** - Round Take-Off By-Pass is a combination take-off collar and adhesive seal and by-pass damper in one unit. All RTB dampers are 8" in length.



Rectangular/Square	List Price
SPRD1208 12"x8"	\$ 116.00
SPRD1210 12"x10"	\$ 125.00
SPRD1212 12"x12"	\$ 129.00
SPRD2008 20"x8"	\$ 130.00
SPRD2010 20"x10"	\$ 133.00
SPRD2012 20"x12"	\$ 137.00



Round Sizes	List Price
SPRD 08	\$ 119.00
SPRD 09	\$ 122.00
SPRD 10	\$ 125.00
SPRD 12	\$ 127.00
SPRD 14	\$ 130.00
SPRD 16	\$ 144.00
SPRD 18	\$ 159.00
SPRD 20	\$ 178.00

### NEW Round Take-Off By-Pass



Model	List Price
RTB08	\$124.00
RTB10	\$130.00
RTB12	\$136.00
RTB14	\$147.00

## Motorized By-Pass Controls for use with ZDSM/ZDBM and RDM Dampers on Page 1

### Model SPS



### Static Pressure Switch

The Static Pressure Switch is an economical control for a modulating damper to control by-pass air. Preset at 0.2"WC and 0.3"WC, the SPS truly modulates the RDM/ZDM dampers to maintain the system static below 0.3"WC. Above 0.3"WC the SPS will Open the by-pass damper and below 0.2"WC will close the damper.

**LIST PRICE \$120.00**

### Model SPC



### Static Pressure Control

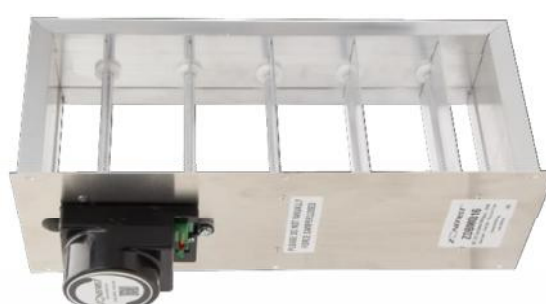
The Static Pressure Control is a higher pressure control for a modulating damper to control by-pass air. The SPC is adjustable between 0.08" W.C. to 1.2" W.C. The SPC modulates the RDM/ZDM dampers to maintain the system static.

**LIST PRICE \$300.00**

The Modulating Damper Models below can have either the SPS or SPC directly mounted to the respective damper and factory wired where only 24V. power is required to be field connected. See the respective model numbers below and add the list price of either the SPS or SPC to the list price of the respective damper model number and size.



ZDSMSwwhh -w/SPS  
ZDSMCwwhh -w/SPC



ZDBMShhww - w/SPS  
ZDBMChww - w/SPC



RDMSdd - w/SPS  
RDMCdd - w/SPC

## NEW By-Pass Eliminator

### Model BPE



The By-Pass Eliminator™, Model BPE is a digital static pressure control that eliminates a separate by-pass commonly used on zoning systems. The BPE uses the closed zone dampers to bleed them open when only one or a small number of zones are calling and the duct system static exceeds the set-point of the BPE. Just as the typical by-pass damper opens and relieves air into return, as the pressure increases, the BPE will begin to open the closed zone dampers to relieve the excess air pressure instead of a central by-pass into the return duct.

The BPE is for use only with ZONEFIRST's exclusive plug-in zone dampers which makes wiring literally a snap.

The BPE's digital display is set with both a high and a low set-point in order to maintain a proper range of static pressure in the duct. When all zone dampers are open, and provided the duct is sized properly, the duct pressure will be low. As zone dampers close as individual zones call, and therefore close off the non-calling zones the systems duct pressure will rise and there are fewer places for the air to go.

When the duct pressure rises above the High set-point of the BPE, the closed dampers will modulate open in order to relieve the excess pressure. Typically once the closed dampers open slightly the duct pressure drops below the High set-point and the dampers remain hold there until the pressure either drops below the Low setting, as others zone dampers call or they may modulate open more if more zones close down.

The BPE's digital display monitors each zone's damper position based on a percentage of opening. If for any reason dampers move past the 30% mark the installer may want to look into adding some ducts to the calling zone, in order to prevent over-conditioning the zones that were supposed to be closed.

The use of the BPE is especially useful where codes may limit and hinder the use of direct by-pass into the return. Specifically California's Title 24 Code assesses an energy penalty when homes are modeled with a direct by-pass into the return. The BPE solves this limitation issue.



The BPE can be ordered individually or as a kit with any of ZONEFIRST's Plug-In Zoning Panels. The kits have both panels mounted together and are factory wired.



**Model BPEK List Price \$300.00**

#### Combination Zone Panels with BPE

Model	List Price	Model	List Price
MMP2B	\$500.00	MMP2BK	\$550.00
MMP3B	\$564.00	MMP3BK	\$614.00
H32PB	\$628.00	H32PBK	\$678.00
MDP3B	\$706.00	MDP3BK	\$756.00
MZP4B	\$874.00	MZS4BK	\$922.00

## ZONE THERMOSTATS

### Model TDS - Single Stage Digital Thermostat



The TDS is a digital, single stage, 24V powered thermostat. This heating-cooling thermostat has only a single set point and is manual changeover with no setback. The TDS has terminal connections Y-O/B-G-R-C-W. The TDS can also control a single damper.

**LIST PRICE**      **\$124.00**

### Model TPS - Programmable Thermostat



The TPS is a battery powered, 5-1-1 or 5-2 Day, setback thermostat. The TPS is used on any zone of the new and older relay based zone control panels. The terminal connections on this thermostat are Y-O/B-G-R-W.

**LIST PRICE**      **\$148.00**

### Model TTS and TTH Touchscreen Thermostat



The TTS is for single stage systems and TTH for Heat Pumps. Both have a large LCD touchscreen for easy viewing and simple programming. The thermostat can be set-up to be 7 day programmable thermostat or not. Features such as keypad lockout and limited range control. This attractive thermostat can be hard wired or battery powered and configured for manual as well as automatic changeover. Both models can be used with older TAT Zoning Panels.

**LIST PRICE**      **Model TTS \$336.00**  
**Model TTH \$378.00**

### Model TWF Wi-Fi Smart Thermostat



The TWF is a Wi-Fi enabled thermostat allowing remote access control via your smartphone, tablet or computer. The LCD screen provides large easy to read numbers. It is easily set-up thru the app and can remotely control multiple thermostats easily with the same app. The TWF is compatible with any of the ZONEFIRST Control Panels and can be configured for conventional or heat pump operation. The TWF has terminals RC-RH-O/B-Y-G-W/E-C-L-Y2-W2.

Smartphone  
NOT Included

**LIST PRICE**      **\$328.00**

### Model WTR Wireless Thermostat and Receiver



The Wireless Thermostat and Receiver now make zoning easier to install in existing homes and buildings. The WTR package includes a wireless thermostat that can be mounted or placed virtually anywhere, eliminating the need to run wires to the thermostat. This saves hours of labor on any installation. A remote receiver is located next to or near the zone control panel and is wired to the corresponding zone on the panel. The WR, Wireless Receiver, wires to the zone thermostat terminals on the panel. Best of all the thermostat is a digital programmable thermostat providing 4 settings per day and automatic changeover.

**WTR Package**      **List Price**      **\$364.00**      **WT - Thermostat Only**      **\$182.00**  
**WR - Receiver Only**      **\$182.00**

## REPLACEMENT MOTORS and ACCESSORIES

### Model MSS 24 Volt Silent Spring Return Damper Motor



The MSS is the replacement spring return motor used for the RDS and ZD dampers. The 24 Volt motor powers the damper typically to Closed and Spring Returns it back to open for fail safe operation. The dampers can be reversed in the field using this same motor. The MSS replaces the MSR, RDM, RDMH Motors.

**LIST PRICE**      **\$154.00**

### Model MP12M Plug-In DC Damper Motor



The MP12M is the replacement motor for all Plug-In Dampers. This motor is specifically designed for use only with the dampers in this price sheet and is for replacement only. This motor has a built-in two color LED to indicate the motor's position, Green for Open, Red for Closed. The MP12M wires using a modular cord supplied with each damper. The MP12M replaces all MP12 and the M version now has adjustable minimum position.

**LIST PRICE**      **\$154.00**

### Model MDM Modulating Damper Motor



The MDM is a three (3) wire power open-power closed damper motor with built-in LEDs to indicate the damper's position. This motor is used on the ZDM and RDM dampers and is used with the SPS and SPC static pressure controls for by-pass. This motor is also used on the RRM damper.

**LIST PRICE**      **\$154.00**

### Model RCD Round Damper Counter Display



The Countertop Display is an RDS07 complete with a digital thermostat and transformer. The damper is power open and spring closed and opens whenever the thermostat calls for heating, cooling or the fan switch in ON. When the thermostat satisfies and the Fan switch is in Auto the damper will close. This display is 12"Wx14"H and 12"D.

**LIST PRICE**      **\$390.00**

### Model AFC Anti-Freeze-Up Control



The AFC prevents the air conditioning coil from freezing due to low air flow, dirty filters, low refrigerant pressure, etc. The AFC snaps onto the suction line as close to the evaporator coil as possible and breaks the compressor circuit when the suction line drops below 38° F and re-makes the circuit at 48°F. Recommended when by-passing air into the return duct.

**LIST PRICE**      **\$ 35.00**

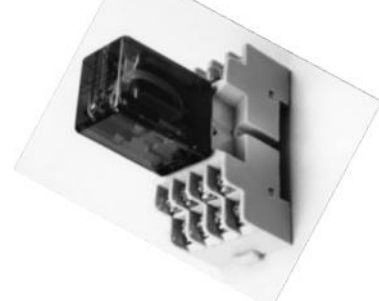
### Model T24 24 Volt Transformer



The T24 is a 24 Volt AC, 50/60Hz, 40 VA Transformer used to provide low voltage power for any 24VAC damper and/or control panel. This UL rated transformer mounts on a standard 4"x4" electrical box and is supplied by 110-120VAC.

**LIST PRICE**      **\$39.00**

### Model 4PDR 4 Pole Double Throw Relay



The 4PDR is a 24 Volt 4 Pole Double Throw Relay used for various control functions to control dampers. It also is used to slave multiple dampers and isolate power transformers.

**LIST PRICE**      **\$78.00**

### Model PIRR Plug-In Replacement Relay



The PIRR is the replacement relay for many older TAT Mark/MABS II, IV, V, VII, VIII, X, XXXI, II and MM-2/3 Zone Control and Accessory Relay panels. The 24 Volt, 4PDT relay is easily replaceable by simply un-plugging the old relay and replacing by plugging in the new one. This relay is the same as the RMABS relay.

**LIST PRICE**      **\$56.00**

# OUTLET ZONE DAMPER

## Model OZD

## Outlet Zone Damper with Wiring Included

The NEW Outlet Zone Damper, Model OZD, is an aluminum opposed blade damper that inserts into the outlet or opening of the duct into a room. The damper with self-contained motor simply inserts into the outlet opening. The depth of the damper is 2.25" and the motor is towards the center of the damper and adds another 1" of depth that easily allows the OZD to fit into most angled floor boots. The OZD is then covered with any flat floor grille, those without dampers, or registers. The OZD is powered by ZONEFIRST's exclusive Plug-In Damper Motor. Each OZD includes 100' length of plenum rated cable, Model PRC1, for wiring run thru the duct. The PRC is also available in 200' lengths, Model PRC2, with modular connectors (RJ11) already for installation. Both prices listed below.



OZD inserted in Duct Boot

<u>LIST PRICE</u>	OZD1004	\$227.00	OZD1204	\$230.00	OZD1404	\$236.00
	OZD1006	\$232.00	OZD1206	\$235.00	OZD1406	\$240.00
	PRC1	\$91.00	Included with damper		PRC2	\$184.00

## Non-Motorized • Manual • Low Leakage and Line Voltage Damper Options

ZONEFIRST offers the most complete line of square, rectangular and round dampers in the most common sizes and with a variety of options. Here are listed the numerous options available such as Non-Motorized, Manual, Low Leakage and Line Voltage in addition to the motorized models shown on Page 1 used for zoning. Dampers are ordered using their model number and dimension stated as ww (width) by hh (height) for side mount rectangular dampers, or hh(height) by ww (width) for bottom/top mount rectangular dampers. Round dampers sizes are stated as dd (diameter).

### Model CD - Control Damper

### Model MD - Manual Damper

### Model LD - Low Leakage Damper

### Model ZDL - Line Voltage Damper



Control Damper - No Motor, 1/2" x 4" Shaft  
Other shaft lengths available - call factory for special lengths



Manual Damper with Self-Locking Quadrant



Low Leakage Damper with Edge Seals - 24V Motor



Line Voltage Damper with 110/120VAC Motor

Ordering Information - specify Model and Size - ww - Width - hh- Height

			8	10	12	14	16	18	20	22	24	
<b>Control Damper</b>	Side Mount	<b>CDSwwhh</b> Deduct \$100.00 from List	8	288.00								
	Bottom Mount	<b>CDBhhww</b>	10	290.00	305.00							
			12	296.00	309.00	326.00						
			14	308.00	318.00	338.00	346.00					
<b>Manual Damper</b>	Side Mount	<b>MDSwwhh</b> Deduct \$80.00 from List	16	315.00	327.00	341.00	350.00	364.00				
	Bottom Mount	<b>MDBhhww</b>	18	319.00	335.00	346.00	358.00	372.00	376.00			
			20	328.00	341.00	356.00	364.00	381.00	392.00	410.00		
			22	334.00	358.00	368.00	379.00	393.00	418.00	429.00	473.00	
<b>Low Leakage</b>	Side Mount	<b>LDSwwhh</b> Add \$50.00 to the List	24	343.00	364.00	379.00	393.00	411.00	428.00	448.00	481.00	
	Bottom Mount	<b>LDBhhww</b>	26	354.00	370.00	393.00	412.00	418.00	450.00	475.00	500.00	
			28	360.00	383.00	404.00	427.00	440.00	465.00	479.00	506.00	
			30	379.00	389.00	420.00	440.00	450.00	494.00	507.00	531.00	
<b>Line Voltage</b>	Side Mount	<b>ZDLSwwhh</b> List Price as shown.	32	385.00	423.00	432.00	452.00	462.00	507.00	520.00	551.00	
	Bottom Mount	<b>ZDLBhhww</b>	34	403.00	430.00	442.00	459.00	477.00	520.00	532.00	561.00	
			36	408.00	440.00	452.00	465.00	497.00	531.00	547.00	578.00	

## Round Control Dampers

The Round Control Dampers are single blade round dampers with an extended 1/2" x 4" blade drive shaft. These control dampers can be controlled by adding any direct coupled actuator or damper linkage arms. The different models are simply for application for in-line duct locations, take-off collars or insertion into existing round metal ducts.

### Round Control In-Line Damper

### Round Control Take-Off Damper

### Round Control Insert Damper



Model	List Price	Model	List Price
CD04	\$60.00	CD10	\$89.00
CD05	\$62.00	CD12	\$98.00
CD06	\$66.00	CD14	\$108.00
CD07	\$70.00	CD16	\$120.00
CD08	\$76.00	CD18	\$147.00
CD09	\$79.00	CD20	\$184.00



Model	List Price
CT06	\$76.00
CT08	\$86.00
CT10	\$99.00
CT12	\$108.00
CT14	\$118.00



Model	List Price
CRR04	\$38.00
CRR05	\$42.00
CRR06	\$46.00
CRR07	\$48.00
CRR08	\$50.00

## Manual Adjustable Round Dampers

The Manual Adjustable Round Dampers are single blade round dampers with a hand adjustable self-locking quadrant. These dampers are the simple solution for controlling air volume in any duct system. These dampers can be used as "hand" dampers as referred to in ACCA Manual Zr to further control by-pass air. The different models are simply for application for in-line duct locations, take-off collars or insertion into existing round metal ducts.

### Manual Adjustable Round Damper

### Manual Adjustable Take-Off Damper

### Manual Adjustable Insert Damper



Model	List Price	Model	List Price
MD04	\$72.00	MD10	\$101.00
MD05	\$74.00	MD12	\$110.00
MD06	\$78.00	MD14	\$120.00
MD07	\$82.00	MD16	\$132.00
MD08	\$88.00	MD18	\$159.00
MD09	\$91.00	MD20	\$196.00



Model	List Price
MT06	\$88.00
MT08	\$98.00
MT10	\$111.00
MT12	\$120.00
MT14	\$130.00



Model	List Price
MRR04	\$50.00
MRR05	\$54.00
MRR06	\$58.00
MRR07	\$60.00
MRR08	\$62.00

## Line Voltage Round Dampers

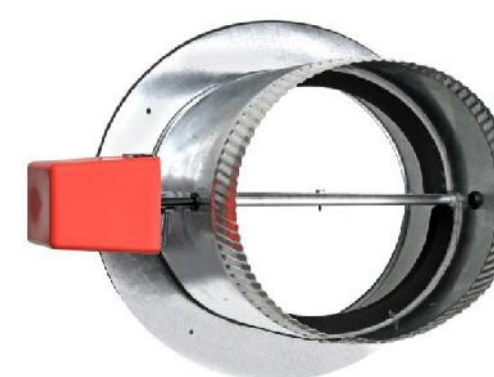
### Round In-Line Damper - Line Voltage

Model	List Price
RDL04	\$ 200.00
RDL05	\$ 202.00
RDL06	\$206.00
RDL07	\$ 210.00
RDL08	\$ 216.00
RDL09	\$ 219.00
RDL10	\$ 229.00
RDL12	\$ 238.00
RDL14	\$ 248.00
RDL16	\$ 260.00
RDL18	\$ 287.00
RDL20	\$ 324.00



### Round Take-Off Damper - Line Voltage

Model	List Price
RTL06	\$216.00
RTL08	\$226.00
RTL10	\$240.00
RTL12	\$254.00
RTL14	\$260.00



These Round Dampers have Line Voltage (110-120VAC) Spring Return Motor to actuate these dampers. The dampers are Normally Closed and Power Open and Spring Return Closed when power is removed. They can be field converted to Normally Open for a Power Closed, Spring Open operation if needed.

# NEW freshex® Ventilation Controls

## Model FAC - Fresh Air Cyclor

Meets all Ventilation Codes



The Air Cyclor controls fresh air intake and ventilation and is a low-cost alternative to the more expensive ERV/HRV. By periodically operating the HVAC System fan the Air Cyclor vastly improves the temperature, humidity and filtration system in the home or office. It provides more circulation throughout the building and eliminates stagnant air and odors by inducing fresh outdoor air. The Air Cyclor is a "smart" device as it knows when the central fan operates and activates the fan only after a selected period of time during which the fan has not operated. The Air Cyclor has a 24VAC output circuit that controls a motorized damper, Model RDSC, ducted to the outdoors, to effectively regulate fresh air ventilation when the Air Cyclor is on. The damper is cycled whenever the Air Cyclor turns the fan on.

**Model:** FAC

**List Price:** \$270.00

## Model RDSC - Round Damper, Spring Return, Normally Closed



The RDSC is a 24VAC normally closed, spring return damper that powers open on a call from the FAC and spring returns CLOSED. Any of ZONEFIRST's spring return dampers can be field converted between normally open and normally closed.

Model	List Price
RDSC04	\$200.00
RDSC05	\$202.00
RDSC06	\$206.00
RDSC07	\$210.00
RDSC08	\$216.00
RDSC09	\$219.00
RDSC10	\$229.00

**FAC and RDSC Combination Kit**  
Combine the FAC and the RDSC in a combination kit for savings. To order use Model FAC with the size of the RDSC desired.

Model	List Price
FAC04	\$440.00
FAC05	\$442.00
FAC06	\$446.00
FAC07	\$450.00
FAC08	\$456.00
FAC09	\$459.00
FAC10	\$469.00

## Ventilation Kit - Model VK



The Ventilation Kit is a combination of a 24VAC Spring Return, Normally Closed damper and pressure switch. The damper powers open when there is pressure (0.05"WC) sensed in the duct and when there is no air movement the damper spring returns closed. The VK is for ventilation control of exhaust hoods to prevent air leakage when the exhaust fan is off.

Model	List Price
VK04	240.00
VK05	240.00
VK06	244.00
VK08	246.00
VK09	248.00
VK10	250.00

## TAT Replacement Dampers and Parts

### MODEL AOBD - Automatic Opposed Blade Damper

The AOBD series of motorized dampers are constructed of lightweight anodized aluminum with a 24 volt power-open power-closed damper motor. These dampers are available as a side mount, Model AOBD; a bottom mount, Model AOBM; and an internal mount Model IOBD. These lightweight and thin profile dampers are perfect for inserting into any duct and providing maximum air flow control. The power open-power closed damper has built-in end switches to control additional dampers or other auxiliary components. The AOBD series of dampers are for systems up to a maximum of 0.5"W.C.



AOBDwwhh



AOBMhwww



IOBDwwhh

HEIGHT	HEIGHT						
	6"	8"	10"	12"	14"	16"	18"
4"	\$239.00	\$241.00	\$250.00	\$255.00	\$260.00	\$275.00	\$292.00
6"	\$243.00	\$245.00	\$251.00	\$259.00	\$266.00	\$283.00	\$301.00
8"	\$246.00	\$249.00	\$255.00	\$265.00	\$275.00	\$292.00	\$301.00
10"	\$249.00	\$251.00	\$259.00	\$265.00	\$275.00	\$283.00	\$292.00
12"	\$259.00	\$261.00	\$275.00	\$280.00	\$292.00	\$301.00	\$317.00
14"	\$269.00	\$271.00	\$294.00	\$302.00	\$325.00	\$340.00	\$348.00
16"	\$274.00	\$276.00	\$299.00	\$307.00	\$330.00	\$345.00	\$353.00
18"	\$279.00	\$282.00	\$302.00	\$310.00	\$333.00	\$348.00	\$356.00
20"	\$285.00	\$289.00	\$304.00	\$312.00	\$335.00	\$350.00	\$358.00
22"	\$295.00	\$298.00	\$306.00	\$314.00	\$337.00	\$352.00	\$360.00
24"	\$300.00	\$308.00	\$308.00	\$316.00	\$339.00	\$354.00	\$362.00
26"	\$318.00	\$324.00	\$334.00	\$342.00	\$363.00	\$379.00	\$387.00
28"	\$332.00	\$339.00	\$348.00	\$356.00	\$379.00	\$395.00	\$403.00
30"							

AOBD and IOBD available in all sizes. AOBM sizes only available in bold. All AOBD, AOBM and IOBD Dampers are special order and are not returnable.

### Model MST - Replacement Motor



The MST motor is used on all two-position AOBD style dampers as well as older model TAT registers and diffusers. It can also be used as a replacement motor for the EWC Controls Model MAN motor. The motor is 24 Volts, 6 Watts with end switches and has a 30 second opening and closing.

**List Price**

**\$200.00**

Members and Supporters of the following Industry Associations:



### FIVE (5) YEAR LIMITED WARRANTY

ZONEFIRST warrants its products to be free of defects and to provide trouble free operation for a period of Five (5) years from the date of installation. The warranty is limited to the cost of the product and does not include claims for labor or consequential damage. Prior authorization must be obtained from ZONEFIRST before returning any product. Products returned under warranty and found to be defective will be replaced or credited. Items returned within the warranty period that are found not to be defective and those items that are out of warranty are subject to a minimum repair or inspection fee. All returns must be sent freight prepaid with the return authorization number clearly marked on the packing slip. Returns without prior authorization will be refused. All items damaged in freight cannot be returned and a claim with the freight carrier must be made.

**RETURNS:** All returns must have prior authorization and are subject to a 20% re-stocking charges. Special order items may not be returned for credit. Returns are for credit only and can only be



www.zonefirst.com



6 Aspen Drive • Randolph, New Jersey 07869-1103

USA Toll Free (US and Canada) 1-877-FIRSTZONE (347-7896)

Telephone 1-201-794-8004 • FAX 1-201-794-1359

E-Mail: info@zonefirst.com

Orders: orders@zonefirst.com