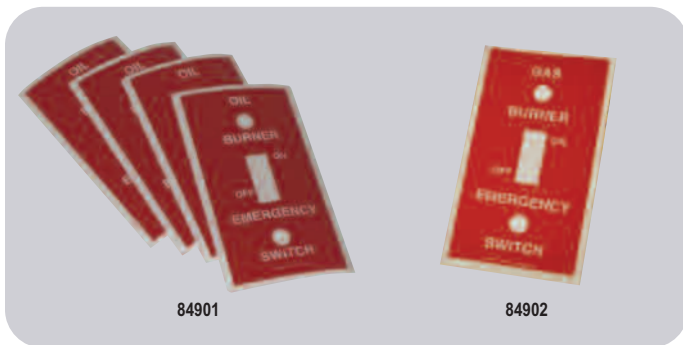


### 4" Octagon Steel Covers



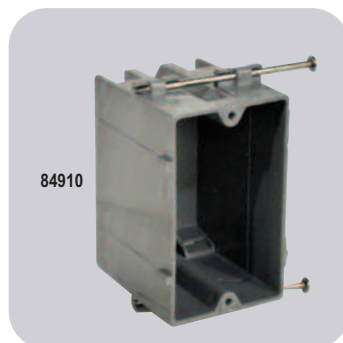
MARS NO.	DESCRIPTION	MARS PACK	CASE QTY.
84980	Flat blank	1	25

### Emergency Switch Cover Labels



MARS NO.	DESCRIPTION	MARS PACK	CASE QTY.
84901	Oil burner switch label; 4" x 2 1/8"	10	1
84902	Gas burner switch label; 4" x 2 1/8"	10	1

### PVC Switch Boxes - Angles Nails



MARS NO.	DESCRIPTION	MARS PACK
84910	18 cubic content inches, 2 3/4"D	100

### Electrical Fittings-EMT Type-Carded

• Zinc die cast construction



MARS NO.	DESCRIPTION	CASE QTY.
85115	1/2" EMT set screw connector, bulk	50
85326	3/4" EMT set screw connector, 2/cd	5
85327	1/2" EMT set screw coupling, 2/cd	10
85329	1/2" EMT compression connector, 3/cd	10
85330	3/4" EMT compression connector, 2/cd	5
85332	1/2" EMT compression coupling, 3/cd	10
85335	1/2" EMT one-hole strap, 5/cd	10
85336	3/4" EMT one-hole strap, 4/cd	10
85302	3/4" EMT one-hole strap, bulk	100
85337	1" EMT one-hole strap, 2/cd	10
85338	1 1/4" EMT one hole strap, 4/polybag	20
85306	1/2" rigid IMC strap, bulk	100
85307	3/4" rigid IMC strap, bulk	100
85308	1" rigid IMC strap, bulk	50

### Electrical Fittings-Rigid Conduit-Carded



MARS NO.	DESCRIPTION	CASE QTY.
85364	3/4" x 1/2" reducing washer, 4/cd	10
85279	1 1/4" x 3/4" reducing washer, bulk	50
85280	1 1/4" x 1" reducing washer, bulk	50
85281	1 1/2" x 1/2" reducing washer, bulk	50
85282	1 1/2" x 3/4" reducing washer, bulk	50
85284	2" x 3/4" reducing washer, bulk	25
85374	1/2" - 1" ground clamps, 1/cd	10

SERVICE & INSTALLATION