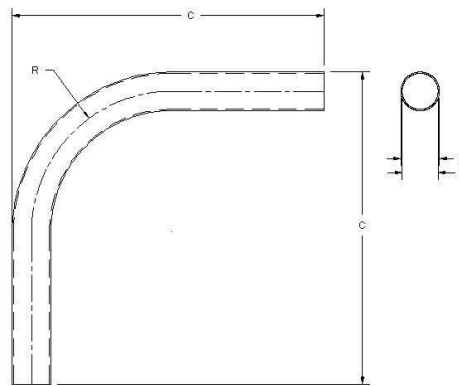


# PRODUCT SUBMITTAL 508

Product: PVC Bend Guides  
Date: 06 May 2014 (supersedes 07 March 2014)



Article No.	Description	Average OD A in (mm)	Average ID B in (mm)	Radius R in (mm)	Height C in (mm)
266170-001	3/8 and 1/2 in. PVC Bend Guide	1.10 (28)	1.02 (26)	4 (102)	8.56 (217.42)
266175-001	5/8 and 3/4 in. PVC Bend Guide	1.46 (37)	1.34 (34)	6 (152)	9.94 (252.48)
266180	1 in. Schedule 40 PVC Bend Guide*	1.90 (48.26)	1.59 (40.39)	8.5 (216)	12.5 (317.5)

\*1-1/2" Schedule 40 PVC pipe

## FUNCTIONAL DESCRIPTION

Create 90° bends without an elbow fitting by inserting RAUPEX pipe into these rigid plastic PVC bend guides. PVC bend guides provide protection at slab penetrations and create professional appearance at manifolds.

For updates to this publication, visit [na.rehau.com/resourcecenter](http://na.rehau.com/resourcecenter)  
The information contained herein is believed to be reliable, but no representations, guarantees or warranties of any kind are made as to its accuracy, suitability for particular applications or the results to be obtained therefrom. Before using, the user will determine suitability of the information for user's intended use and shall assume all risk and liability in connection therewith. To the extent permitted by law, REHAU EXPRESSLY DISCLAIMS ALL IMPLIED WARRANTIES, INCLUDING BUT NOT LIMITED TO, ANY IMPLIED WARRANTIES OF MERCHANTABILITY OR OF FITNESS FOR A PARTICULAR PURPOSE. © REHAU Incorporated 2014