

Totaline® P920-RECOVERY115 Oil-Less Refrigerant Recovery Unit



When dependability and durability is critical, choose the Totaline P920-RECOVERY115 Oil-Less Refrigerant Recovery Unit.

- With our patented 3/4hp Platinum Plus Compressor, the Totaline P920-RECOVERY115 is capable of recovering direct liquid. A larger 1-1/8" piston allows for movement of greater volumes of refrigerant. This feature saves your customer time when servicing a system.
- The larger piston also provides the Totaline Refrigerant Recovery Unit increased durability and longevity in the field.
- The simple operation consists of one-line-in, one-line-out technology. Easily self evacuate the lines to ensure air is not entering the recovery cylinder, then simply switch the valves to recover and go about your work. When recovery is done, evacuate the unit with a switch of the valve to ensure refrigerants are not cross contaminated.
- The Totaline Refrigerant Recovery Unit is designed with the technician in mind. The unit is compact with a low center of gravity. No worrying about this unit sliding around in the truck.
- With our compact design comes a lighter unit with extra ease of mobility. Weighing in at only 34 lbs. the unit can easily be carried up ladders or stairs to any jobsite.
- Totaline incorporates the latest technology in injection mold design with internal channels increasing airflow across the compressor head and motor.
- Field repairable with only one kit.
- Assembled in the U.S.A.

Ordering Information:

Part No.	Description
P920-RECOVERY115	Oil-Less Refrigerant Recovery Unit

Accessories:

KIT006	Low Pressure Cut-Out Kit for 115v and 230v models.
KIT007	Tank Full Kit for 115vt Models.

Replacement Parts:

C-032-F	3cu. Replacement Filter Drier
RGA502	Replacement Low Pressure Gauge
RGA802	Replacement High Pressure Gauge
CPK076	Compressor O-Ring Rebuild Kit
CPK077	Compressor Piston Rebuild Kit
CPK078	Compressor Head Rebuild Kit
RSC019	Shaft Seal - Compr. to Motor
CPK079	Complete Compressor Kit -

Contains all above except replacement gauges and filter drier.

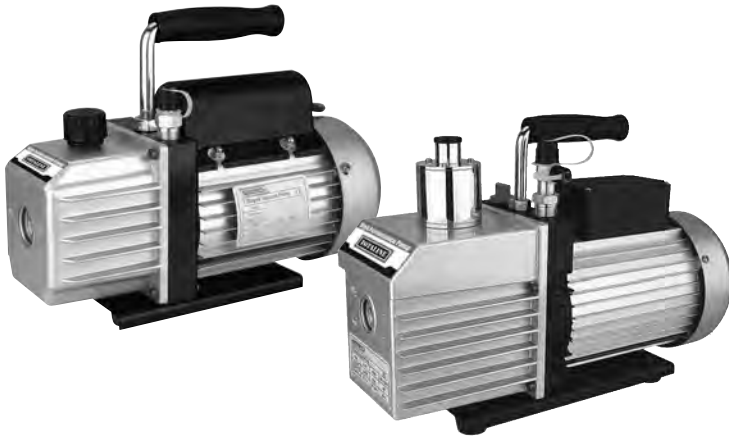
Recovery Rates - Per ARI 740 Standard

P920-RECOVERY115	R22	R410a	R134a	R407c
Push/Pull Liquid	13.60lbs/min.	13.99bs/min.	10.58bs/min.	13.75bs/min.
Direct Liquid	4.08lbs/min.	4.98lbs/min.	3.79lbs/min.	5.02lbs/min.
Direct Vapor	.35lbs/min.	.23lbs/min.	.23lbs/min.	.31lbs/min.

Power requirements:

115 Model: 115VAC, 50/60 Hz,
1-phase, MIN CKT AMP 15, MAX
Dimensions (LxWxH): 16-in x 10-in x 13-in
Weight: 34-lbs/15.4-kg (shipping 38-lbs/17.2-kg)
Safety limit switches: High pressure = 550-psi
Low pressure = 10-in Hg (opt)

Totaline® Dual Stage Vacuum Pumps 1.8 CFM - 7 CFM

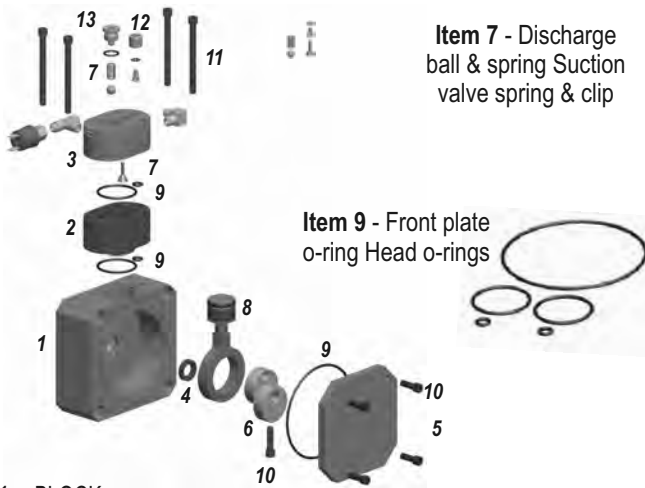


The HVAC/R professional's best friend, Totaline Vacuum Pumps are affordable, reliable, built to last and available in three sizes: 1.8 CFM, 4 CFM and 7 CFM.

- High ultimate vacuum: 3 x 10⁻¹Pa (25 microns)
- Quick flow rate
- Portable, smaller and lighter in design
- Stable equipped with thermal protector
- Reliable force feed lubrication system
- Power plug easy connection with various plugs
- One year limited warranty

PART NO	Voltage 110-220 Volt/ 50-60 Hz	Pa	Microns	Stage	Power HP	Intake Fit- ting	Oil Capacity ml	Dimensions Inch	Net Weight lbs
P920-VAC4D015	1.5 CFM@50Hz 1.8 CFM@60Hz	3X10 ⁻¹	25	2	1/4	1/4" Flare	200	12.1"x4.8"x9.0"	18.5
P920-V AC4D035	3.5 CFM@50Hz 4.0 CFM@60Hz	3X10 ⁻¹	25	2	1/3	1/4" & 3/8"Flare	350	13.2"x5.4"x9.8"	24.7
P920-VAC4D060	6 CFM@50Hz 7 CFM@160Hz	3X10 ⁻¹	25	2	3/4	1/4" & 3/8"Flare	700	15.7"x5.7"x10.6"	36.4

3/4hp Platinum Plus Compressor Assembly



Item 7 - Discharge ball & spring Suction valve spring & clip

Item 9 - Front plate o-ring Head o-rings

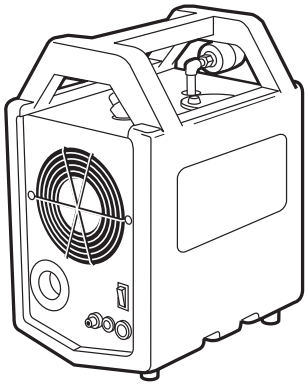
- 1 BLOCK
- 2 COMPRESSOR CYLINDER
- 3 COMPRESSOR HEAD
- 4 LIP SEAL
- 5 COVER PLATE
- 6 COMPRESSOR COUNTER WEIGHT
- 7 COMPRESSOR HEAD KIT
- 8 COMPRESSOR PISTON KIT
- 9 COMPRESSOR O-RING KIT
- 10 SCREW SOCKET HEAD CAP ¼ -20 X 1.00 LONG STEEL BLACK
- 11 SCREW SOCKET HEAD CAP ¼ -20 X 3.00 LONG STEEL BLACK
- 12 SUCTION VALVE PLUG
- 13 DISCHARGE PLUG / WITH O-RING

Ordering Information:

Replacement Parts:

- C-032-F. 3cu. Replacement Filter Drier
- RGA502 Replacement Low Pressure Gauge
- RGA802 Replacement High Pressure Gauge
- CPK076 Compressor O-Ring Rebuild Kit
- CPK077 Compressor Piston Rebuild Kit
- CPK078 Compressor Head Rebuild Kit
- RSC019 Shaft Seal - Compr. to Motor
- CPK079 Complete Compressor Kit - Contains all above except replacement gauges and filter drier.

REFRIGERANT RECOVERY



- Enjoy faster more reliable recovery — larger 3/4-hp oil free compressor easily services larger cooling systems.
- Finish sooner — 30% faster recovery rates versus our previous Totalvac design.
- Now has covers

More Durable

- Don't "baby sit" the liquid recovery process — special ball discharge valve prevents slugging and premature compressor failure.
- Enjoy longer service life — switch halts recovery when A/C system is under a 10" vacuum to prevent excess wear to compressor components.
- Worry less — top handle shields valves, ports and gauges for better protection. Rugged double-walled plastic housing absorbs shock and abrasion.

Easier to Operate

- Simplify recovery — two hand valves perform self-evacuation and recovery in fewer steps.
- Start recovery then do other things — automatically halts vapor recovery when process is complete.
- Comfortably tote the compact 30-lb unit to your jobsite by its included shoulder strap. Easy to Field Service
- Prevent downtime — compressor may be overhauled in the field with simple tools and readily available spare parts in about 30 minutes.

SPECIFICATIONS

Vapor Recovery 0.31-lb/min

Recovery Rates (R-22) Liquid Recovery 5.04-lb/min

Push/Pull 14.50-lb/min

Dimensions (L x W x H) 13.5" x 9" x 17"

Weight 30-lb 38-lb Shipping

Compressor 0.75-hp oil free

Power Supply: Unit is equipped with a flanged inlet power receptacle. Overseas models included an adapter

for different power cords. Recommended maximum length on 14 gauge power cord is 20 ft.

Included with Purchase

- Shoulder strap
- Now optional see below
- One 3-cubic inch in-line filter

Accessories

12RA680106.....30 lb. Cylinder (Puron)

12RA680105.....50 lb. Cylinder (Puron)

12RA680107.....50 lb. Cylinder with liquid switch (Puron)

Optional Float Accessory Kit

KIT002 115V for P706.0001-L

KIT003 220V for P706.0002-L

Includes:

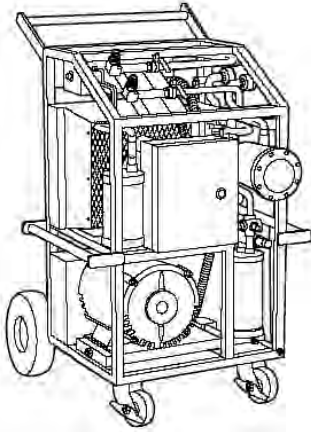
6 ft. float cable Full indicator light

Float By-pass switch Hard wiring instructions

PART NO	DESCRIPTION
P706-0001-L	with low pressure switch, 115/60/1
P706-0002-L	with low pressure switch, 220/50/1

REFRIGERANT RECOVERY

EVAC COMMERCIAL™ OPEN DRIVE HIGH PRESSURE RECOVERY SYSTEM



Shaves hours off recovery times on chillers and large A/C or refrigeration systems.

FASTER SPEED

- Recovers 325-lb/min liquid and 6-lb/min vapor (R-22).

HIGH DURABILITY

- Rugged 3-Hp open drive compressor provides years of reliable service, even on refrigerants heavily contaminated with oil, air, moisture, and acids.

SERVICES MOST HP REFRIGERANTS

- R-12, R-22, R-114, R-134a, R-404, R-407, R-500, R-502, R-507, MP39 and other high pressure refrigerants or blends (does not service very high pressure refrigerants such as R-13 and R-23).

EASY OPERATIONS

- Purging lines and switching from liquid to vapor recovery modes simply involves turning three 3-way hand valves and rerouting a hose.

SPECIFICATIONS

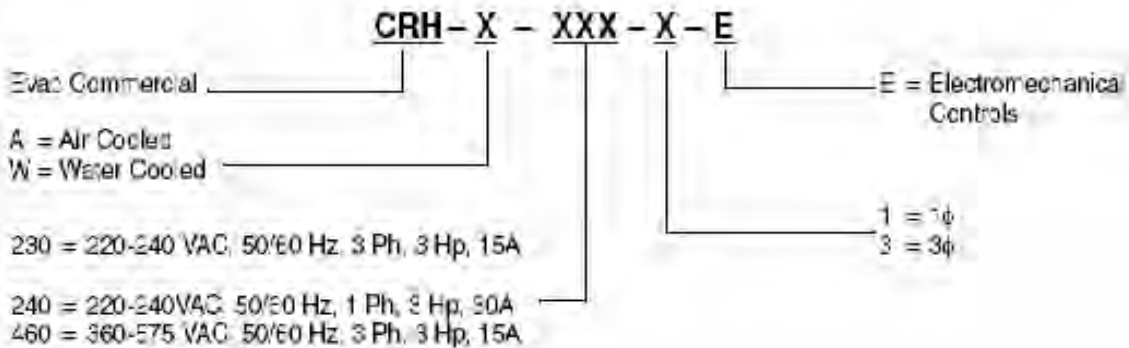
Liquid Push/Pull (R-22) 325 lb/min
 Vapor Rate (R-22) 6.0 lb/min
 Final Vacuum 15-in. Hg
 Motor 3 Hp
 Power: Controls 103-127 VAC, 50/60 Hz, 1φ, 15A
 Connections 3/4" flare
 Dimensions (L x W x H)
 Electromechanical
 32 in. x 29 in. x 45 in. (114 cm)
 Weight Electromechanical: 310 lb
 Shipping: 375lb.

Included with Purchase:

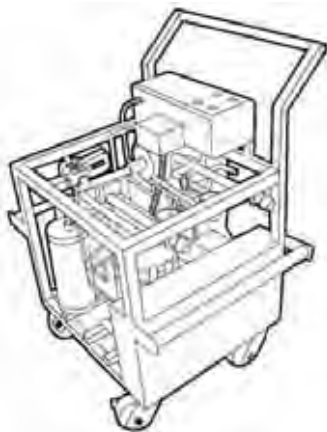
DESCRIPTION	PART NO.
3 Ph units have separate 115V Controls Power cord.	---
Two cords total.	
Two each 3/4-5/8" and 5/8-1/2" reducing fittings	---
-Two 48cu.in filter drier cores	FD-048-CR
-One 3/4" x 20 ft hose	075-020-HP-FB
-Two 3/4" x 10 ft hoses	075-010-HP-FB

Optional Accessories:

DESCRIPTION	PART NO.
Spare filter driers—48cu.in filter drier cores	FD-048-CR
Compressor fluid, 1 gal	OIL-POE-1G
100, 250 and 1,000 lb tanks	
with 3/4" ports and dip tubes	---
Custom sized ASME tanks	---



REFRIGERANT RECOVERY



SPECIFICATIONS

Recovery Rates (R-11)

Open Drive Model

Liquid = 100-lb/min

Vapor = 0.66-lb/min

Final Vacuum: 29-in Hg

Power: Recovery Unit

103-127VAC, 1 ϕ , 50/60 Hz, 1.5-hp, 10A

Weight

Open Drive Model: 160-lbs

Shipping: 210-lbs

Connections: 3/4" male flare

fittings with ball valves

Warranty 1-year Parts

Dimensions (L x W x H)

Electromechanical 23" x 27" x 34"

LOVAC outpaces other recover systems, especially when refrigerant is contaminated with moisture, oil, or noncondensibles

FASTER SPEED

- Recovers R-11 at 100-lb/min liquid and 0.66-lb/min vapor.

NONCONDENSIBLES? NOT AN ISSUE!

- LOVAC's compressor works against very high head pressures and the water cooled condenser and subcools recovered refrigerant to minimize the effects of noncondensibles.

HIGH DURABILITY

- Rugged 2.0 Hp open drive compressor stands up to difficult recovery conditions better than vacuum pumps.

REFRIGERANT COMPATIBILITY

- Serves all low pressure refrigerants. Switching between R-11, R-123, and R-113 simply involves evacuating the recovery unit, changing fluid and replacing two external filters.

EASY OPERATION

- Purging lines and switching from liquid to vapor recovery modes simply involves turning three valves and rerouting hoses.

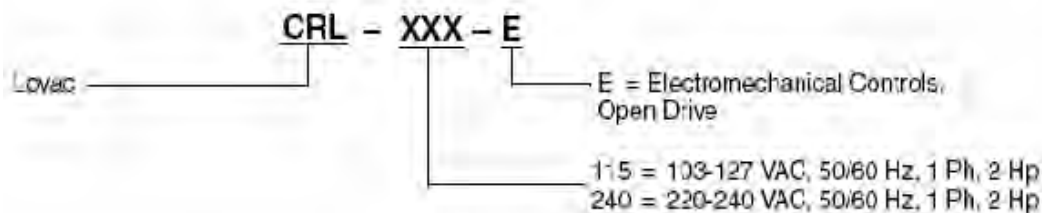
Included with Purchase:

DESCRIPTION	PART NO.
One power cord 50 ft.	---
Two each 3/4-5/8" and 5/8-1/2" reducing fittings	---
-Two 48cu.in3 filter drier cores	FD-048-CR
-One 3/4" x 20 ft hose	075-020-HP-FB
-Two 3/4" x 10 ft hoses	075-010-HP-FB

Optional Accessories:

DESCRIPTION	PART NO.
- 48-cu.in filter drier cores	FD-048-CR
Compressor fluid, 1 gal	OIL-POE-1G
440 and 880 lb recovery tanks with 3/4" ports	---
Tank float safety cables and adapters	---

PART NO. NOMENCLATURE

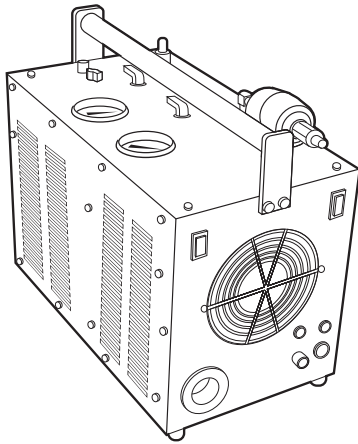


Tools & Instruments

Compressors, Chillers, Condensers
 Motors
 Electrical
 Heating Components
 Indoor Air Quality
 Thermostats
 Oils & Chemicals
 Accessories, Supplies & Commodities
 Tools & Instruments
 Refrigeration

REFRIGERANT RECOVERY

HANDIVAC™ HIGH CAPACITY OIL-LESS RECOVERY SYSTEM



SPECIFICATIONS

Push/Pull (R-22)* 25-lb/min
 Direct Liquid (R-22) 7.8-lb/min
 Vapor (R-22) 0.62-lb/min
 Weight 63-lbs (28.6 kg)
 Motor 1.5 Hp
 Connections 3/8" Flare
 Dimensions (L x W x H) 18" x 10" x 16"
 Float Connection 3-pin BH
 Low-Pressure Switch 15" Hg
 *Push/pull rates using 3/8" lines.

Extra condensing capacity and higher horsepower for faster refrigerant transfer rates and longer component life.

High ARI Certified Recovery Rates (R-22)

SPEED ENHANCING FEATURES

- Dual 0.75 hp oil-less compressors double recovery rates for servicing commercial cooling units.
- Unit self-evacuates prior to performing recovery.
- Compressor pulls directly on liquid with safeties to protect against slugging.

LESS MAINTENANCE

- Oil-free compressor lessens maintenance hassles. Easily switches between R-12, R-22, R-134a, R-500, R-502, R-409, R-410a, MP39 and other high pressure refrigerants and blends.
- Dual fans provide abundant air flow to properly cool the compressor motor & head as well as other internal components for longer service life.

SAFETY FEATURES

- High head pressure shut off at 425-psi.
- Low pressure shut off at 15-in Hg.
- Operational 80% tank full float valve shut off.

Push/Pull* direct liquid vapor

RTO-500 25-lb/min 7.8-lb/min 0.62-lb/min

* Push/pull rates using 3/8" hose.

DESCRIPTION	PART NO.
3/8" male flare x 3/8" female flare	RFD154
6-ft float cable and 3 pin (BH) connector	FVC-006

Optional Accessories:	
DESCRIPTION	PART NO.
Spare filter driers: -In-line filter 3 in3, 1/4" flare	FD-003-25
-3/8" male flare x 3/8" female flare	RFD154
5, 10 and 20 ft x 1/4" hoses	---
30, 50, 250 and 1,000 lb recover tanks	---

PART NO. NOMENCLATURE



RTO = Twin Cylinder Oil-less compressor

500 = Handivac System

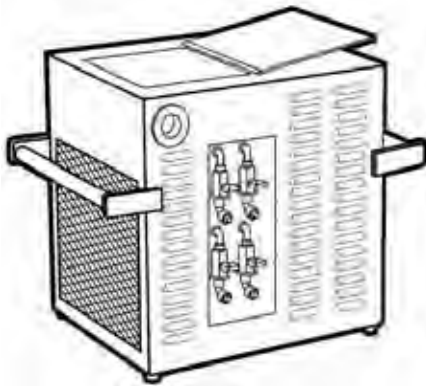
RTO - 500 - XXX - F

Float Cable Connection

115 = 115 VAC, 50 Hz, 1ϕ, 15A
 240 = 240 VAC, 50 Hz, 1ϕ, 15A

REFRIGERANT RECOVERY

MITYVAC™ LIGHTWEIGHT OPEN DRIVE RECOVERY SYSTEM



SPECIFICATIONS

Liquid Push/Pull (R-22): 55 lb/min
 Vapor Rate (R-22): 1.56 lb/min
 Final Vacuum: 15 in. Hg
 Weight: 145 lbs. (180 shipping)
 Motor: 2.0 Hp
 Connections: 1/2" Flare
 Dimensions: (L x W x H)
 18" x 14" x 19"
 (46cm x 35cm x 48cm)

Offers the additional speed and durability of an open drive compressor in a lightweight package.

ACCELERATES RECOVERY PROCEDURES TO SAVE LABOR AND REDUCE COOLING SYSTEM DOWNTIME

- 2.0-hp compressor moves refrigerant through a 1/2" port and valving system at sizzling rates of 55- lb/min liquid and 1.56-lb/min vapor (R- 22).
- High capacity air cooled condenser with 700-cfm fan maintains recovery rates at high ambient temperatures.

RUGGED DESIGN OFFERS LONGER SERVICE LIFE AND GREATER FLEXIBILITY

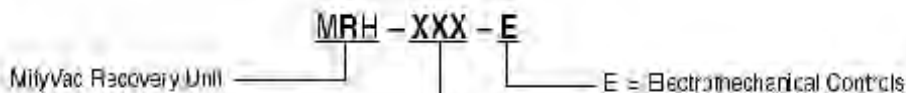
- Open drive compressor is virtually impervious to the acids and contaminants that burnout hermetic or oil-less compressors.
- Services R-12, R-22, R-500, R-502, R-134a, MP39, R-409a, R-507 and other high pressure refrigerants and blends. Can be reprogrammed to service newly introduced refrigerants.

SIMPLE OPERATING PROCEDURES

- Purging lines and switching from liquid to vapor recovery modes simply involves turning three 3-way hand valves — no switching hoses is necessary.

Included with Purchase	
(HOSES NOT INCLUDED):	
DESCRIPTION	PART NO.
50 ft. power cord	---
Two in-line 30cu.in filter driers	FD-030-50
Optional Accessories:	
DESCRIPTION	PART NO.
Recovery hoses - four required:	
1/2" x 10 ft. hoses	050-010-HP-FB
1/2" x 20 ft. hoses	050-020-HP-FB
Spare filter driers	FD-030-50
Recovery tanks (float valves optional)	
-1000-lb capacity	CYL-0250
Tank float safety cables and adapters	CYL-1000

PART NO. NOMENCLATURE



115 = 103-127 VAC, 50/60 Hz, 1 Ph, 2.0 Hp, 20A
 240 = 220-240 VAC, 50/60 Hz, 1 Ph, 2.0 Hp, 15A

Compressors,
Chillers, Condensers

Motors

Electrical

Heating
Components

Indoor Air
Quality

Thermostats

Oils &
Chemicals

Accessories, Supplies
& Commodities

Tools &
Instruments

Refrigeration