

8900 Series IAQ Controls

Aprilaire®
Your Partners in Comfort®



Model
8920W
Shown

Programmable



8900 Series Features & Benefits

- ✓ Wi-Fi with IAQ Control
Models 8910W, 8920W
- ✓ Integrated Indoor Air Quality Control
- ✓ Event-Based™ Air Cleaning
- ✓ Fresh Air Ventilation Timed or ASHRAE set-up
- ✓ Color touch screen **Model 8920W**
- ✓ 3-wire design
- ✓ Maintenance Reminders
- ✓ Heat Blast™ – schedule override
- ✓ Free Custom Imprintable Cover
Models 8910, 8910W
- ✓ Dealer info displayed on screen **Model 8920W**



**Intuitive User Interface
8920W**

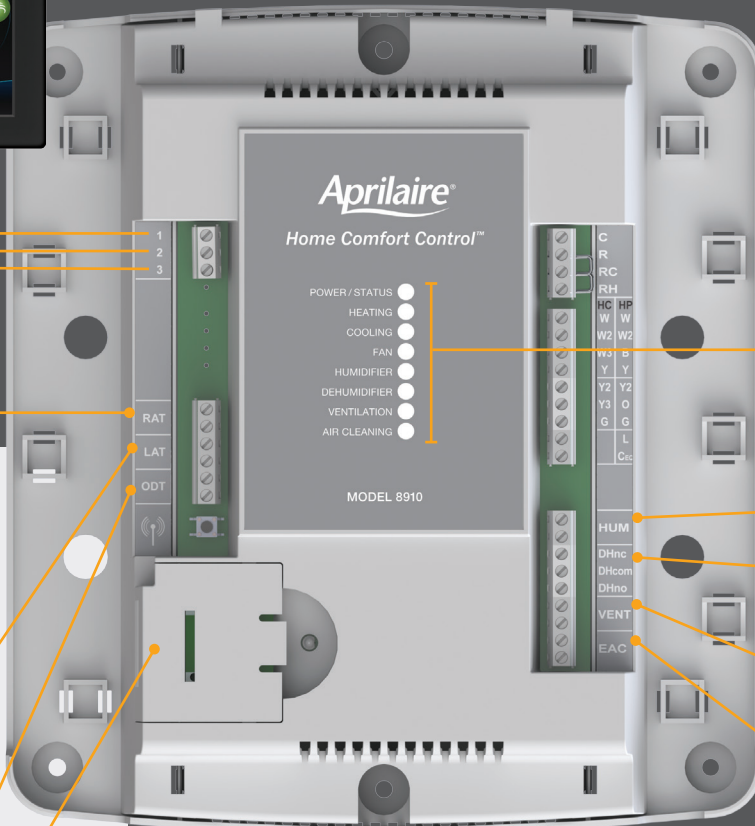


Equipment Control Module



8910 Also Available

3-Wire Connection



8 LEDs indicate HVAC Equipment and IAQ Accessory Status

Optional Return Air Temperature Sensor (RAT) provides protection with heating and cooling back-up control if connection is lost

Optional Leaving Air Temperature Sensor (LAT) provides the supply air temperature during the installer test

Included — **Wired Outdoor Temperature Sensor 8052 (ODT)**

Optional **Wireless Outdoor Temperature Sensor 8056 (ODT)**



Aprilaire 8900 Series IAQ Control

The Aprilaire 8900 Series IAQ Control Thermostats consist of two components, the User Interface and the Equipment Control Module. The User Interface, located in the living space, integrates all indoor air quality functions - heating/cooling, humidification/dehumidification, air cleaning and ventilation in one attractive, easy-to-use, touch screen control. The User Interface offers homeowners the ability to easily set all of their IAQ and HVAC products from one location in the living space. The primary screen indicates how to easily activate and control set points. In addition, the display provides the homeowner with confirmation that the equipment is operating at the desired control settings.

IAQ Control Features

Temperature Control

- + Universal Programmable Thermostat - 3H/3C Conventional or 4H/2C Heat Pump
- + Selectable, 7 day, 5/2, 5/1/1 or non programmable 2 or 4 events/day [Model 8910W](#)
- + 7 day or non-programmable 4 events/day [Models 8910W, 8920W](#)
- + Dual fuel operation
- + High and low balance points (must use ODT)
- + Screen lock-out to prevent unauthorized adjustments
- + Adjustable differential for all stages
- + Stage rate control uses equipment run time to control HVAC equipment staging
- + Progressive Recovery feature ensures that the setpoint is reached by the scheduled time
- + Heat Blast™ allows one touch control of heating to raise room temperature 3°F to 5°F



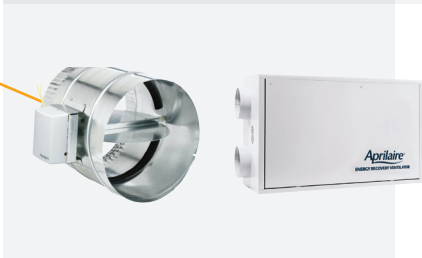
HUMIDITY CONTROL

Humidifier

- + Displays indoor RH on User Interface
- + Notifies when humidifier is active
- + Automatic humidity setpoint adjustment (must use ODT) or Manual Control
- + Water Panel® replacement reminder

Dehumidifier

- + Displays indoor RH on User Interface
- + Notifies when dehumidifier is active
- + Operates whole-home dehumidifier or air conditioner to dehumidify
- + Dehumidifier service reminder
- + Energizes HVAC blower when dehumidifying



FRESH AIR VENTILATION

- + Provides fresh air with a motorized damper or an ERV/HRV
- + Notifies when ventilation is active
- + Control limits based upon outdoor temperature and RH
- + Can be set up to use ASHRAE 62.2 guidelines or timed ventilation



AIR CLEANING

- + Event Based™ Air Cleaning - 4 selectable air cleaning events
 - Constant Cleaning (24/7)
 - Automatic (30 Min/Hr)
 - Event Clean (3 Hr Cycle)
 - Allergy (24 Hr Cycle)
- + Notifies when air cleaning is active
- + Media replacement reminder
- + Controls EAC with dedicated 24 VAC dry contact

8900 Series IAQ CONTROL THERMOSTATS

EASY TO INSTALL & MAINTAIN

- + 24 VAC powered with battery backup for user interface [Model 8910](#) only
- + Dual fuel operation (auto lockout of compressor w/call for back-up heat)
- + Programmable (or non-programmable)
- + Remote indoor sensor option w/8051/8053 sensors
- + Temperature offset $\pm 4^\circ$
- + High and low balance point control (requires 8052 sensor included)
- + 3H/3C conventional and 4H/2C heat pump
- + Configurable manual heat/cool or auto changeover modes
- + Configurable for heating only or cooling only operation
- + Large, easy-to-wire terminal block
- + Adjustable differential for 1st, 2nd, 3rd and 4th stages
- + Service reminders
- Humidifier, Air Cleaner, Dehumidifier, HVAC [Model 8910](#)
- Humidifier, Air Cleaner, Dehumidifier, Ventilation, HVAC [Models 8910W, 8920W](#)

ENGINEERED FOR EXCELLENCE

- + Circulate fan mode
- + Programmable fan
- + Progressive recovery
- + Built-in equipment protection
- + Equipment stage indication
- + Multiple hold options maximizes comfort and energy savings
 - Vacation hold
 - Customizable timed hold
 - Permanent hold
- + Permanent memory — programming, time and date isn't lost during a power outage
- + Heat Blast™ allows one touch control of heating to raise room temperature 3°F to 5°F
- + 5-year warranty

EASY & CONVENIENT TO USE

- + Large 10.3 sq. in. touch screen [Model 8910](#)
- + Large 20.4 sq. in. touch screen [Model 8920W](#)
- + Large font size
- + Fully back lit w/ constant low intensity light option
- + Exclusive message center (provides feedback and real language instructions)
- + Displays outdoor temperature (w/included 8052 sensor)
- + Real language programming/set up — no manual needed, no codes to memorize
- + Full or limited screen lockout
- + “Copy” function for quick and easy programming
- + Real time clock automatically adjusts for daylight savings time

Dimensions

User interface

6" x 4.85" x 1.25" [Models 8910, 8910W](#)
7.1" x 4.4" x 1" [Model 8920W](#)

Equipment control module

8.6" x 9.6" x 1.9"

Accessories

8052 Outdoor Temperature Sensor (included)

8051 Flush Mount Indoor Temperature Sensor (optional)

8053 Surface Mount Indoor Temperature Sensor (optional)

8056 Wireless Outdoor Temperature Sensor (optional)

Return Air Temperature Sensor (RAT) optional sensor provides protection with heating and cooling back-up control if connection is lost

Leaving Air Temperature Sensor (LAT) optional sensor provides the supply air temperature during the installer test

Thermal Specifications

Control range: 40° to 99°F (7° to 32°C)

Display range: 32° to 99°F (0° to 40°C)

Accuracy: $\pm 1^\circ\text{F}$ ($\pm .5^\circ\text{C}$)

Storage temperature: -30° to 140°F (-34.4° to 60°C)

Operating humidity: 5% to 90% relative humidity non-condensing

Operating ambient temperature of user interface: 32° to 120°F (0° to 48.9°C)

Operating ambient temperature of ECM: 32° to 158°F (0° to 70°C)

Shipping temperature range: -30° to 140°F (-34.4° to 60°C)

Electrical Specifications

24 VAC powered (18-30 VAC)

1 amp maximum load per terminal

2.5 amp total maximum load (all terminals)

Standard systems gas, oil, electric

Single stage/heat pump/multi-stage

Terminal Designations:

User interface: 1, 2, 3

Equipment control module: 1, 2, 3, RAT, LAT, ODT, C, R, RC, RH, W, W2, W3/B, Y, Y2, Y3/O, G, L, CEQ, HUM, DHNO, DHNC, DHCOM, VENT, EAC