

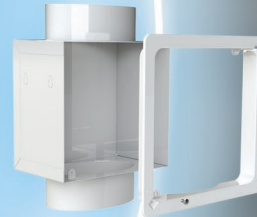


# Lint Trap LT4S

Empowered by Innovation



• Powder coated 21Ga low profile galvanized steel box with 4" oval duct adapters. Suitable for installation in a 2" X 4" wall.



• Fast and easy installation with finishing frame.



• 4" window to monitor lint accumulation.



• LT4S is equipped with a screen that filters the air that feeds into the dryer exhaust fan. The screen catches any airborne lint in the ductwork that isn't caught by the dryer's lint screen.

**The less lint accumulation, the better your dryer performs.**

Airborne lint from your home's dryer may accumulate in the exhaust duct causing clogging issues. Lint in the ductwork can quickly become a serious fire hazard. The secondary Lint trap installed between the dryer and the dryer exhaust ventilator filters the air, catches the lint and protects the exhaust fan and ductwork.



2480 Boul. des Entreprises Terrebonne, Quebec J6X 4J8 CANADA  
T: 450.477.1100 F: 514.313.5700 TF: 1.800.489.1301  
WWW.ATMOSPHERE.COM

FEBRUARY 2020

Customer support : [info@atmosphere.com](mailto:info@atmosphere.com)  
Sales inquiries : [sales@atmosphere.com](mailto:sales@atmosphere.com)

## Panasonic

Panasonic is the exclusive distributor of  
Atmosphere products in the US

Panasonic IAQ Division  
Two Riverfront Plaza  
Newark, NJ 07102  
[na.panasonic.com/us/iaq](http://na.panasonic.com/us/iaq)

For Order Information  
PHONE: 866-292-7299  
FAX: 888-553-0723  
[ventfans@us.panasonic.com](mailto:ventfans@us.panasonic.com)

Design and specifications subject to change without notice.