

Thru-the-Wall Packaged Heating & Cooling

Control Board

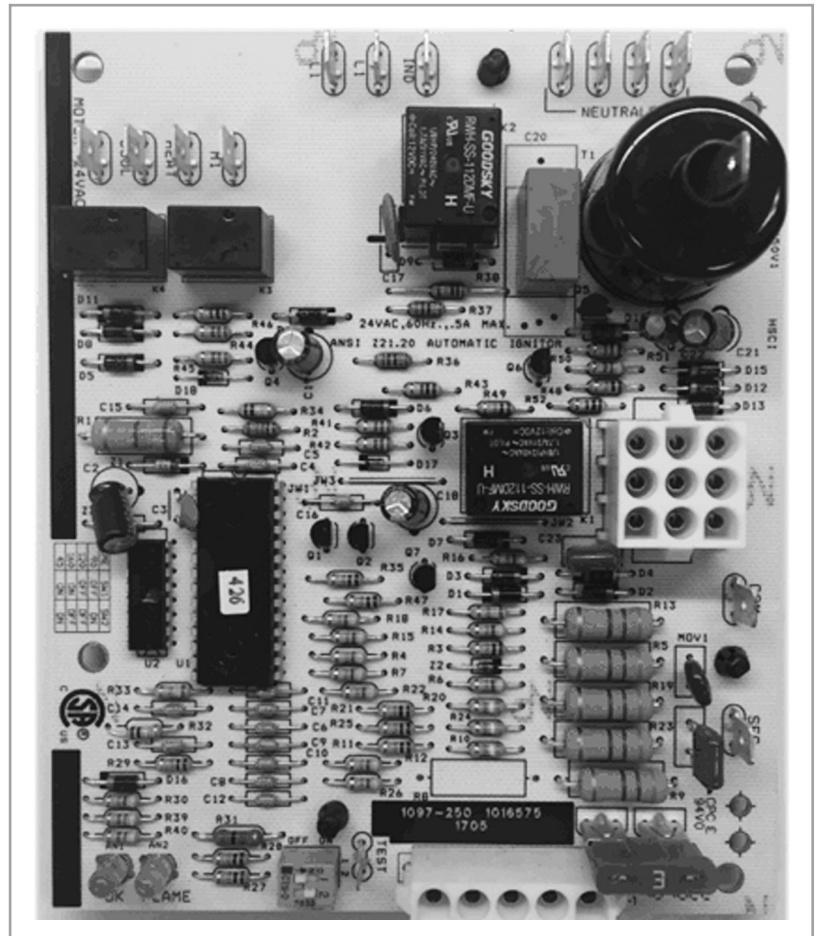
Conversion Kit Instructions

For Use with -U 11 Series or -U 12 Series Models Only

Kit Part#
14208607-KIT

*For all other U Series Equipment the Control Board is a direct replacement

**All non U Series models require 14208319 Control Board



Always start by disconnecting any power source and verifying it's safe to touch electrical components

National Comfort Products®

A Division of National Refrigeration & Air Conditioning Products, Inc.

539 Dunksferry Road | Bensalem, PA 19020 | (215) 244-1400 | 1-800-523-7138 | Fax: (215) 639-1674

New Control Board Instructions

Control Board P# 14208607 replaces Control Board P# 14208319 in only U model Comfort Packs.

Please follow the instructions related appropriately to the model number

When installing in CPG4**-U11 models (Please note that U11 models (single relay) may have been previously modified to U12 wiring (double relay). If so follow instructions for installing in CPG4****- U12 models.)**

See Figure 1

1. Remove wire 1, 2, 3 & 4 from device 1 (Inducer Relay)
2. Remove wire 5 & 6 from both device 1 (inducer relay) and device 2 (original control board) discard both wires and device1 (inducer relay).
3. Remove all remaining wires and Molex plugs from device 2 (original control board). Discard wire 8 at this time.
4. Remove device 2 (original control board) and install device 3 (replacement control board)

See Figure 3

5. Connect wire 1 to NEUTRALS terminal
6. Connect wire 2 to L1 terminal
7. Connect wire 3 to NEUTRALS terminal
8. Connect wire 4 to IND terminal
9. Connect wire 7 to 24V FAN terminal and SEC terminal
10. Connect wire 11 also to SEC terminal
11. Connect wire 9 to COOL terminal
12. Connect wire 10 to HEAT terminal
13. Connect wire 12 to COM terminal
14. Connect both Molex plugs and orange spark ignitor wire.

New Control Board Instructions

When installing in CPG4****-U12 models

See Figure 2

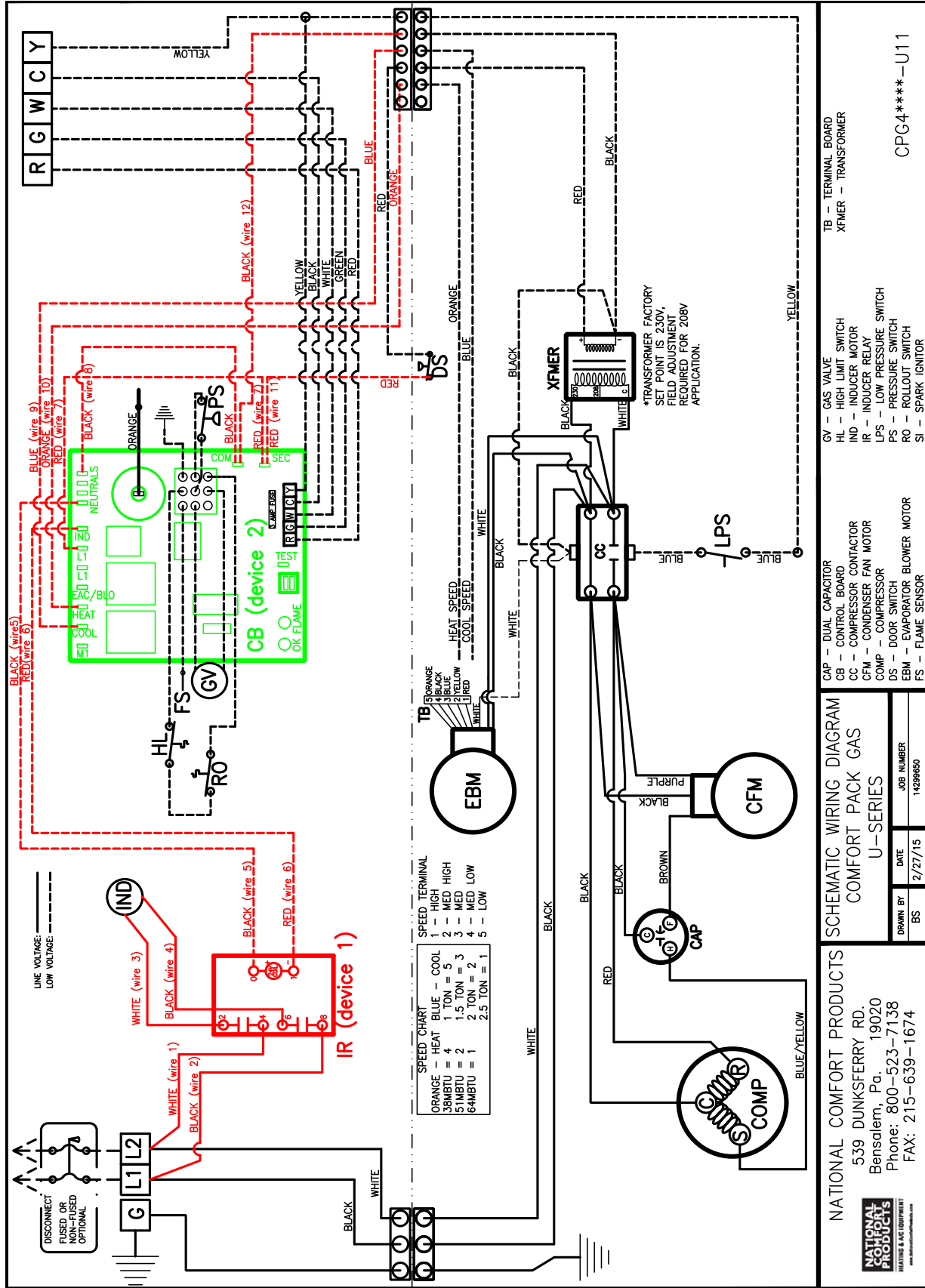
1. Remove wires 5, 6, 7, 8, 9 & 10 from device 1 (blower relay kit) and discard device 1 (blower relay kit).
2. Remove all wires and molex plugs from device 2 (original control board). Discard wires 5, 6 & 8 at this time.
3. Remove device 2 (original control board) and install device 3 (replacement control board)

See Figure 3

4. Connect wire 1 to NEUTRALS terminal
5. Connect wire 2 to L1 terminal
6. Connect wire 3 to NEUTRALS terminal
7. Connect wire 4 to IND terminal
8. Connect wire 7 to 24V FAN terminal and SEC terminal
9. Connect wire 11 also to SEC terminal
10. Connect wire 9 to COOL terminal
11. Connect wire 10 to HEAT terminal
12. Connect wire 12 to COM terminal
13. Connect both Molex plugs and orange spark ignitor wire.

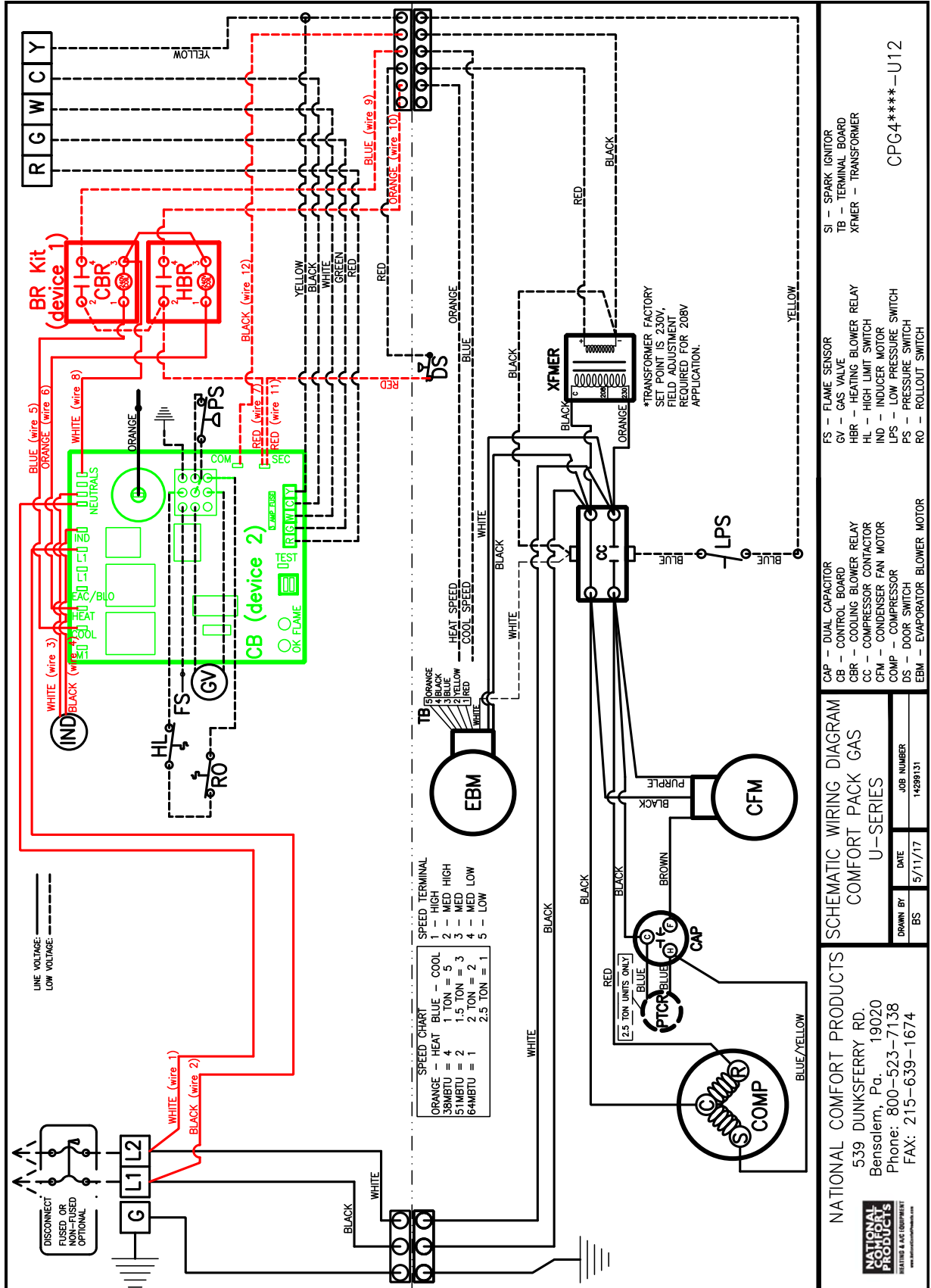
New Control Board Instructions

Figure 1



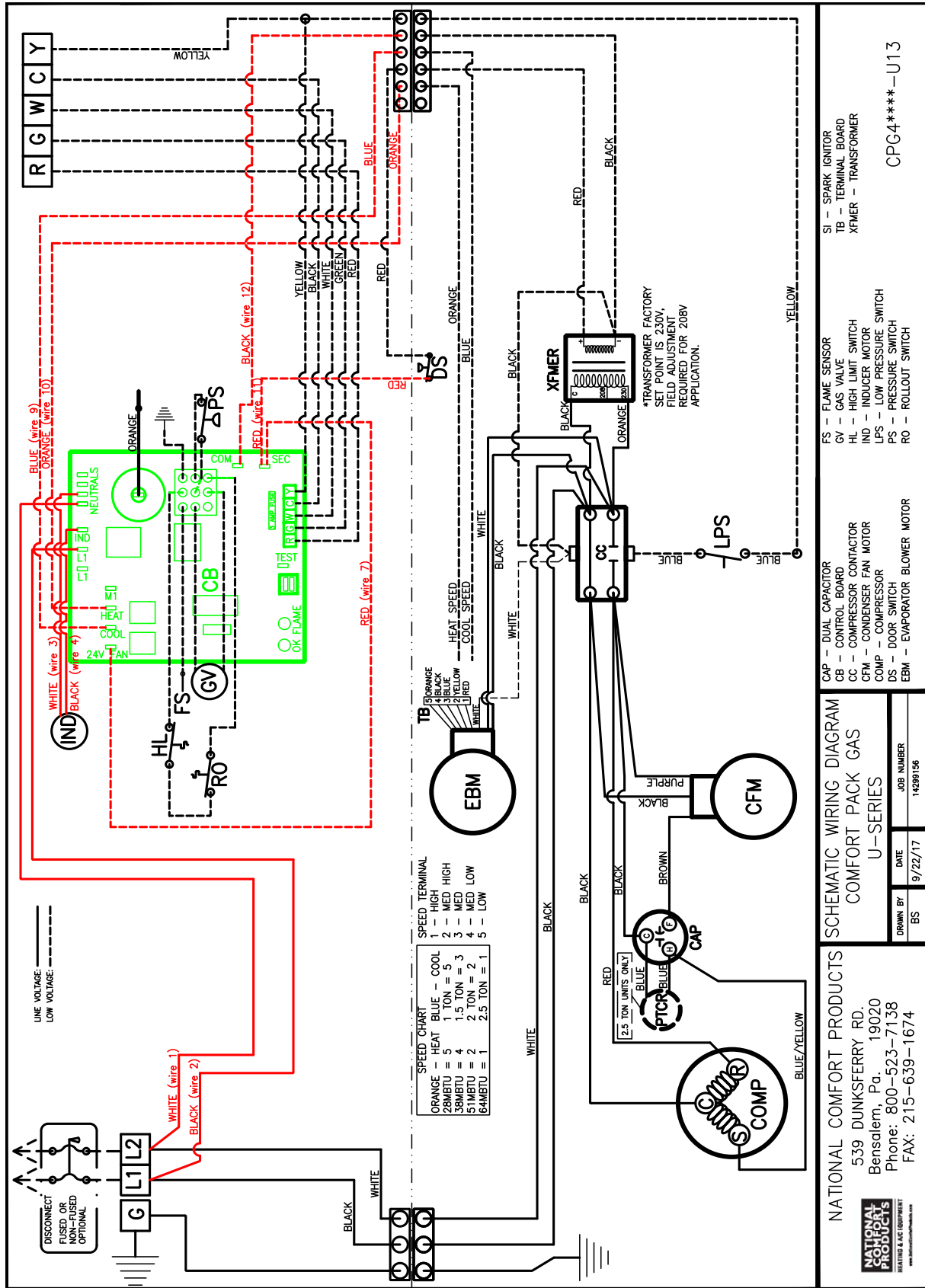
New Control Board Instructions

Figure 2



New Control Board Instructions

Figure 3



**NATIONAL[®]
COMFORT
PRODUCTS**

HEATING & A/C EQUIPMENT

National Comfort Products[®]

A Division of National Refrigeration & Air Conditioning Products, Inc.

539 Dunksferry Road | Bensalem, PA 19020

1-800-523-7138 | Fax: (215) 639-1674

www.NationalComfortProducts.com

