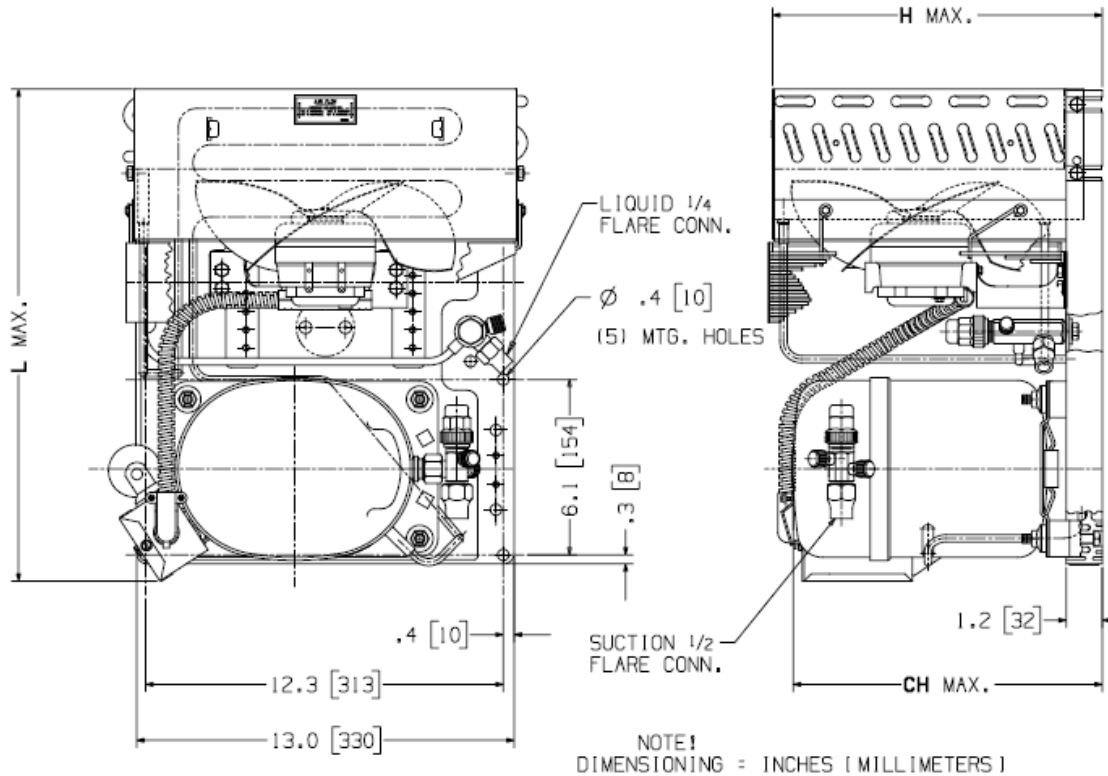




Tecumseh Products Company

Hermetic Condensate Evaporative Unit

Model: AKA7437YXAED BoM: 32D208-1 R134a 1/2 HP



Model	Dimensions, inches				Line Connection*		Pumpdown	Air	Oil Ch	Gr. Wt.
	L	W	H	CH	Suction	Liquid	90 °F 90%	SCFM	Oz.	Lbs.
AKA7437YXAED	17.0	14.5	11.4	10.6	1/2" S	1/4" S	N/A	350	17	63

* F = Flare, S = Solder, RF or RS = Rotolock with Flare or Solder Connections, C = Compression Fitting
Factory charge: 20 PSIG Nitrogen – **MUST BE EVACUATED**

Evaporator T,		Ambient Temperatures											
		80°F			90°F			100°F			110°F		
°F	PSIG	BTUH	Watts	Cond T	BTUH	Watts	Cond T	BTUH	Watts	Cond T	BTUH	Watts	Cond T
-10	2.2	1470	450	91	960	460	100	680	440	107	350	410	114
-5	4.4	1940	510	95	1460	520	104	1180	500	111	840	480	118
0	6.7	2410	570	99	1960	580	108	1680	560	114	1320	550	123
5	9.3	2880	620	102	2450	630	111	2180	620	118	1790	620	126
10	12.1	3350	680	106	2940	690	114	2670	690	121	2260	690	130
15	15.3	3830	740	110	3440	750	118	3160	750	124	2720	760	134
20	18.6	4310	800	114	3940	820	121	3650	820	128	3180	840	137
25	22.3	4800	870	117	4440	880	124	4140	890	131	3630	920	140
30	26.3	5300	930	122	4940	950	128	4630	970	134	4080	1000	143

60 Hz Performance

Return gas temp 40°F below 20°F evaporator,
and 65°F above 20° evap, 5°F sub cooling

Specifications/ Parts:

Unit Model	AKA7437YXAED
Unit Bill of Material	32D208-1
Refrigeration Range	-10 F to 30° F
Design Pressure Low	150
Design Pressure High	450
Nominal Volts-Hz-Ph	115/60/1
Voltage Range	103-127
Min. Circuit Ampacity	14.71
Max. Fuse Size (amps)	25
Compressor Model	AKA4476YXA
Comp. Bill of Material	AK169AT-038-J7
Compressor RLA/LRA	11.3/58.8
Overload	8300MRAG17
Relay	8200EMBJ98
Run Capacitor	N/A
Start Capacitor	85PS125D83

Fan Motor	810L009B96
Fan Motor RLA	0.58
Fan Blade	4VEA006
Fan Shroud	71034
Fan Guard	70959
Condenser	50840-2
Receiver Tank	N/A
Liquid Valve	56594-1
Suction Valve	31582-1
Power Cord	N/A
Unit Drawing	DGU1915-1V
Wiring Diagram	90701
Replacement Kit: Relay	K71-02
Replacement Kit: O/L	K90-27
Replacement Kit: St. Cap	K146-52

Electrical Diagram

