

# Totaline® CG1000 1" Electronic Air Cleaner

## Take cleaner indoor air for granted...

### With Totaline® CG1000 1" Electronic Air Cleaners.

We spend almost 90% of our lives indoors. Household cleaners, aerosols, sprays, pollens, molds, allergens, airtight homes, smoke and viruses are causes of poor indoor air quality.

Studies\* have shown that the air inside our home can be even more polluted than outdoor air. The rates of asthma and airborne related illnesses are on the rise. Many allergists and physicians are recommending air cleaning products for their patients.

The Totaline® CG1000 Electronic Air Cleaner is a unique patented technology. It helps keep your indoor air cleaner. It's safe, reliable and effective in removing key contaminants from indoor air.

*\*Studies as stated on [www.epa.gov](http://www.epa.gov)*

**95% Efficient Down To 1.0 micron**

**TOTALINE**

Universal HVAC/R  
Parts and Supplies

**What are you working on today?™**

# Totaline® CG1000 1" Electronic Air Cleaners

## Here are some reasons why...



### Totaline® CG1000 1" Electronic Air Cleaners

are safe, reliable, convenient and designed with features to fit your needs.

It lets you take cleaner indoor air for granted. It has the features, performance and convenience you should require for your home.

We have a wide range of sizes to fit any heating or cooling ventilation system. Ask your dealer for further information and sizing for your system.

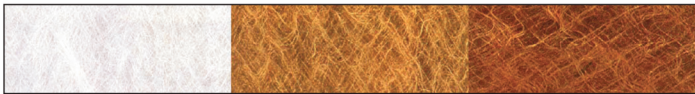
Standard Sizes Include:

14" x 25", 16" x 20", 16" x 25", 20" x 20", 20" x 25"

### How it works in your home.

The Totaline® CG1000 1" Electronic Air Cleaner creates a polarized charge to act like a powerful magnet. The media pads attract and hold the harmful contaminants. The electronic process runs off of 24 volts and is extremely quiet.

### Electronically Charged Media



Fresh, Clean  
Media Magnetic  
Attraction

After 1 Month  
Collects  
Contaminants

After 4 Months  
(Recommended Change  
Every 3-4 Months)

*Simulation of what could  
happen if left unchanged  
for four months, not based  
on actual test results*

**TOTALINE**








Universal HVAC/R  
Parts and Supplies

# Totaline® CG1000 1" Electronic Air Cleaners

## Here are some more reasons why...

### Effectiveness!

#### Totaline® CG1000 1" Electronic Air Cleaners Effectiveness:

Airborne Pollutants	Actual Micron Particle Size Range	A Proportionate Particle Size Comparison
Human Hair	35-200 microns	
Pollen	10-100 microns	
Spores	10-35 microns	
Bacteria	.3-35 microns	
Animal Dander	.3-10 microns	
Lung Damaging Dust	.5-5 microns	
Smoke	.01-1 microns	

Information Source: American Industrial Hygiene Association



### It's easy as **1-2-3** to maintain.

Simply remove the Totaline® CG1000 Electronic Air Cleaner as you would a throw away filter.

- 1** Open the air cleaner
- 2** Remove the dirty media pads
- 3** Insert 2 new Star replacement media pads  
(Repeat every 3-4 months)

No other maintenance is needed. You enjoy the benefits of increasing your indoor air quality in 3 simple steps. We supply the replacement media pads, cut to size, making it easier for replacement.



Universal HVAC/R  
Parts and Supplies



# Totaline® CG1000 1" Electronic Air Cleaners

## Part Numbers (dimensions in nominal inches)

EAC P/N	Media P/N	Actual Dimensions
P101-1224C	P101-1224M	11 $\frac{5}{8}$ " x 23 $\frac{5}{8}$ "
P101-1420C	P101-1420M	13 $\frac{3}{8}$ " x 19 $\frac{3}{8}$ "
P101-1424C	P101-1424M	13 $\frac{3}{8}$ " x 23 $\frac{3}{8}$ "
P101-1425C	P101-1425M	13 $\frac{3}{8}$ " x 24 $\frac{3}{8}$ "
P101-1430C	P101-1430M	13 $\frac{3}{8}$ " x 29 $\frac{3}{8}$ "
P101-1520C	P101-1520M	14 $\frac{5}{8}$ " x 19 $\frac{5}{8}$ "
P101-1616C	P101-1616M	15 $\frac{5}{8}$ " x 15 $\frac{5}{8}$ "
P101-1620C	P101-1620M	15 $\frac{5}{8}$ " x 19 $\frac{5}{8}$ "
P101-1624C	P101-1624M	15 $\frac{5}{8}$ " x 23 $\frac{5}{8}$ "
P101-1625C	P101-1625M	15 $\frac{5}{8}$ " x 24 $\frac{5}{8}$ "
P101-1820C	P101-1820M	17 $\frac{3}{8}$ " x 19 $\frac{3}{8}$ "
P101-2020C	P101-2020M	19 $\frac{3}{8}$ " x 19 $\frac{3}{8}$ "
P101-2024C	P101-2024M	19 $\frac{3}{8}$ " x 23 $\frac{3}{8}$ "
P101-2025C	P101-2025M	19 $\frac{3}{8}$ " x 24 $\frac{3}{8}$ "
P101-2030C	P101-2030M	19 $\frac{3}{8}$ " x 29 $\frac{3}{8}$ "
P101-2424C	P101-2424M	23 $\frac{3}{8}$ " x 23 $\frac{3}{8}$ "
P101-2425C	P101-2425M	23 $\frac{3}{8}$ " x 24 $\frac{3}{8}$ "
P101-2430C	P101-2430M	23 $\frac{3}{8}$ " x 29 $\frac{3}{8}$ "

## Part Numbers (exact sizes)

P101-1321C	P101-1321M	13" x 21 $\frac{1}{2}$ "
P101-1621C	P101-1621M	16 $\frac{3}{8}$ " x 21 $\frac{1}{2}$ "
P101-1821C	P101-1821M	18 $\frac{3}{8}$ " x 21 $\frac{1}{2}$ "
P101-2021C	P101-2021M	19 $\frac{3}{8}$ " x 21 $\frac{1}{2}$ "
P101-2123C	P101-2123M	21 $\frac{1}{2}$ " x 23 $\frac{5}{16}$ "
P101-CAR1C	P101-CAR1M	13" x 24 $\frac{5}{16}$ "
P101-CAR2C	P101-CAR2M	23 $\frac{1}{2}$ " x 24 $\frac{5}{16}$ "

## How To Order A Custom Size EAC or Media

Definitions for Custom Sizes:

**Custom Exact 1" (P101-5010C or P101-5010M)**

Not undercut in any dimension

Example:

18" x 18" x 1"- Actual Dimensions = 18" x 18" x 1"

**Custom Nominal 1" (P101-5000C or P101-5000M)**

Nominal = Undercut by  $\frac{3}{8}$ " in each dimension

Example:

18" x 18" x 1"- Actual Dimensions = 17 $\frac{5}{8}$ " x 17 $\frac{5}{8}$ " x 1"

**Custom Exact 2" (P101-5010C2 or P101-5010M2)**

Not undercut in any dimension

Example:

18" x 18" x 2"- Actual Dimensions = 18" x 18" x 2"

**Custom Nominal 2" (P101-5000C2 or P101-5000M2)**

Nominal = Undercut by  $\frac{3}{8}$ " in each dimension

Example:

18" x 18" x 2"- Actual Dimensions = 17 $\frac{5}{8}$ " x 17 $\frac{5}{8}$ " x 2"

1" Custom sizes available in nominal, exact and oversized. Also available in 2" thickness for commercial applications.

## Disposable Replacement Media Pads

The Totaline® CG1000 Electronic Air Cleaner creates a polarized charge on the media pads, causing airborne particles to "stick" to the pads. This provides a means of disposing of the particles and removing them as the media pads are replaced. Recommended replacement is every 4 months.



- Hypo Allergenic Material
- High Density
- Fire Retardant
- Unique Dry Weave Material
- Pre-Cut to Size
- Highest Surface Area
- Safe, Simple Replacement
- 1 package contains 6 pads (2 pads required per changeout)



Universal HVAC/R  
Parts and Supplies