

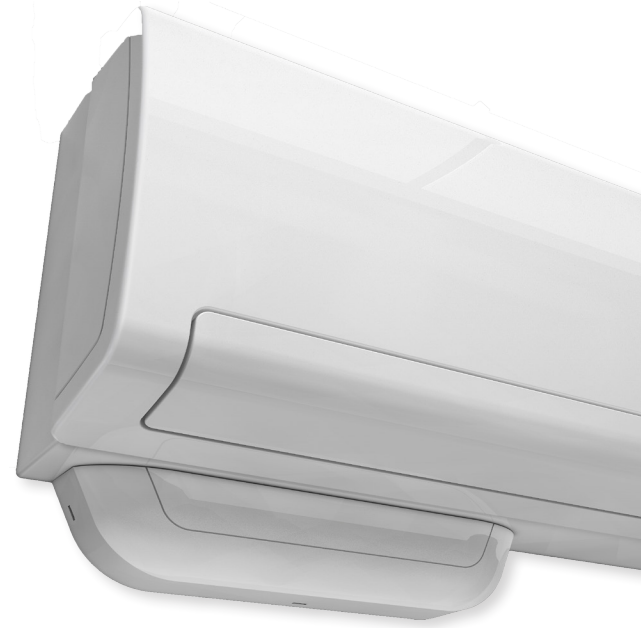


Omega Pack



Mini condensate removal Pump

The performance of our Si-20 with a sleek case for install under the air conditioning unit.



SUITABLE FOR

- Up to 5.5 tons
- Wall mounted units

PERFORMANCE

- 5 gph max. flow
- 33' max. discharge

Key features

- Modern design
- Reversible mounting
- Rubber dampers
- Drain safe device

Omega Pack tech specs

MAX. FLOW RATE: 5.0 gph

MAX. DISCHARGE HEAD: 33ft; flow rate = 1 gph

MAX. PRESSURE: 46ft; flow rate = 0 gph

SOUND LEVEL AT 3.3FT: 22 dBA according to EN ISO 3744 (Measured at LNE lab, pump operating with water, out of application)

POWER SUPPLY: 120 V ~ 60 Hz - 14 W (OP20UL01UN12)
230 V ~ 50/60 Hz - 14 W (OP20UL01UN23)

INSULATION CLASS: Double Insulation

DETECTION LEVELS: On: 3/8" • Off: 7/16" • Safety: 3/4"

SAFETY SWITCH: NC 8A resistive - 250 V

THERMAL PROTECTION: 240°F auto-reset

OPERATING CONDITIONS: 120V - 50%: 3s ON - 3s OFF
230V - 60%: 3s ON - 2s OFF

COLOR: RAL 9010 - Pure white

COVER DIMENSIONS: L 12 7/8" x W 2 1/4" x H 2 1/2"

SAFETY STANDARDS: UL / CSA certified by Intertek

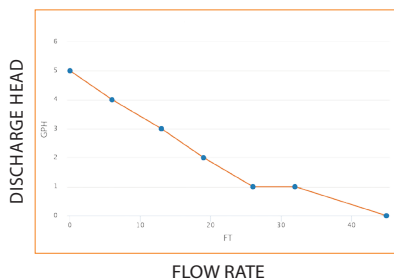
RoHS & WEEE DIRECTIVES: Compliant

PACKAGING: 1.61 lbs - L 14 1/8" x W 3 3/8" x H 4"

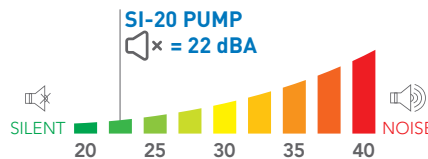
MASTERPACK: 6 pieces



Actual flow rates (GPH)



Sound level



Recommended accessories



- Clear PVC hose, 1/4" i.d.
- ACC 00105: 16ft roll
 - ACC 00150: 164ft roll



- Self-sealing fitting to connect discharge tube to drain pipe.
- 6 pcs, for 1/4" i.d.

What's in the box



- Si-20 piston pump with clear pvc tube fitted with a pre-mounted drain safe device
- 5' power cable: 2 power wires, 2 safety contact wires
- Anti-vibration rubber damper
- Case, 2 pieces: backplate & cover
- 3 screw & plugs for affixing backplate
- Detection unit - Si2958, 2' cable
- Detection unit installation kit:
 - Rubber elbow
 - Vent tube
 - Split connector
 - 3 double wire clamps
 - 3 tie wraps



SCAN THIS QR CODE FOR ADDITIONAL OMEGA PACK TECHNICAL INFORMATION