

GHE-II

HIGH EFFICIENCY
Gas-Fired
Heating Boiler & Combi



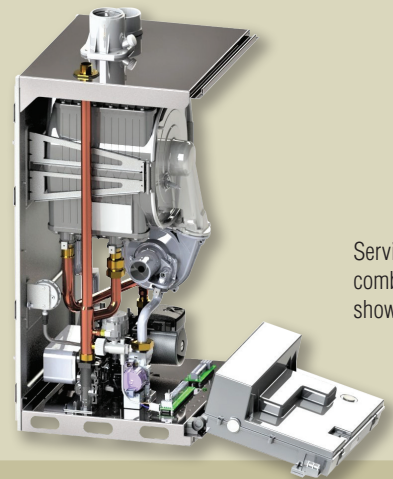
JUST HANG AND HEAT!

- No complications – 5-minute start-up
- No-touch, automatic combustion setup
- No manual throttle or offset adjustments
- No interference – unobstructed 3-side service access
- No outdoor sensor required – rate-based temperature reset
- No kits or extra parts required – simple 2-step LP conversion,
- Primary/secondary manifold available
- Low gas pressure capability
- 5-year parts warranty, 12-year limited HX
- 95% AFUE



COMBI MODELS

- Virtually instantaneous DHW response time
- Primary/secondary manifold included



Service view,
combi model
shown

NYB Connect
COMPATIBLE

Puts complete boiler control installation, and troubleshooting in the palm of your hand. See www.newyorkerboiler.com for more details.



**NEW
YORKER**
YOUR BOILER COMPANY

GHE-II Technical Information



Model	AFUE %	Heating Input (MBH) min-max	DOE Heating Capacity (MBH)	Net AHRI (MBH)	DHW Rates			Vent Size (In.)	Boiler Wt. (lbs.)
					at 70° TR (GPM)	at 77° TR (GPM)	Input (MBH) min-max		
GHE2C-136B	95.0	13.6-120	113	98	3.7	3.4	13.6-136	2	95
GHE2C-200	95.0	20-150	141	123	5.2	4.7	20.0-200	2	116
GHE2-080	95.0	8-80	75	65	—	—	—	2	71
GHE2-120B	95.0	13.6-120	112	97	—	—	—	2	76
GHE2-150	95.0	20-150	141	123	—	—	—	2	103
GHE2-180	95.0	20-180	169	147	—	—	—	2	103

Net AHRI Water Ratings shown are based on a piping and pickup allowance of 1.15. The manufacturer should be consulted before selecting a boiler for installations having unusual piping and pickup requirements, such as intermittent operation, extensive piping systems, etc.

Safety Relief Valve Pressure, Water – 30 PSI std. ASME certified “H”. Maximum Allowable Working Pressure at 50 PSI. Max allowable temperature setting 210°F. Target setpoint is 180°F, manual reset high limit setpoint is 210°F. Boilers shipped set for natural gas. Performance indicated on chart is for elevations to 2000 ft. with minimum vent length. Boiler SKUs with “G00” suffix may be installed, and set for, altitudes up to 10,100 ft..

Standard Equipment

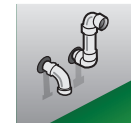
- Direct vent, high turndown, sealed combustion
- Altitude capability to 10,100 feet (SKU suffix “G00”)
- Stainless steel 316L heat exchanger, corrosion resistant
- Control system
 - Automatic “no-touch” combustion management
 - Built-in self diagnostics
 - 2 inputs (T-stat, DHW)
 - Warm weather shutdown
 - Two step LP conversion at gas valve switch and display - no kit purchase required
 - Sensor-less, rate-based reset
 - Fuse protected, spare fuses provided
 - Separated high and low voltage connections
- Boiler flow safety switch (UL353)
- Low gas pressure capability;
 - Min: 2.5 in. wc (nat gas), 8.0 in. wc (LP gas)
- Three side, unobstructed service access jacket
- Vent connection for CPVC/PVC, polypropylene
- Pre-installed hanging bracket and wall mount kit
- Circulator
 - Grundfos 26-99 (heating-only models)
 - Grundfos UPS-78 Special (combi models)

Combi Models

- Integrated hydro block system with flat plate heat exchanger, boiler circulator, and 3-way valve
- Pre-made primary/secondary manifold
- DHW recirculation mode
- DHW temp maintained under all conditions
- 10:1 DHW turndown

Typical Venting Configurations (Horizontal and Vertical)

Illustrations are for representation only. For complete venting information, please see Installation, Operating and Service Instructions.



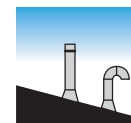
Horizontal 2-pipe



Horiz. 2-pipe concentric



Horiz. 2-pipe low profile



Vertical 2-pipe



Vertical 2-pipe concentric

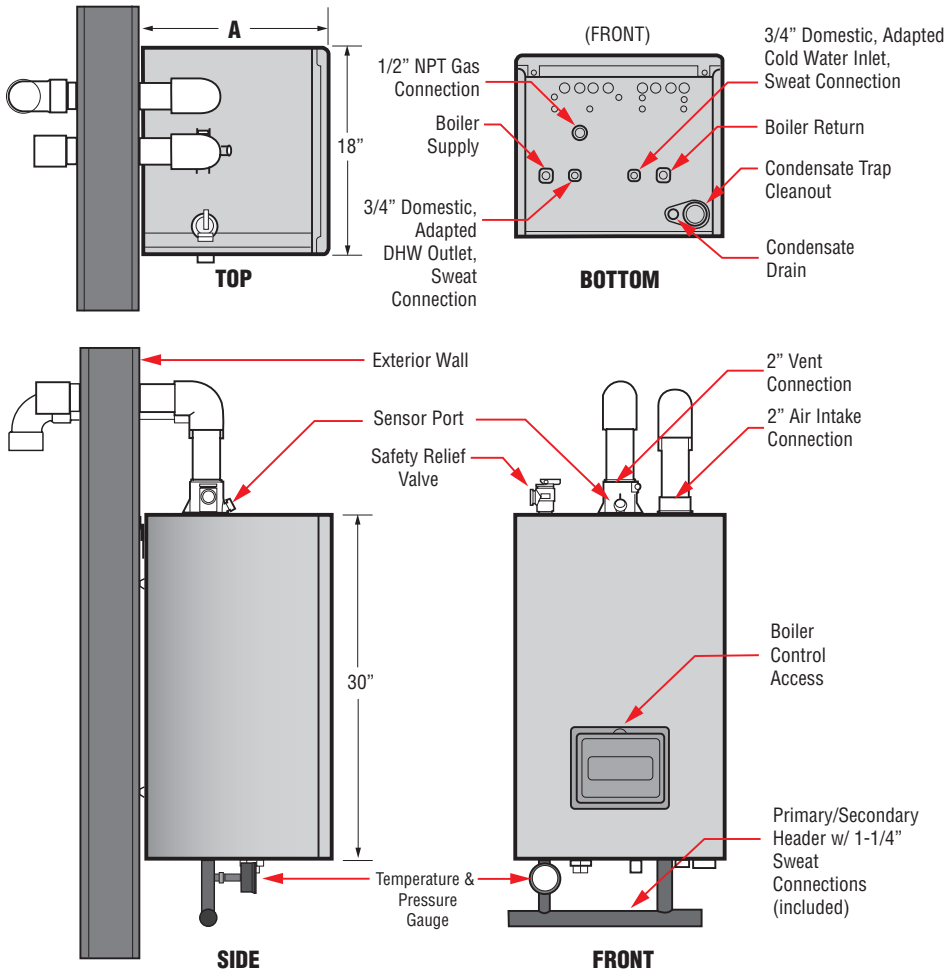


Hybrid



Vertical exhaust/sealed B-vent for combustion air

PLUS polypropylene chimney chase option



Boiler Depth	
Model	"A"
GHE2C-136	16.3"
GHE2C-200	20.4"
GHE2-080,120	16.3"
GHE2-150,180	20.4"

Accessories:

- NYB-Connect bluetooth adapter (P/N: 111669-01)
- Primary/secondary manifold kit, heating-only models (P/N: 111884-01)
- Floor stand kit (P/N: 111576-01)
- Kit, CPVC starter and PVC vent terminations: (2" P/N: 107039-01; 3" conversion P/N: 111945-01)
- LWCO, Hydrolevel 1100, auto reset, 24v w/ H5 cable (P/N: 105591-01)
- Thermostatic mixing valve, 3/4" sweat (P/N: 108042-01)
- Recirculation /header sensor (P/N: 108703-01)
- LP altitude electrode - 150, 180, 200 for LP only: (P/N 111745-01)



www.newyorkerboiler.com
info@newyorkerboiler.com
©2025 New Yorker Boiler, Lancaster, PA