

# AprilAire

## Ventilation

### SUBMITTAL SHEET

## Model 8145A

Fresh Air Ventilator with  
Power Damper and Filter

Project: \_\_\_\_\_

Dealer: \_\_\_\_\_

Architect: \_\_\_\_\_

Engineer: \_\_\_\_\_

Contractor: \_\_\_\_\_

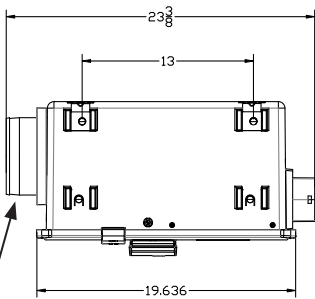
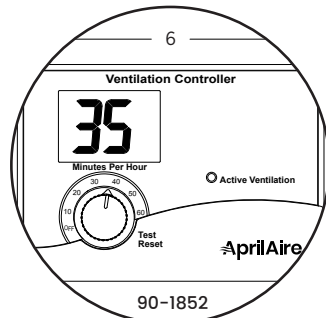
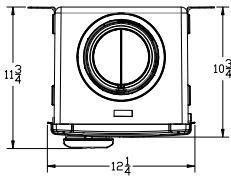
Location: \_\_\_\_\_

Suppliers: \_\_\_\_\_

Date: \_\_\_\_\_

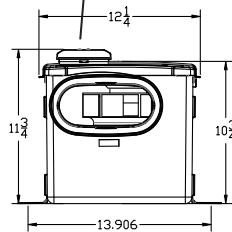


8145A



INLET  
Round collar  
for 6" dia. duct

OUTLET  
Oval collar for  
6" dia. duct



90-2514

### GENERAL DESCRIPTION

- Model 8145A improves indoor air quality by bringing the appropriate amount of outdoor air into tight homes and complies with ASHRAE Standard 62.2.\*
- Integrated control optimizes energy savings by locking out ventilation during hottest/coldest times of the day.\*†
- Motor 55 watts; 0.5 amps (FLA) @ 115v/LPH/60Hz
- 6-foot power cord with a standard 5-15P plug provided with unit
- 24-volt wiring to HVAC system. Furnace or air handler does not require an EC motor to qualify to meet the ventilation efficiency requirements of Energy Star for homes, or 2012 - 2018 International Energy Code
- Integrated powered damper and removable, washable MERV 6 filter. Replacement MERV 13 filter available.
- For indoor use only; Installation temperature up to 140°F
- Duct collars accept 6" duct
- ETL listed
- When properly installed and set, it will meet the following mechanical ventilation requirements:\*\*
- ASHRAE Standard 62.2
- Energy Star for Homes
- EPA Indoor airPLUS
- 2018/2015/2012 International Residential Code (IRC)
- 2018/2015/2012 International Energy Conservation Code (IECC)
- California Energy Commission Title 24

### SPECIFICATIONS

External Static Pressure*** ("w.c.)	Airflow (CFM)	Efficacy (CFM/watt)
0.0	210	5.2
0.2	180	4.4
0.4	150	3.5
0.6	120	2.8

\* Model 8145A only.

\*\* 8145NC compliance is subject to the functionality of the external control. To assure compliance, use an 8910, 8910W, 8920W, 8620 or 8620W thermostat 8120A or 8120X ventilation controller.

\*\*\* Measured across ventilator.

† Pat. No. 9,874,366. Applies to all controls listed above.



5-year warranty on all installed products  
(warranty does not apply to filters)



Designed & Engineered  
in the USA

\* with US and imported parts