
ELECTRIC BOILERS

 **Made in USA**

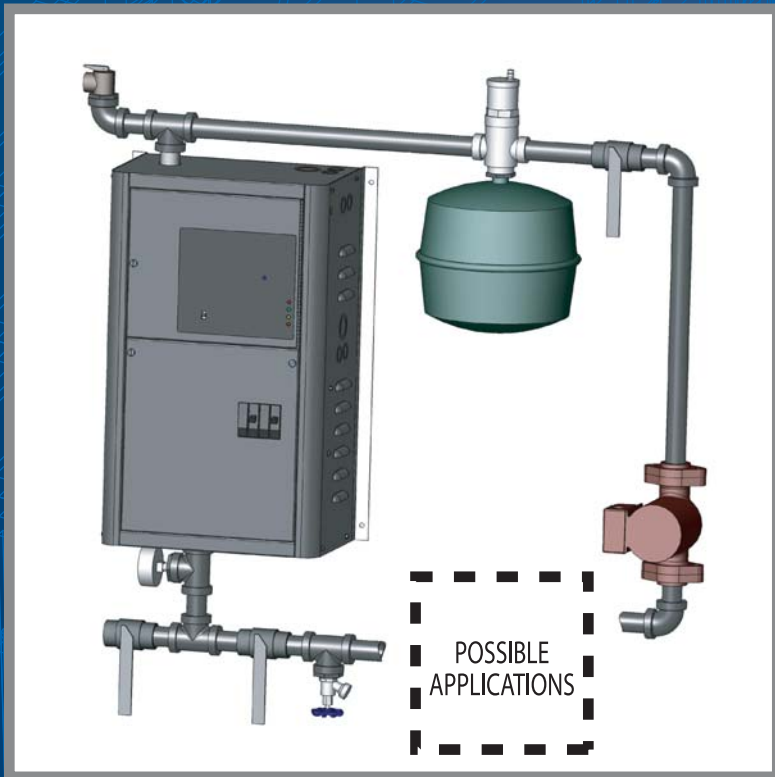


A complete product line to fit all your application needs

The Electro-Boiler™ has been heating America's homes and businesses since 1980. We take pride in our craftsmanship and we use only the best materials to ensure a high quality product. We are committed to you and we are confident that you will be completely satisfied with the Electro-Boiler.



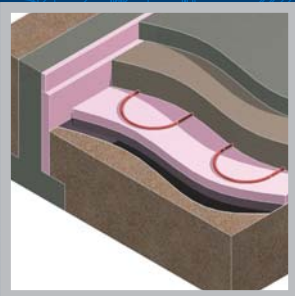
Electro-Boiler™ Applications



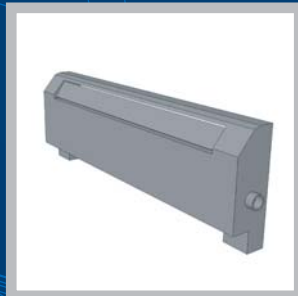
Electro Industries' Electro-Boiler products are packaged with features, advanced technology, and quality construction that are carefully made in the USA to ensure easy installation and exceptionally long service life.

This is backed by our 20-year vessel and element limited warranty* and our 2-year controls limited warranty.

Our attention to quality doesn't stop at our boilers; we offer direct, live and local technical support with over 25 years of boiler manufacturing experience.



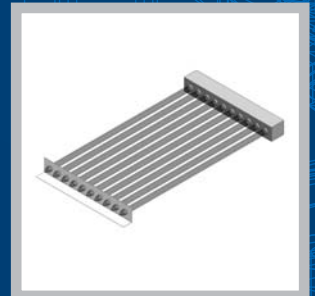
Radiant Heat Storage



Baseboard



Dual Boiler



Solar Assist

*Residential only, certain conditions apply. †Optional equipment not included with basic boiler. ‡Built in accordance to ASME Section IV.

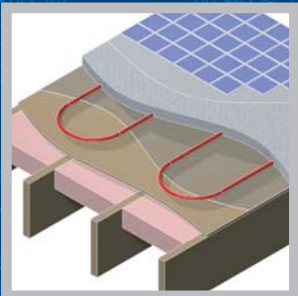
Achieve ultimate system control using our communicating Zone Controllers which enhance the staging of the Electro-Boiler:

- Zone valves or pumps
- Dual temperature
- Priority zone
- 40VA transformer
- Digital or standard thermostats

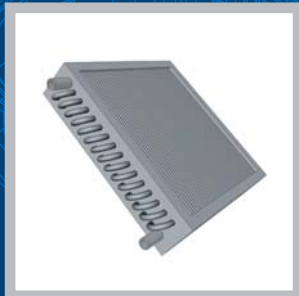


Together with these world-class features our boilers also include:

- Easy access controls for professional installations
- Internal circulator pump relay to simplify wiring
- Communicating zone controls[†] for the ultimate in complete system control
- Simple to use utility load control connections
- Front panel LED indicator lights for easy to read boiler status
- Quiet operation
- Temperature output sensing enabling the desired design temperature
- Easy setup controls to reduce installation time
- ASME H Stamp[‡] and CSA approved to assure years of reliable service
- 30 psi pressure relief valve



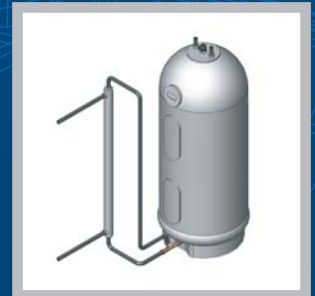
Radiant Floor



Water Coil



Radiator



Water-to-Water Heat Exchanger

Whether you are installing a simple, single zone system or a system with multiple boilers and zones we have the boiler and accessories to meet your needs. Contact your Electro Industries distributor today.



MINI-BOILER SERIES

Dimensions

- 11"W x 25"H x 9"D
- 3/4" NPT
- 53 lbs
- 0.95 gallon vessel

Specification Sheet

- BL306

Model	kW	Btu/h	Amps	Voltage	Breakers
EMB-S-1	1.1	3,800	9	120	N/A
EMB-S-2	2.5	8,500	21	120	N/A
EMB-S-4	5	17,000	42	120	N/A
EMB-*-5	4.5	15,000	19	240	30A
EMB-*-7	7	24,000	29	240	45A
EMB-*-9	9	31,000	38	240	60A

*S = Staging (max operating temp 160° F) H = Modulating (max operating temp 180° F)

Model	kW	Btu/h	Amps	Voltage	Breakers	Max Op Temp
EB-MS-10	10	34,000	42	240	60	160° F
EB-MS-15	15	51,000	63	240	60, 30	160° F
EB-MS-20	20	68,000	83	240	60, 60	160° F
EB-MX-10	10	34,000	42	240	60	180° F
EB-MX-15	15	51,000	63	240	60, 30	180° F
EB-MX-20	20	68,000	83	240	60, 60	180° F

MIDSIZE SERIES

Dimensions

- 17"W x 28"H x 10"D
- 1" NPT
- 75 lbs
- 2.20 gallon vessel

Specification Sheet

- BL509



TS SERIES

Dimensions

- 17"W x 38"H x 17"D
- 1-1/4" NPT
- 150 lbs
- 6.55 gallon vessel

Specification Sheet

- BL506

Model	kW	Btu/h	Amps	Voltage	Breakers	Max Op Temp
EB-S-13	13.5	46,000	56	240	60, 30	160° F
EB-S-18	18	61,000	75	240	60, 60	160° F
EB-S-23	22.5	80,000	94	240	60, 60, 30	160° F
EB-S-27	27	92,000	113	240	60, 60, 60	160° F
EB-WX-13	13.5	46,000	56	240	60, 30	180° F
EB-WX-18	18	61,000	75	240	60, 60	180° F
EB-WX-23	22.5	80,000	94	240	60, 60, 30	180° F
EB-WX-27	27	92,000	113	240	60, 60, 60	180° F
EB-WX-13-2	13.5	46,000	38	208/3-Phase	50	180° F
EB-WX-27-2	27	92,000	75	208/3-Phase	100	180° F

Model	kW	Btu/h	Amps	Voltage	Breakers	Max Op Temp
EB-CX-18-60	18	61,500	18	600/3-Phase	30	180° F
EB-CX-24-60	24	81,600	23	600/3-Phase	30	180° F
EB-CX-30-60	30	102,000	29	600/3-Phase	45	180° F
EB-CX-36-60	36	123,000	35	600/3-Phase	45	180° F
EB-CX-45-60	45	153,000	44	600/3-Phase	60	180° F
EB-CX-54-60	54*	184,000	52	600/3-Phase	70	180° F
EB-CX-18-48	18	61,500	22	480/3-Phase	30	180° F
EB-CX-36-48	36	123,000	44	480/3-Phase	60	180° F
EB-CX-54-48	54*	184,000	65	480/3-Phase	80	180° F
EB-CX-27-20	27	92,000	75	208/3-Phase	100	180° F
EB-CX-40-20	40.5	138,000	113	208/3-Phase	150	180° F
EB-CX-27-24	27	92,000	65	240/3-Phase	80	180° F
EB-CX-40-24	40.5	138,000	98	240/3-Phase	125	180° F
EB-CX-31	31.5	107,500	131	240/Single Phase	80, 100	180° F
EB-CX-36	36	123,000	150	240/Single Phase	100, 100	180° F
EB-CX-40	40	136,000	167	240/Single Phase	125, 125	180° F
EB-CX-44	44	150,000	183	240/Single Phase	125, 125	180° F

*Need a boiler larger than 54 kW? We have models available up to 300 kW. Visit www.electromn.com for details.

COMMERCIAL SERIES

Dimensions

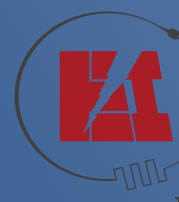
- 20"W x 38"H x 21"D
- 2" NPT
- 230 lbs
- 13.12 gallon vessel

Specification Sheet

- BL508



TO LOCATE A CONTRACTOR OR
DISTRIBUTOR IN YOUR AREA VISIT
WWW.ELECTROMN.COM AND CLICK ON
DEALER FINDER



**ELECTRO
INDUSTRIES**

Monticello, Minnesota
800.922.4138
www.electromn.com