

MARS Oil Burner Motors

Ball Bearing

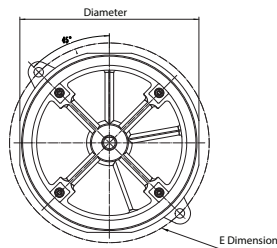
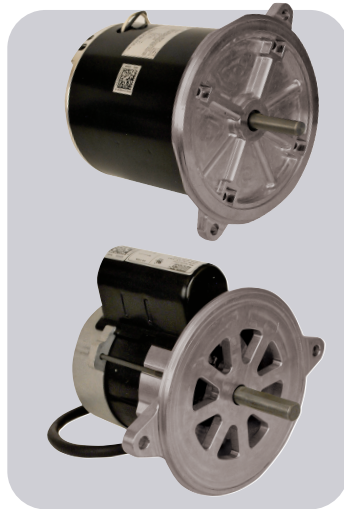
MARS Oil Burner Motors are replacement motors for residential and commercial oil burners, hot water pressure/steam cleaners and other applications where 48M or 48N flange mounting is required.

Features:

- All angle
- Split Phase and PSC
- Semi or totally enclosed
- Two bolt direct mounting for 48M and 48N

Specifications:

- Class "B" insulation
- Single phase, 60 Hz
- Continuous duty
- Manual reset overload protection
- Auto reset protection for PSC
- cULus

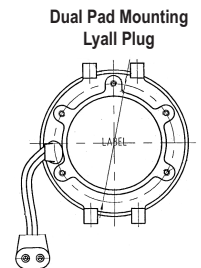
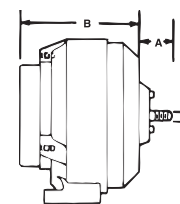


51 Frame Unit Bearing Cast Iron Motors

MARS 51 frame motors are used on refrigerators, freezers, food & beverage coolers, vending machines, display cases, and many other fan duty applications.

Features:

- Cast iron construction
- Packed with vibration dampener, speed nut & screws
- Shaded pole, single phase
- Fan duty, continuous, air over
- Impedance protected
- For accessories see pages M-50 – M-54
- Class "A" insulation
- 60/50 Hertz



Cross Reference:

| MARS No. | AO Smith/Century | Beckett | Emerson/US Motors | Marathon |
|----------|------------------|---------|-------------------|----------|
| 30004 | EL2022 | - | 2302 | O004 |
| 30011 | OI2052D | - | 3267 | O011 |
| 30100 | EL2002 | - | 3083 | O100 |
| 30600 | EL2004V1 | - | 3196 | O600 |
| 30601 | EL2014V1 | - | 3250 | O601 |
| 30701 | - | 21805U | 3274 | O701 |

| MARS NO. | DIA. | HP | RPM/SPD | VOLTS | AMPS | ROT. | FRAME | ENCL. | S.F. | SHAFT LGTH | SHAFT DIA. | E DIM. |
|----------|------|----|---------|-------|------|------|-------|-------|------|------------|------------|--------|
|----------|------|----|---------|-------|------|------|-------|-------|------|------------|------------|--------|

Split Phase

| | | | | | | | | | | | | | |
|-------|-------|-----|--------|-----|-----|-----|-----|---------------|-----|---------|-------|-------|-------|
| 30100 | 5-1/2 | 1/7 | 3450/1 | 115 | 2.4 | Rev | 48M | Semi Enclosed | - | 1.0 | 1-3/4 | 1/2 | 6-3/4 |
| 30600 | 6-1/2 | 1/8 | 1725/1 | 115 | 2.7 | Rev | 48N | TENV | 1.0 | 1-3/4 | 1/2 | 7-1/4 | |
| 30601 | 6-1/2 | 1/6 | 1725/1 | 115 | 2.8 | Rev | 48N | TENV | 1.0 | 1-3/4 | 1/2 | 6-1/2 | |
| 30004 | 6-1/2 | 1/4 | 3450/1 | 115 | 3.8 | Rev | 48N | Semi Enclosed | 1.0 | 1-13/16 | 1/2 | 7-1/4 | |

Oil Burner, PSC

| | | | | | | | | | | | | |
|-------|-------|-----|--------|-------------|---------|--------|-----|---------------|-----|-------|-----|-------|
| 30701 | 5-1/2 | 1/7 | 3450/1 | 115 | 1.5 | CCW SE | - | Semi Enclosed | - | 1-3/4 | 1/2 | 5-1/4 |
| 30011 | 6-1/2 | 1/2 | 3450/1 | 115/208-230 | 8.2/4.1 | Rev | 48N | Semi Enclosed | 1.0 | 1-3/4 | 1/2 | 7-1/4 |

| MARS NO. | WATTS | ROT OSE | VOLTS | AMPS | LEAD LENGTH | DIMENSIONS | | |
|----------|-------|---------|-------|------|-------------|------------|---|---|
| | | | | | | A | B | C |

1000 RPM—1/4-20 Threaded Shaft

| | | | | | | | | |
|----------|-----|----|-----|------|-----|------|------|-----|
| 05111(1) | 2.5 | CW | 115 | 0.30 | 26" | 0.66 | 2.64 | 1/4 |
|----------|-----|----|-----|------|-----|------|------|-----|

1550 RPM—1/4-20 Threaded Shaft - Dual Pad Mounting - Lyall Plug

| | | | | | | | | |
|----------|----|-----|-----|------|-----|------|------|-----|
| 05211(1) | 4 | CW | 115 | 0.33 | 24" | 0.66 | 2.64 | 1/4 |
| 05212(1) | 4 | CCW | 115 | 0.33 | 24" | 0.66 | 2.64 | 1/4 |
| 05221(1) | 4 | CW | 230 | 0.19 | 24" | 0.66 | 2.64 | 1/4 |
| 05222(1) | 4 | CCW | 230 | 0.19 | 24" | 0.66 | 2.64 | 1/4 |
| 05311 | 6 | CW | 115 | 0.46 | 24" | 0.66 | 3.14 | 1/4 |
| 05312 | 6 | CCW | 115 | 0.46 | 24" | 0.66 | 3.14 | 1/4 |
| 05411 | 9 | CW | 115 | 0.62 | 24" | 0.66 | 3.14 | 1/4 |
| 05412 | 9 | CCW | 115 | 0.62 | 24" | 0.66 | 3.14 | 1/4 |
| 05421 | 9 | CW | 230 | 0.33 | 24" | 0.66 | 3.14 | 1/4 |
| 05422 | 9 | CCW | 230 | 0.33 | 24" | 0.66 | 3.14 | 1/4 |
| 05811(2) | 16 | CW | 115 | 0.95 | 24" | 0.66 | 3.34 | 1/4 |
| 05812(2) | 16 | CCW | 115 | 0.95 | 24" | 0.66 | 3.34 | 1/4 |
| 05821(2) | 16 | CW | 230 | 0.48 | 24" | 0.66 | 3.34 | 1/4 |
| 05822(2) | 16 | CCW | 230 | 0.48 | 24" | 0.66 | 3.34 | 1/4 |

1500 RPM—1/4-20 Threaded Shaft

| | | | | | | | | |
|----------|----|----|-----|------|-----|------|------|-----|
| 05711(2) | 35 | CW | 115 | 1.4 | 22" | 0.50 | 3.50 | 1/4 |
| 05721(2) | 35 | CW | 230 | 0.70 | 22" | 0.50 | 3.50 | 1/4 |

1500 RPM—Smooth Shaft

| | | | | | | | | |
|----------|----|----|-----|------|-----|------|------|-----|
| 05511(2) | 50 | CW | 115 | 1.7 | 22" | 1.50 | 4.50 | 3/8 |
| 05521(2) | 50 | CW | 230 | 0.85 | 22" | 1.50 | 4.50 | 3/8 |

(1) Class A Insulation (2) Automatic Reset Overload Protection