



Whole-Home Air Purification System with ACTIVE Particle Control™

Model	ACS - Platinum Series			
Filtration Effectiveness	Utilizes "Active" Particle Control Technology for optimum indoor air quality performance by using a patented process for removing contaminants from the living space.			
Inactivation	99% of viable airborne contaminants are killed by INACTIVATE™ Technology including bacteria, mold spores, virus, and allergens.			
Airflow Capacity	Up to 2000 CFM			
Contaminants Removed:	Large and small airborne particles, viruses, mold, bacteria, TVOCs, pollen, smoke, pet dander, airborne dust odors and will dissolved gases in the living space.			
System Overview				
Nominal dimensions (height x width)	16" x 20"	20" x 20"	16" x 25"	20" x 25"
Unit Weight (lbs.)	20	21	21	22
Enclosure	Aluminum/galvanized steel			
Maximum airflow (CFM)	1200	1400	1400	2000
Initial pressure drop (inches wc.)	(0.14)	(0.13)	(0.14)	(0.13)
Humidity range	0 to 95% RH, Non-condensing			
Operating temperature	-40° to 165°F (-40 to 74°C)			
System depth	6.75" in the airway length direction			
Electrical Requirements				
Power in	120/240 Single Phase VAC			
Consumption	7 Watts @ 120 VAC			
Safety protection	SB 0.5 A/250 V fuses			
Preferred mounting	Return air side			
Safety Certifications	US: UL 867		Canada: CAN/CSA C22.2 No. 187-09	
Warranty	5 year full replacement warranty			
ACS Platinum Part Numbers				
ACS1620PLT	18" h x 20" w x 6.75" d			
ACS2020PLT	22" h x 21" w x 6.75" d			
ACS1625PLT	18" h x 26" w x 6.75" d			
ACS2025PLT	22" h x 26" w x 6.75" d			

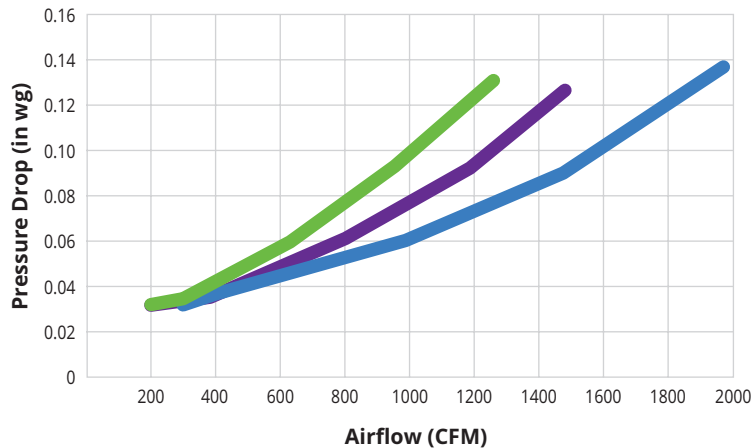
To learn more:

Visit our website at: www.secureaire.com/residential

Please Note:

While every effort has been made to ensure accuracy in this publication, no responsibility can be accepted for errors or omissions. Data may change, as well as legislation, and you are strongly advised to obtain copies of the most recently issued regulations, standards, and guidelines. This publication is not intended to form the basis of a contract.

Platinum Series Pressure Drop Curves



Filter size key:

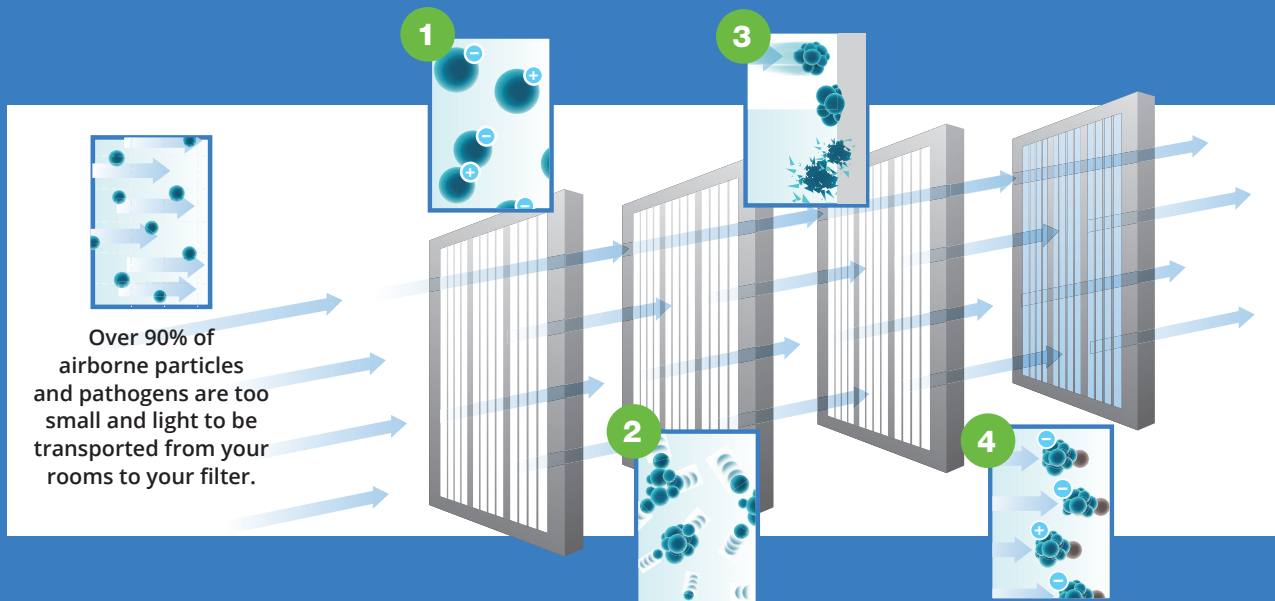
- 16x20
- 20x20/
16x25
- 25x20

Filter Replacement Table*

Nominal Filter Size (in.)	Platinum Series Part Number
16 x 20 x 2	R1620-PLT
20 x 20 x 2	R2020-PLT
16 x 25 x 2	R1625-PLT
20 x 25 x 2	R2025-PLT

ACTIVE Particle Control: How it works

The Advanced and Patented 4-Step process



STEP 1: CONDITION

Particles entering the SecureAir System become electrically **CONDITIONED**.

STEP 2: COLLISION

Thousands of times a second, conditioned particles are forced to **COLLIDE**, gaining weight in the process.

STEP 3: CAPTURE & INACTIVATE

Collisions make particles larger and heavier thus easier to **CAPTURE** within the filter media. Once **CAPTURED**, any viable pathogens will be **INACTIVATED** or killed.

STEP 4: TRANSPORT

The smallest particles not yet **CAPTURED** are again electrically **CONDITIONED** and propelled back into the airspace. There, they attract and attach to other small particles to gain weight, allowing them to be **TRANSPORTED** from the airspace to the SecureAir filter.