

Digital Adjustable Torque Wrench



YELLOW JACKET®



60624

FEATURES & BENEFITS

- Interchangeable heads
- Digital torque value readout
- +/- 2% accuracy
- CW and CCW operation
- Peak hold and track mode selectable
- Buzzer and LED indicator for 9 pre-set target torques
- Four user selectable units of measure (ft. lb., in. lb., N-m, kg-cm)
- 50 data memory for recall and joint torque auditing
- Auto sleep (after about five minutes idle)
- Water contact indicator
- Two AAA batteries included



Captures and Displays Torque Measurement in Real Time Mode to Provide Users with Unprecedented Levels of Control and Accuracy.

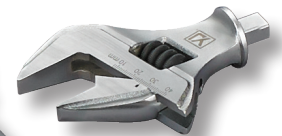
The **YELLOW JACKET® Digital Adjustable Torque Wrench (P/N 60624 and 60648)** has 9 common preset torque values, which display on the digital screen as the flare nut is tightened. For added assurance, indicator lights increase as the torque value is approached. With adjustable wrench heads, you can leave your other wrenches at home. The protective carrying case keeps it safe as you carry it from job site to job site.



60647



60632



60625

SPECIFICATIONS

Digital Adjustable Torque Wrench P/N 60624 & 60648:

Guaranteed Accuracy Range:	12.5 - 62.7 ft. lb. (17 - 85 N-m)
	150 - 752 in. lb. (173 - 867 kg-cm)
Accuracy:	CW: ±2%; CCW: ±3%
Data Memory Size:	50
Pre-Sets:	9
LED Indicators:	6 (1 red, 5 green)
Operation Mode:	Peak hold/track
Unit Selection:	ft. lb., in. lb., N-m, kg-cm
Gear Teeth:	52
Head Open Size:	.2 - 1.18 inches (5 - 30 mm)
Battery Type:	Two AAA (non-rechargeable)
Operating Temperature:	14°F ~ 140°F (-10°C ~ 60°C)
Storage Temperature:	4°F ~ 158°F (-20°C ~ 70°C)
Humidity:	Up to 90% non-condensing
Drop Test:	1 m
Vibration Test:	10 g

P/N	Description
60624	Deluxe Digital Adjustable Torque Wrench (with 3/8" Drive Ratchet Head P/N 60632)
60648	Digital Adjustable Torque Wrench
60632	3/8" Drive Ratchet Head (included in 60624)
60647	Adjustable Wrench Head .20" to 1.18" (5-30 mm)
Optional Accessory	
60625	Adjustable Wrench Head .32" to 1.61" (8-41 mm)

Description	Length	Max Torque	Torque Measuring Range
3/8" Drive Ratchet Head	10.6" 270 mm	62.7 ft. lb. 85 N-m	3.1-62.7 ft. lb. 4.2-85 N-m
Adjustable Wrench .20" to 1.18" (5-30 mm)	12.8" 325 mm	49.0 ft. lb. 66.5 N-m	2.4-49.0 ft. lb. 3.3-66.5 N-m
Adjustable Wrench .32" to 1.61" (8-41 mm)	13.3" 338 mm	47.0 ft. lb. 63.75 N-m	2.3-47 ft. lb. 3.2-64 N-m