



325 COMMERCE DRIVE
 MT VERNON, OH 43050
 800-253-8236

SPECIFICATION DATA SHEET

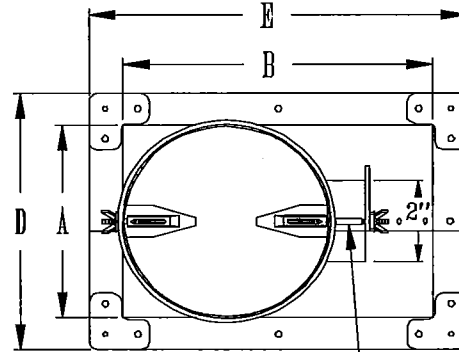
DATE: 7-30-14
 PREPARED BY: RL

MODEL NO. 8240 SIDE TAKEOFF WITH DAMPER

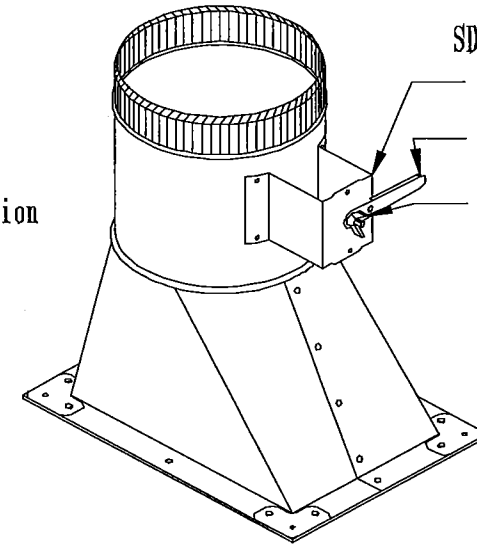
2" ECONOMY STAND-OFF MODEL

DIMENSIONS

SIZE			D	E	F	G	H
4" x 8" x 4"	6"	10"	6"	10"	6"	12"	27°
5" x 9" x 5"	7"	11"	7"	11"	6"	12"	34°
5" x 9" x 6"	7"	11"	7"	11"	6"	12"	27°
5" x 11" x 7"	7"	13"	7"	13"	6"	12"	34°
6" x 12" x 8"	8"	14"	8"	14"	6"	12"	34°
7" x 13" x 9"	9"	15"	9"	15"	6"	12"	34°
8" x 14" x 10"	10"	16"	10"	16"	6"	12"	34°
10" x 16" x 12"	12"	18"	12"	18"	6"	12"	34°
12" x 18" x 14"	14"	20"	14"	20"	6"	12"	34°
14" x 20" x 16"	16"	22"	16"	22"	6"	13 1/4"	36°
16" x 22" x 18"	18"	24"	18"	24"	6"	12"	34°



Shaft Extension



SDK2x2 - Includes:
 Standoff Saddle
 Standoff Handle
 Standoff Wingnut

MATERIAL SPECIFICATIONS

HOT DIPPED GALVANIZED STEEL.
 PER ASTM A 653 CSB.

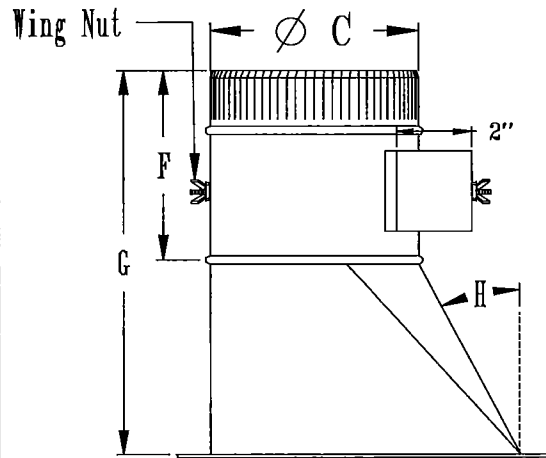
BODY/COLLAR GAUGE: 6"-12" = 26GA
 14"-20" = 24GA

DAMPER GAUGE: 4"-12" = 26GA
 14"-18" = 24GA

ASSEMBLED WITH 1/8" ZINC COATED RIVETS.

WINGNUT: 5/16-18, ZINC PLATED STEEL

GASKET IS CROSSLINKED POLYETHYLENE.



1/8" Thick Gasket

OPTIONS

JOB: _____
 LOCATION: _____
 CONTRACTOR: _____
 ENGINEER: _____
 NOTES: _____