



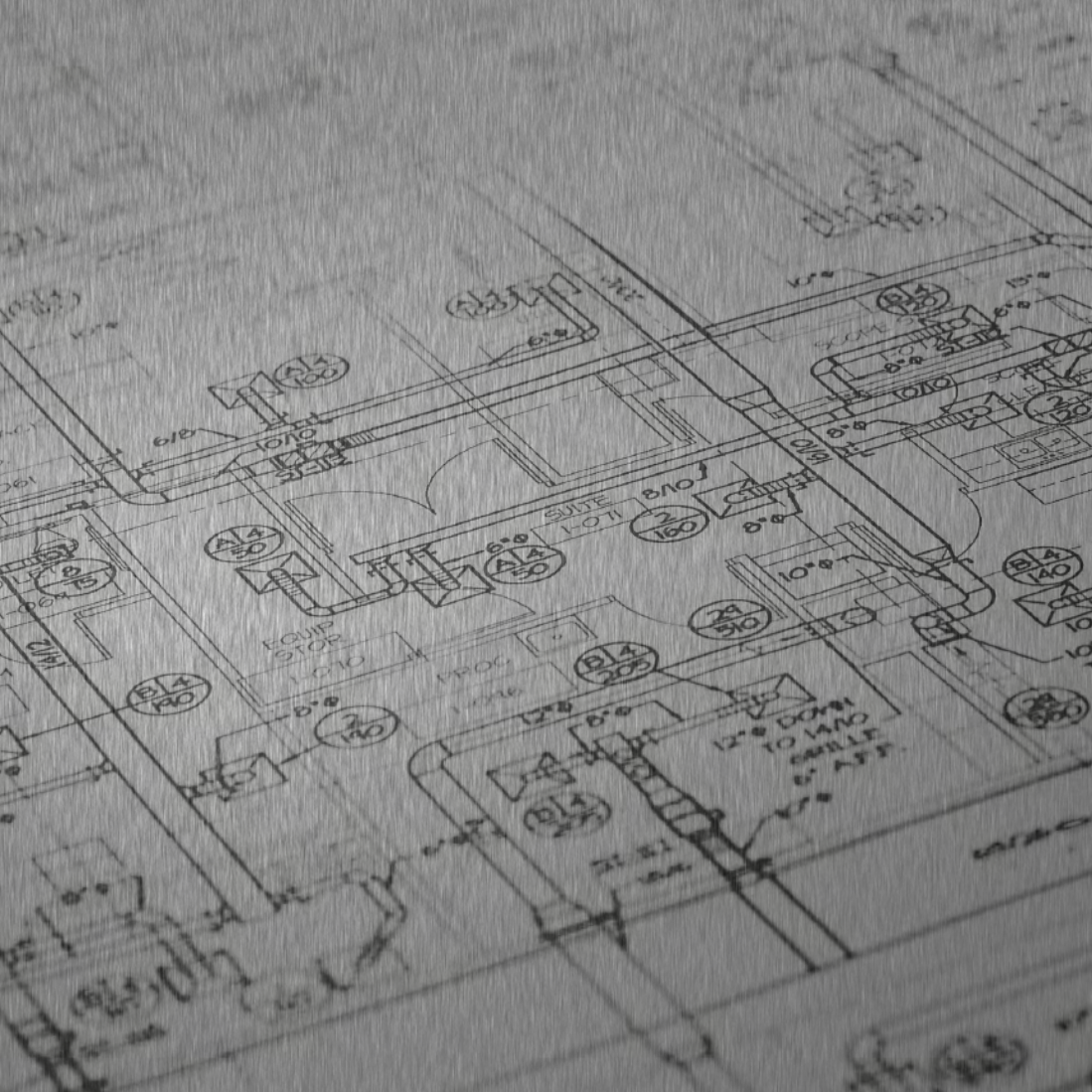
**ENERGY SAVING PRODUCTS**

**AIR CONDITIONING, HEATING, AND REFRIGERATION**

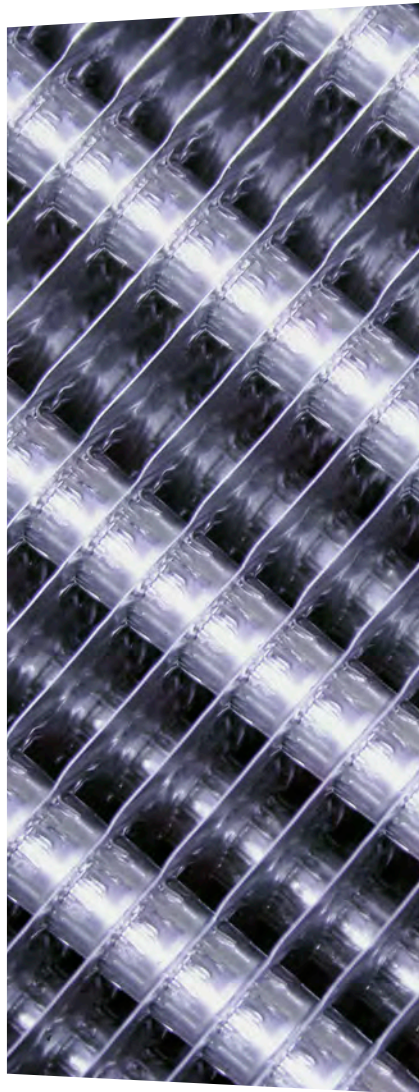
PO Box 391  
Vandalia, OH 45377  
(937) 898-0391  
[www.espcompany.com](http://www.espcompany.com)

**The Consolidator  
V17**

ESP - A supplier and manufacturer with a global reputation for high quality products combining innovative design with meticulous attention to detail.



AC Leaf & Debris Protector.....	33	Ice Scoops.....	10
Air Switches.....	63-65	Light Bulbs.....	42
Anti-Windmill Brake.....	12	Li'L Popper.....	8
Bacchus Cellar Systems.....	Inside Back Cover		
Bottles, Industrial Spray.....	44-45		
Brass Compression Fittings.....	30	Lubricants	
Brushes, Schaefer.....	48-62	PB Blaster.....	5
Bullseye Nozzle.....	35	Grease, Bearing / General / Food Grade.....	4
Calipers.....	15	Mold Test Kit.....	33
Caulking Guns.....	11	Old Switcheroo.....	9
Caulk, Butyl.....	4	Paint, Krylon	
Cement, Wet/Dry Roof.....	5	Epoxy Appliance.....	31
Compression Sprayers		Heresite Touch-up Spray.....	31
Acid Blaster, 2 Gal.....	43	High Heat.....	31
Acid Blaster & Big Shot		Industrial Maintenance.....	31
Replacement Parts.....	43	Rust Preventative.....	31
Tommy Gun, 2 QT.....	43	Pens and Markers.....	30
Tommy Gun Replacement Parts.....	44	Pin Extractor Tool.....	16
Tommy II, 48 oz.....	44	Power Cords	
Core Gripper.....	16	Extension.....	42
Couplings		Pumps	
Raychem.....	22	Acid Pumps.....	6
Easy Levelers.....	14	Beckett/Seabrook Medical Pump.....	6
Expanding Hose.....	45	PVC Drop Cloths.....	10
Fan Blade Pullers.....	12	Pry Bars.....	13
First Aid Kits.....	36	Refrigeration Products	
Flame Gard.....	47	Unit Disposal Labels.....	46
Flowmeters / Heat Pumps / Fluid.....	18	ESP Hose Kit.....	46
Foam, Expanding.....	5	Refractometer.....	37
Four Way Key.....	15	Refrigeration & A/C Book.....	38
Funnels, Chemical Transfer.....	10	Shop Cloths.....	32
Furnace Magnet.....	9	Sight Glass Tool.....	17
Fuses, Bussmann.....	39-40	Silicone	
Fuse Puller, Bussmann.....	40	ESP 8732.....	2
Gasket Book, Finny's.....	28	ESP 8736, Hi-temp.....	2
Gasket Scraper.....	12	ESP AC&R.....	2
Glue		Smoke Testers.....	35
Insulation Adhesives.....	5	Solenoid, Humidifier.....	34
PVC Cement, Primer, Cleaner.....	7-8	Spray Bottles.....	43-45
Grease Gun, Plews.....	11	Stretch Straps.....	13
Glycol Refractometer.....	37	Sure Temp Thermometer.....	33
Hand Cleaners & Towels.....	32	Switches, Air.....	63-66
Heat Blocker, Reusable.....	47	Tank Carriers.....	17
Heat Guns, Torches & Accessories.....	47	Tape, Teflon Thread Seal.....	8
Hose, Garden.....	45	The Little Black Box.....	9
Humidifier Water Pads.....	34	The Old "Switcheroo" / Furnace Magnet.....	9



Thermostat Covers .....	38
Transition terminals .....	41
Tubing Clamps .....	68
Utility Knife .....	13
Unit Disposal Labels .....	46
Vacuum Tester .....	14
Valves	
Combustion Intake Alternate .....	9
Condensate Blow out .....	19
Compressor Pad Valves .....	36
Rotolock Valves .....	23-27
Brass Compression Fittings .....	30
Solenoid .....	18
Teflon O-Ring .....	29
Y-Strainer, Bronze .....	18
Y-Strainer, Plastic .....	18
 KITZ	
Ball / Water .....	20
Gate / Water .....	20
Gas .....	21
UHS Solenoid .....	34
Vibration Absorbers .....	67
Water Pads .....	34
Wilde Gasket Scraper .....	12
Worklights, Safety	
Fluorescent .....	41
6 "N1 Wrench / Sheet Metal Screws .....	13



### 8732 Premium 100% Silicone

8732 Premium 100% silicone has exceptional adhesion and sealing qualities. This product meets USDA, FDA, UL, and NSF and has -40° to +450° F range. For general purpose refrigeration, air conditioning and heating applications. Available in 10.3 oz. cartridges or 3 oz. squeeze tube, individually boxed in clear, white, aluminum, or black

**8732 C,W, A, B 10.3 oz cartridge or 3 oz squeeze tube**



### 8736 Hi-Temp Silicone

8736 Hi-temp silicone is also available, with use range of -85° F to 500° F (intermittent to 600° F), red only

**8736R**



### AC&R

AC&R New low cost 100% silicone has exceptional adhesion and sealing qualities. This product meets USDA, FDA, and has -40° to +450° F range. For general purpose refrigeration, air conditioning and heating applications. Available in 10.3 oz. cartridges in clear, white, aluminum, or black. Order free AC&R display

**ACR C,W, A, or B, 10.3 oz.**





### ESP Butyl Caulk

An inexpensive sealant used as perimeter seal, or capping around windows, doors, masonry or metal to metal applications. Used extensively in refrigerated cases, walk-in cooler doors by the fast food and convenience store market. Available in White only

**757WC**



### Mobil Grease "EP"

Mobil Premium Lubricating Grease is a lithium thickened grease containing oxidation and corrosion inhibitors. It is suitable for lubrication of high speed ball and roller bearings found in motors, saws, spindles, generators, fans, and squirrel cages. Superior water resistance. Meets GM spec 7830695, 998537, and Detroit Diesel Corp. 1Y12 spec. -30° to 350° max exposure. Available in 14.1 oz. tubes

**EP2**



### Mobil Grease XHP222

Mobil Extended High Temp Service is a suitable bearing grease providing water resistance and corrosion protection for industrial, construction and marine service. Available in 14.1 oz. tubes

**XHP222**



### Mobil FM222

Mobil FM222 is specifically designed for use in food process machinery. Excellent lubrication characteristics in oven and freezer applications, with high levels of rust inhibition. Available in 14.1 oz. tubes

**FM222**



### PB Blaster

B'laster PB Penetrating Catalyst is a powerful, concentrated penetrant that frees stubborn rusted or immobilized parts by releasing the surface tension that causes them to stick. PB magnetically creeps up, around and into tight, hard-to-reach cavities, then converts into a high lubricant, loosening troublesome nuts, bolts, rusted joints, pipe threads and other frozen parts in record time! B'laster PB's non-evaporating formula then stays on the surface of the part to protect against rust and corrosion. 16 oz. aerosol

**PB 16**



### Expand-A-Foam

Expand-A-Foam is a one part, multi-purpose filler for holes, joints, and cracks. Excellent for sealing and caulking during equipment installation and construction. Expand-A-Foam is tack-free in 20 minutes, and fully cured within 24 hours. As it expands to three times its exit size, fill only 35% of cavity to be filled. Great to use where regular caulking won't work or is cost prohibitive. UL recognized, contains no CFC, 12 oz. can

**EF12**



### Wet/Dry Roof Cement

A heavy consistency mastic formulated with refined asphalt, filler, plastosizer, and solvent. All-purpose repair cement adheres to damp substrates. Remains soft and pliable through wide temperature fluctuations. Meets all requirements of ASTM D-4586-8-6, asbestos free

**WDRC 10.3 oz. or WDRC 1 Gal**

**ESP Acid Pump**



The ESP compact submersible pump is designed to circulate strong acids and cleaning solutions. All parts are constructed of acid-resistant materials. Motor is protected by thermal overload. Powerful 300 GPH pump

**G325A**

**ESP Beckett/Seabrook Replacement Pump**



This G100AILS replaced the Seabrook medical blanket pump, later used by Cincinnati Sub-Zero. 100 GPH

**G100AILS**

**ESP NEW Replacement Pump**



Drill pump for Glycol/Oil/Any Fluid

**PUP63**

**ESP Self Priming Pump**



Self priming Drill pump Heavy Duty action, Handles very viscous fluids and other dense fluids. 100 GPH, 1" barbed connections. DP70 Handy kit utilizes drill power pump capable of unclogging and removing all unwanted debris in condensate lines. Handy adapters will suction or pressurize lines that are 1/4" flared, 3/4" male or female union, "For walk-in condensate lines" and 1/2" and 3/4" sweat connections for AC lines, can be used in combination with LD10 Line Drive blowout valve. Where other systems only partially open up condensate lines, our system completely removes blockages

**DP70 Self Priming Pump**

**Line Drive Condensate Clean Up Kit**  
the part number is #LD1000

**PVC Clear Glue**



This medium body solvent cement is used to join PVC pipe and fittings for potable water and drain, waste and vent systems. Recommended for PVC Types I and II, schedule 40" to 8" and schedule 80" to 6" diameters. ASTM-D-2564. Available in 1/4 and 1/2 and 1 pint cans with dauber

**PG14, PG12, or PG100**

**ABS, PVC, CPVC All Purpose Glue**



This clear regular bodied cement can be used on ABS, PVC schedule 40 and 80 Type I and Type II, gas pipe, conduit and CPVC schedule 40 up to 4" in diameter. Set time 45 seconds. Available in 1/4, 1/2, and 1 pint containers

**AP14, AP12, or AP100**

**Purple Primer**



Softens and prepares PVC pipe and fittings for gluing . Use for potable water and drain, waste and vent systems. ASTM F656

**PP14 (1/4 pint), PP12 (1/2 pint), PP100 (1 pint) containers, all with dauber**

**Clear Cleaner**



Cleans and prepares PVC, CPVC and ABS fittings for gluing

**PC14 (1/4 pint), PC12 (1/2 pint), PC100 (1 pint)**



### Insulation Adhesive

Used by contractors nationwide as the premier insulation adhesive. Is now specified by a major insulation tubing manufacturer to be used on their products. Color: Amber. Viscosity: 200 - 300 CPS. Odor: solvent when wet / none dry. Bonding range: to 20 minutes. CAUTION: Extremely flammable. Avoid open flame or spark. Apply in well ventilated area

CC12 (1/2 pint), or CC100 (1 pint)



### ESP Teflon Thread Seal Tape

Teflon thread seal tape offered in both .0035 and .0032 thick tape manufactured by Dupont. Both meet MILT-27730A specs, are recognized by NSF and are approved by NASA. .0035 Tape is UL approved. Available in 260" and 520"

TT260 or TT520 for 1/2", .0032 mil and .70 density. Packed 100/box or 10/sleeve

TTUL260 or TTUL520 for 1/2", .0035 mil, .90 density. Both packed 144/box

## TOOLS

### Li'L POPPER



Li' L Popper control circuit breaker saves the technician dozens of blown fuses while he diagnoses control circuit failures. Simply plug the leads in to the ATC fuse receptacle on the board, and manually reset the Li' L Popper each time the breaker blows. Has a quick setting thermal cut out. Self adhering backing allows the contractor to leave the unit on the job site overnight if he is out of fuses. Free counter display by request. Available in 3 amp, 5 amp, 10 amp, 15 amp, and 20 amp. Alligator clip versions are available

POP3, POP5 for residential or commercial amp applications or, POP10, POP15, POP20 for microwave and appliance applications POP3Z, POP5Z for Alligator clip versions



### The Little Black Box

#### DETAILS

- Provides 24v power to check systems
- Designed for the lab, available to the contractor
- Perfect for parts counter control checking
- Professional 40" silicone test leads with point probes, and interchangeable alligator clip extensions
- 24v manual reset overload protection
- Lighted 120v power switch
- High strength magnetic backing grips metal surfaces
- One Year Warranty

VP24



### The Old Switcheroo

The Old Switcheroo is a heavy duty industrial magnet designed to hold down pop out switches while the technician trouble shoots the furnace or air handler. Two wings will reach out to switches that are set apart from a flat metal surface. A must in the tool box. Ask for free counter display with tri-folds

FF75



### N-Take 2



This unique device is installed within the draft induction supply line in between the outdoor intake and the furnace. When a blocked intake would normally result in a no heat call, and a shut down furnace, the N-Take 2 opens due to a slight vacuum inside the pipe. Not to be used as a primary combustion inlet. Alternate only

Free Display Pictured Here.

NT02

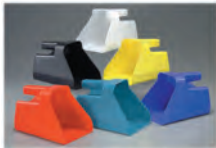




**Ice Scoops**

Old dependable 64 oz. scoop meets FDA standards; contour grip with hanging loop on handle. 14 1/2" long x 5 3/4" wide x 3 1/2" high. White polypropylene only

**PS830**



**Three Quart Scoops**

Available, for ice or dry chemicals. 14 1/2" high x 6" wide x 6" deep polypropylene in White only

**PS621**



**Chemical Transfer Funnels**

Avoid any potential spills of harmful chemicals during transfer. Available in 64 oz. with brass filter screen, Part # 240117, or in a 1 gallon size (with screen)

**240116**

**240116 (1 gal.) or 240117 (64 oz.)**



**PVC Drop Cloths** These 2 mil 12' X 12' pvc drop cloths are perfect for residential or commercial job cleanliness, and cut down on on-the-job damage of computers, furniture, carpet, or other valuables adjacent to the work area. In display box. 12/box

**DC12**



**Caulking Guns**

Durable, high quality, and heavy duty. Made of heavy gauge metal, with positive action plunger rod

**CG101**



**Commercial Grade Skeleton Gun**

Skeleton gun with heavy duty handle, spout cutter, seal punch, and ladder hook. 5/16" Plated rod

**CG102SC**



**Plews Grease Guns**

Meet the toughest grease guns around. The all new grease gun line from Plews. These guns have been completely redesigned and incorporate advanced features that are unmatched in the industry.

Constructed of heavy duty steel and finished in rugged baked enamel and tough zinc plate, every feature of these grease guns has been engineered for the rigors of professional use. Lifetime warranty

**30200**



**Grease Hose**

There are 1/8" NPT male fittings on each end. Meets U.S. Government mil-spec

**10-212 for 12" and 10-219 for 18"**



### Fan Blade and Blower Wheel Tools

Fan blade and blower puller tool by E.S.P. offers a simple and easy solution to locked fan blades and blower wheels. Will not damage blower or blade, so the unit quickly pays for itself

**FB42**



### Wilde Gasket Scraper

Heavy-duty 11" industrial gasket scraper for quick and easy removal with a one inch face and 1 1/2" face

**GS-516 1" Face**  
**GS-516 Wide 1 1/2" face**

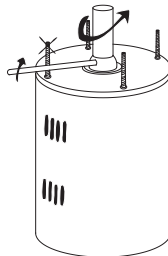


### Anti-Windmill Brake

This patented device slips over the motor shaft and will prevent the motor from rotating in the opposite direction due to windage. Most motors will start and continue to run in the opposite direction if the reverse rotation is severe enough, causing premature motor failure. Fits shaft sizes 1/2" and 5/8"

**AW12 or AW58**

- Wrong rotation will cause the rod to strike thru-bolt, which will stop the shaft from turning
- Shaft will rotate the correct direction freely
- NOTE: This device will stop windmilling in the wrong rotation only



### 6 'N 1 Lug Wrench



- Offers both hexagon and square sockets
- Four nut drives sized 1/4", 5/16", 11/32", 3/8"
- Two squares sized 3/16" and 1/4"
- Use as a handle for 1/4" extension drives
- Fits MC and B acetylene tanks
- Fits service valves
- High-quality vanadium tool steel
- Easy grip round handle
- Pocket sized
- Lightweight and compact
- All drives will accept long screws
- Individually bagged with card & hanging tab

**LW601**



### ESP Utility Knife

Sturdy construction, heavy-duty, low price

**UK10**



### ESP Rubber Stretch Straps

The specially compounded rubber resists sun and weather to last indefinitely. Tensile strength to 50 pounds. Made In the USA Available in 10", 15", 21", and 31"

**RS10, RS15, RS21, or RS31**



### ESP Dominator Pry Bars

These pry bars separate themselves from the competition by their integrated hardened carbon steel core which runs the entire length of the tool. The end is capped to cushion hammer impact and they carry limited lifetime warranties. Available in 13", 31"

**PRY13, PRY31**





**VAC-U-ATOR Vacuum Tester**

For large tonnage refrigeration applications, the VAC-U-ATOR is a wet bulb indicator used to check the vacuum level in an AC&R system. This Pyrex glass tube is protected by an outer Lexan enclosure. When filled with 4 oz. of VAC-O-HOL™ (included) will accurately measure below 1 millimeter HG

**VC10**  
**VAC-O-HOL also sold separately V-HOL4**

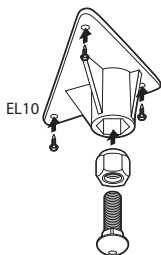
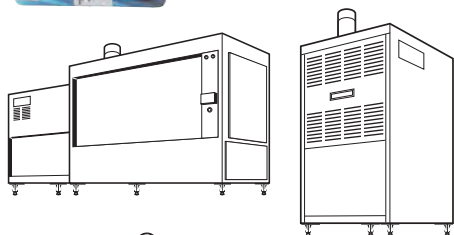


**Easy Levelers**

Revolutionary furnace leveling system created for the perfectionist. Four sturdy bolt-adjusted leg extensions supplied with mounting materials. Simply turn the lag bolted insert clockwise or counter clockwise to raise or lower each corner of the furnace

Free display, holds eight parts

**EL10**



**Pocket Caliper**

Stainless steel 3" caliper, 1/32" and millimeters, inside, outside graduations

**132ME**



**Utility Vernier Caliper**

0-5" range, mm and 16th graduations

**722**  
**For 0-4" Stainless order 729**



**Four Way Key**

Fits stopcocks, sillcocks, and valves. Sizes are 1/4" to 9/32" and 5/16" to 11/32"  
 Precision machined plated steel

**FW1701**



**TXV Power Head Element Wrench**

This handy wrench fits most Sporlan and Alco power head elements for easy removal and replacement

**PH10**

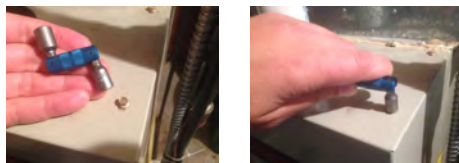




**Z-Tool**

This handy dual nut driver has 1/4" and 5/16" pivoting sockets to reach the most difficult angles, and tightest screw locations

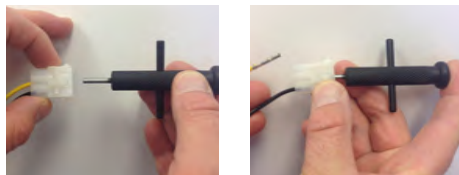
ZT10



**Pin Extractor Tool**

This handy tool will help to pop out Molex and Amp Electrical pins in igniter and other connectors

PE44



**Core Gripper**

Just push in the base to extend four gripper fingers and the spring release grabs the core so that it can be turned out and removed

CGR10



**Sight Glass Tool**

The ESP sight glass tool slides easily into the notches of a scroll compressor sight glass, and easily helps to extract the sight glass with a crescent or socket wrench. 1" diameter

SGRT



**Rhino Tank and Compressor Tote**

The Rhino tank and compressor tote allows the user to easily pick up nitrogen, CO2, and oxygen 20 and 40 lb cylinders, along with all hermetic compressors with lift tabs

6/box

RH10





### ESP Flowmeters

Ground water-sourced, heat pump applications. This high quality polycarbonate bodied flowmeter has 3/4" MPT nylon threaded connections and 1-10 GPM capacity

**LDF357N- 3/4" MPT 2-10 GPM**

**LDF359N-3/4" MPT 2-18**

**C-IK55-A020 King Glass/Brass Liebert Replacement 1" MPT**



### Pro-Line 1" NPT-Solenoid Valve

Normally closed 24V or 115V slow closing 150 psi solenoid valve for use on ground water source heat pumps. Maximum operating temperature 110°F

**HP215 or HP510-115**



### ESP BronzeY-Strainers

Used primarily for all water applications. Working pressure: 300psi W.O.G.; 150psi W.S.P. 80 Mesh screen, 1/4" thru 3/4" sizes

**BY12, BY34**



### ESP Plastic Y-Strainers

Used extensively in the ice machine and water cooler industries. Size 3/8" Manitowoc part #136067-9; Scotsman part # 16-0162-00

**PY38**



### Line Drive

This 3/4" x 3/4" slip on condensate pan blow out valve is a patented one of a kind item. No more buying little cartridges and trying to find the end of drain lines in the dark. Simply install this unit exiting the evaporator in your residential or commercial AC system, and hook up a 1/4" charging hose to the valve and the other end to your CO2 or Nitrogen tank. Turn the valve one way, and blow out the line. Turn it the other way, and remove any blockage inside the coil

**LD10 (8 per box)**



# KITZ

## Class 125 Brass Gate Valve

Code No.07 (Fig. AKFS)



Forged Brass Gate Valves have screwed-in-bonnet, non-rising stem, solid wedge disc, integral seat, NPT threaded or solder joint ends  
 \*\* high tensile strength. Non-rising stem permits installation where head space is limited

Dimensions	inch					
Size	3/8	1/2	3/4	1	1-1/4	
L (IPS)	1.50	1.65	1.85	1.97	2.36	
L (C x C)	—	1.77	2.36	2.76	3.03	
H	2.95	2.95	3.39	3.82	4.61	
D	1.97	1.97	2.17	2.36	2.76	

Code No.08 (Fig. CFS)



07-038, 07-012, 07-034, 07-100, 07-114

KITZ Code No. 07/08



# KITZ

## 600 WOG "Full Port" Brass Ball Valves

Code No.58 (Fig. AKZA)



Full Port Brass Ball Valves are two-piece construction with a chrome plated brass ball, blowout-proof stem, PTFE seats and double 'O' ring stem seal. Quick quarter-turn for easy operation. For use in plumbing and light industry applications. Standard NPT end connection

Working Pressure	Test Pressure					
	Shell .....900 psi. hydrostatic					
600 psi W.O.G.	Seat .....80 psi. air					
150 psi A 300° F						

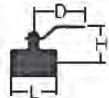
Dimensions	inch					
Size	1/4	3/8	1/2	3/4	1	1-1/4
Bore	0.39	0.39	0.59	0.79	0.98	1.26
L (IPS)	1.57	1.61	1.93	2.20	2.56	2.99
L (C x C)	1.73	1.81	2.13	2.87	3.47	3.94
H	1.42	1.42	1.54	1.73	1.93	2.17
D	3.15	3.15	3.15	5.12	5.12	5.12

Code No.59 (Fig. CZA)



58-014, 58-038, 58-012, 58-034, 58-100, 58-114

KITZ Code No. 58/59



# KITZ

## Class 150 Y-Pattern Strainer

Code No.15 (Fig. AKYU)



Y-Pattern Strainers provide protection for equipment having internal moving parts. Has blow-out outlet for easy clean-out, threaded cap for easy removal. Bronze body and Type 304 stainless steel screen. NPT threaded ends or solder joint ends

Working Pressure	Test Pressure
300 psi. W.O.G. non-shock	Shell .....450 psi. hydrostatic
150 psi. W.S.P. saturated	

Dimensions	inch					
Size	1/4	3/8	1/2	3/4	1	1-1/4
L (IPS)	2.76	2.76	3.15	3.94	4.53	5.31
L (C x C)	—	—	3.15	4.13	4.92	5.71
H	1.73	1.73	1.93	2.28	2.80	3.19
Drain Port	1/4	1/4	1/4	1/4	1/2	1/2
A	1.41	1.41	1.57	1.96	2.52	2.95
B	0.59	0.59	0.70	0.90	1.14	1.42

Code No.16 (Fig. CYU)



15-014, 15-038, 15-012, 15-034, 15-100, 15-114

KITZ Code No. 15/16

## Gas Ball Valve — Design Certified Features:

- Manual operated gas shut-off valves for appliances, appliance connector valves and hose end valves. The following agencies have certified these valves: AGA, CGA, ANSI, and ASME
- Forged Body Construction for Greater Strength
- Blowout-Proof Stem Design
- High Cycle Life PTFE Seats and NBR Seal
- Quarter Turn Open/Close Operation
- Positive Shutoff with Zero Leakage
- Rated for temperatures from -20° F to 125° F at pressures from 1/2 – 125 psi.

Code No.60 (Fig. NO. AKGZH)  
Threaded Ends



SPECIFICATIONS:  
Certified to AGA, CGA, ANSI and ASME

Wing Operator - KITZ Code # 60 (AKGZH)  
Square Operator - KITZ Code # 60 SQ (AKGZHSQ)

60-012 or 60-034



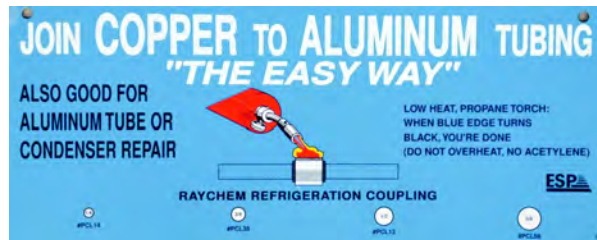
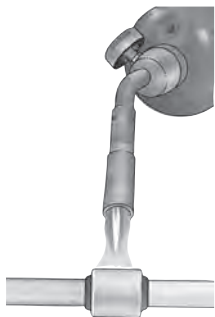
### Raychem Aluminum to Copper Refrigerant Coupling

Perfect solution for problem joints. Raychem tube couplings, with their unique construction, make fast work of difficult tubing joints. When heated with a propane torch, this one-piece coupling shrinks to join and seal refrigerant tubing. Unlike traditional joining methods such as welding and brazing, where joint quality depends on preparation and technique, Raychem couplings create strong, reliable joints time after time. Joining copper or aluminum in hard-to-reach places. Trouble-free reliability. One-piece construction eliminates the problem of parts that vibrate loose after assembly. And Raychem tube couplings are stronger than the tubes they connect. They withstand pressures up to the burst pressure of the tubing, pullout forces in excess of the typical yield strength of the tubing, and vibration fatigue up to the failure of the tubing.

Easy to install. The only tool required is a propane torch. No flux, no solder, no wrenches are needed. Merely slip the coupling over the tube ends, and heat. A colored band at either end changes color to signal when the installation is complete. (This takes approximately 20 seconds for a 3/8" coupling.) And, because there is no residue, there is no need to flush the tubing. Now it is fast and easy to make these permanent, reliable joints even in hard-to-reach places

Blister carded. Available in 1/4", 3/8", 1/2", and 5/8"

**PCL 1/4, PCL 3/8, PCL 1/2, and PCL 5/8**  
**PCL RAYCHEM DISPLAY, N/C.**



"FREE DISPLAY"



### Compressor Valve Cross Reference

Can Replace Copeland Kit #s	Description	When Required		
		Gaskets	Bolts	O-Rings
<b>Horizontal Rotolocks Dual Port</b>				
998-0510-42	3/8"mfl x 1" - 14 rotolock			TR100
998-0510-40	1/2"mfl x 1" - 14 rotolock			TR100
998-0510-41	5/8"mfl x 1" - 14 rotolock			TR100
998-0510-43	3/8"od x 1" - 14 rotolock			TR100
998-0510-44	1/2"od x 1" - 14 rotolock			TR100
998-0510-45	5/8"od x 1" - 14 rotolock			TR100
998-0510-46	1 3/8"od x 1 3/4" - 12 rotolock			TR134
<b>Straight Adapters</b>				
998-0034-18	1/2"od x 1" - 14 rotolock			TR100
998-0034-03	1 1/8"od x 1 3/4" - 12 rotolock			TR134
998-0034-01	3/4"od x 1 1/4" - 12 rotolock			TR114
998-0034-08	7/8"od x 1 1/4" - 12 rotolock			TR114
998-0034-09	1 1/8"od x 1 3/4" - 12 rotolock			TR134
998-0034-13	1 3/8"od x 1 3/4" - 12 rotolock			
<b>Pad Valves 1 5/8" Bolt Centers</b>				
998-0510-27	1/4"od left connection	G020-0012-00	BT100	
998-0510-34	1/2"od left connection	G020-0012-00	BT100	
998-0510-26	3/8"od left connection	G020-0012-00	BT100	
998-0510-24	1/2"fl right connection	G020-0012-00	BT100	
998-0510-22	1/2"fl left connection	G020-0012-00	BT100	
998-0510-25	5/8"fl right connection	G020-0012-00	BT100	
998-0510-23	5/8"fl left connection	G020-0012-00	BT100	
<b>Rotolock Pad Adapter</b>				
998-0036-00		G020-0012-09	BT134	



PAD VALVES					
ESP Part Number	Can Replace Copeland Part Number	Tube Connection	Port Location	Gasket	Bolt
PV012FLD	998-0510-16	1/2" flare	dual	G020-0012-10	BT100
PV058FLD	998-0510-17	5/8" flare	dual	G020-0012-10	BT100
PV012FLRH	998-0510-22	1/2" flare	right	G020-0012-10	BT100
PV058FLRH	998-0510-23	5/8" flare	right	G020-0012-10	BT100
PV012FLHL	998-0510-24	1/2" flare	left	G020-0012-10	BT100
PV058FLHL	998-0510-25	5/8" flare	left	G020-0012-10	BT100
PV038FLRH	998-0510-26	3/8" flare	right	G020-0012-10	BT100
PV014FLRH	998-0510-27	1/4" flare	right	G020-0012-00	BT100
	998-0510-28	5/16" flare	right		
PV038FLHL	998-0510-29	3/8" flare	left	G020-0012-10	BT100
PV058SWLH	998-0510-31	5/8" sweat	left	G020-0012-10	BT100
PV038SWLH	998-0510-35	3/8" sweat	left	G020-0012-10	BT100
PV038SWRH	998-0510-36	3/8" sweat	right	G020-0012-10	BT100
ROTOLOCK VALVES					
ESP Part Number	Can Replace Copeland Part Number	Tube Connection	RotoLock Fitting	O-Ring	
H078OD134D	998-0510-37	7/8" sweat	1 3/4"-12	TR134	
H034OD114D	998-0510-38	3/4" sweat	1 1/4"-12	TR114	
H012FL100D	998-0510-40	1/2" flare	1"-14	TR100	
H058FL100D	998-0510-41	5/8" flare	1"-14	TR100	
H038FL100D	998-0510-42	3/8" flare	1"-14	TR100	
H012OD100D	998-0510-44	1/2" sweat	1"-14	TR100	
H058OD114D	998-0510-45	5/8" sweat	1"-14	TR100	
H138OD134D	998-0510-46	1 3/8" sweat	1 3/4"-12	TR134	
H118OD114D	998-0510-47	1 1/8" sweat	1 1/4"-12	TR114	
H078OD114D	998-0510-48	7/8" sweat	1 1/4"-12	TR114	
V078OD114D	998-0510-49	7/8" sweat	1 1/4"-12 vertical	TR114	
H118OD134D	998-0510-02	1 1/8" sweat	1 3/4"-12	TR134	
H118OD114D	998-0510-51	1 1/8" sweat	1 1/4"-12	TR114	
H078OD100D	998-0510-52	7/8" sweat	1"-14	TR100	
	998-0510-55	1/2" flare	1"-14	TR100	
	998-0510-56	5/8" flare	1"-14 left	TR100	
V058FL100D	998-0510-57	5/8" flare	1"-14 vertical	TR100	
V038FL100D	998-0510-58	3/8" flare	1"-14 vertical	TR100	
V012FL100D	998-0510-59	1/2" flare	1"-14 vertical	TR100	
H158OD134D	998-0510-66	1 5/8" sweat	1 3/4"-12	TR134	
H158OD214D	998-0510-68	1 5/8" sweat	2 1/4"-12 roto	**	
	998-0510-90	7/8" sweat	1 1/4"-12	TR114	
	replaces 510-0133-11				
H118OD114D	998-0510-99	1 1/8" ID,	1 1/4"-12	TR114	
	998-5100-3/8	2 valves			
H158OD214D		1 5/8" sweat	2 1/4" roto	**	
H138OD134D		1 3/8" sweat	1 3/4"-12	TR134	
ADAPTERS					
ESP Part Number	Can Replace Copeland Part Number	Tube Connection	RotoLock Fitting	O-Ring	Standard Part Number
A058OD100	998-0034-16	5/8" sweat	1"-14 female	TR100	
A012OD100M	998-0034-15	1/2" sweat	1"-14 male	TR100	
A138OD134	998-0034-13	1 3/8" sweat	1 3/4"-12 female	TR134	SA11
A158OD214	998-0034-12	1 5/8" sweat	2 1/4"-12 female	**	
A138OD214	998-0034-11	1 3/8" sweat	2 1/4"-12 female	**	
A118OD134	998-0034-10	1 1/8" sweat	1 3/4"-12 female	TR134	
A078OD114M	998-0034-02	7/8" sweat	1 1/4"-12 male	TR114	
A158OD214M	998-0034-06	1 5/8" sweat	2 1/4"-12 male	**	
A034OD114M	998-0034-07	3/4" sweat	1 1/4"-12 male	TR114	
A078OD114	998-0034-08	7/8" sweat	1 1/4"-12 female	TR114	SA07
A118OD114	998-0034-09	1 1/8" sweat	1 1/4"-12 female	TR114	SA09



HORIZONTAL ROTOLOCK VALVES STEEL TOP PORT		
PART #	TUBE CONNECTION SIZE	ROTOLOCK CONNECTION
H038FL034T	3/8" MFL	3/4"-16
H012FL034T	1/2" MFL	3/4"-16
H012FL100T	1/2" MFL	1"-14
H058FL100T	5/8" MFL	1"-14
H038OD034T	3/8" OD	3/4"-16
H012OD100T	1/2" OD	1"-14
H058OD100T	5/8" OD	1"-14
H034OD114T	3/4" OD	1 1/4"-12
H078OD114T	7/8" OD	1 1/4"-12
H118OD114T	1 1/8" OD	1 1/4"-12
H118OD134T	1 1/8" OD	1 3/4"-12
H138OD134T	1 3/8" OD	1 3/4"-12
VERTICAL ROTOLOCK VALVES STEEL TOP PORT		
PART #	TUBE CONNECTION SIZE	ROTOLOCK CONNECTION
V038OD034T	3/8" OD	3/4"-16
V012OD100T	1/2" OD	1"-14
V058OD100T	5/8" OD	1"-14
V078OD114T	7/8" OD	1 1/4"-12
V118OD114T	1 1/8" OD	1 1/4"-12
V138OD134T	1 3/8" OD	1 3/4"-12
HORIZONTAL ROTOLOCK VALVES STEEL DUAL PORT		
PART #	TUBE CONNECTION SIZE	ROTOLOCK CONNECTION
H038FL100D	3/8" MFL	1"-14
H012FL034D	1/2" MFL	3/4"-16
H012FL100D	1/2" MFL	1"-14
H058FL100D	5/8" MFL	1"-14
H038OD100D	3/8" OD	1"-14
H012OD100D	1/2" OD	1"-14
H058OD100D	5/8" OD	1"-14
H058OD114D	5/8" OD	1 1/4"-12
H034OD114D	3/4" OD	1 1/4"-12
H078OD114D	7/8" OD	1 1/4"-12
H078OD134D	7/8" OD	1 3/4"-12
H118OD114D	1 1/8" OD	1 1/4"-12
H118OD134D	1 1/8" OD	1 3/4"-12
H138OD134D	1 3/8" OD	1 3/4"-12

These steel or brass, horizontal and vertical valves as available in the following configurations. The addition of a teflon o-ring completes the kit. See cross reference at the beginning of this section on page # 23



VERTICAL ROTOLOCK VALVES STEEL DUAL POR		
PART#	TUBE CONNECTION SIZE	ROTOLOCK CONNECTION
V038OD034D	3/8" OD	3/4"-16
V012OD100D	1/2" OD	1"-14
V058OD100D	5/8" OD	1"-14
V078OD114D	7/8" OD	1 1/4"-12
V118OD114D	1 1/8" OD	1 1/4"-12

HORIZONTAL ROTOLOCK VALVES BRASS TOP PORT		
PART#	TUBE CONNECTION SIZE	ROTOLOCK CONNECTION
BH038FL034T	3/8" MFL	3/4"-16
BH012FL034T	1/2" MFL	3/4"-16
BH012FL100T	1/2" MFL	1"-14
BH058FL100T	5/8" MFL	1"-14
BH038OD034T	3/8" OD	3/4"-16
BH012OD100T	1/2" OD	1"-14
BH058OD100T	5/8" OD	1"-14
BH034OD114T	3/4" OD	1 1/4"-12
BH078OD114T	7/8" OD	1 1/4"-12
BH118OD114T	1 1/8" OD	1 1/4"-12
BH118OD134T	1 1/8" OD	1 3/4"-12
BH138OD134T	1 3/8" OD	1 3/4"-12

VERTICAL ROTOLOCK VALVES BRASS TOP PORT		
PART#	TUBE CONNECTION SIZE	ROTOLOCK CONNECTION
BV038OD034T	3/8" OD	3/4"-16
BV012OD100T	1/2" OD	1"-14
BV058OD100T	5/8" OD	1"-14
BV078OD114T	7/8" OD	1 1/4"-12
BV118OD112T	1 1/8" OD	1 1/4"-12

STRAIGHT ADAPTERS STEEL		
PART#	TUBE CONNECTION SIZE	ROTOLOCK CONNECTION
A038OD100	3/8" OD	1"-14
A012OD100	1/2" OD	1"-14
A058OD100	5/8" OD	1"-14
A034OD114	3/4" OD	1 1/4"-12
A078OD114	7/8" OD	1 1/4"-12
A078OD114M	7/8" OD	1 1/4"-12 male
A118OD114	1 1/8" OD	1 1/4"-12
A118OD134	1 1/8" OD	1 3/4"-12
A118OD134M	1 1/2" OD	1 3/4"-12 male
A138OD134	1 3/8" OD	1 3/4"-12
A158OD134	1 5/8" OD	1 3/4"-12
A158OD134M	1 5/8" OD	1 3/4"-12 male

ANGLE ADAPTERS STEEL		
PART#	TUBE CONNECTION SIZE	ROTOLOCK CONNECTION
AA038OD100	3/8" OD	1"-14
AA012OD100	1/2" OD	1"-14
AA058OD100	5/8" OD	1"-14
AA034OD114	3/4" OD	1 1/4"-12
AA078OD114	7/8" OD	1 1/4"-12
AA118OD114	1 1/8" OD	1 1/4"-12
AA118OD134	1 1/8" OD	1 3/4"-12



Pad valves with sweat connections come with plastic cap, are tin plated with protected plastic caps



Pad valves are stocked sweat and flare connections

PAD VALVES SWEAT CONNECTION		
PART #	END CONNECTION	ACCESS PORT TYPE
PV014SWRH	1/4" Sweat	Right
PV014SWLH	1/4" Sweat	Left
PV038SWRH	3/8" Sweat	Right
PV038SWLH	3/8" Sweat	Left
PV012SWRH	1/2" Sweat	Right
PV012SWLH	1/2" Sweat	Left
PV058SWRH	5/8" Sweat	Right
PV058SWLH	5/8" Sweat	Left

PAD VALVES FLARE CONNECTION		
PART #	END CONNECTION	ACCESS PORT TYPE
PV014FLRH	1/4" Flare	Right
PV014FLH	1/4" Flare	Left
PV038FLRH	3/8" Flare	Right
PV038FLH	3/8" Flare	Left
PV012FLRH	1/2" Flare	Right
PV012FLH	1/2" Flare	Left
PV058FLRH	5/8" Flare	Right
PV058FLH	5/8" Flare	Left

PAD VALVE SWEAT CONNECTION DUAL PORT		
PART #	END CONNECTION	ACCESS PORT TYPE
PV014SWD	1/4" Sweat	Dual
PV038SWD	3/8" Sweat	Dual
PV012SWD	1/2" Sweat	Dual
PV058SWD	5/8" Sweat	Dual

PAD VALVES FLARE CONNECTION DUAL PORT		
PART #	END CONNECTION	ACCESS PORT TYPE
PV014FLD	1/4" Flare	Dual
PV038FLD	3/8" Flare	Dual
PV012FLD	1/2" Flare	Dual
PV058FLD	5/8" Flare	Dual



STRAIGHT ADAPTERS BRASS		
PART #	CONNECTION SIZE	ROTOLOCK CONNECTION
BA0380D100	3/8"OD	1"-14
BA0120D100	1/2"OD	1"-14
BA0580D100	5/8"OD	1"-14
BA0340D114	3/4"OD	1 1/4"-12
BA0780D114	7/8"OD	1 1/4"-12
BA0780D114M	7/8"OD	1 1/4"-12 male
BA1180D114	1 1/8"OD	1 1/4"-12
BA1180D134	1 1/8"OD	1 3/4"-12
BA1380D134	1 3/8"OD	1 3/4"-12



ANGLE ADAPTERS BRASS		
PART #	CONNECTION SIZE	ROTOLOCK CONNECTION
BAA0380D100	3/8"OD	1"-14
BAA0120D100	1/2"OD	1"-14
BAA0580D100	5/8"OD	1"-14
BAA0340D114	3/4"OD	1 1/4"-12
BAA0780D114	7/8"OD	1 1/4"-12
BAA1180D114	1 1/8"OD	1 1/4"-12
BAA1180D134	1 1/8"OD	1 3/4"-12
BAA1380D134	1 3/8"OD	1 3/4"-12



Finally, we also carry o-rings, o-ring kits, valve caps & kits, rotolock pad adapters, and gaskets. Plus our gasket book

**Finny's Gasket Book**

This array of 36 different gaskets replaces most common gaskets used today in expansion and solenoid valves and pumps. This fine gasket material Garlock replaces old gaskets on Sporlan, Penn, Alco, Jackes Evans, Parker, Mueller, Hamilton Pax, Henry and Primore for a fraction of the price. Attractive counter pad with all 36 life-size gaskets available

**GB10**



**Rotolock, Pad, and Adapter Accessories**

	DESCRIPTION
TR034-6	TEFLON O-RING for 3/4"-16 Rotolock Connection Valves, (6/pk)
TR100-6	TEFLON O-RING for 1"-14 Rotolock Connection Valves, (6/pk)
TR114-6	TEFLON O-RING for 1 1/4"-12 Rotolock Connection Valves, (6/pk)
TR134-6	TEFLON O-RING for 1 3/4"-12 Rotolock Connection Valves, (6/pk)
TR10-12	TEFLON O-RINGS _ Set of each of all sizes, (12/pk)
RC034-2	3/4" Rotolock cap, plastic (2/pk)
RC100-2	1" Rotolock cap, plastic (2/pk)
RC114-2	1 1/4" Rotolock cap, plastic (2/pk)
RC134-1	1 3/4" Rotolock cap, plastic (1/pk)
PA036-0062-00	Compressor pad adapter, 1 3/4" ML Rotolock 2 3/4" bolt centers and ga
GA020-0012-00	Pad Valve Gasket 1/4" (For Series PV014 Valve)
GA020-0012-10	Pad Valve Gasket 3/8" thru 5/8" (For Series PV038 thru PV058 Valves)
GA020-0012-09	Pad Valve Gasket 3/8" thru 5/8" (For Series PA036 Pad Valve Adapter)
BT100	Pad Valve Bolt (For All Pad Valves)
BT134	Rotolock Pad Adapter Bolt (For PA036 Pad Valve Adapter)
GB10	Finny's Gasket Book





## ESP Brass Compression Fittings

ESP brass compression fittings can be used with copper, aluminum, brass, and plastic tube. Compatible with a wide variety of liquids and gases such as water, air, and fuels. Listed with U.L. for flammable liquid. Manufactured for low and medium pressure tubing connection work where excessive vibration or tube movement is not involved. Not recommended for application using gaseous media

Working pressure ranges:

PSI	Tube OD	Tube Wall (inches)
400	1/8	.030
400	3/16	.030
300	1/4	.030
300	5/16	.032
200	3/8	.032
200	1/2	.035

Available in most configurations from 1/8" thru 5/8". Sleeves, nuts, unions, tees, adapters, elbows and other specials available on request

## Sakura Solid Marker



This solidified paint stick provides the user with a permanent mark in 8 different colors. Unlike most other markers, this one adheres to all of the following products: steel, iron, glass, wood, paper, pvc, rubber, vinyl, leather, cloth, concrete and stone. Although it's called permanent, it can be scraped off or removed with methyl or ethyl alcohol. All colors are pigment based, and will show fluorescence under "black light source". Marker will dry within 5 minutes. Comes in white, black, blue, red, green, orange, yellow, and purple

Order Part # SM-(color)



## Heresite Touch-Up Spray

This VR-554T air dry phenolic heresite spray is the highest quality metal protective coating sold in the U.S. today. Can be used to protect any surface subjected to corrosive atmospheres, 12 oz. Can

VR-554



## Krylon Rust Preventative Undercoat Spray

Used as drain pan protectant and premium rust preventer spray. Thick, black, rubberized. 12 oz. Can

1335

## Krylon Paint

Now offers a full line of Krylon Industrial, Maintenance & Touch Up Spray, High Heat Spray, Primers, Clear Acrylic, and Epoxy Appliance Spray Paints. Six per case, 16 oz. can size, 12 oz. net weight



1301 Crystal Clear 12 oz. 6/cs  
 1324 All Purpose Silicone 12 oz. 6/cs  
 1358 All-Purpose Gray Primer 12 oz. 6/cs  
 1401 Bright Silver 12 oz. 6/cs  
 1501 Glossy White 12 oz. 6/cs  
 1502 Flat White 12 oz. 6/cs  
 1505 High Heat White 12 oz. 6/cs  
 1601 Glossy Black 12 oz. 6/cs  
 1602 Ultra-Flat Black 12 oz. 6/c  
 1605 Dove Gray 12 oz. 6/cs  
 1608 Smoke Gray 12 oz. 6/cs  
 1613 Semi-Flat Black 12 oz. 6/cs  
 1614 High Heat Black 12 oz. 6/cs  
 1631 Automotive Black Lacquer 12 oz. 6/cs

1813 Safety Yellow 12 oz. 6/cs  
 1901 Regal Blue 12 oz. 6/cs  
 1929 Plum 12 oz. 6/cs  
 2001 Hunter Green 12 oz. 6/cs  
 2012 Clover Green 12 oz. 6/cs  
 2013 G.M. Alpine Green 12 oz. 6/cs  
 2015 Teal Green 12 oz. 6/cs  
 2116 Scarlet 12 oz. 6/cs  
 2410 Popsicle Orange 12 oz. 6/cs  
 2414 Mauve 12 oz. 6/cs  
 2504 Desert Beige 12 oz. 6/cs  
 3201 Epoxy Appliance, White 12oz. 6/cs  
 3202 Epoxy Appliance, Almond 12 oz. 6/cs

*Rough Touch*  
**SCRUBS**



**Scrubs-In-A-Bucket**

Scrubs-in-a-bucket provide fast, easy and effective hand cleaning with portability. Pumice performance without gritty residue. Can be used with or without rinse. Removes grease, graphite, and even tar

**SB72. 72 sheets, 10-1/4" x 12-1/4"**

**SCRUBS DISPLAY AVAILABLE AT NO CHARGE  
SB72**



**SB30  
30 sheet, tool-box size**



**ESP Blue-Seamed Wiping Cloths**

Heavy-duty blue seamed industrial cotton for any cleanup job. Available in 5 or 10lb. boxes

**WC05 (5lb.) or WC10 (10lb.)**



**ESP Mold Test Kit**

This kit contains two pretreated petri dishes, and two vials of growth medium for the professional contractor to easily test for the presence of mold or common types of bacteria, in a customer's home. Easy to use directions, for duct testing, or IAQ testing

Includes prepaid envelope for lab analysis. 2 KITS

**MT10**



**The Sure Temp Product Thermometer**

Is the least expensive device manufactured today to show exact product temperature in a case, reach-in or walk-in. The sensing probe itself is immersed in a glycol filled well that reacts to changes in ambient at the same rate as stored product. This assures the technician that he is reading internal product temperature and not surrounding air temperature.

The Sure Temp Thermometer is NSF certified and meets the criteria of Food Service.

Operating: Range is -40 degrees F to +180 degrees F. Dimensions are 1-5/15" X 6-7/8". Each unit comes with a bracket and screw for easy attachment to a rack or a panel. Each 10 unit case ships in an attractive counter display

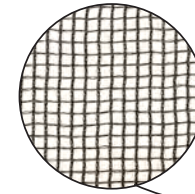
**ST1236-31, (10/cs).**



**AC Leaf & Debris Protector**

This adjustable AC & Leaf Debris Protector, accommodates condensing unit sizes up to 4'x4' and covers all new high Seer residential units. It secures to the unit with heavy-duty elastic bands and makes spring cleaning easy 1/4" x 1/4" openings

**ALDP**

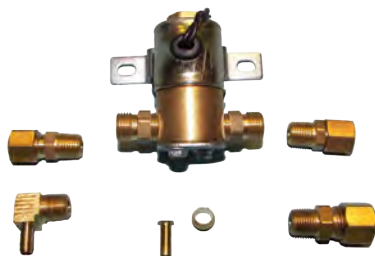




### Universal Solenoid Humidifier

This universal solenoid can replace common units such as Aprilaire #4040, General's #990-53, Honeywell's #32001639-002, and the Skuttle #A01-0814-148 in 24V versions. The UHS will soon become an essential truck stock item. All appropriate fittings are included in the kit with a universal bracket. Flow can easily be reversed by removing two screws, turning the solenoid 180 degrees, and replacing the screws. 110V version is also available

UHS24 or UHS120



### Best Air Pro Water Pads

Best Air is the #1 selling humidifier water pad in the USA. These pads maximize humidity output and out perform all other pads. Our patented drip pattern, and 100% clay covered media is the difference. Replaces Aprilaire, Honeywell, Lasko, Hamilton, and Lennox



710, 712, 714, G13PR



### Best Air Pro White Water Pads

These expanded paper pads with aluminum extrusion backing are the same size as our standard metal & clay pads above, but with 50% more water holding capacity

A10WPR, A12WPR, A35WPR



### ESP Smoke Emitters

Supplied in clean-to-handle cartridges and leave no visible residue. Smoke produced is easy to see and photograph if required. Oil-free smoke eliminates possible damage to decorations or equipment. Sizes are 45, 90, and 150 seconds

SE45, SE90, SE150

4 Minute and 8 minute smoke emitters

SE004 and SE008



### Smoke Check

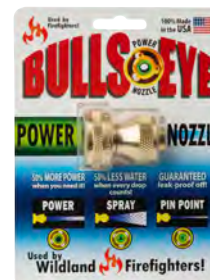


SmokeCheck™, Smoke Detector Tester puts both photoelectric and ionization smoke detectors through their paces to ensure that the circuitry, alarm and power is functioning and that they are actively sampling the air for any hint of a fire. Our patented formulation simulates the entire range of fire conditions giving you the confidence of knowing your fire alarm system will respond promptly to all fire conditions. This product is approved for testing smoke detector function per NFPA 72 par. 8-2.4.1 when used as directed.

Our SmokeCheck™, Smoke Detector Tester does not have HFC or CFC. Our products do not damage the Ozone layer and do not contribute to Global Warming. SmokeCheck™ has always been environmentally friendly. We did not change our products to comply with new codes or protocols. They were originally designed to be environmentally friendly. UL & ULCListed, NFPA 72 Compliant, Safe on sensors

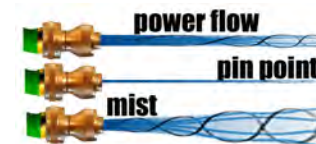
SDT-25

### Bullseye Nozzle



This carded adjustable hose nozzle, sprays a fine stream up to a solid heavy blast of water. Made of brass and stainless steel bearings

810-C





### ESP Industrial First Aid Kit

These 10, 25, 50 or 100 person weatherproof kits include all components listed in chart below

#### Contents:

Description	#10
Adhesive Strips	16
Large Wound Dressing	—
Gauze Pads	4 (3")
Gauze Bandage, 4"	1
Eye Pads	2
Adhesive Tape, 1/2"	1
Triangular Bandage	1
Elastic Bandage	—
Antiseptic Towelettes	10
First Aid Cream Packets	—
Aspirin	10
Eye Flush, 1 oz.	(1)*
Eye Flush, 4 oz.	—
Cold Pack	0
Latex Exam Gloves	2 pr.
Scissors	1
Forceps	1
First Aid Instructions	1

**FA6060 (10 person)**



### Oil Refractometer

This precise instrument is used to determine percentage of mineral oil in a refrigeration system during a POE (polyol ester) changeover. A brix scale, a refractive index, or any list of markings can be used to determine mineral oil percentage. ESP utilizes the brix scale. Copeland recommends a 5% mineral oil level as acceptable. At a 65.9 brix reading (E.S.P. Scale) or below, the residual mineral oil is at that safe level. No need to plot graphs. Easily understandable directions packed with the unit in a foam filled carrying case with oil dropper and calibration screw driver

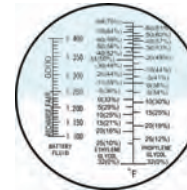


**RHB-82 for POE unit or RHB-82G for our glycol unit  
RHB-82-ND BVA Oil Refractometer**

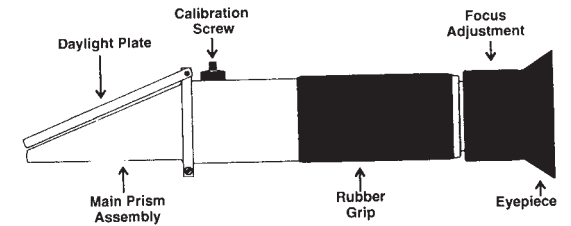


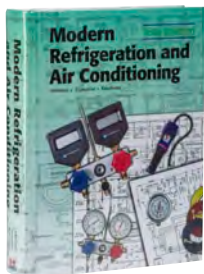
### Glycol Refractometer

This instrument will give "good down to" temperatures for both ethylene and propylene glycol solutions, and an exact percentage of glycol calculation on the scale. Operates just like the oil refractometer in that the operator places a drop or two of solution on the Daylight Plate of the instrument, and then as he looks thru the eyepiece and focuses, a separation on the scale shows an accurate reading



**RHB-82G**





### Modern Refrigeration and Air Conditioning Book, by A.D. Althouse, C.H. Turnquist, and A.F. Bracciano

Modern Refrigeration and Air Conditioning is the leading text in the refrigeration and air conditioning field! It teaches fundamental principles and service techniques. The text tells and shows how to diagnose and remedy HVAC problems. It provides an excellent blend of theory with job-qualifying skills. Fully covers the practical application of refrigeration in all its branches including: domestic, commercial, air conditioning, heat pumps, automotive air conditioning, thermoelectric, solar energy, and special devices. Modern Refrigeration and Air Conditioning provides the foundation on which a solid and thorough knowledge of refrigeration and air conditioning may be based. Students, as well as practicing technicians, will benefit from the topics covered in this book. The current edition includes up-to-date information on refrigerant recovery, recycling, and reclaiming

**Features:**

- Major reorganization of this edition. Large chapters are divided into smaller self-standing modules
- Covers the operations of systems and their specific component
- Progresses from basic to advanced principles using understandable terminology
- Current information on the EPA rules, regulations and guidelines
- Identification of the various types of new refrigerants such as 134a and 123, and information on equipment needed for refrigerant recovery, recycling, and reclaiming
- Up-to-date methods of sizing, installing, and maintaining refrigeration and air conditioning systems
- Proper procedures for using troubleshooting charts
- Emphasis on procedures that will help the service technician become more efficient
- Use of both U.S. and conventional and SI metric units
- Chapters include Module Titles, Key Terms, Objectives, Review of Safety (where applicable), and Test Your Knowledge questions

MR10 for 1150 page text, Part # SG11 for Study Guide



### Stat-Gard® Thermostat Protectors

Uniquely valued for their clean attractive design, competitive price, exceptional performance, and 5 year guarantee against breakage.

Stat-Gard® Thermostat Protectors offer unobstructed airflow design, easy3 step installation, tamper resistant, self-locking (no key required), space age high impact polycarbonate construction, three convenient sizes to cover most thermostats, fifteen attractive styles, mounting screws included. Available with clear or beige cover on clear, black or beige base



1-000 Standard  
3-000 Wide



### Bussmann Fusetron

These dual element, time delay fuses afford the same excellent overload protection of low-peak fuses of motors and other type loads having temporary inrush currents such as caused by transformers and solenoids

FRN-R 250V and FRS-R 600V (2-1/2 - 200 A)

Bussmann low cost FRN-R replacements are also available  
ECNR10-100



### Buss Fustat and Fustron Plug-In Fuses

Available in 1-1/4 thru 60 amp sizes

S & SL (2-30A), SC (1-60A), Part # T & TL (1-1/4-30A)



### Bussmann Limitron

U.L. listed for branch circuit protection, motor control circuits, lighting ballasts, and control transformers. Grooved ferrule permits mounting in rejection type fuseholders as well as standard non-rejection type

KTK-R (600V) (1-30A)



### Bussmann Glass and Specialty Fuses

ESP now makes these glass and specialty Buss fuses available to the diversified wholesaler

ABC 1-30; AGX 1-50; AGC 1/2 - 30; GLQ 3-10; C2 -2-1/2; GMF 1-5; or No. 263-R; MDL 1-30



### Bussmann Fuse Holders

These four Bussmann fuse holders are now available for your HVAC needs

HLR, and HRK



### Bussmann Fuse Pullers

The safest, non-conductive tools used to remove fuse. Always remove power from fuse circuit before removing fuse

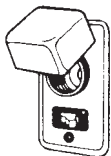
P-2 for 13/32" to 13/16 dia. fuses  
FP-3 for 1" to 1-3/4" dia. fuses



### Bussmann fused outlets, switches and receptacles

Also well stocked in our warehouse

SSU (switch)  
SSY (fused receptacle)



### Bussmann Blade type fuses

For P.C. board applications. Fast acting, 36V, UL recognized 3-40 A

ATC 1 through ATC 40



### Transition Terminals

To be used when control connectors don't match wire connections during replacements

- Transition Terminals from .250 Female to .187 Male, and .187 Female to .250 Male
- 5 Each



TT10

### Fire Fly Cap Light

The Lite, bright, go anywhere light!

The Fire Fly may look like fun, but it puts out a serious light directly from the brim of the users hat. A strong spring action clip makes mounting the Fire Fly to a ball cap, visor, or just about anything, convenient and stable. And with 360 degree swivel action, the Fire Fly can be directed wherever you like.

Whether you're working in a dark attic or inside a control panel in an air conditioning unit or furnace, the Fire Fly delivers the light you need. Fire Fly comes equipped with two CR2032 lithium batteries and is ready to go out of the package. Replacement batteries are easy to find at any drug or hardware store, but we supply them too



FF10  
CR2302 Batteries

### Tool Light FlashLight

This unique tool light slips onto the shaft of any screwdriver, 3/16"-7/16" lights up the work area with three LED. Just turn the grooved edge clockwise to turn on and off. Three magnets on the back will also hold it to the inside of your toolbox, or inside of a control compartment

12 Per display box

TLFL





**ESP Power Cords**

ESP power cords are outdoor heavy capacity electrical cords, 12 or 14 gauge, 25', 50' or 100'

**HC14-25, 50, 100**  
**HC12-25, 50, or 100**



**ESP Power Block**

ESP Power Blocks are heavy duty, 3 outlet electrical cords. Plug three power tools or appliances into one outlet. Available in 12 or 14 gauge, 25', 50', or 100'

**PB14-25, 50, or 100; PB12-25, 50, or 100**

ESP offers a premium quality TPE-rubber cord Power Block for extremely high and sub-zero temperatures. Available in 12 gauge with 2' cord

**PD12-2**



**ESP Light Bulbs**

Light bulbs are now available in Rough Service type: 60W, 75W, 100W

**RS60**  
**RS75**  
**RS100**



**ESP Acid Blaster**

This is the premium two gallon compression sprayer manufactured specifically with the AC&R contractor in mind. This sturdy unit incorporates a patented acid valve and utilizes viton gaskets which are chemical resistant. There are no metal parts that contact liquid. Unit has stainless pump rod and plate. The nozzle has adjustable spray levels. Order part # AB10. Repair kits include all gaskets and seals, part # 6-1925

**AB10 and 6-1925**



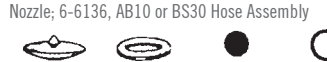
**ESP Big Shot III.**

This three gallon, acid resistant sprayer incorporates viton and polypropylene parts to minimize nuisance breakdowns and leakage. The wide angle, high delivery spray head provides quick application time and makes the coil cleaning job an easier one for your contractors

**BS30**



**6-6136, AB10**  
**or BS30 Hose Assembly**



**6-1925 Gasket Kit**  
**6-7748, AB10 or BS30 Wand**



**6-6003, AB10 or BS30 Nozzle**  
**6-4626, AB10 or BS30 Handle**



**ESP "Tommy Gun"**

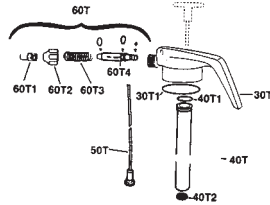
Two quart compression sprayer made out of high pressure impact polyethylene. Equipped with adjustable spray nozzle, the Tommy Gun is lightweight and easy to use

**TG007**



### ESP "Tommy Gun" Replacement Parts

10T - Container only, 20T - Plunger complete, 20T1 - Plunger O-ring, 30T - Pump head only, 30T1 - Container Sealing O-Ring, 40T - Pump barrel, 40T1 - Sealing O-Ring, 40T2 - Non Return Valve, 50T - Dip Tube & Filter, 60T - Nozzle & Spindle Assembly, 60T4 - Nozzle Spindle, 90T - Complete Set of O-Rings and pump Non Return Valve



### Tommy II

48 ounce sprayer in red, poly nozzle

TGII  
3-1802 (Nozzle)



### Triple Shot Foamer

Unique foamer tip produces a large volume of clinging foam. Comfort-grip cushioned trigger delivers 3.5 ML per stroke (3-4 times vs. our general purpose units). 32 oz. clear bottle makes product recognition an easy task

TS32 (12/cs)



### High Delivery Sprayer

High delivery sprayer delivers 3.5 ML per stroke with adjustable nozzle and comfort-grip trigger. 32 oz. clear bottle to ease product recognition

HD32 (12/cs)



### Chem-Sprayer

This chemical resistant sprayer holds up against harsh chemicals and solvents that cause standard trigger sprayers to fail. Adjustable nozzle, o-ring, and piston cup are made of chemical resistant viton. 32 oz. clear bottle to ease product recognition

CR32 (12/cs)



### ESP General Purpose Spray Bottles

Economic design with extra long trigger for comfort. Provides average chemical resistance 24 oz. bottle

IS005 (12/cs)



### Expanding Hose

The new ESP expanding hose is light weight, and made with durable brass fittings (with shut off valve) along with a latex core for long life. This hose takes up very little space, and stores in a neat plastic can. 25 foot, 5/8" diameter without pressure; and expands to 50' when water pressure is allowed to flow. Inexpensive, and great for the technician's crowded truck

XH10

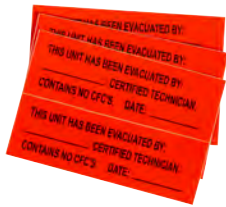


### Premium Braided PVC Garden Hose

- Outstanding wear and weather resistance
- Tire cord reinforced for kink resistance, high burst pressure
- Superior year-round flexibility, coiling ease
- Heavy-duty octagonal female brass couplings
- Hoses are 3/8" or 5/8". Available in 50 ft. length

Z 75850 (3/8") or GH5850 (5/8")

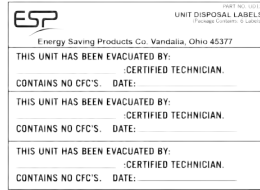




### ESP Unit Disposal Labels

6 labels per packet, Bright orange

UD12



### ESP Hose Assembly Kit

High Pressure Control Hose

This polyamide composite control hose has a outer vinyl wear and UV resistant jacket, with an inner lining compatible with mineral, alkyl benzene, and POE oils. Extremely low hose permeation rate for All refrigerants. Most standard hoses with heavy duty frost proof brass straight and 90 degree fittings. 1000 PSI working, 5500 Burst PSI ratings. 2MM, and 5MM sizes both available in 18" thru 60".

High Pressure Control Hose Kit

This handy control hose kit includes 24' of 2MM hose, with cutter, crimper, and a wide assortment of over fifty straight, and 90 degree fittings. Also has core depressors, copper gaskets, everything a professional technician needs to make his own custom length hoses on site. No more wasted trips to the supply house. Essential to the upper echelon of contractors.



HPHK



### Master Heat Gun

Heavy-duty industrial quality heat gun with temperature and power ratings of 750° F (399°C) and 1680 watts (120V). The airflow rating is 23 CFM at 3,000 FPM. A universal motor, die cast aluminum housing, reinforced mica-insulated ceramic heating element, and externally replaceable carbon brushes make the Master Heat Gun a rugged, reliable source of flameless heat whether you're working with freezer coils, plastic laminates, circuit boards, PVC, fiberglass, or heat-shrinkable materials

HG501A



### ECOHEAT™ Heat Gun

An economical, low cost, entry level, multi-use heat gun. Perfect for industrial and commercial applications.

Features & Benefits:

- Two heat settings 500° and 1000°F, 120V, 10 Amps, 1200 Watts
- Lightweight (1 lb.), easy to hold at any angle for long periods
- Built-in hand guard, protects hands and fingers
- 3-Wire grounded cordset
- UL and CIL listed
- Thermoplastic case, for high impact durability
- Built-in stand

EC-100



### Flame Gard™

This unique non-asbestos flame-gard system protects wood, painted or metal surfaces from the heat and flame of a torch. This 9-1/2" x 12-1/2" pad with aluminum backing can be formed to any application

FG12



### Reusable Heat Blocker

Reusable heat trap in a can. Completely stops heat down ferrous or non-ferrous pipe. Easily molds to any shape. Removes quickly & cleanly after each application. No drip or mess. Good for 100 jobs. 12 oz. Jar

HB34



### Premium Refrigeration Fitting Brushes - 900 Series Stainless Steel Wire

The highest quality fitting brush, double spiral 4-ply wire construction. Solid plastic hand-fitting handle with convenient hole for hanging. Individual package



OD REFRIGERATION SIZES				OD REFRIGERATION SIZES			
PART #	SIZE	PACK	WGT	PART #	SIZE	PACK	WGT
00924-1	1/4"	1	.04	00931-1	1-1/8"	1	.08
00925-1	3/8"	1	.08	00932-1	1-3/8"	1	.08
00926-1	1/2"	1	.08	00933-1	1-1/2"	1	.08
00927-1	5/8"	1	.08	00934-1	1-5/8"	1	.08
00928-1	3/4"	1	.08	00935-1	2-1/8"	1	.08
00929-1	7/8"	1	.08	00936-1	2-3/8"	1	.10
00930-1	1"	1	.08	00937-1	2-5/8"	1	.10

### Premium Plumbing Fitting Brushes - 900 Series Stainless Steel Wire

The highest quality fitting brush, double spiral 4-ply wire construction. Solid plastic hand-fitting handle with convenient hole for hanging. Individual package



OD REFRIGERATION SIZES				OD REFRIGERATION SIZES			
PART #	SIZE	PACK	WGT	PART #	SIZE	PACK	WGT
00943-1	1/8"	1	.04	00949-1	1"	1	.10
00944-1	1/4"	1	.08	00950-1	1-1/4"	1	.10
00945-1	3/8"	1	.08	00951-1	1-1/2"	1	.12
00946-1	1/2"	1	.10	00952-1	2"	1	.12
00947-1	5/8"	1	.10	00953-1	2-1/4"	1	.14
00948-1	3/4"	1	.110	00954-1	2-1/2"	1	.14

#### FITTING BRUSH SIZES & ACTUAL BRUSH DIAMETERS

Fitting brushes are referred to by the size fitting they are designed to clean

PLUMBING ID BRUSH AND FITTING SIZE	REFRIGERATION OD BRUSH AND FITTING SIZE	ACTUAL BRUSH DIAMETER	PLUMBING ID BRUSH AND FITTING SIZE	REFRIGERATION OD BRUSH AND FITTING SIZE	ACTUAL BRUSH DIAMETER
1/8"	1/4"	9/32"	1"	1-1/8"	1-3/16"
1/4"	3/8"	7/16"	1-1/4"	1-3/8"	1-7/16"
3/8"	1/2"	9/16"	1-1/2"	1-5/8"	1-3/4"
1/2"	5/8"	11/16"	2"	2-1/8"	2-1/4"
5/8"	3/4"	13/16"	2-1/4"	2-3/8"	2-1/2"
3/4"	7/8"	15/16"	2-1/2"	2-5/8"	2-3/4"



### 2-IN-1 TOOL

A combination tool that fits your hand comfortably and really works. One end cleans the fitting; the other cleans the tube



PART #	PLBG. ID SIZE	REFRIG. OD SIZE	PACK	WEIGHT
00996-12	1/2"	5/8"	12	1.44
00998-12	3/4"	7/8"	12	1.44
00996-100	1/2"	5/8"	100	12
00998-100	3/4"	7/8"	100	12

### Outside Tube Cleaning Brush

Tough molded plastic holder with comfortable sure grip design and high carbon steel bristles. Packed 6 per box



PART #	PLBG. ID SIZE	REFRIG. OD SIZE	PACK	WGT	PART #	PLBG. ID SIZE	REFRIG. OD SIZE	PACK	WGT
00963-6	1/8"	1/4"	6	.24	00967-6	3/4"	5/8"	6	.48
00964-6	1/4"	3/8"	6	.24	00968-6	7/8"	7/8"	6	.48
00965-6	3/8"	1/2"	6	.24	00969-6	1"	5/8"	6	.48
00966-6	1/2"	5/8"	6	.24	00970-6	1-1/8"	7/8"	6	.48

### Nylon Tube Brush

PART #	DIA.X BRUSH PART	OAL	PACK	WGT	PART #	DIA.X BRUSH PART	OAL	PACK	WGT
14504	1/4" x 2"	6-1/2"	12	.7	14529	3/4" x 3"	9"	12	1.1
14506	1/4" x 2"	15"	12	.7	14530	3/4" x 3"	15"	12	1.3
14509	5/16" x 2"	15"	12	.8	14533	3/4" x 3"	30"	12	3.0
14510	3/8" x 2"	6-1/2"	12	.7	14539	1" x 4"	15"	12	1.5
14512	3/8" x 2"	15"	12	1.1	14547	1-1/4" x 4"	15"	12	1.5
14515	7/16" x 2"	15"	12	1.1	14565	1-1/2" x 4"	15"	12	1.8
14517	1/2" x 3"	9"	12	.9	14567	1-1/2" x 4"	36"	12	3.5
14518	1/2" x 3"	15"	12	1.1	14573	1-3/4" x 4"	15"	12	1.8
14520	1/2" x 3"	30"	12	3.0	14582	2" x 4"	15"	12	2.0
14524	5/8" x 3"	15"	12	1.1	14588	2-1/4" x 4"	36"	12	3.5



### Natural Bristle or Hair

PART #	DIA.X BRUSH PART	OAL	PACK	WGT	PART #	DIA.X BRUSH PART	OAL	PACK	WGT
10209	1/4" x 2"	6-1/2"	12	.8	10212	3/4" x 3"	9"	12	1.1
10210	3/8" x 2"	6-1/2"	12	.8	10214	3/4" x 3"	12"	12	1.2
10220	3/8" x 2"	9"	12	.9	10213	1" x 4"	12"	12	1.3
10211	1/2" x 3"	9"	12	.8	10216	1" x 4"	18"	12	1.8
10221	1/2" x 3"	12"	12	1.1	10217	1-1/4" x 4"	18"	12	1.9
10222	1/2" x 3"	18"	12	1.2	10218	1-1/2" x 4"	18"	12	2.0
10223	1/2" x 3"	24"	12	1.3	10225	1-3/4" x 4"	18"	12	2.1
10224	1/2" x 3"	36"	12	2.3	10226	2" x 4"	18"	12	2.3





**LONG HANDLE STAINLESS STEEL SINGLE SPIRAL TUBE BRUSHES - 144 SERIES**

3' brush part with long handle, filled with medium stiff wire.



PART #	EXACT			WGT	PART #	EXACT			WGT
	DIA.	OAL	PACK			DIA.	OAL	PACK	
14402	1/4"	15"	1	.04	14442	1/4"	27"	1	.08
14404	3/8"	15"	1	.06	14444	3/8"	27"	1	.10
14406	1/2"	15"	1	.08	14446	1/2"	27"	1	.14
14408	5/8"	15"	1	.10	14448	5/8"	27"	1	.18
14410	3/4"	15"	1	.12	14450	3/4"	27"	1	.18
14412	7/8"	15"	1	.12	14452	7/8"	27"	1	.19
14414	1"	15"	1	.12	14454	1"	27"	1	.19
14416	1-1/4"	15"	1	.12	14456	1-1/4"	27"	1	.19
14418	1-1/2"	15"	1	.13	14458	1-1/2"	27"	1	.20

**LARGE DIAMETER BRASS TUBE BRUSHES**

Double stem with 1/4" male pipe thread



PART #	BRUSH DIA.	BRUSH LGTH	PACK	WGT	PART #	BRUSH DIA.	BRUSH LGTH	PACK	WGT
43639	1-1/2"	4-1/2"	1	.32	43656	3"	4-1/2"	1	.44
43642	1-3/4"	4-1/2"	1	.32	43658	3-1/4"	4-1/2"	1	.44
43645	2"	4-1/2"	1	.32	43660	3-1/2"	4-1/2"	1	.54
43648	2-1/4"	4-1/2"	1	.36	43662	3-3/4"	4-1/2"	1	.56
43651	2-1/2"	4-1/2"	1	.40	43664	4"	4-1/2"	1	.56

**NYLON LARGE DIAMETER TUBE BRUSHES**

Single stem with 1/4" male pipe thread



PART #	BRUSH DIA.	BRUSH LGTH	PACK	WGT	PART #	BRUSH DIA.	BRUSH LGTH	PACK	WGT
43739	1-1/2"	5"	1	.24	43756	3"	5"	1	.32
43742	1-3/4"	5"	1	.24	43758	3-1/4"	5"	1	.34
43745	2"	5"	1	.26	43760	3-1/2"	5"	1	.38
43748	2-1/4"	5"	1	.26	43762	3-3/4"	5"	1	.44
43751	2-1/2"	5"	1	.32	43764	4"	5"	1	.44



**REFRIGERATOR COIL DUSTING & CLEANING BRUSHES**

Used to clean refrigerator coils, fan blades and areas under and behind appliances



PART #	MATERIAL	STEM DIA.	DESCRIPTION	PK.	WT.
00415	Bristle	.200	Same as 00405 in single box	1	.44
50405	Bristle	.200	Same as 00405 on 4-color card	10	3.3
00406	W. Poly	.225	3/4" & 1-1/2" x 12" BR. 4-1/2" Wood HDL. 28" O.A.L.	36	9.8
00416	W. Poly	.225	Same as 00406 in single box	1	.48
00408	Bristle	.200	3/4" to 1-1/2" taper x 12" BR. 4-1/2" Wood HDL. 27" O.A.L.	36	9.2
00402	Bristle	.200	2" x 6" BR. x 24" O.A.L.	36	8.2
00403	Bk. Poly	.225	3/4" to 1-1/2" taper x 12" BR. 2-1/4" x 7" Br. x 24" O.A.L.	36	9.2

**DUCT CLEANING BRUSH**

7" long brush part with twisted wire stem and plastic, or wood handle



PART #	MATERIAL	BRUSH DIA.	OVERALL LENGTH	PACK	WGT
76210	Stainless Steel	2-1/8"	48"	1	.50
76220	Black Pat. Fibre	2-1/8"	48"	1	.40

**FIBRE/HAIR MIX FURNACE & BOILER BRUSHES - 7624 SERIES**

Extra heavy fill, 6" long brush part with twisted wire handle and large loop end



PART #	BRUSH DIA.	OVERALL LENGTH	PACK	WGT
76245	2"	42"	1	.44

**RADIATOR OR REFRIGERATOR BRUSHES**

Black natural bristle, twisted in wire with loop end



PART #	STEM DIA.	BRUSH DIA.	OVERALL LENGTH	BRUSH LENGTH	PACK	WGT
00442	.225	1" to 2"	42"	7"	12	4.56



**RADIATOR DUSTING & CLEANING BRUSH**

Twisted in wire with plastic handle at end



PART #	MATERIAL	BRUSH LENGTH	BRUSH DIA.	OVERALL LENGTH	PACK	WEIGHT
76221	Bristle or Hair	7"	2"	27"	1	.22
76324	Black Horsehair	7"	2-1/2"	27"	1	.22
76524	HH/Poly Mix	7"	2-1/2"	27"	1	.22

**LONG WOOD HANDLE DUSTING BRUSH W/FLARED TIP**

One row, curved lacquered wood handle



PART #	MATERIAL	BRUSH LENGTH	BRUSH TRIM	OVERALL LENGTH	PACK	WEIGHT
76026	Horsehair	10"	2-1/4"	24"	1	.26

**NYLON SINGLE SPIRAL CONDENSER TUBE BRUSHES - 437 & 937 SERIES**

Single spiral/single stem construction recommended for cleaning all tubes where deposits are light. 1/4" and 5/16" dia. brushes with female couplings have 8-32 threads, while 3/8" thru 1" dia. have 12-24 threads. 1/4", 5/16", and 3/8" dia. brushes with male couplings have 8-32 threads, while 7/16" thru 1" dia. have 1/4-28 threads



BRUSH DIA.	BRUSH LENGTH	FEMALE THREAD	FEMALE PART	MALE THREAD	MALE PART	PACK	WEIGHT
1/4"	3"	8-32	43702	8-32	93702	1	.04
5/16"	3"	8-32	43703	8-32	93703	1	.04
3/8"	4"	12-24	43704	8-32	93704	1	.08
7/16"	4"	12-24	43707	1/4-28	93707	1	.10
1/2"	4"	12-24	43710	1/4-28	93710	1	.10
9/16"	4"	12-24	43713	1/4-28	93713	1	.10
5/8"	4"	12-24	43716	1/4-28	93716	1	.10
11/16"	4"	12-24	43719	1/4-28	93719	1	.10
3/4"	4"	12-24	43722	1/4-28	93722	1	.10
13/16"	4"	12-24	43725	1/4-28	93725	1	.10
7/8"	4"	12-24	43728	1/4-28	93728	1	.10
15/16"	4"	12-24	43731	1/4-28	93731	1	.10
1"	4"	12-24	43733	1/4-28	93733	1	.10



**BRASS SINGLE SPIRAL CONDENSER TUBE BRUSHES- 436 & 936 SERIES**

Single spiral/double stem construction recommended for brass or copper tubes. 1/4" and 5/16" dia. brushes with female couplings have 8-32 threads, while 3/8" thru 1" dia. have 12-24 threads. 1/4", 5/16", and 3/8" dia. brushes with male couplings have 8-32 threads, while 7/16" thru 1" dia. have 1/4-28 threads



BRUSH DIA.	BRUSH LENGTH	FEMALE THREAD	FEMALE PART	MALE THREAD	MALE PART	PACK	WEIGHT
1/4"	3"	8-32	43602	8-32	93602	1	.06
5/16"	3"	8-32	43603	8-32	93603	1	.06
3/8"	4"	12-24	43604	8-32	93604	1	.10
7/16"	4"	12-24	43607	1/4-28	93607	1	.10
1/2"	4"	12-24	43610	1/4-28	93610	1	.10
9/16"	4"	12-24	43613	1/4-28	93613	1	.14
5/8"	4"	12-24	43616	1/4-28	93616	1	.14
11/16"	4"	12-24	43619	1/4-28	93619	1	.14
3/4"	4"	12-24	43622	1/4-28	93622	1	.14
13/16"	4"	12-24	43625	1/4-28	93625	1	.16
7/8"	4"	12-24	43628	1/4-28	93628	1	.16
15/16"	4"	12-24	43631	1/4-28	93631	1	.16
1"	4"	12-24	43633	1/4-28	93633	1	.16

**STAINLESS STEEL SINGLE SPIRAL - 435 & 935 SERIES**

Single spiral/double stem construction recommended for stainless steel tubes. 1/4" and 5/16" dia. brushes with female couplings have 8-32 threads, while 3/8" thru 1" dia. have 12-24 threads. 1/4", 5/16", and 3/8" dia. brushes with male couplings have 8-32 threads, while 7/16" thru 1" dia. have 1/4-28 threads



BRUSH DIA.	BRUSH LENGTH	FEMALE THREAD	FEMALE PART	MALE THREAD	MALE PART	PACK	WEIGHT
1/4"	3"	8-32	43502	8-32	93502	1	.02
5/16"	3"	8-32	43503	8-32	93503	1	.06
3/8"	4"	12-24	43504	8-32	93504	1	.10
7/16"	4"	12-24	43507	1/4-28	93507	1	.10
1/2"	4"	12-24	43510	1/4-28	93510	1	.10
9/16"	4"	12-24	43513	1/4-28	93513	1	.10
5/8"	4"	12-24	43516	1/4-28	93516	1	.14
11/16"	4"	12-24	43519	1/4-28	93519	1	.14
3/4"	4"	12-24	43522	1/4-28	93522	1	.14
13/16"	4"	12-24	43525	1/4-28	93525	1	.14
7/8"	4"	12-24	43528	1/4-28	93528	1	.14
15/16"	4"	12-24	43531	1/4-28	93531	1	.16
1"	4"	12-24	43533	1/4-28	93533	1	.16



**TIN HANDLE ACID & DOPE BRUSHES**

Selected horsehair bristles are pressed securely in tin handles. Sold in gross packs only



PART #	BRUSH WIDTH	HANDLE LENGTH	PACK	WEIGHT
10001	3/8"	5"	144	2.14
10002	1/2"	5"	144	2.64
10003	5/8"	5"	144	3.30

**WOOD HANDLE DOPE BRUSH**

Selected horsehair bristles secured tightly in metal ferrule. Sold in packs of 36



PART #	BRUSH WIDTH	OVERALL LENGTH	BRUSH MATERIAL	PACK	WEIGHT
10007	3/4"	7"	Horsehair	36	1.34

**IMPORT WHITE BRISTLE CHIP BRUSHES**

White Chinese bristle, metal ferrule. Plain sanded wood handle. Low priced economy import



PART #	WIDTH	THICKNESS	TRIM	PACK	WEIGHT
67191	1/2"	1/4"	1-3/8"	36	.72
67192	1"	5/16"	1-5/8"	36	1.44
67193	1-1/2"	5/16"	1-5/8"	36	1.44
67194	2"	5/16"	1-5/8"	24	1.44
67195	2-1/2"	3/8"	1-5/8"	24	2.40
67196	3"	3/8"	1-5/8"	24	2.40
67197	4"	11/16"	1-5/8"	12	3.84

**IMPORT BLACK BRISTLE CHIP**

Black Chinese bristle in a chemical resistant plastic handle



PART #	WIDTH	THICKNESS	TRIM	PACK	WEIGHT
67230	1/2"	1/4"	1-3/8"	1	.02
67231	1"	5/16"	1-5/8"	1	.04
67232	1-1/2"	5/16"	1-5/8"	1	.06
67233	2"	5/16"	1-5/8"	1	.06
67234	2-1/2"	3/8"	1-5/8"	1	.10
67235	3"	3/8"	1-5/8"	1	.10



**WIRE HANDLE CHIP BRUSHES**

Ideal for cleaning rust, corrosion, etc. in high heat situations



PART #	FILL	TRIM	OVERALL LENGTH	PACK	WEIGHT
81616	C. Steel	1-1/2"	5-1/2"	1	.10
81617	St. Steel	1-1/2"	5-1/2"	1	.10

**FLAT OIL/CHIP BRUSH**

Absorbent natural tampico or poly in a twisted wire handle with ring end. Overall length 8-1/4"



PART #	BRUSH MATERIAL	BRUSH WIDTH	BRUSH LENGTH	PACK	WEIGHT
24800	Tampico	3"	2-1/4"	1	.08
67118	Poly	2-1/4"	3"	1	.06

**CONDENSER FIN WHISK, DUSTERS & UPRIGHT BROOMS**

Plastic handle whisk for cleaning condenser fins and evaporators - A whisk with a hundred uses



PART #	BRUSH WIDTH	TRIM	OVERALL LENGTH	PACK	WEIGHT
02026	3-1/8"	2-1/8"	7"	1	.04

**BENCH DUSTER**

Tough and durable brush available in tampico and horsehair



PART #	MATERIAL	BRUSH FACE	OVERALL LENGTH	TRIM	PACK	WEIGHT
62034	Tampico	2" x 8"	14"	2-5/8"	1	.66



### POLYESTER VARNISH BRUSH

Durable black polyester filament with a solvent resistant plastic handle



PART #	WIDTH	THICKNESS	TRIM	PACK	WEIGHT
67240	1/2"	1/4"	1-5/8"	1	.02
67241	1"	5/16"	1-3/4"	1	.04
67242	1-1/2"	5/16"	1-3/4"	1	.06
67243	2"	5/16"	1-3/4"	1	.08
67244	2-1/2"	3/8"	2"	1	.10
67245	3"	3/8"	2"	1	.12

### PARTS CLEANING BRUSH

Tampico or Poly fill in strong plastic handles, comes in standard or flow thru style



PART #	BRUSH MATERIAL	OVERALL LENGTH	PACK	WEIGHT
25010	Poly	11-5/8"	1	.17
*25095	Poly	9"	1	.17
25013	Tampico	11-5/8"	1	.17
25015	All Poly	10-3/4"	1	.14

\*25095 is a Flow-Thru model.

### SHOE HANDLE WIRE HAND BRUSH

10" hardwood handle filled with tempered steel, stainless steel, bronze, brass, fibre or poly



PART #	FILL	ROWS	FILL SIZE	BRUSH PART	PACK	WEIGHT
81232	T Steel	2 x 17	.012	5"	1	.20
81233	T Steel	3 x 17	.012	5"	1	.28
81234	T Steel	4 x 17	.012	5"	1	.38



### CURVED HANDLE WIRE HAND BRUSHES

14" hardwood handle filled with tempered steel, stainless steel, bronze, brass, fibre or poly



PART #	FILL	ROWS	FILL SIZE	BRUSH PART	PACK	WEIGHT
*65341	Brass	4 x 17	.003	3-1/4"	1	.19
55104	Tampico	4 x 19	n/a	6-1/2"	1	.32
55105	Poly	4 x 19	.020	6-1/2"	1	.14
81008	T Steel	2 x 18	.012	6-1/2"	1	.22
81009	T Steel	3 x 19	.012	6-1/2"	1	.32
81010	T Steel	4 x 18	.012	6-1/2"	1	.42
81018	St. Steel	3 x 19	.012	6"	1	.22
81020	St. Steel	4 x 18	.012	6"	1	.38
81025	Bronze	4 x 18	.014	6"	1	.46
81044	Brass	3 x 19	.006	6"	1	.34
81045	Brass	4 x 19	.006	6"	1	.46

\*65341 has a straight, 8-3/4" long handle with a 3-1/4" brush part and 3/4" trim

### STOVE & APPLIANCE BRUSH

2 X 9 rows, 5/8" trim. 8-5/8" long hardwood block with 2-7/8" long brush part



PART #	FILL	ROWS	TRIM	OVERALL LENGTH	PACK	WEIGHT
25301	St. Steel	2 x 9	5/8"	8-5/8"	1	.08
25302	Brass	2 x 9	5/8"	8-5/8"	1	.08

### DIE CAST BRUSHES

3 X 7 rows, 1/2" trim. 7" long plastic block with 1-1/2" long brush part



PART #	FILL	ROWS	TRIM	OVERALL LENGTH	PACK	WEIGHT
25404	St. Steel	3 x 7	1/2"	7"	1	.04
25405	Brass	3 x 7	1/2"	7"	1	.04
25406	Bronze	3 x 7	1/2"	7"	1	.04
25407	Nylon	3 x 7	1/2"	7"	1	.04



**WELDER'S WIRE HAND BRUSH**

3 X 7 rows, 1/2" trim. 8" long hardwood block with 1-1/2" long brush part



PART #	FILL	ROWS	TRIM	OVERALL LENGTH	PACK	WEIGHT
81002	St. Steel	3 x 7	1/2"	8"	1	.04
81003	Brass	3 x 7	1/2"	8"	1	.04
81005	Nylon	3 x 7	1/2"	8"	1	.04
81006	Horsehair	3 x 7	1/2"	8"	1	.04

**BRASS WIRE UTILITY BRUSHES**

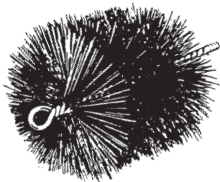
Curved hardwood block with crimped brass wire



PART #	FILL	ROWS	TRIM	BRUSH PART	PACK	WEIGHT
27698	Brass	6 x 9	5/8"	1-1/4" x 2-1/4"	1	.18
27668	Brass	9 x 10	5/8"	2-1/4" x 3"	1	.36

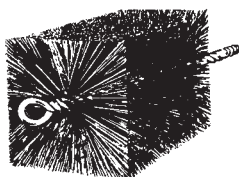
**PROFESSIONAL CHIMNEY BRUSHES**

All our professional chimney brushes have extra heavy 1/2" dia. stems, constructed with four lengths of .162 dia. galvanized steel wire. Plated shaft with 3/8" male pipe threads are secured to the stems for easy coupling to our heaviest fiberglass rods



**MASTER CLEAN**

Fully filled with round tempered steel wire using double spiral construction. These premium brushes have been the choice of many professional chimney sweeps for years



ROUND				SQUARE			
PART #	SIZE	PACK	WEIGHT	PART #	SIZE	PACK	WEIGHT
33066	6"	1	1.90	33277	7"	1	2.10
33076	7"	1	2.00	33288	8"	1	2.10
33086	8"	1	2.10	33299	9"	1	2.60
33096	9"	1	2.50	33310	10"	1	2.80
33106	10"	1	2.60	33311	11"	1	2.90
33116	11"	1	2.70	33312	12"	1	3.10
33126	12"	1	2.80	33314	14"	1	3.40
33266	6"	1	2.00				



**FLUE, DUCT, CHIMNEY RODS & T-HANDLES**



PART #	PIPE THREAD	PACK	WEIGHT
30599	1/4"	1	.22
30600	3/8"	1	.24

**FLUE BRUSH HANDLE**

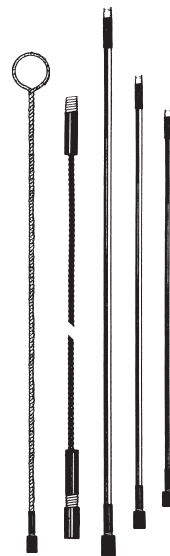
Semi-flexible, twisted galvanized wire with one female end and 1" ring at other end



PART #	HANDLE LENGTH	PACK	WEIGHT
30328	3"	1	.56
30438	4"	1	.70
30548	5"	1	.86
30658	6"	1	1.06

**FIBERGLASS RODS**

Strong extruded fiberglass rods in a variety of diameters provide the proper stiffness for most jobs. We recommend using these nonconducting fiberglass rods whenever possible



PART #	DIA.	LENGTH	PIPE THREAD	PACK	WEIGHT
30664	.350	4'	1/4"	1	.42
30666	.350	6'	1/4"	1	.68
36048	.440	4'	3/8"	1	.66
36072	.440	6'	3/8"	1	.92
30660	.480	6'	3/8"	1	1.24

**EXTENSION HANDLES**

Semi-flexible, twisted galvanized wire with female one end and male other

PART #	HANDLE LENGTH	PACK	WEIGHT
31438	4'	1	.78
31448	5'	1	.92
31458	6'	1	1.04



**TEMPERED WIRE SINGLE SPIRAL FLUE BRUSHES**

4-1/2" long tempered wire brush part, 1/4" male pipe thread



PART #	FLUE SIZE	BRUSH DIA.	PK.	WT.	PART #	FLUE SIZE	BRUSH DIA.	PK.	WT.
43206	1"	3/4"	1	.28	43224	2-3/4"	2-1/2"	1	.42
43208	1-1/4"	1"	1	.30	43226	3"	2-3/4"	1	.44
43212	1-1/2"	1-1/4"	1	.32	43228	3-1/4"	3"	1	.46
43214	1-3/4"	1-1/2"	1	.34	43232	3-1/2"	3-1/4"	1	.48
43216	2"	1-3/4"	1	.36	43234	3-3/4"	3-1/2"	1	.50
43218	2-1/4"	2"	1	.38	43236	4"	3-3/4"	1	.52
43222	2-1/2"	2-1/4"	1	.40	43238	4-1/4"	4"	1	.54

**TEMPERED WIRE - DOUBLE SPIRAL**

4-1/2" long tempered wire brush part, 1/4" male pipe thread. Brushes are individually boxed



PART #	FLUE SIZE	BRUSH DIA.	PK.	WT.	PART #	FLUE SIZE	BRUSH DIA.	PK.	WT.
43306	1"	3/4"	1	.30	43324	2-3/4"	2-1/2"	1	.44
43308	1-1/4"	1"	1	.32	43326	3"	2-3/4"	1	.46
43312	1-1/2"	1-1/4"	1	.34	43328	3-1/4"	3"	1	.48
43314	1-3/4"	1-1/2"	1	.36	43332	3-1/2"	3-1/4"	1	.50
43316	2"	1-3/4"	1	.38	43334	3-3/4"	3-1/2"	1	.52
43318	2-1/4"	2"	1	.40	43336	4"	3-3/4"	1	.54
43322	2-1/2"	2-1/4"	1	.42	43338	4-1/4"	4"	1	.56

**STAINLESS STEEL - SINGLE SPIRAL FLUE BRUSHES**

4-1/2" long brush part, 1/4" male pipe thread. Brushes are individually boxed



PART #	FLUE SIZE	BRUSH DIA.	PK.	WT.	PART #	FLUE SIZE	BRUSH DIA.	PK.	WT.
43536	1-1/2"	1-1/4"	1	.36	43559	3-1/2"	3-1/4"	1	.52
43539	1-3/4"	1-1/2"	1	.38	43562	3-3/4"	3-1/2"	1	.54
43542	2"	1-3/4"	1	.40	43565	4"	3-3/4"	1	.56
43545	2-1/4"	2"	1	.42	43568	4-1/4"	4"	1	.58
43548	2-1/2"	2-1/4"	1	.44	43571	4-1/2"	4-1/4"	1	.60
43551	2-3/4"	2-1/2"	1	.46	43573	4-3/4"	4-1/2"	1	.62
43553	3"	2-3/4"	1	.48	43576	5"	4-3/4"	1	.64
43556	3-1/4"	3"	1	.50	43579	5-1/4"	5"	1	.66



**FLAT BAFFLE BOILER BRUSH**

Double spiral, black oil tempered wire brush part with 1/4" male pipe thread. Brushes are individually boxed



PART #	BRUSH SIZE	BRUSH LENGTH	PK.	WT.
41218	1"	4-1/2"	1	.16
41228	2"	4-1/2"	1	.30
41238	3"	4-1/2"	1	.38
41248	4"	4-1/2"	1	.44

**ORIGINAL COLUMBIA BOILER BRUSH**

Bristles stick out in all directions and are rough cut to a rectangular shape, approximately 1/2" x 1". Much lighter fill than the flat style



PART #	BRUSH SIZE	HANDLE LENGTH	PACK	WEIGHT
46328	1/2" x 1" x 4"	3'	1	.36
46348	1/2" x 1" x 4"	4'	1	.46

**FLAT STYLE COLUMBIA BOILER BRUSH**

Bristles stick out to the 1" dimension as round brush is flattened after being made



PART #	BRUSH SIZE	OVERALL LENGTH	PACK	WEIGHT
46302	1/2" x 1" x 4-1/2"	27"	1	.41
46304	1/2" x 1" x 4-1/2"	48"	1	.72

**WEILER MCLAIN BOILER BRUSH**

1-1/2" x 1-1/8" x 4" oval shaped brush with crimped carbon steel or soft bristle. Long twisted wire handles with 1" ring end



PART #	MATERIAL	HANDLE DIA.	O.A.L.	PK.	WT.
14465	Crimped Wire	.20	30"	1	.32
14466*	Crimped Wire	.25	30"	1	.34
14467	Bristle	.20	30"	1	.40
14468*	Crimped Wire	.25	46"	1	.46
14476	Crimped Wire	.135	30"	1	.12
14477	Bristle	.135	30"	1	.10

**EXTRA LONG HANDLE/STIFF WIRE BRUSHES- 7625 SERIES**

Single spiral fine wire brush part 4" long, twisted in wire handle with loop end. 42" overall length



PART #	BRUSH SIZE	OVERALL LENGTH	PACK	WEIGHT
76252	1/2"	42"	1	.26
76253	3/4"	42"	1	.28
76254	1"	42"	1	.44
76255	1-1/2"	42"	1	.46
76256	2"	42"	1	.50
76257	2-1/2"	42"	1	.52
76258	3"	42"	1	.54





**CONDENSER BRUSHES  
ACCESSORIES & ADAPTERS**

**SPIN-GRIT™**

Single stem construction with silicone carbide impregnated nylon recommended for brass tubes. This brush is made oversized so the filament will lay over, resulting in increased contact with surface, providing better cleaning and longer life than conventional condenser cleaning brushes



BRUSH DIA.	TUBE SIZE	FEMALE THREAD	FEMALE PART #	MALE THREAD	MALE PART #	PK.	WT.
1/2"	1/4" - 5/16"	8-32	43482	8-32	93482	1	.02
1/2"	3/8" - 9/16"	12-24	43484	1/4-28	93484	1	.06
1/2"	5/8" - 11/16"	12-24	43486	1/4-28	93486	1	.06
1/2"	3/4" - 1"	12-24	43488	1/4-28	93488	1	.07

**SPIN-CLEAN™**

Single stem construction with silicone carbide impregnated nylon. This brush is made with a tapered trim to allow better cleaning of enhanced condenser tubes. The long bristles are designed oversized with the intention of bending over, allowing the aggressive filament to come into maximum contact with the lands. The short bristles are able to get into the grooves. These brushes provide better cleaning and longer life than conventional condenser cleaning brushes



PART #	TUBE SIZE	SMALL DIA. OF BRUSH	LARGE DIA. OF BRUSH
93490	5/8"	5/8"	1"
93491	1/2"	1/2"	3/4"
93492	3/4"	3/4"	1-1/8"

**RODS & ROD HANDLES**



#13000 – “T” handgrip handle with 1/4-28 cap nut. 4” long x 1/2” diameter. For use with #13010 rods.



#13001 – “T” handgrip handle with 12-24 screw. 4” long x 1/2” diameter. For use with #13002 and #13003 rods.



#13002 – 24” aluminum extension rod 5/16” diameter with 12-24 male thread one end, female other. For use with 3/8” through 1” diameter condenser brushes.



#13003 – 36” aluminum extension rod 5/16” diameter with 12-24 male thread one end, female other. For use with 3/8” through 1” diameter condenser brushes.



#13010 – 36” galvanized steel condenser brush rod with 1/4-28 male thread one end and female thread at other end. For use with 1/4-28 male thread brushes.



#13041 – “T” handle with 8-32 male thread one end. For use with #13042 rods.



#13042 – 24” x .162 dia. rod, 8-32 female thread one end, male 8-32 thread other end.



#13044 – 48” x .162 dia. rod with 8-32 male thread one end, formed handle other end. For use with 1/4” and 5/16” dia. condenser brushes.

**ADAPTERS**

- #13006 – 1/4-28 male thread to 12-24 male thread
- #13008 – 1/4-28 female thread to 12-24 male thread



**CLEVELAND CONTROLS AIR PRESSURE SENSING SWITCH**

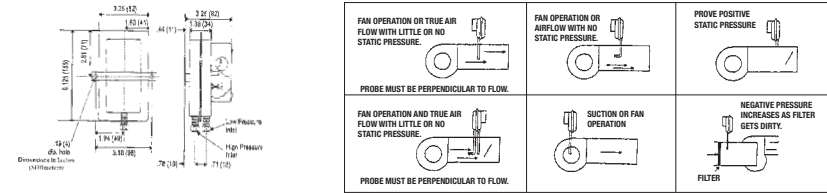
The model AFS-222 is a general purpose proving switch designed for HVAC and Energy Management applications. It may be used to sense positive, negative, or differential air pressure. Installation kit included. Replaces White Rodgers 770-1



Set point range: 0.05 ± .02” W.C. to 12.0” W.C.  
Operating temperature range: -40°F to 180°F  
Approvals: UL, FM, CSA

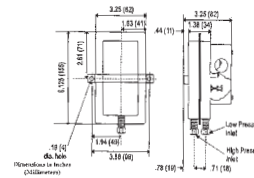
AFS-222-121

**Location of Sample Lines for Typical Applications**



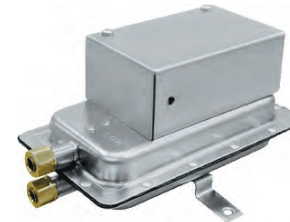
**CLEVELAND CONTROLS AIR PRESSURE SENSING SWITCH**

The model AFS-262 is a general purpose proving switch designed for HVAC and Energy Management applications. It may be used to sense positive, negative, or differential air pressure. Installation kit included



Set point range: 0.05 ± 0.02” W.C. to 2.0” W.C.  
Operating temperature range: -40° F to 180° F  
Approvals: UL, FM, CSA, CE

AFS-262-121



**SERIES AFS SWITCHES**



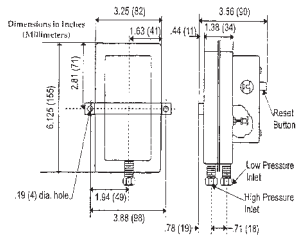
**CLEVELAND CONTROLS AIR PRESSURE SENSING SWITCH WITH MANUAL RESET**



The model AFS-460 is a general purpose proving switch designed to require manual operator reset following activation. It can be used to sense positive, negative, or differential air pressure in HVAC and Energy Management applications that require operator interface. Installation kit included

Set point range: 0.40 + 0.06" W.C. to 12.0" W.C.  
 Operating temperature range: -40°F to 180°F  
 Approvals: UL, CSA

AFS-460-121



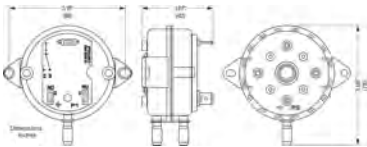
SERIES AFS SWITCHES



**CLEVELAND CONTROLS AIR PRESSURE SENSING SWITCH**

The NS2 series, Universal Small Footprint Air Switch, replaces hundreds of other small footprint exact replacement air switches today. Five separate springs cover ranges from .05"WC to 10"WC. Set screw adjustment with allen wrench included. Eight different orifice restrictors to set different time delays, and comes with two brackets for all applications

NS2-0000-03



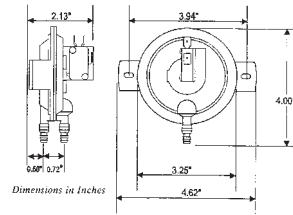
**CLEVELAND CONTROLS AIR PRESSURE SENSING SWITCH KIT**



Series RSS-495-11 Air Sensing Switch Kit contains compact, economical switches designed for a residential furnace and light commercial aftermarket applications. The RSS-495 switches have an adjustable set point range of 0.25" W.C. to 1.0" W.C. (they have been factory set to activate on a pressure rise of 0.25" W.C.). The field adjustability makes these switches ideal for aftermarket residential furnace applications, electronic air cleaners and humidifiers

Adjustable range: 0.25 + 0.05" W.C. to 1.0 + 0.05" W.C.  
 Operating temperature range: -40°F to 190°F  
 Approvals: UL, CSA, CE, NRTL, AUST. GAS ASSOC>

RSS-495-11



SERIES RSS SWITCHES

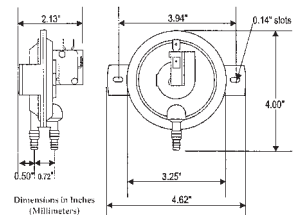


**CLEVELAND CONTROLS AIR PRESSURE SENSING SWITCH KIT**

Series RSS-498-13 Air Sensing Switch Kit contains compact, economical switches designed for residential furnace and light commercial aftermarket applications. The RSS-498 switches have an adjustable set point range of 1.0" W.C. to 4.0" W.C. (They have been factory set to activate on a pressure rise of 1.0" W.C.) The field adjustability makes these switches ideal for aftermarket residential furnace applications, electronic air cleaners and humidifiers

Adjustable range: 1.0 + 0.05" W.C. to 4.0 + 0.05" W.C.  
 Operating temperature range: -40° F to 180° F  
 Approvals: UL, CSA, CE, NRTL, AUST. GAS ASSOC.

RSS-498-13



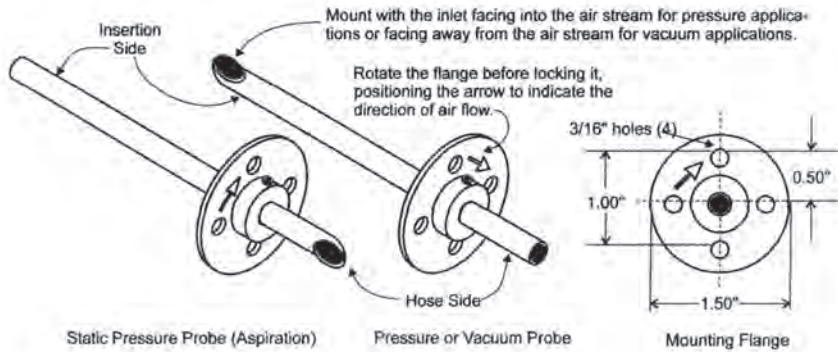
SERIES RSS SWITCHES



### Cleveland Control Sensing Probe Kit

The sensing probe kit, for air pressure sensing switches, is a handy accessory when a sampling tube is needed. The kit contains: one 7" universal probe, one mounting flange, one flange-locking set screw (6-32, slotted), one 3' clear vinyl tubing (1/4" ID x 3/8" OD x 1/16" wall), two flange-mounting screws (6-32 x 3/8" tap type 25), and one slip-on adapter (1/4")

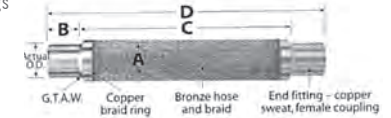
60681



### Henry Technologies Vibration Absorbers

Specify Henry Technologies Vibration Absorbers in refrigeration and air conditioning systems to:

- Reduce vibration and noise
- Extend compressor life
- Allow for horizontal or vertical movement
- Relieve stress on the compressor housing
- Reduce wear on the bearings



### Henry Technologies Vibration Absorber Specifications

Part Number	To Fit Copper Tube "A"		"B" Nominal Hose I.D.	"D" Fitting Length	Working Assembly Length	Maximum
	Actual O.D.	Nominal Tube				Pressure PSIG@70° F
VAB-2	1/4"	1/8"	1/4"	1/2"	7"	450
VAB-3	3/8"	1/4"	1/4"	1/2"	8-1/4"	450
VAB-4	1/2"	3/8"	3/8"	5/8"	9"	450
VAB-5	5/8"	1/2"	1/2"	7/8"	9-3/4"	450
VAB-6	3/4"	5/8"	1/2"	1"	10"	450
VAB-7	3/4"	5/8"	3/4"	1-1/8"	11-1/4"	440
VAB-8	7/8"	3/4"	3/4"	1-1/4"	11-1/2"	440
VAB-9	1-1/8"	1"	1"	1-1/2"	13"	400
VAB-10	1-3/8"	1-1/4"	1-1/4"	1-5/8"	14-3/4"	400
VAB-11	1-5/8"	1-1/2"	1-1/2"	2"	17"	400
VAB-12	2-1/8"	2"	2"	2-1/2"	20"	390
VAB-13SS	2-5/8"	2-1/2"	2-1/2"	3"	24"	340
VAB-14SS	3-1/8"	3"	3"	3-1/2"	27"	300

1. Minimum burst pressure is 5 times the maximum working pressure.
2. Hose may be helical or annular type.
3. Hose = C51000 (95/5)  
Braid = C22000 (90/10)
4. Length = D ± 1/4"
5. Hose is not to be used with ammonia refrigerants

For higher pressure applications, stainless steel also available. Please call for pricing



**CUSHIONED TUBING CLAMPS, GALVANIZED**

These channel mounted clamping systems are ideal for multiple line runs. They absorb shock and vibration, reduce unwanted noise, and prevent galvanic corrosion. The clamp features a unique shoulder stud which is securely fastened to one clamp half. This Controlled Squeeze design eliminates over-tightening and rotation while nylon insert nut assures a positive lock. Stocked with electro-dichromate finish, and available in stainless steel. The cushion is chemical resistant, and has a -50°F to 275°F operating range. A patented “Living Hinge” allows the cushion to be spread apart for quick, easy installation

Z004T008 thru Z066N074

**TUBE X PIPE O.D.**

Z004T008	1/4"
Z006T010	3/8"
Z008T012	1/2"
Z010T014	5/8"
Z012T016	3/4"
Z014T018	7/8"
Z016T020	1"
Z018T022	1-1/8"
Z020T024	1-1/4"
Z022T026	1-3/8"
Z024N028	1-1/2"
Z026N030	1-5/8"
Z028N032	1-3/4"
Z030N034	1-7/8"
Z032N036	2"
Z034N040	2-1/8"
Z036N042	2-1/4"
Z038N044	2-3/8"
Z040N046	2-1/2"
Z042N048	2-5/8"
Z046N052	2-7/8"
Z050N054	3"
Z050N056	3-1/8"
Z053N060	3-5/16"
Z056N062	3-1/2"
Z058N064	3-5/8"
Z064N072	4"
Z066N074	4-1/8"

00402.....	51	07-014.....	20	14404.....	64
00403.....	51	07-034 / 08-034.....	20	14406.....	64
00405.....	51	07-038 / 08-038.....	20	14408.....	64
00406.....	51	07-100 / 08-100.....	20	14410.....	64
00408.....	51	07-114 / 08-114.....	20	14412.....	64
00415.....	51	1-000.....	38	14414.....	64
00442.....	51	10001.....	55	14416.....	64
00450.....	51	10002.....	55	14418.....	64
00450.....	51	10003.....	55	14422.....	64
00924-1.....	48	10007.....	55	14444.....	64
00925-1.....	48	1-001.....	38	14446.....	64
00926-1.....	48	1-003.....	38	14448.....	64
00927-1.....	48	1-004.....	38	14450.....	64
00928-1.....	48	10209.....	49	14452.....	64
00929-1.....	48	10210.....	49	14454.....	64
00930-1.....	48	10211.....	49	14456.....	64
00931-1.....	48	10212.....	49	14458.....	64
00932-1.....	48	10-212.....	11	14465.....	75
00933-1.....	48	10213.....	49	14466.....	75
00934-1.....	48	10214.....	49	14467.....	75
00935-1.....	48	10216.....	49	14468.....	75
00936-1.....	48	10217.....	49	14476.....	75
00937-1.....	48	10218.....	49	14477.....	75
00943-1.....	48	10-219.....	11	14504.....	63
00944-1.....	48	10220.....	49	14506.....	63
00945-1.....	48	10221.....	49	14509.....	63
00946-1.....	48	10222.....	49	14510.....	63
00947-1.....	48	10223.....	49	14512.....	63
00948-1.....	48	10224.....	49	14515.....	63
00949-1.....	48	10225.....	49	14517.....	63
00950-1.....	48	10226.....	49	14518.....	63
00951-1.....	48	10T.....	57	14520.....	63
00952-1.....	48	13000.....	76	14524.....	63
00953-1.....	48	13001.....	76	14529.....	63
00954-1.....	48	13002.....	76	14530.....	63
00963-6.....	48	13003.....	76	14533.....	63
00964-6.....	49	13006.....	76	14539.....	63
00965-6.....	49	13008.....	76	14547.....	63
00966-6.....	49	1301.....	41	14565.....	63
00967-6.....	49	13010.....	76	14567.....	63
00968-6.....	49	13041.....	76	14573.....	63
00969-6.....	49	13042.....	76	14582.....	63
00970-6.....	49	13044.....	76	14588.....	63
00996-100.....	49	1324.....	41	15-012 / 16-012.....	30
00996-12.....	49	132ME.....	25	15-014.....	30
00998-100.....	49	1335.....	41	1502.....	41
00998-12.....	49	1401.....	41	15-034 / 16-034.....	30
02026.....	55	14402.....	64		
07-012 / 08-012.....	20				

PART NUMBER INDEX

15-038.....	30	2634-000.....	47	41238.....	75
1505.....	41	2636-002.....	47	41248.....	75
15-100 / 16-100.....	30	263 - R.....	51	43206.....	74
15-114 / 16-114.....	30	27668.....	72	43208.....	74
1600D.....	43	27698.....	72	43212.....	74
1601.....	41	3-000.....	50	43214.....	74
1602.....	41	3-001.....	50	43216.....	74
1605.....	41	3-003.....	50	43218.....	74
1608.....	41	3-004.....	50	43222.....	74
1613.....	41	30200.....	20	43224.....	74
1614.....	41	30328.....	73	43226.....	74
161-4.....	39	30438.....	73	43228.....	74
161-6.....	39	30548.....	73	43232.....	74
161-8.....	39	30599.....	73	43234.....	74
1631.....	41	30600.....	73	43236.....	74
1653 - 3B.....	59	30658.....	73	43238.....	74
1653 - 3R.....	59	30660.....	73	43306.....	74
1700D.....	43	30664.....	73	43308.....	74
1813.....	41	30666.....	73	43312.....	74
1901.....	41	30T.....	57	43314.....	74
1929.....	41	30T1.....	57	43316.....	74
2001.....	41	31438.....	73	43318.....	74
2012.....	41	31448.....	73	43322.....	74
2013.....	41	31458.....	73	43324.....	74
2015.....	41	3-1802.....	57	43326.....	74
20T.....	57	3201.....	41	43328.....	74
20T1.....	57	3202.....	41	43332.....	74
2113-2001.....	53	33066.....	72	43334.....	74
2116.....	41	33076.....	72	43336.....	74
240116.....	19	33086.....	72	43338.....	74
240117.....	19	33096.....	72	43482/93482.....	76
2410.....	41	33106.....	72	43484/93484.....	76
2414.....	41	33116.....	72	43486/93486.....	76
24800.....	69	33126.....	72	43502/93502.....	67
25010.....	70	33266.....	72	43503/93503.....	67
25013.....	70	33277.....	72	43504/93504.....	67
25015.....	70	33288.....	72	43507/93507.....	67
2504.....	41	33299.....	72	43510/93510.....	67
25301.....	71	33310.....	72	43513/93513.....	67
25302.....	71	33311.....	72	43516/93516.....	67
25404.....	71	33312.....	72	43519/93519.....	67
25405.....	71	33314.....	72	43522/93522.....	67
25406.....	71	36048.....	73	43525/93525.....	67
25407.....	71	36072.....	73	43531/93531.....	67
2614-000.....	47	40T.....	57	43533/93533.....	67
2614-003.....	47	40T1.....	57	43536.....	74
2616-002.....	47	40T2.....	57	43539.....	74
		41218.....	75	43542.....	74
		41228.....	75	43545.....	74

PART NUMBER INDEX

43548.....	74	43731/93731.....	66	60T.....	57
43551.....	74	43733/93733.....	66	60T4.....	57
43553.....	74	43736.....	64	61-2.....	39
43556.....	74	43739.....	64	61-3.....	39
43559.....	74	43742.....	64	61-4.....	39
43562.....	74	43745.....	64	61-5.....	39
43565.....	74	43748.....	64	61-6.....	39
43568.....	74	43751.....	64	61-7.....	39
43571.....	74	43753.....	64	61-8.....	39
43573.....	74	43756.....	64	6-1925.....	56
43576.....	74	43758.....	64	61P-2.....	39
43579.....	74	43760.....	64	61P-4.....	39
43602/93602.....	67	43762.....	64	61P5.....	39
43603/93603.....	67	43764.....	64	62034.....	69
43604/93604.....	67	43888/93488.....	76	62-10.....	39
43607/93607.....	67	43MB-000.....	47	62-2.....	39
43610/93610.....	67	43MB-002.....	47	62-3.....	39
43613/93613.....	67	43SB-000.....	47	62-4.....	39
43616/93616.....	67	43SB-002.....	47	62-5.....	39
43619/93619.....	67	4507P.....	24	62-6.....	39
43622/93622.....	67	46245.....	65	62-7.....	39
43625/93625.....	67	46302.....	75	62-8.....	39
43628/93528.....	67	46304.....	75	64-10.....	39
43628/93628.....	67	46328.....	75	64-2.....	39
43631/93631.....	67	46348.....	75	64-4.....	39
43633/93633.....	67	5-001.....	50	64-5.....	39
43636.....	64	50T.....	57	64-6.....	39
43639.....	64	55104.....	71	6-4626.....	56
43642.....	64	55105.....	71	64-8.....	39
43645.....	64	58-012/ 59-012.....	29	65-10.....	39
43648.....	64	58-014 / 59-014.....	29	65-2.....	39
43651.....	64	58-034 / 59-034.....	29	65341.....	71
43653.....	64	58-038 / 59-038.....	29	65-4.....	39
43656.....	64	58-100 / 59-100.....	29	65-5.....	39
43658.....	64	58-114 / 59-114.....	29	65-6.....	39
43660.....	64	60-012.....	30	6-6003.....	56
43662.....	64	60-034.....	30	66-10-8.....	39
43664.....	64	60-10.....	39	6-6136.....	56
43702/93702.....	66	60-2.....	39	66-2-2.....	39
43703/93703.....	66	60-3.....	39	66-3-2.....	39
43704/93704.....	66	60-4.....	39	66-3-4.....	39
43707/93707.....	66	60-5.....	39	66-4-2.....	39
43710/93710.....	66	60-6.....	39	66-4-4.....	39
43713/93713.....	66	60-7.....	39	66-5-2.....	39
43716/93716.....	66	60-8.....	39	66-5-4.....	39
43719/93719.....	66	60P-4.....	39	66-6-2.....	39
43722/93722.....	66	60P-6.....	39		
43725/93725.....	66	60P-8.....	39		
43728/93728.....	66				

PART NUMBER INDEX

66-6-4.....	39
66-6-6.....	39
66-68.....	39
66-8-4.....	39
66-8-6.....	39
66-8-8.....	39
67118.....	69
67191.....	68
67192.....	68
67193.....	68
67194.....	68
67195.....	68
67196.....	68
67197.....	68
67230.....	68
67231.....	68
67232.....	68
67233.....	68
67234.....	68
67235.....	68
67240.....	70
67241.....	70
67242.....	70
67243.....	70
67244.....	70
67245.....	70
6-7748.....	56
68-10-12.....	39
68-10-6.....	39
68-10-8.....	39
68-2-2.....	39
68-3-2.....	39
68-3-4.....	39
68-4-2.....	39
68-4-4.....	39
68-4-6.....	39
68-4-8.....	39
68-5-2.....	39
68-5-4.....	39
68-6-2.....	39
68-6-4.....	39
68-6-6.....	39
68-6-8.....	39
68-7-4.....	39
68-8-4.....	39
68-8-6.....	39
68-8-8.....	39
69-10-8.....	39
69-3-4.....	39
69-4-2.....	39
69-4-4.....	39
69-4-6.....	39
69-5-2.....	39
69-5-4.....	39
69-5-6.....	39
69-6-2.....	39
69-6-4.....	39
69-6-6.....	39
69-6-8.....	39
69-8-6.....	39
69-88.....	39
70-4-2.....	39
70-4-4.....	39
70-6-4.....	39
70-6-6.....	39
710.....	44
712.....	44
714.....	44
71MB-000.....	70
71MB-002.....	47
71PR-000.....	47
71PR-049.....	47
722.....	25
72-4-2.....	39
72-4-4.....	39
72-6-4.....	39
729.....	25
757WC.....	4
76026.....	66
76200.....	39
76210.....	65
76220.....	65
76221.....	39
76243.....	65
76252.....	75
76253.....	75
76254.....	75
76255.....	75
76256.....	75
76257.....	75
76258.....	75
76324.....	66
76-4-2.....	39
A1580D134M.....	39
81002.....	72
81003.....	72

81005.....	72
81006.....	72
81008.....	71
81009.....	71
81010.....	71
81018.....	71
81020.....	71
81025.....	71
81044.....	71
81045.....	71
81232.....	70
81233.....	70
81234.....	70
81616.....	69
81617.....	69
8420P.....	24
8430P.....	24
8440P.....	24
8732A.....	3
8732A3.....	3
8732B.....	3
8732B3.....	3
8732C.....	3
8732C3.....	3
8732W.....	3
8732W3.....	3
8736R.....	3
90T.....	57
93490.....	76
93491.....	76
93492.....	76
A0120D100.....	35
A0340D114.....	35
A0380D100.....	35
A0580D100.....	35
A0780D114.....	35
A0780D114M.....	35
A10WPR.....	44
A1180D114.....	35
A1180D134.....	35
A1180D134M.....	35
A12WPR.....	44
A1380D134.....	35
A-1400-003BO.....	55
A-1402-003YW.....	55
A1580D134.....	35
A1580D134M.....	35
A35WPR.....	44
AA0120D100.....	35

PART NUMBER INDEX

AA0340D114.....	35
AA0380D100.....	35
AA0580D100.....	35
AA0780D114.....	35
AA1180D114.....	35
AA1180D134.....	35
AA1380D134.....	35
AB10.....	15
ABC10-R.....	51
ABC12-R.....	51
ABC15-R.....	51
ABC1-R.....	51
ABC20-R.....	51
ABC2-R.....	51
ABC30-R.....	51
ABC3-R.....	51
ABC4-R.....	51
ABC5-R.....	51
ABC6-R.....	51
ABC8-R.....	51
AC&RA.....	3
AC&RB.....	3
AC&RC.....	3
AC&RW.....	3
AFS-222-121.....	77
AFS-262-121.....	77
AFS-460-121.....	78
AGC1/2-R.....	51
AGC1/4-R.....	51
AGC1/8-R.....	51
AGC10-R.....	51
AGC1-1/2-R.....	51
AGC12-R.....	51
AGC15-R.....	51
AGC1-6/10-R.....	51
AGC1-R.....	51
AGC20-R.....	51
AGC2-1/2-R.....	51
AGC25-R.....	51
AGC2-R.....	51
AGC3/4-R.....	51
AGC3/8-R.....	51
AGC30-R.....	51
AGC3-R.....	51
AGC4-R.....	51
AGC5-R.....	51
AGC6-R.....	51
AGC8-R.....	51
AGX1.....	51

AGX1/4.....	51
AGX2.....	51
AGX2-1/2.....	51
AGX3.....	51
AGX3/8.....	51
AGX4.....	51
AGX5.....	51
AP100.....	15
AP12.....	15
AP14.....	15
ATC1.....	52
ATC10.....	52
ATC15.....	52
ATC2.....	52
ATC20.....	52
ATC25.....	52
ATC3.....	52
ATC30.....	52
ATC4.....	52
ATC40.....	52
ATC5.....	52
ATC7-1/2.....	52
AW12.....	21
AW58.....	21
BA0120D100.....	37
BA0340D114.....	37
BA0380D100.....	37
BA0580D100.....	37
BA0780D114.....	37
BA0780D114M.....	37
BA1180D114.....	37
BA1180D134.....	37
BA1380D134.....	37
BAA0120D100.....	37
BAA0340D114.....	37
BAA0380D100.....	37
BAA0580D100.....	37
BAA0780D114.....	37
BAA1180D114.....	37
BAA1180D134.....	37
BAA1380D134.....	37
BAL-13.....	53
BH012FL034T.....	35
BH012FL100T.....	35
BH0120D100T.....	35
BH0340D114T.....	35
BH038FL034T.....	35
BH0380D034T.....	35
BH058FL100T.....	35

BH0580D100T.....	35
BH0780D114T.....	35
BH1180D114T.....	35
BH1180D134T.....	35
BH1380D134T.....	35
BS30.....	56
BT100.....	38
BT134.....	38
BV0120D100T.....	35
BV0380D034T.....	35
BV0580D100T.....	35
BV0780D114T.....	35
BV1180D114T.....	35
BY12.....	28
BY34.....	28
CC100.....	16
CC12.....	16
CG101.....	20
CG102SC.....	20
C-1K55-A020.....	27
CL10.....	54
CR2302.....	54
CR32.....	58
DC12.....	23
EC-100.....	60
EF12.....	5
EF24.....	5
EG1.....	8
EG5.....	8
EG55.....	8
EL10.....	23
EP2.....	4
FA6060.....	48
FA6080.....	48
FA6090.....	48
FA6490.....	48
FB42.....	21
FF10.....	54
FF75.....	18
FG12.....	61
FM222.....	4
FP2.....	52
FP3.....	52
FRNR10.....	51
FRNR100.....	51
FRNR12.....	51
FRNR125.....	51

PART NUMBER INDEX

FRNR15.....	51
FRNR150.....	51
FRNR175.....	51
FRNR2.....	51
FRNR200.....	51
FRNR2-1/2.....	51
FRNR225.....	51
FRNR25.....	51
FRNR30.....	51
FRNR35.....	51
FRNR4.....	51
FRNR40.....	51
FRNR45.....	51
FRNR5.....	51
FRNR50.....	51
FRNR5-6/10.....	51
FRNR60.....	51
FRNR6-1/4.....	51
FRNR70.....	51
FRNR8.....	51
FRNR80.....	51
FRNR90.....	51
FRSR10.....	51
FRSR100.....	51
FRSR12.....	51
FRSR15.....	51
FRSR175.....	51
FRSR2.....	51
FRSR20.....	51
FRSR25.....	51
FRSR30.....	51
FRSR3-2/10.....	51
FRSR35.....	51
FRSR40.....	51
FRSR45.....	51
FRSR5.....	51
FRSR50.....	51
FRSR60.....	51
FRSR70.....	51
FRSR8.....	51
FRSR80.....	51
FRSR9.....	51
FRSR90.....	51
FW1701.....	26
G020-0012-00.....	38
G020-0012-09.....	38
G020-0012-10.....	38
G100AILS.....	9
G13PR.....	44
GB10.....	38
GB10.....	47
GH5850.....	58
GLQ10.....	51
GLQ3.....	51
GLQ5.....	51
GLR1.....	51
GLR10.....	5
GLR2.....	51
GLR3.....	51
GLR4.....	51
GLR5.....	51
GLR8.....	51
GMA2A.....	51
GMA4A.....	51
GMF1.....	51
GMF3.....	51
GMF3-2/10.....	51
GMF5.....	51
GMQ3.....	51
GMQ3-2/10.....	51
GMQ5.....	51
GP300APWV-HT.....	9
GS516.....	21
H012FL034D.....	34
H012FL034T.....	34
H012FL100D.....	34
H012FL100T.....	34
H0120D100D.....	34
H0120D100T.....	34
H0340D114D.....	34
H0340D114T.....	34
H038FL034T.....	34
H038FL100D.....	34
H0380D034T.....	34
H0380D100D.....	34
H058FL100D.....	34
H058FL100T.....	34
H0580D100D.....	34
H0580D100T.....	34
H0580D114D.....	34
H0780D114D.....	34
H0780D114T.....	34
H0780D134D.....	34
H1180D114D.....	34
H1180D114T.....	34

H1180D134D.....	34
H1180D134T.....	34
H1380D134D.....	34
H1380D134T.....	34
H-286.....	40
H-382.....	40
H-734.....	40
HACR10.....	51
HACR100.....	51
HACR15.....	51
HACR20.....	51
HACR25.....	51
HACR30.....	51
HACR35.....	51
HACR40.....	51
HACR45.....	51
HACR5.....	51
HACR50.....	51
HACR60.....	51
HACR61/4.....	51
HACR70.....	51
HACR80.....	51
HB34.....	61
HC12-100.....	55
HC12-25.....	55
HC12-50.....	55
HC14-100.....	55
HC14-25.....	55
HC14-50.....	55
HD32.....	58
HG-501A.....	60
HLR.....	52
HO-CO2.....	45
HP510-115.....	27
HP510-24.....	27
HRK.....	52
ISO05.....	58
KTK30.....	51
KTKR1.....	51
KTKR10.....	51
KTKR15.....	51
KTKR20.....	51
KTKR25.....	51
KTKR3.....	51
KTKR30.....	51
KTKR3-1/2.....	51
KTKR4.....	51
KTKR5.....	51
KTKR6.....	51

PART NUMBER INDEX

LD10.....	28
LDF357N-MPT.....	27
LDF359N-MPT.....	27
LW601.....	22
MDA10-R.....	51
MDA15-R.....	51
MDA20-R.....	51
MDL10-R.....	51
MDL1-2/10-R.....	51
MDL15-R.....	51
MDL1-R.....	51
MDL20-R.....	51
MDL2-R.....	51
MDL30-R.....	51
MDL3-R.....	51
MDL4-R.....	51
MDL5-R.....	51
MDL6-R.....	51
MDL7-R.....	51
MDL8-R.....	51
MG10.....	53
MG9.....	61
MR10.....	50
NS2-0000-03.....	78
NT02.....	18
P10101.....	6
PA036-0062-00.....	38
PB12-100.....	55
PB12-25.....	55
PB12-50.....	55
PB14-100.....	55
PB14-25.....	55
PB14-50.....	55
PB16.....	5
PC100.....	15
PC12.....	15
PC14.....	15
PCL DISPLAY.....	31
PCL12.....	31
PCL14.....	31
PCL38.....	31
PCL58.....	31
PD12-2.....	55
PG100.....	15
PG12.....	15
PG14.....	15
PL13.....	53
PL15.....	53
POP10.....	17

POP15.....	17
POP20.....	17
POP3.....	17
POP3Z.....	17
POP5.....	17
POP5Z.....	17
PP100.....	15
PP12.....	15
PP14.....	15
PRY13.....	22
PRY25.....	22
PRY31.....	22
PS261.....	19
PS830.....	19
PV012FLD.....	36
PV012FLLH.....	36
PV012FLRH.....	36
PV012SWD.....	36
PV012SWLH.....	36
PV012SWRH.....	36
PV014FLD.....	36
PV014FLLH.....	36
PV014FLRH.....	36
PV014SWD.....	36
PV014SWLH.....	36
PV014SWRH.....	36
PV038FLD.....	36
PV038FLLH.....	36
PV038FLRH.....	36
PV038SWD.....	36
PV038SWLH.....	36
PV038SWRH.....	36
PV058FLD.....	36
PV058FLLH.....	36
PV058FLRH.....	36
PV058SWLH.....	36
PV058SWRH.....	36
PY38.....	26
RC034-2.....	38
RC100-2.....	38
RC114-2.....	38
RC134-1.....	38
REN10.....	51
REN30.....	51
RH-10.....	26
RHB-82.....	49
RHB-82G.....	49
RS10.....	22

RS100.....	43
RS15.....	22
RS21.....	22
RS31.....	22
RS60.....	43
RS75.....	43
RSS-495-11.....	79
RSS-498-13.....	79
RV16561-350A.....	59
RV16561-350B.....	59
S10.....	51
S101.....	45
S15.....	51
S2.....	51
S20.....	51
S210.....	46
S25.....	51
S3.....	51
S30.....	51
S3-1/2.....	51
S3-2/10.....	51
S4.....	51
S5.....	51
S6-1/4.....	51
S8.....	51
SB30.....	42
SB72.....	42
SB72CD.....	42
SC1.....	51
SC10.....	51
SC15.....	51
SC2.....	51
SC20.....	51
SC25.....	51
SC3.....	51
SC30.....	51
SC35.....	51
SC4.....	51
SC40.....	51
SC45.....	51
SC5.....	51
SC50.....	51
SC6.....	51
SC60.....	45
SDT-25S.....	45
SE004.....	45
SE008.....	45

PART NUMBER INDEX

SE150.....	45	TTUL520.....	16	Z014T018.....	68
SE45.....	45	TX12A.....	60	Z016T020.....	68
SE90.....	45	TX12MA.....	60	Z018T022.....	68
SG11.....	50	TX3A.....	60	Z020T024.....	68
SL13.....	53	TX405.....	61	Z022T026.....	68
SL15.....	51	TX6088.....	60	Z024N028.....	68
SL15.....	53	TX9.....	61	Z026N030.....	68
SL20.....	51	UD12.....	59	Z028N032.....	68
SL25.....	51	UHS120.....	44	Z030N034.....	68
SL30.....	51	UHS24.....	44	Z032N036.....	68
SM-(COLOR).....	39	UK10.....	22	Z034N040.....	68
SSU.....	52	V0120D100D.....	35	Z036N042.....	68
SSY.....	52	V0120D100T.....	34	Z038N044.....	68
ST1236-31.....	46	V0380D034D.....	35	Z040N046.....	68
T10.....	51	V0380D034T.....	34	Z042N048.....	68
T1-1/4.....	51	V0580D100D.....	35	Z046N052.....	68
T12.....	51	V0580D100T.....	34	Z050N056.....	68
T15.....	51	V0780D114D.....	35	Z053N060.....	68
T1-6/10.....	51	V0780D114T.....	34	Z056N062.....	68
T2.....	51	V1180D114D.....	35	Z058N064.....	68
T2-1/2.....	51	V1180D114T.....	34	Z064N072.....	68
T20.....	51	V1380D134T.....	34	Z066N074.....	68
T25.....	51	VAB-10.....	67	Z080N054.....	68
T30.....	51	VAB-11.....	67	Z75850.....	58
T3-1/2.....	51	VAB-12.....	67		
T3-2/10.....	51	VAB-13SS.....	67		
T4.....	51	VAB-14SS.....	67		
T4-1/2.....	51	VAB-2.....	67		
T5.....	51	VAB-3.....	67		
T6-1/4.....	51	VAB-4.....	67		
T8.....	51	VAB-5.....	67		
TG007.....	56	VAB-6.....	67		
TGII.....	57	VAB-8.....	67		
TL15.....	51	VAB-9.....	67		
TL20.....	51	VC10.....	25		
TL25.....	51	V-HOL4.....	25		
TL30.....	51	VR-554.....	41		
TR034-6.....	38	WC05.....	42		
TR100-6.....	38	WC10.....	42		
TR10-12.....	38	WDRC 10.3.....	.6		
TR114-6.....	38	WDRC GAL.....	.6		
TR134-6.....	38	WL25.....	53		
TS32.....	57	WL50.....	53		
TS7000T.....	60	XHP222.....	.4		
TT260.....	16	Z004T008.....	68		
TT520.....	16	Z006t010.....	68		
TTUL260.....	16	Z008T012.....	68		
		Z010T014.....	68		
		Z012T016.....	68		