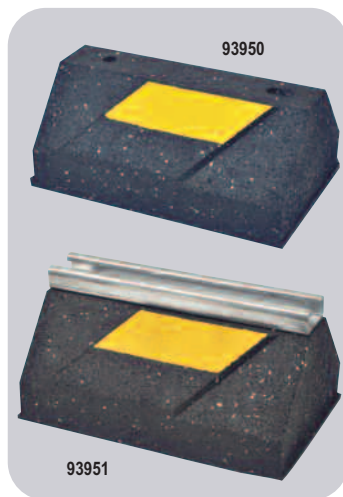


## Rooftop Support Systems

### Economy CX-Series

- Base only
- Material – 100% recycled rubber, UV resistant
- Maximum Load – 2 – 800 lbs.

CX Series rooftop support is designed as an economic alternative when a high load bearing is not required. They are perfect for supporting conduit or smaller pipe.



### C-Series

- Material – 100% recycled rubber, UV resistant
- Maximum Load – 750 lbs./ft

C Series channel support is designed for superior support of gas and refrigeration piping systems, cable tray, electrical conduit multiple lines, HVAC equipment and many other applications.

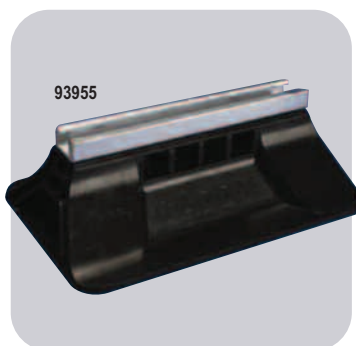
MARS NO.	DESCRIPTION	MARS PACK	CASE QTY.
93950	CX-Series 4" H x 6" W x 9.6" L	1	170
93951	C-Series 4 7/8" H x 6" W x 9.6" L	1	170

## Caddy® Pyramid ST Series Rooftop Support

Caddy® Pyramid ST Series Rooftop Support is roof-friendly, high-quality, versatile and durable for roofing applications.

### Features:

- Thermoplastic base is UV stabilized and weatherproof for long lasting
- Fixed-height mounting platform 4" off the roof surface and 10" of usable strut length, provides excellent load distribution
- Structurally engineered to support up to 1,000 lbs
- Hot-dipped galvanized finish
- Superior corrosion protection
- Supports the green building requirements, bases are made from recycled material and can contribute toward earning LEED credit



MARS NO.	MFG NO.	HEIGHT	LENGTH (1)	LENGTH (2)	WIDTH	SURFACE AREA	MAX. REC. LOAD
93955	RPS360400	4"	10"	12.5"	8"	94.3"	1,000 lbs.

\* Max. recommended load at 10.6 PSI roof loading. Contact project or roofing engineer for maximum allowable load on individual project roof system.

## MARS Front Open Pullout Disconnect Boxes - NEMA 3R

MARS offers both fusible and non-fusible single phase air conditioner disconnects. These units provide a disconnecting means which should be located within sight from and readily accessible from the air conditioning or refrigerating equipment. UL listed. MARS #83315 is also CUL listed



MARS NO.	DESCRIPTION	CASE QTY.
83315	60 amp non-fused, single phase	6
83316	30 amp fused, single phase	6
83317	60 amp fused, single phase	6
83396	Compact 30 amp fused, single phase	6
83335	Generic brand 60 amp non-fused, single phase	6

## MARS Side Open Pullout Disconnect Boxes - NEMA 3R

The MARS Side Open Disconnect Boxes are contractor friendly and feature a unique side opening door, allowing easy access to the work area. The powder coated UV rated finish provides superior esthetics and greater longevity. The patented "finger safe" pullout section prevents accidental contact with electrodes. Easy to remove knockouts and a secure locking mechanism are also featured. This Pullout Disconnect Box is the ideal choice for the busy contractor.

MARS 80328 features an on/off switch so there are no pullout handles to be lost.

### Specifications:

- Single phase, 240V
- 10,000 amp rated
- NEMA 3R, rainproof
- UL & CUL rated



MARS NO.	DESCRIPTION	STD. PACK	CASE QTY.
80315	60 amp non-fused	6	6
80316	30 amp fused	6	6
80317	60 amp fused	6	6
80328	60 amp fused – Switch Disconnect	6	6

SERVICE & INSTALLATION