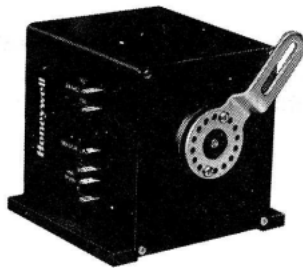


Honeywell

M7405, M7415, M8405, M8415 DAMPER ACTUATORS



M7415

M7405, M7415, M8405 and M8415 25 lb.-in. SPRING-RETURN DAMPER ACTUATORS PROVIDE 2-POSITION, 3-POSITION OR MODULATING CONTROL OF ECONOMIZER SYSTEMS, VENTILATION DAMPERS AND COMBUSTION AIR DAMPERS USED IN RESIDENTIAL OR COMMERCIAL HVAC EQUIPMENT.

□ M7405 □ M7415 □ M8405 □ M8415

- M7405 provides modulating control of economizer dampers from Direct Digital Control Signal. Use with Programmable Commercial Thermostats, either the T7400/W7401 Standard or T7400/W7411 Heat Pump System.
- M7415 provides modulating control of economizer dampers from a thermistor mixed-air or discharge sensor to maintain 56 F air temperature.
- M8405 provides 3-position control: closed, adjustable mid-position, open.
- M8415 provides 2-position control: open, closed.
- Quiet, high efficiency drive motor.
- High impact, glass-fiber reinforced plastic case is rugged, lightweight, corrosion resistant.

SPECIFICATIONS

MODELS:

Model Number	Voltage (Vac) (50/60 Hz)	Power (VA)		Timing (sec) ^a	Stroke (Deg.)	Torque	
		(drive)	(hold)			(lb.-in.)	(N·m)
M7405A ^{a,b}	24	8	5	90	90	25	2.8
M7415A ^{a,b}	24	8	5	90	90	25	2.8
M7415B ^{a,b,f}	24	8	5	90	90	25	2.8
M8405A ^{b,c}	24	7	3	90	90	25	2.8
M8415A ^{b,d}	24	7	3	90	90	25	2.8

^a Modulating.

^b Spring-return.

^c 3-position, with field-adjustable minimum position control.

^d 2-position, 2-wire, with field-adjustable auxiliary switch; adjustable from 5° to 65° of shaft rotation.

^e Timing with 60 Hz power.

^f Reverse rotation, power and spring.

AMBIENT TEMPERATURE RATING; -25 F to +125 F [-32 C to +52C].

DIMENSIONS: See Fig. 1.

TERMINAL CONNECTIONS: 1/4 in. [6 mm] male quick-connect terminals mounted on motor. Terminal arrangement is dependent on model of motor.

SHAFT: Single-ended drive shaft with crank arm supplied.

UNDERWRITERS LABORATORIES INC. FLAMMABILITY RATING: UL94-5V.

UNDERWRITERS LABORATORIES INC. Component Recognized; File No. E4436, Guide No. XAPX2, Vol. 9, Section 1, 7-25-83.

MOTOR ROTATION: Normally closed electrically and mechanically. Closed position is limit of clockwise rotation; open position is limit of counterclockwise rotation as viewed from shaft end of motor. These motors are shipped with shaft in closed position. See Fig. 2 for crank arm rotation limits.

AUXILIARY SWITCH RATING (M8415A only): 24 Vac, 20 VA inrush, 10 VA run (R8222 or equiv. load).

ACCESSORIES:

4074EHB Screw Terminal Adapter—converts quick-connect terminals to screw terminals. Adapter can be used with or without 7640QF Terminal Enclosure.

7640QF Terminal Enclosure—provides wiring enclosure for electrical terminal connections. Enclosure can be used with or without 4074EHB Screw Terminal Adapter. Bag assembly includes: Terminal housing, cover plate and mounting screws.

Q709A Actuator Mounted Minimum Position Potentiometer—permits adjustment of minimum damper position, provides quick connect terminals for remote minimum position potentiometer connection for override.

S963B1136 Minimum Position Potentiometer—permits remote adjustment of minimum damper position; can be used with or without Q709A actuator mounted potentiometer.

C7150B1004 Mixed or Discharge Air Thermistor Sensor—use with M7415A proportioning actuator.

4074EGR Crank Arm Assembly.

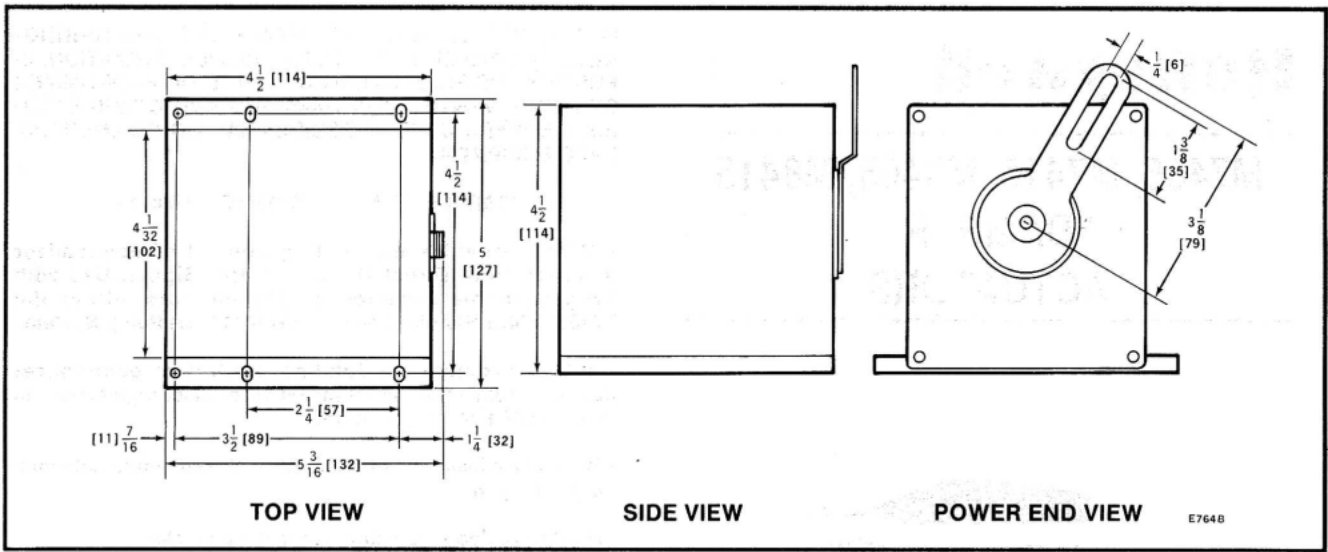


Fig. 1—M7405, M7415, M8405, M8415 MOUNTING DIMENSIONS IN in. [mm IN BRACKETS].