

PROJECT: _____	UNIT TAG: _____	QUANTITY: _____
REPRESENTATIVE: _____	TYPE OF SERVICE: _____	DATE: _____
ENGINEER: _____	SUBMITTED BY: _____	DATE: _____
CONTRACTOR: _____	APPROVED BY: _____	DATE: _____
	ORDER NO.: _____	DATE: _____

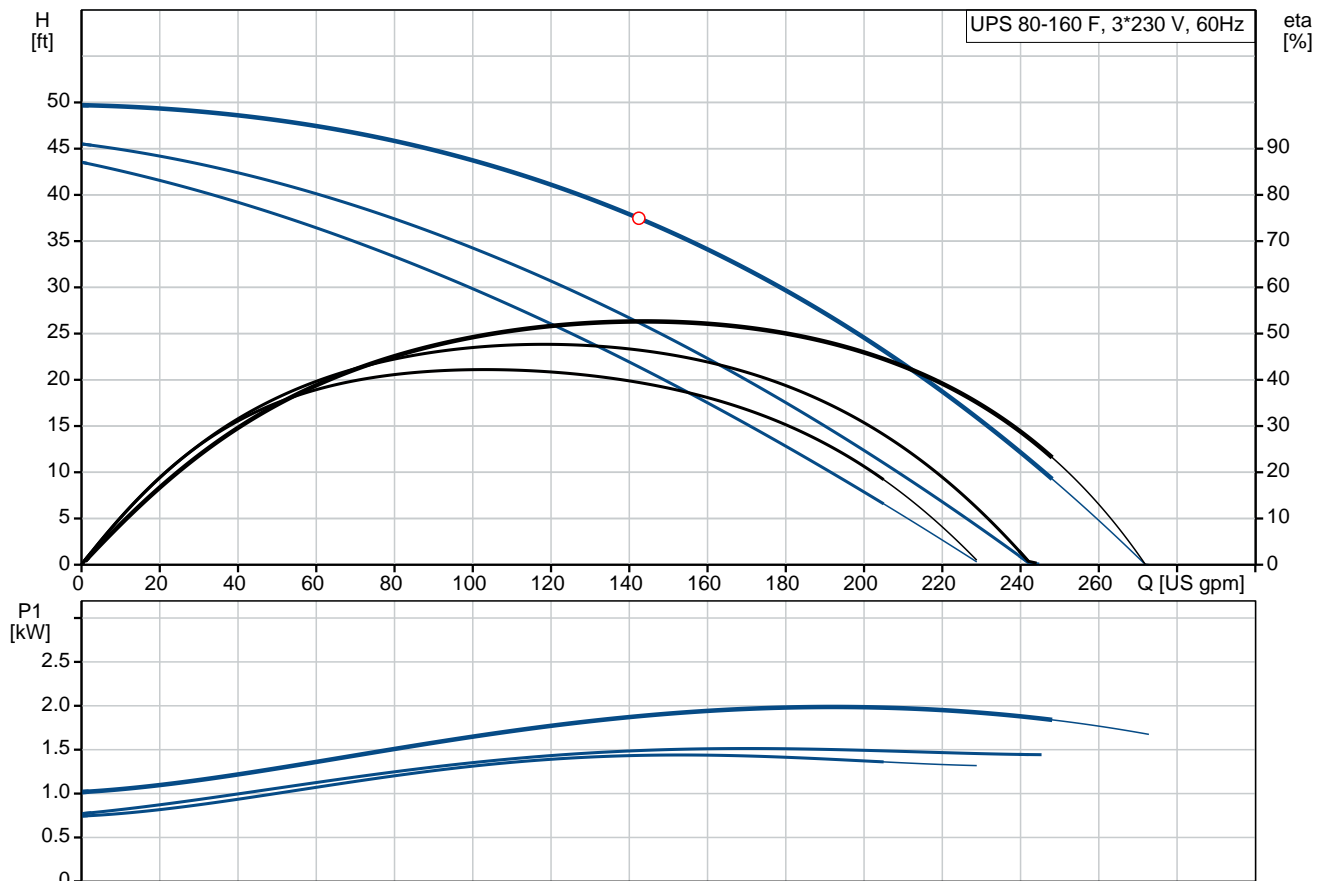


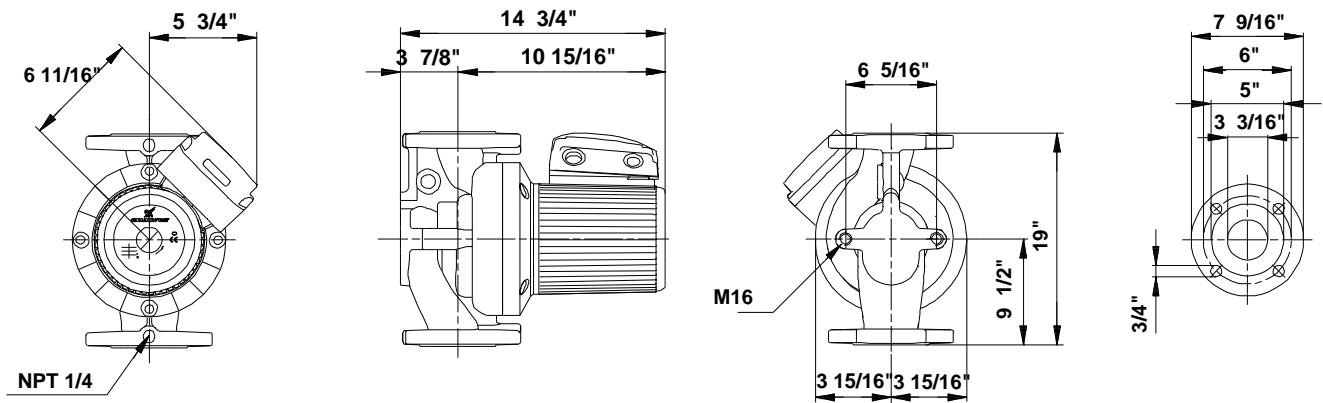
### UPS 80-160 F

Circulator pumps

Product photo could vary from the actual product

Conditions of Service	Pump Data	Motor Data
Flow: _____	Maximum operating pressure: 145 psi	Max. power input: 2050 W
Head: _____	Liquid temperature range: 14 .. 248 °F	Rated voltage: 208-230 V
Efficiency: _____	Maximum ambient temperature: 104 °F	Main frequency: 60 Hz
Liquid: Water	Approvals: CUL	Enclosure class: X4D
Temperature: 140 °F	Type of connection: F	Insulation class: H
NPSH required: ft	Flange standard: ANSI	Motor protection: CONTACT
Viscosity: _____	Pipe connection: GF 80	Thermal protection: external
Specific Gravity: 0.985	Product number: 96402920	





**Materials:**

Pump housing: Cast iron  
EN-JL1040  
ASTM 35 B - 40 B

Impeller: Stainless steel  
DIN W.-Nr. 1.4301  
AISI 304

## Tender Text



Product photo could vary from the actual product

Product No.: [96402920](#)

### UPS 80-160 F

The pump is of the canned rotor type, i.e. pump and motor form an integral unit without shaft seal and with only two gaskets for sealing. The bearings are lubricated by the pumped liquid.

In order to avoid problems in connection with disposal, great importance has been attached to using as few different materials as possible.

The pump is characterized by:

- \* 3 speed motor.
- \* Ceramic radial bearings.
- \* Carbon axial bearing.
- \* Stainless steel rotor can, bearing plate

and rotor cladding.

- \* Aluminium alloy stator housing.
- \* Cast iron pump housing.
- \* Stator with built-in thermal switch.

The motor is a 3-phase motor.

The pump is supplied with a standard module in the terminal box.

The standard module is to be connected to the mains supply via external contactor.

### Controls:

Relay: without relay

### Liquid:

Pumped liquid: Water  
Liquid temperature range: 14 .. 248 °F  
Liquid temperature during operation: 140 °F  
Density: 61.35 lb/ft<sup>3</sup>

### Technical:

Approvals on nameplate: CUL

### Materials:

Pump housing: Cast iron  
EN-JL1040  
ASTM 35 B - 40 B  
Impeller: Stainless steel  
DIN W.-Nr. 1.4301

AISI 304

**Installation:**


Range of ambient temperature: 32 .. 104 °F  
Maximum operating pressure: 145 psi  
Flange standard: ANSI  
Type of connection: F  
Pipe connection: GF 80  
Pressure stage: 145 psi  
Port-to-port length: 19 in

**Electrical data:**

Power input in speed 1: 1500 W  
Power input in speed 2: 1550 W  
Max. power input: 2050 W  
Main frequency: 60 Hz  
Rated voltage: 3 x 208-230 V  
Current in speed 1: 4.05 A  
Current in speed 2: 4.2 A  
Current in speed 3: 6.35 A  
Cos phi in speed 1: 0,93  
Cos phi in speed 2: 0,93  
Cos phi: 0,81  
Enclosure class (IEC 34-5): X4D  
Insulation class (IEC 85): H  
Winding resistance: 7.8 - 10.2 ohm

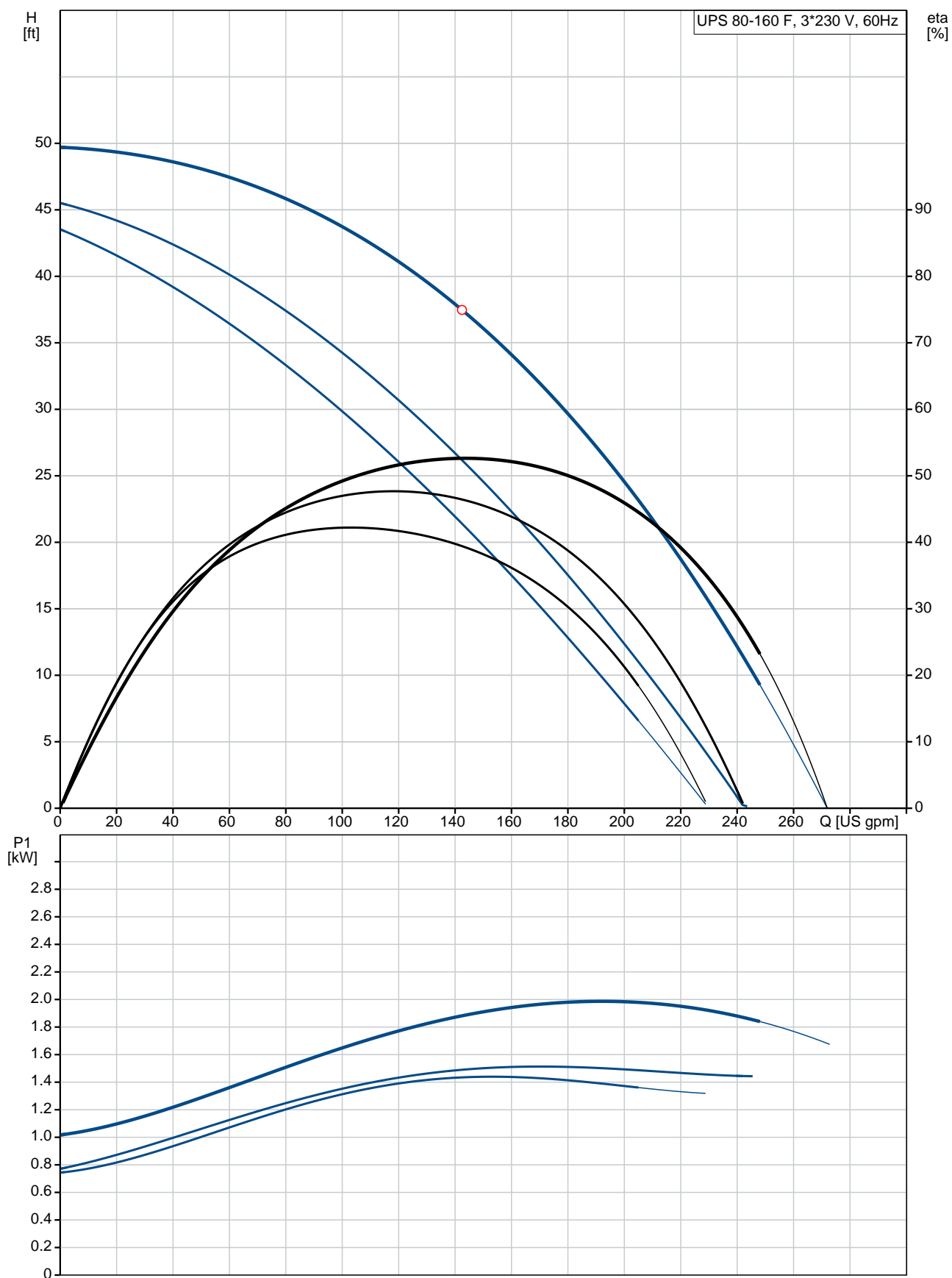
**Others:**

Net weight: 91.9 lb  
Gross weight: 97.2 lb  
Shipping volume: 3.46 ft³

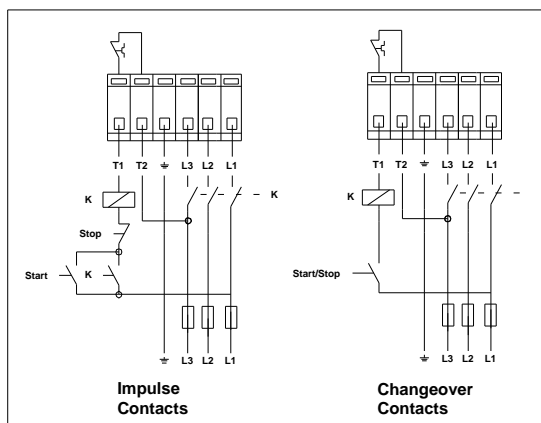
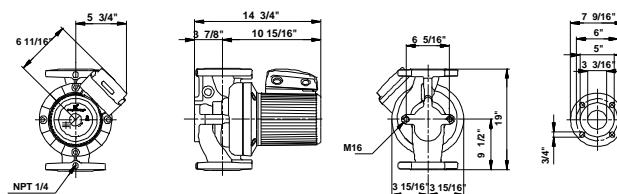
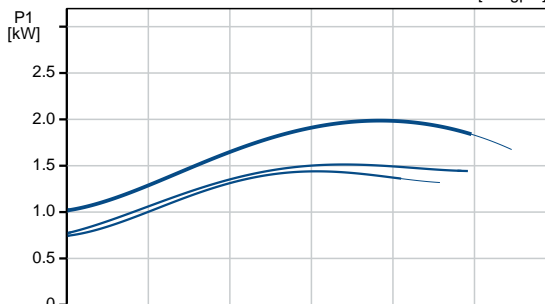
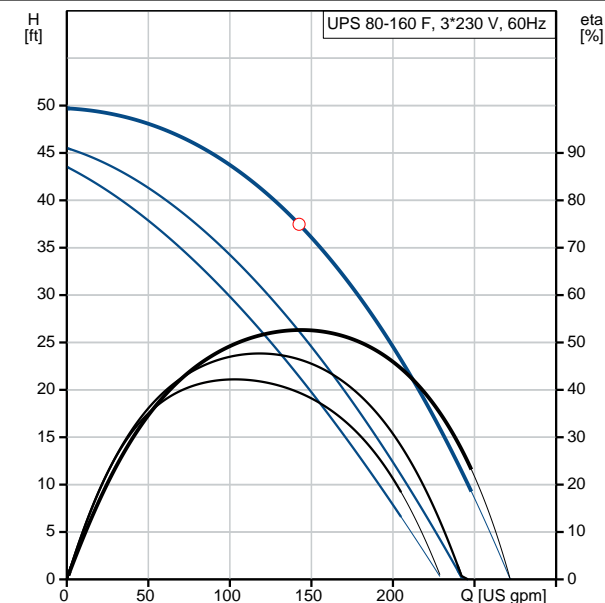
Position	Count	Description
	1	<p><b>UPS 80-160 F</b></p>  <p>Product photo could vary from the actual product</p> <p>Product No.: <a href="#">96402920</a></p> <p>The pump is of the canned rotor type, i.e. pump and motor form an integral unit without shaft seal and with only two gaskets for sealing. The bearings are lubricated by the pumped liquid.</p> <p>In order to avoid problems in connection with disposal, great importance has been attached to using as few different materials as possible.</p> <p>The pump is characterized by:</p> <ul style="list-style-type: none"> <li>* 3 speed motor.</li> <li>* Ceramic radial bearings.</li> <li>* Carbon axial bearing.</li> <li>* Stainless steel rotor can, bearing plate and rotor cladding.</li> <li>* Aluminium alloy stator housing.</li> <li>* Cast iron pump housing.</li> <li>* Stator with built-in thermal switch.</li> </ul> <p>The motor is a 3-phase motor.</p> <p>The pump is supplied with a standard module in the terminal box. The standard module is to be connected to the mains supply via external contactor.</p> <p><b>Controls:</b></p> <p>Relay: without relay</p> <p><b>Liquid:</b></p> <p>Pumped liquid: Water</p> <p>Liquid temperature range: 14 .. 248 °F</p> <p>Liquid temperature during operation: 140 °F</p> <p>Density: 61.35 lb/ft³</p> <p><b>Technical:</b></p> <p>Approvals on nameplate: CUL</p> <p><b>Materials:</b></p> <p>Pump housing: Cast iron EN-JL1040 ASTM 35 B - 40 B</p> <p>Impeller: Stainless steel DIN W.-Nr. 1.4301 AISI 304</p>

Position	Count	Description
		<p><b>Installation:</b></p> <p>Range of ambient temperature: 32 .. 104 °F</p> <p>Maximum operating pressure: 145 psi</p> <p>Flange standard: ANSI</p> <p>Type of connection: F</p> <p>Pipe connection: GF 80</p> <p>Pressure stage: 145 psi</p> <p>Port-to-port length: 19 in</p> <p><b>Electrical data:</b></p> <p>Power input in speed 1: 1500 W</p> <p>Power input in speed 2: 1550 W</p> <p>Max. power input: 2050 W</p> <p>Main frequency: 60 Hz</p> <p>Rated voltage: 3 x 208-230 V</p> <p>Current in speed 1: 4.05 A</p> <p>Current in speed 2: 4.2 A</p> <p>Current in speed 3: 6.35 A</p> <p>Cos phi in speed 1: 0,93</p> <p>Cos phi in speed 2: 0,93</p> <p>Cos phi: 0,81</p> <p>Enclosure class (IEC 34-5): X4D</p> <p>Insulation class (IEC 85): H</p> <p>Winding resistance: 7.8 - 10.2 ohm</p> <p><b>Others:</b></p> <p>Net weight: 91.9 lb</p> <p>Gross weight: 97.2 lb</p> <p>Shipping volume: 3.46 ft³</p>

## 96402920 UPS 80-160 F 60 Hz



Description	Value
<b>General information:</b>	
Product name:	UPS 80-160 F
Product No.:	96402920
EAN:	5700390685973
<b>Technical:</b>	
Speed Number:	3
Head max:	52.5 ft
Approvals on nameplate:	CUL
Model:	C
<b>Materials:</b>	
Pump housing:	Cast iron
	EN-JL1040
	ASTM 35 B - 40 B
Impeller:	Stainless steel
	DIN W.-Nr. 1.4301
	AISI 304
<b>Installation:</b>	
Range of ambient temperature:	32 .. 104 °F
Maximum operating pressure:	145 psi
Flange standard:	ANSI
Type of connection:	F
Pipe connection:	GF 80
Pressure stage:	145 psi
Port-to-port length:	19 in
<b>Liquid:</b>	
Pumped liquid:	Water
Liquid temperature range:	14 .. 248 °F
Liquid temperature during operation:	140 °F
Density:	61.35 lb/ft³
<b>Electrical data:</b>	
Power input in speed 1:	1500 W
Power input in speed 2:	1550 W
Max. power input:	2050 W
Main frequency:	60 Hz
Rated voltage:	3 x 208-230 V
Current in speed 1:	4.05 A
Current in speed 2:	4.2 A
Current in speed 3:	6.35 A
Cos phi in speed 1:	0,93
Cos phi in speed 2:	0,93
Cos phi:	0,81
Enclosure class (IEC 34-5):	X4D
Insulation class (IEC 85):	H
Motor protection:	CONTACT
Thermal protec:	external
Winding resistance:	7.8 - 10.2 ohm
<b>Controls:</b>	
Relay:	without relay
Pos term box:	1.30H
<b>Others:</b>	
Net weight:	91.9 lb
Gross weight:	97.2 lb







Company name:

Created by:

Phone:

Date:

2/21/2018

Description	Value
Shipping volume:	3.46 ft³
Sales region:	Namreg



Company name:

Created by:

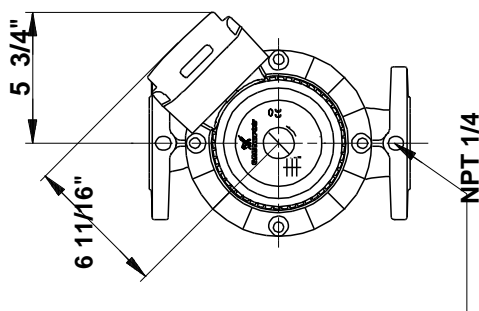
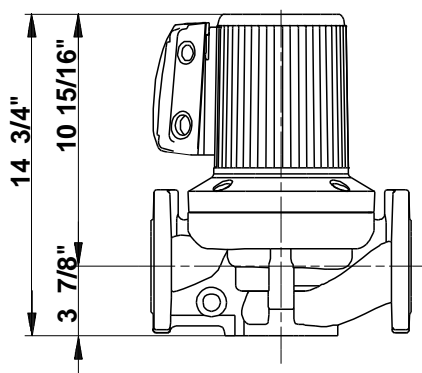
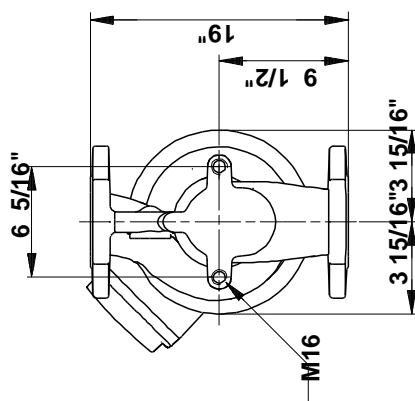
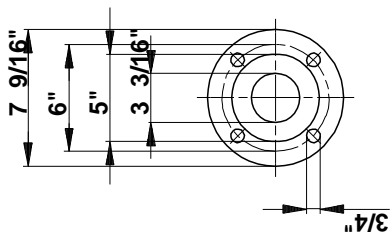
Phone:

Date:

2/21/2018

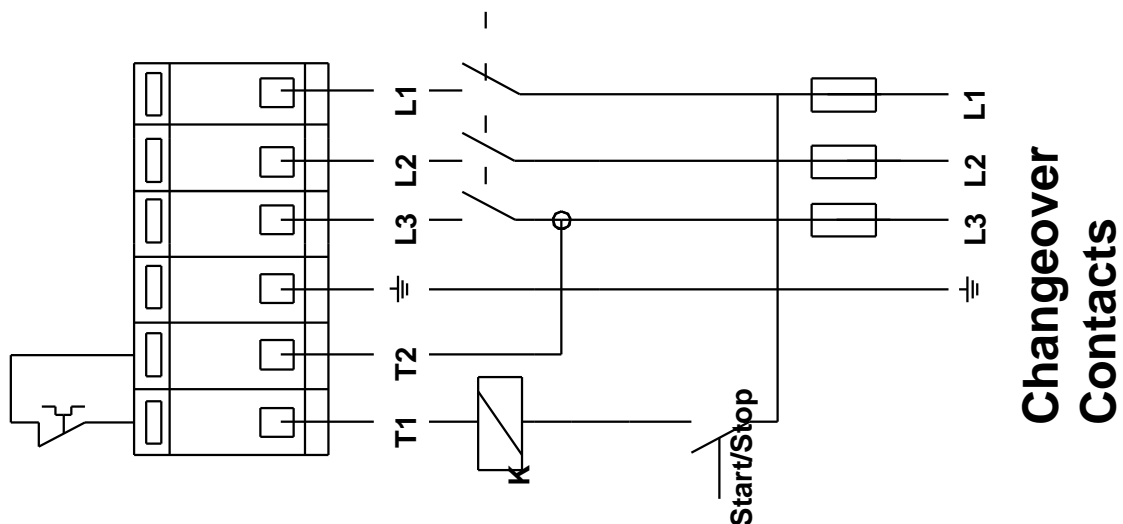
**96402920 UPS 80-160 F 60 Hz**

## 96402920 UPS 80-160 F 60 Hz

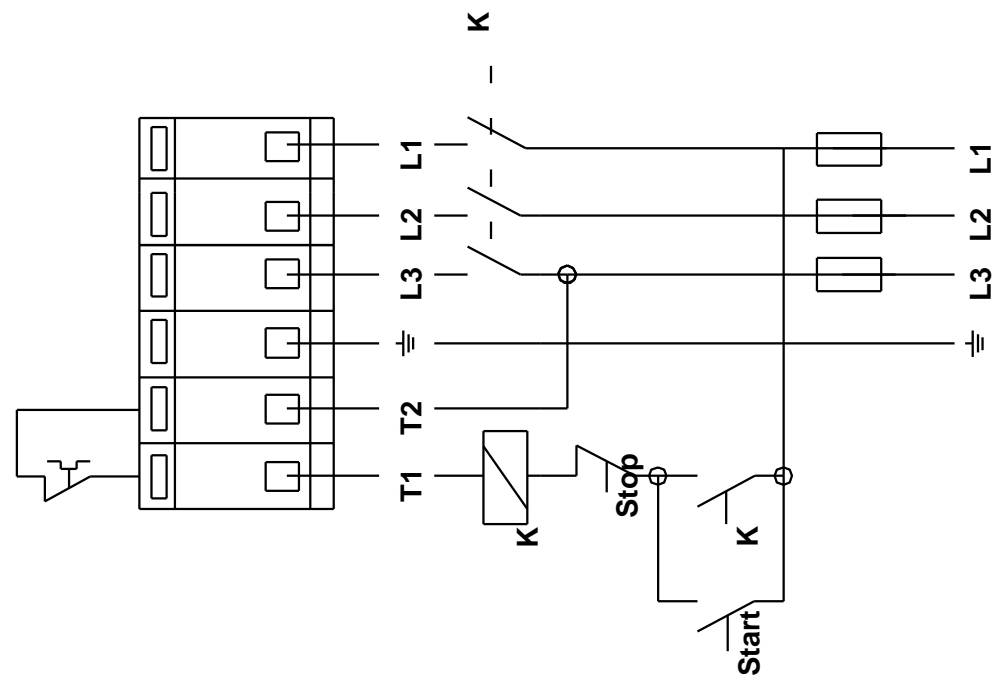


Note! All units are in [mm] unless otherwise stated.  
Disclaimer: This simplified dimensional drawing does not show all details.

## 96402920 UPS 80-160 F 60 Hz



**Changeover  
Contacts**



**Impulse  
Contacts**



Company name:

Created by:

Phone:

Date:

2/21/2018

---

**Order Data:**

Product name: UPS 80-160 F

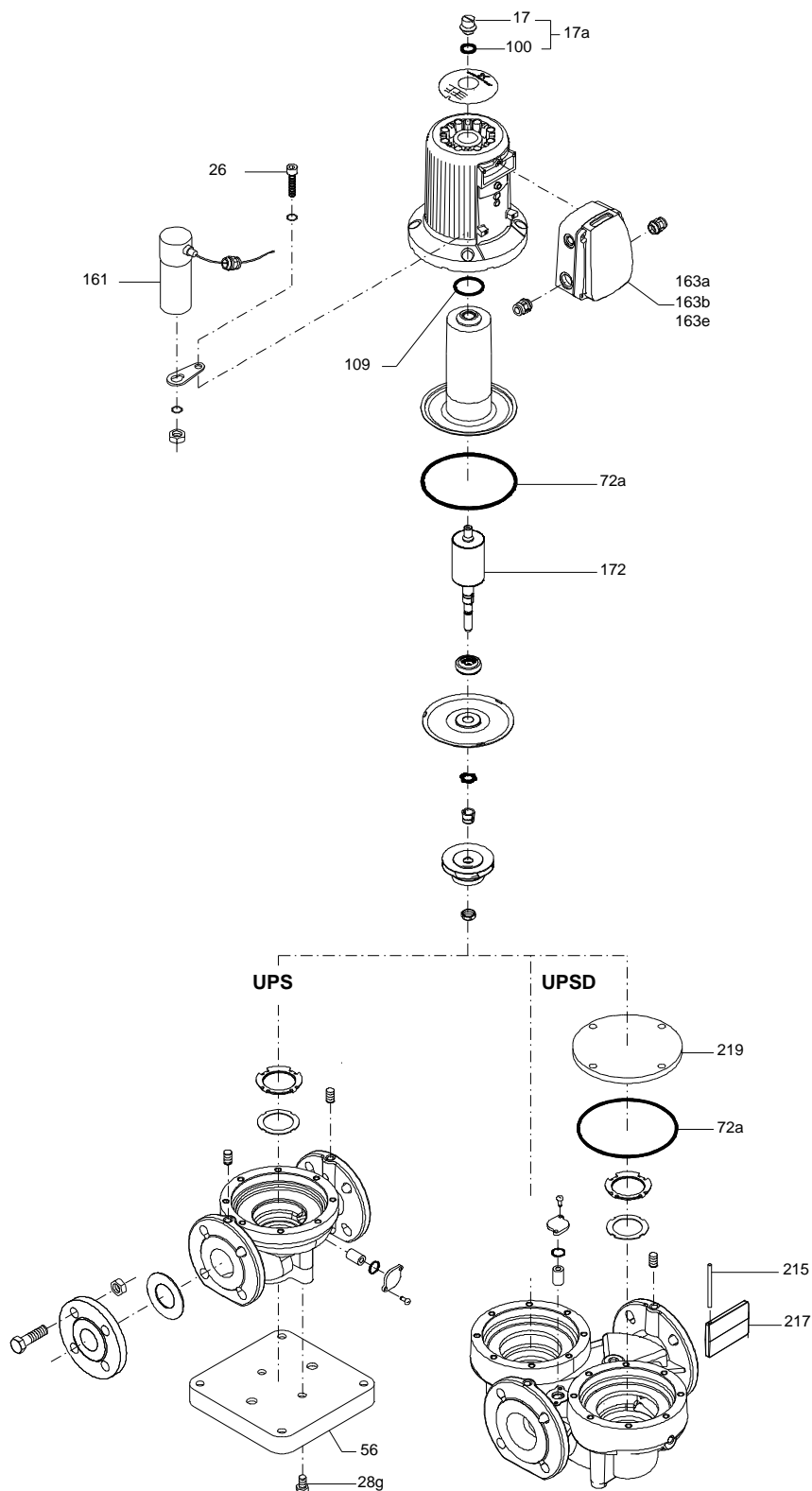
Amount: 1

Product No.: 96402920

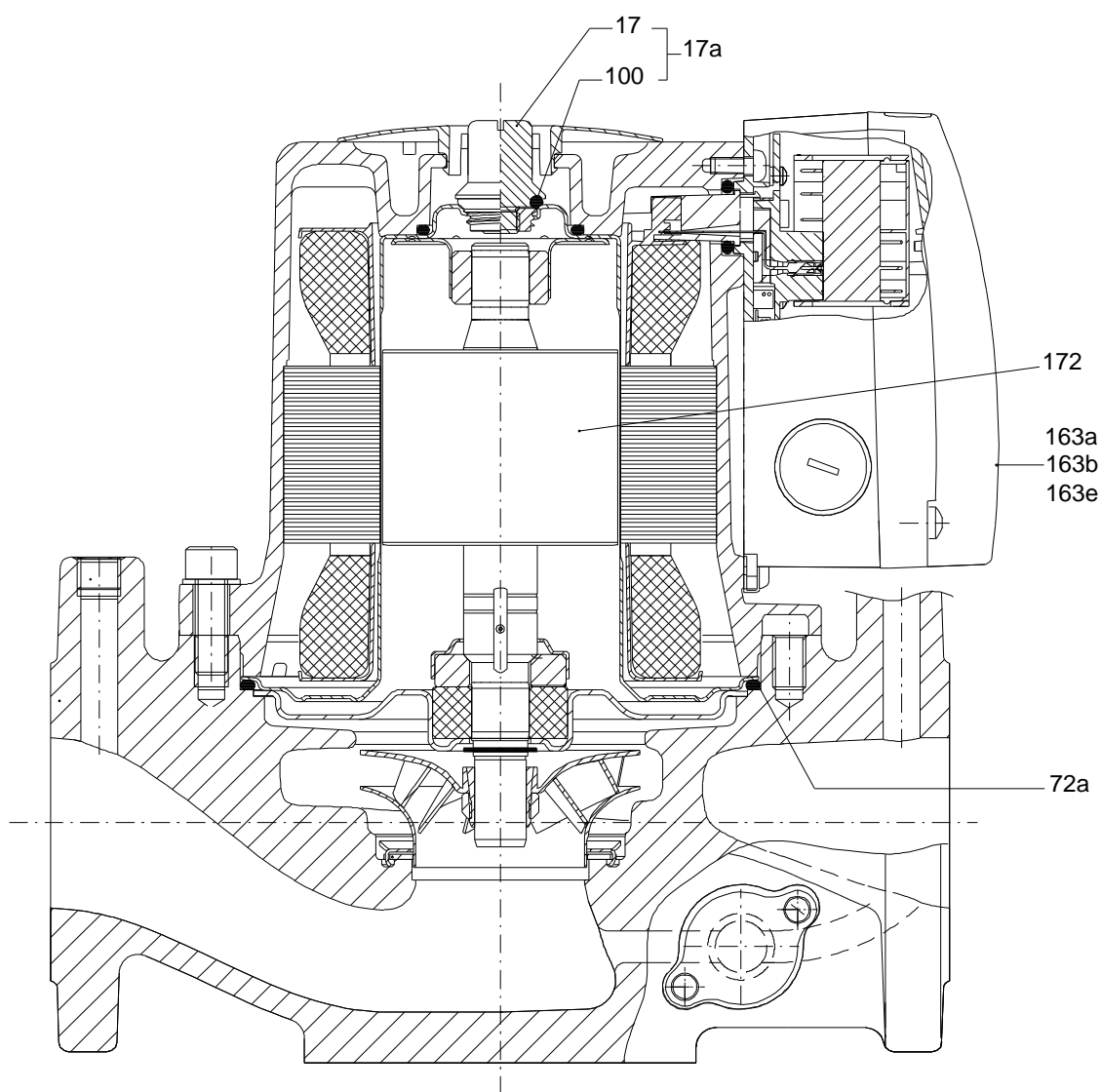
Total: Price on request

---

## Exploded view (TM010410 3905)



## Sectional drawing (TM010371 3905)





Company name:

Created by:

Phone:

Date:

2/21/2018

**Parts list UPS 80-160 F, Prod number 96402920**

**Valid from 1.4.1995 (9513)**

Position	Description	Annotation	Classification data	Part No.	Count	Unit
163a	Terminal box cpl.		Designation: WITH RELAY MODULE		1	pcs
163b	Terminal box cpl.		Designation: WITH STANDARD MODULE		1	pcs
163e	Terminal box cpl.		Designation: W. PROTECTION MODULE		1	pcs