

## Resources

### Marketing

- » Sign up to be listed as an Arzel zoning professional and homeowners in your service area will know you are an Arzel zoning expert.
- » Customized literature available for direct mail campaigns, sales calls, and trade shows.
- » Incentive programs and promotions available to contractors to help increase sales.

### Warranty

- » All Arzel zoning systems are covered by a Lifetime Parts warranty.
- » Simply register the system within 90 days of installation at [www.arzel.com/warrantyreg](http://www.arzel.com/warrantyreg).

### Tech Support

- » Contact Arzel® at 800-611-8312 Monday through Friday 8 am to 5 pm with any technical questions or issues.
- » Text “Arzelsupport” to 69302 from 5 pm to 9 pm and a tech will call you back as soon as possible.
- » Visit [www.arzelzoning.com](http://www.arzelzoning.com) anytime for more product information, videos, and other technical resources.

# Zoning Product Guide

# Zoning Overview



When a home or business is zoned, rooms are grouped together according to usage and conditioning needs.

A zoning system usually consists of a control panel, dampers, and a temperature controller for each zone.

Dampers are installed within the duct work and control the air flow to each zone. The zoning control panel is tied into the structure's heating and/or cooling system and when a zone calls for either heating or cooling it opens and/or closes the appropriate dampers.

# Training

## Webinars

Arzel Zoning offers free, interactive webinars covering the technical aspects of zoning and its products and how to best promote our systems. Call 800-611-8312 or e-mail [marketing@arzelzoning.com](mailto:marketing@arzelzoning.com) to register for a webinar and schedule it when it is most convenient for you and your team.

### ~ General Sales & Theory ~

**Recognizing Zoning Jobs**  
Approximate time: 20 minutes

**Zoning Line Comparison**  
Approximate time: 30 minutes

**Marketing Support**  
Approximate time: 20 minutes

**Zoning Dynamics & Bypass Theory**  
Approximate time: 45 minutes

### ~ Product ~

**HeatPumPro**  
Approximate time: 20 - 45 minutes

**GTPro**  
Approximate time: 20 - 45 minutes

**Evergreen Zoning**  
Approximate time: 45 minutes

**CoolMizer**  
Approximate time: 20 minutes

## Comfort College

Comfort College is designed as a lecture-lab course in which topics are presented by the instructors in a classroom setting and examined in lab exercises. Each session is eligible for NATE continuing education credit hours.

### ~ Comfort College Topics ~

- Recognizing zoning opportunities
- Product familiarization
- Zoning system design
- Proper installation techniques
- Sales and marketing concepts

Visit [www.arzelzoning.com](http://www.arzelzoning.com)  
or call 800-611-8312  
to register today!

## Tools



**TOOL-KIT**



**TOOL-SNKIT**

Item ID	Item Description
EZYHUB	Air Distribution Reservoir
TOOL-AIRFLOW	Airflow Indicator
DUCTFINDER	Duct Finder
TOOL-GUN	Stapler
TOOL-STPLS	Staples
TOOL-KIT	Tool Kit
TOOL-SNKIT	90° Right & Left Snips

## Replacement Parts

### Circuit Boards

Item ID	Item Description	Item ID	Item Description
PCB-00202	202 MPS	PCB-HPP02	HeatPumPro 2 Zone
PCB-00203	203 MPS	PCB-HPP03	HeatPumPro 3 Zone
PCB-02002	AirBoss 2 Zone	PCB-HPP04	HeatPumPro 4 Zone
PCB-02003	AirBoss 3 Zone	PCB-GTP02	GTPro 2 Zone
PCB-02004	AirBoss 4 Zone	PCB-GTP03	GTPro 3 Zone
PCB-02006	AirBoss 6 Zone	PCB-BTP04	GTPro 4 Zone
PCB-02008	AirBoss 8 Zone	PCB-ZVIBD	Zone Valve Control

### Miscellaneous

Item ID	Item Description	Item ID	Item Description
SEN-UPS12	LAT Sensor (AirBoss)	PAN-SOLO5	24 vdc solenoid (HeatPumPro)
SEN-RESPRO	LAT/OAT Sensor (HPP)	BYP-SWICH	Pressure Switch
SENS-COOLM	CoolMizer Sensor	TRANS-40VARS	24VAC 40VA (2-4 zone)
PMP-PUMP1	Panel Pump	TRANS-100VA	24VAC 100VA Transformer (6-8 zone)
PAN-SOLO4	24 vdc solenoid (MPS, AirBoss)	MOD-BYPAS	Modulating Bypass Transmitter
PAN-FUSE2	MPS Panel fuse (2 amp) QTY 5		

## The Arzel® Difference

For over 30 years Arzel Zoning has been manufacturing industry-leading zoning systems that offer the quietest, most efficient, and most reliable solutions to the comfort issues people face in their home or office everyday. Arzel's systems are also the easiest to install, which means it saves contractors time and labor cost. Arzel offers the sales, marketing, and technical support needed to make selling and installing its systems the only option.

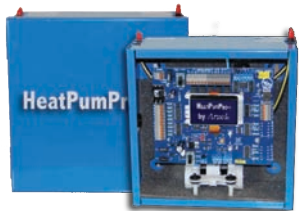
## How to Sell Arzel®

- 1. Get the Home or Business Owner's Input** - No one knows the usage patterns better than the home or business owner.
- 2. Design Zones That Make Sense** - Group rooms together on the same floor with the same usage patterns.
- 3. Select the Best Zoning System for the Job** - Decide whether installing trunk dampers or branch dampers would be best and select a control panel that best fits the equipment.
- 4. Minimize Bypass** - Keeping the bypass to a minimum and taking advantage of the elevated static pressure will increase the air flow and the BTU delivery to the zone.
- 5. Educate the Home or Business Owner** - It is very important to inform the home or business owner what to expect from their system and how to operate the thermostat for each zone. Taking the time to educate the home or business owner adds value to the system for him because it will help save money on utility expenses.

# Control Panels

## HeatPumPro

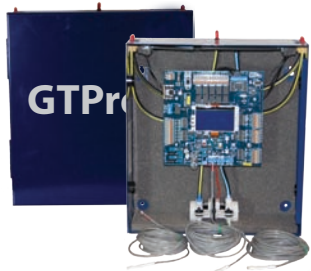
HeatPumPro offers the latest in zoning control technology with its built in staging and software-based programming. While the HeatPumPro was originally designed specifically for heat pump applications, the flexibility of the software has made it possible to use it with other heating and cooling systems, such as a heat pump with electric backup, conventional, and dual fuel.



Item ID	Item Description
PAN-HPP02	HeatPumPro 2-zone panel
PAN-HPP03	HeatPumPro 3-zone panel
PAN-HPP04	HeatPumPro 4-zone panel

## GTPro

GTPro offers customized comfort control while maximizing the efficiency of geothermal units. It provides built-in controls to several different staging parameters, allowing for more precise management to save time, money, and energy. It is extremely user-friendly and allows for software updates via a USB drive.



Item ID	Item Description
PAN-GTP02	GTPro 2-zone panel
PAN-GTP03	GTPro 3-zone panel
PAN-GTP04	GTPro 4-zone panel

# Accessories

## Tubing

Item ID	Item Description	Item ID	Item Description
PVC-BLUE	Black w/ Blue stripe 200 ft.	PLEN-BLUE	Plenum Tubing 250 ft.
PVC-GREEN	Black w/ Green stripe 200 ft.	PLEN-GREEN	Plenum Tubing 250 ft.
PVC-ORANGE	Black w/ Orange stripe 200 ft.	PLEN-ORANGE	Plenum Tubing 250 ft.
PVC-PINK	Black w/ Pink stripe 200 ft.	PLEN-PINK	Plenum Tubing 250 ft.
PVC-PURPLE	Black w/ Purple stripe 200 ft.	PLEN-PURPLE	Plenum Tubing 250 ft.
PVC-RED	Black w/ Red stripe 200 ft.	PLEN-RED	Plenum Tubing 250 ft.
PVC-WHITE	Black w/ White stripe 200 ft.	PLEN-WHITE	Plenum Tubing 250 ft.
PVC-YELLOW	Black w/ Yellow stripe 200 ft.	PLEN-YELLOW	Plenum Tubing 250 ft.

## Fittings



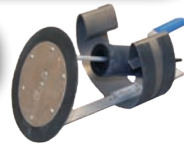
Item ID	Item Description
FIT-TC025	Black Coupling 4mm Barb QTY. 25
FIT-TE025	Black Elbow 4mm Barb QTY. 25
FIT-TP025	Black Plug 4mm Barb QTY. 25
FIT-TT025	Black Tee 4mm Barb QTY. 25

## Controls

Item ID	Item Description
PAN-ALONE	Alone Zone Panel
PAN-ZVICTRL	Zone Valve Control Panel (complete)
PAN-INTFAC	Zone Interface Panel (Harmony, Water Furnace)
PAN-UNIPAS	Universal ModuPass Panel

# Dampers

## Inserta



The Inserta Damper features a spring loaded belly band that holds it firmly in any type of round duct. This makes it a good fit for applications in which the main trunk is accessible but the take-off runs are not.

Item ID	Desc.	Item ID	Desc.
INSRT-5	5"	INSRT-7	7"
INSRT-6	6"	INSRT-8	8"

## RegiDamper



Item ID	Desc.	Item ID	Desc.
REG-2X10	2" x 10"	REG-4X12	4" x 12"
REG-2X12	2" x 12"	REG-6X10	6" x 10"
REG-4X10	4" x 10"	REG-6X12	6" x 12"

The RegiDamper is the answer when there is no access to the duct. It is installed in the boot directly beneath the floor register.

## Bypass



MOD-BYP12

The ModuPass system works with variable speed motors and constantly monitors the static pressure in the trunk and adjusts to allow the prescribed amount of bypass air.

Item ID	Desc.	Item ID	Desc.
MOD-DMP08	8" Damper Only	MOD-BYP08	8" Modulating Bypass Kit
MOD-DMP10	10" Damper Only	MOD-BYP10	10" Modulating Bypass Kit
MOD-DMP12	12" Damper Only	MOD-BYP12	12" Modulating Bypass Kit
MOD-DMP14	14" Damper Only	MOD-BYP14	14" Modulating Bypass Kit
MOD-FDKIT	Mod Bypass Kit (Field Install)		

## EzyFit



Item ID	Desc.
STK-EZFT5	5"
STK-EZFT6	6"
STK-EZFT7	7"

The EzyFit Damper has a compact folded design which allows you to slip the damper through the register and once installed magnets set it firmly in place.

# Control Panels

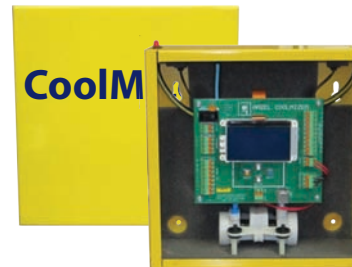
## AirBoss

AirBoss is perfect for larger residences or light commercial applications and can control up to eight zones. It has the flexibility to control single or multi-stage equipment, including heat pumps.



Item ID	Item Description
PAN-AB002	AirBoss 2-zone panel
PAN-AB003	AirBoss 3-zone panel
PAN-AB004	AirBoss 4-zone panel
PAN-AB006	AirBoss 6-zone panel
PAN-AB008	AirBoss 8-zone panel

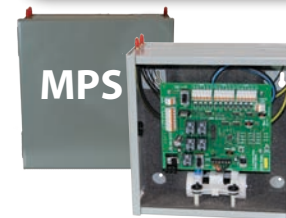
## CoolMizer



CoolMizer is a stand-alone, add-on economizer for split-system, forced air, heating and/or cooling units. It delivers both ventilation air or conditioned air by selectively introducing outdoor air into any ducted heating and/or cooling system.

Item ID	Item Description
PAN-COOLM	CoolMizer panel

## MPS Series



MPS series is designed for controlling single-stage, heat/cool, high velocity, or heat pump equipment. It is ideal for both new construction and retrofit applications.

Item ID	Item Description
PAN-00202	MPS 2-zone panel
PAN-00203	MPS 3-zone panel

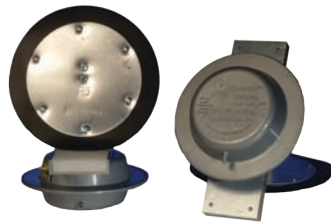
# Dampers

Arzel dampers are installed directly into existing duct work, saving you time and eliminating the mess for the homeowner. The unique motor-less design makes them the quietest, most reliable in the industry. Due to the flexibility and simplicity of Arzel's damper installation, you are able to use branch or trunk dampers based on the application and homeowner's lifestyle.

## EzySlide - Round

Round	
Item ID	Description
STK-ER0004	4"
STK-ER0005	5"
STK-ER0006	6"
STK-ER0007	7"
STK-ER0008	8"
STK-ER0009	9"
STK-ER0010	10"
STK-ER0012	12"
STK-ER0014	14"

The patented EzySlide dampers are Arzel's main damper. With over 50 sizes in stock, it is easy to find the size and shape that best fits any application. If you don't see the size or shape that will fit your application call your local distributor and have a custom size ordered.



## EzySlide - Rectangular

The rectangular EzySlide dampers have the mounting plate and actuator mounted on either the side or bottom of the damper. If the mounting plate and actuator is on the longer dimension the damper is referred to as a bottom-mount damper. If the mounting plate and actuator is on the shorter dimension the damper is referred to as a side-mount damper.

Rectangular - Bottom-Mount			
Item ID	Desc.	Item ID	Desc.
STKSB-E 8X10	8" x 10"	STKSB-E 8X20	8" x 20"
STKSB-E 8X12	8" x 12"	STKSB-E 8X22	8" x 22"
STKSB-E 8X14	8" x 14"	STKSB-E 8X24	8" x 24"
STKSB-E 8X16	8" x 16"	STKSB-E 8X26	8" x 26"
STKSB-E 8X18	8" x 18"	STKSB-E 8X28	8" x 28"
		STKSB-E 8X30	8" x 30"



# Dampers

## EzySlide - Rectangular(cont.)

Rectangular Bottom-Mount	
Item ID	Desc.
STKSB-E 10X12	10" x 12"
STKSB-E 10X14	10" x 14"
STKSB-E 10X16	10" x 16"
STKSB-E 10X18	10" x 18"
STKSB-E 10X20	10" x 20"
STKSB-E 10X22	10" x 22"
STKSB-E 10X24	10" x 24"
STKSB-E 10X26	10" x 26"
STKSB-E 10X28	10" x 28"
STKSB-E 10X30	10" x 30"
STKSB-E 12X14	12" x 14"
STKSB-E 12X16	12" x 16"
STKSB-E 12X18	12" x 18"
STKSB-E 12X20	12" x 20"
STKSB-E 12X22	12" x 22"
STKSB-E 12X24	12" x 24"
STKSB-E 12X26	12" x 26"
STKSB-E 12X28	12" x 28"
STKSB-E 12X30	12" x 30"

Rectangular Side-Mount	
Item ID	Desc.
STKSS-E 8X8	8" x 8"
STKSS-E 810	8" x 10"
STKSS-E 8X12	8" x 12"
STKSS-E 8X14	8" x 14"
STKSS-E 8X16	8" x 16"
STKSS-E 8X18	8" x 18"
STKSS-E 8X20	10" x 20"
STKSS-E 10X12	10" x 12"
STKSS-E 10X14	10" x 14"
STKSS-E 10X16	10" x 16"
STKSS-E 10X18	10" x 18"
STKSS-E 10X20	10" x 20"
STKSB-E 10X30	10" x 30"
STKSS-E 12X12	12" x 12"
STKSS-E 12X14	12" x 14"
STKSS-E 12X16	12" x 16"
STKSS-E 12X18	12" x 18"
STKSS-E 12X20	12" x 20"

## Light Commercial

Item ID	Desc.	Item ID	Desc.
STK-COM12	12"	STK-COM18	18"
STK-COM14	14"	STK-COM20	20"
STK-COM16	16"		

