

———— A VENTILATION GUIDE FOR ————

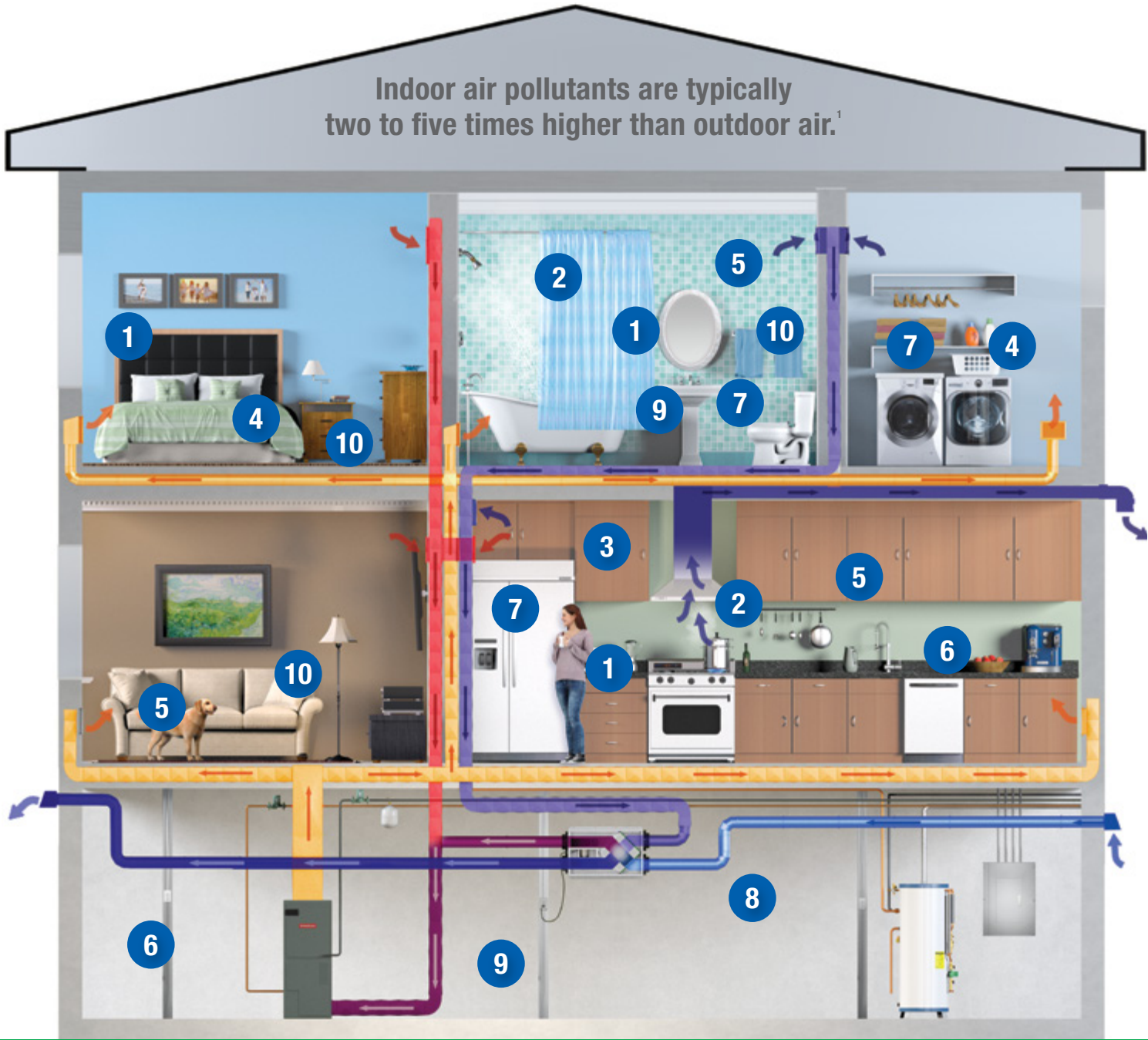
# *High-Performing Homes*

WITH ENHANCED INDOOR AIR QUALITY AND  
REDUCED ENERGY CONSUMPTION





# INDOOR AIR QUALITY MATTERS



## DEFICIENT INDOOR AIR QUALITY IS A THREAT

As buildings get tighter to seal weather out, they seal in contaminants, causing a reduction in indoor air quality (IAQ). Typical contaminants include off-gassing from carpeting, furniture and building materials, excess humidity and mold, odors, cooking and cleaning fumes, CO<sub>2</sub>, hair and fibers, to name a few.

Deficient IAQ is a threat since it can harm occupant health and cognitive function, damage structures and hurt the bottom line. It's especially concerning since people spend about 90% of their time indoors, and indoor air pollutants are typically two to five times higher than outdoor air. The EPA ranked indoor air pollution as a top-five environmental risk to public health.<sup>2</sup>

## ADVERSE EFFECTS OF DEFICIENT IAQ



### HEALTH PROBLEMS

Deficient IAQ can cause allergies, headaches, coughs, asthma, skin irritations and breathing difficulties, as well as cancer, liver disease, kidney damage and nervous-system failure.



### COGNITIVE IMPAIRMENT

Harvard and Berkeley Lab found that CO<sub>2</sub>—a constituent of exhaled breath—negatively impacts thinking and decision-making at levels commonly found indoors.<sup>3</sup>



### DISEASE TRANSMISSION

Ventilation with outdoor air is vital to diluting airborne contaminants and decreasing disease transmission rates.



### REDUCED PRODUCTIVITY

Berkeley Lab found that deficient IAQ can cost \$200 billion in debilitated worker performance and \$58 billion in lost sick time.<sup>4</sup>



VENTILATION CAN ENHANCE IAQ AND DECREASE THE TRANSMISSION OF AIRBORNE INFECTIOUS DISEASES, INCLUDING COVID-19: [BIT.LY/COVID19WP\\_22](https://bit.ly/COVID19WP_22)

## WHO'S AT RISK?

All people are at risk of suffering from deficient IAQ due to considerable time spent indoors. However, children and seniors are most vulnerable due to weaker immune systems. Children are especially susceptible because proportionally they inhale more pollutants than adults and have narrower airways (World Health Organization).



RENEWAIRE VENTILATION SOLUTIONS IMPROVE HEALTH AND WELLNESS

<sup>1</sup> "Indoor Air Quality," U.S. Environmental Protection Agency (EPA), <https://bit.ly/4mRsMRm>.

<sup>2</sup> "Why Indoor Air Quality is Important to Schools," U.S. Environmental Protection Agency (EPA), <https://bit.ly/2SoyRJc>.

<sup>3</sup> Romm, "Exclusive: Elevated CO<sub>2</sub> Levels Directly Affect Human Cognition, New Harvard Study Shows," Climate Progress, <https://bit.ly/2Vp6AE2>.

<sup>4</sup> Alevantis, Berman, Mills, Perlman, "The Costs and Financial Benefits of Green Buildings," U.S. Green Building Council (USGBC), <https://bit.ly/4fOFjkz>.

## HIDDEN AIR CONTAMINANTS IN YOUR HOME

- 1. Contaminated Airborne Aerosols: Aerosols generated by coughing, sneezing, talking and breathing can act as carriers for viruses and bacteria
- 2. Humidity: Exhaled breath, water sources
- 3. Carbon Dioxide: Exhaled breath

- 4. Formaldehyde, VOCs, Toxic Gases: Furniture and treatments, mattresses, carpets, adhesives, cleaners, paints
- 5. Odors: Bathrooms, kitchens, occupants, pets
- 6. Phthalates: Adhesives, vinyl, plastic pipes, building materials

- 7. Bioeffluents: Human metabolic process
- 8. Radon: Uranium decaying in soil
- 9. Mold: Stagnant water, drains, condensate pans, damp areas
- 10. Dust Mites: Carpets, fabrics, foam cushions

PEOPLE SPEND  
**90%**  
OF THEIR TIME  
**INDOORS**



# REDUCE ENERGY COST AND IMPROVE IAQ AT HOME

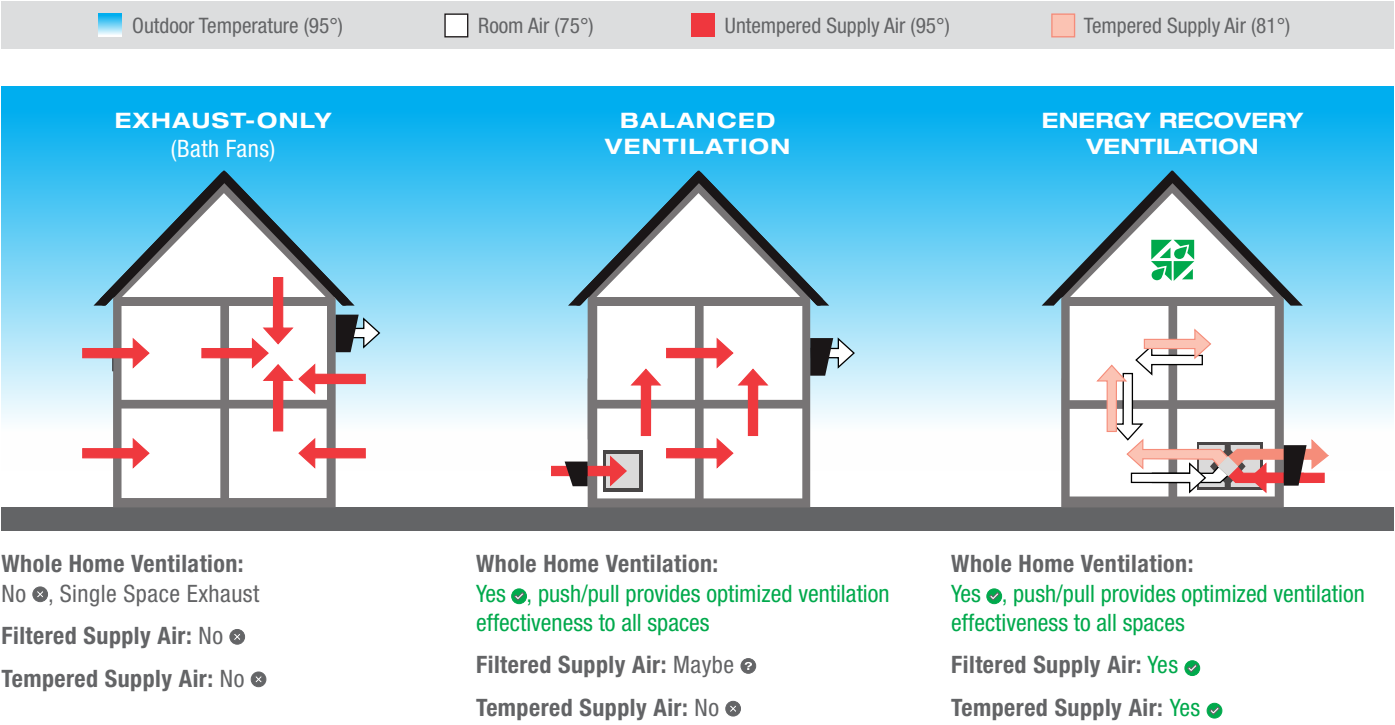
## HIGHEST-QUALITY INDOOR AIR VIA VENTILATION

The solution to pollution is dilution achieved via **increased and balanced ventilation**, which is the most effective way to realize cleaner and healthier indoor air. With enough controlled fresh and filtered outdoor air coming in to replace equal parts of stale indoor air via balanced design, IAQ will be enhanced.

TYPES OF HOME VENTILATION	FAIR	GOOD	BETTER	BEST
	EXHAUST ONLY (bath fans)	BALANCED VENTILATION	HRV	ERV
EXHAUSTS CONTAMINANTS FROM WHOLE HOUSE: Generally, exhaust-only ventilation, such as bath fans and oven hoods, only expel contaminants from a localized single source. The optimal solution will provide whole-house ventilation.	✗	✓	✓	✓
PROVIDES FILTERED SUPPLY AIR: Exhaust-only units bring in uncontrolled outdoor air that has seeped through cracks and openings. Uncontrolled air is not filtered air. Controlled supply air is preferable as contaminants are filtered out.	✗	✓	✓	✓
PERFORMS WELL IN ALL CLIMATES YEAR-ROUND: Hot, humid or sub-zero extreme environments add a heavy load onto home heating and cooling systems. Because RenewAire ERVs temper the air (temperature and humidity) via energy recovery, they work well in all climates. Additionally, RenewAire ERVs do NOT have issues with freezing in winter conditions, which can be problematic for HRVs: <ul style="list-style-type: none"><li>◆ Since humidity is transferred via core material in an ERV, the core itself will not freeze so there is no need for defrost (known issue with HRVs)</li><li>◆ There are no condensate lines to freeze in an ERV (known issue with HRVs)</li></ul>	✗	✗	✗	✓
OPTIMIZES ENERGY AND SAVES MONEY: Energy recovery recycles energy by reusing the otherwise-wasted energy and humidity from exhaust air to temper incoming outdoor air, which saves money year after year by lowering demand/load on your mechanical AC/heating equipment.	✗	✗	✗	✓
EASY TO INSTALL: RenewAire ERVs can be mounted in multiple orientations and they do not require drain pans, which makes them a breeze to install. By comparison, HRVs require drain pans, which can complicate installation. Also, ERVs provide a single exhaust point, which means less equipment to purchase and install (no need for individual bath fans).	✗	Maybe ?	✗	✓
EASY TO MAINTAIN: Since RenewAire ERVs do not require drain pans (like HRVs), issues with frozen drain lines in cold-weather applications are avoided. Additionally, since ERVs provide a single exhaust point, this means less maintenance and cleaning. Our ERVs are effortless to maintain—simply check and replace disposable filters as needed and vacuum the ERV core face once a year.	✗	Maybe ?	✓	✓

## THE BEST SOLUTION

The best solution is RenewAire’s energy recovery ventilation technology, which provides **enhanced IAQ**, greater **ventilation efficiency** and major **energy cost savings**.



## BETTER HEALTH + LOWER BILLS = INCREASED VENTILATION VIA ERVs

The American Society of Heating, Refrigeration and Air Conditioning Engineers (ASHRAE) 62.2 committee has established a residential ventilation standard, known as *Ventilation and Acceptable Indoor Air Quality in Residential Buildings*. The goal of this standard and its continuous revisions are to not only **evaluate and recommend every building’s minimum ventilation needs**, but also emphasize indoor air quality and its relationship with occupant health. **ERVs reduce energy costs while meeting the standard.**

See the chart below to calculate the minimum ventilation required for your home: .03 x sq. ft. + 7.5(bedroom +1). For example, a 2,200 sq. ft. home with four bedrooms requires a minimum of 104 CFM.

SQUARE FEET	MINIMUM VENTILATION AIRFLOW REQUIRED BY HOME SIZE*							
	<500'	501'–1000'	1001'–1500'	1501'–2000'	2001'–2500'	2501'–3000'	3001'–3500'	3501'–4000'
1 BEDROOM	30	45	60	75	90	105	120	135
2 BEDROOMS	38	53	68	83	98	113	128	143
3 BEDROOMS	45	60	75	90	105	120	135	150
4 BEDROOMS	53	68	83	98	113	128	143	158
5 BEDROOMS	60	75	90	105	120	135	150	165

\* Infiltration credit not considered, please contact RenewAire to assist in selecting a unit that is best suited for your home.

# RENEWAIRE SINGLE/MULTI-FAMILY ERV FRESH AIR SYSTEM

NEW!



**AERI™ SERIES**

- ◆ 35–255 CFM
- ◆ Five smart constant volume airflow setpoints
- ◆ Snap-N-Go™ duct collars
- ◆ Lightweight EPP foam cabinet, 25 lbs.
- ◆ EC motors, variable speed with boost-mode, Dial-A-Flow easy balancing, or plug-in power
- ◆ MERV 13 filter accessory



**SL SERIES**

- ◆ 30–130 CFM
- ◆ Low-profile, commercial-grade appliance, often used for multi-family units
- ◆ EC motors, variable speed with boost-mode, Dial-A-Flow easy balancing, plug-in or hard wired power
- ◆ MERV 13 filter accessory



**AWARD WINNING EV PREMIUM SERIES**

- ◆ 30–390 CFM
- ◆ Certified for commercial-grade applications
- ◆ EC motors, variable speed with boost-mode, Dial-A-Flow easy balancing, plug-in or hard wired power
- ◆ MERV 13 filter accessory
- ◆ EV Premium SH, MH, LH awarded TechHome Builder's 2023 Brilliance Award



**EV SERIES**

- ◆ 40–200 CFM
- ◆ Four-duct design
- ◆ Plug-in cord power
- ◆ MERV 13 filter accessory



**BR SERIES**

- ◆ 50–140 CFM
- ◆ Two-duct design
- ◆ Plug-in cord power
- ◆ Duct mounted or thru-the-wall
- ◆ MERV 13 filter accessory

4

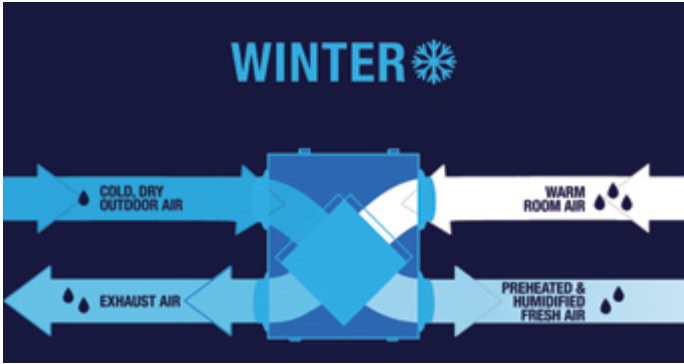
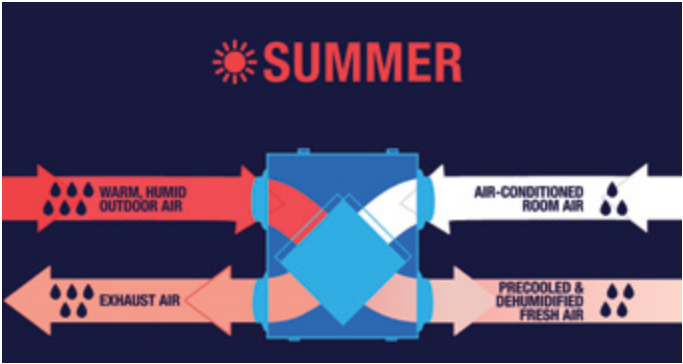
5



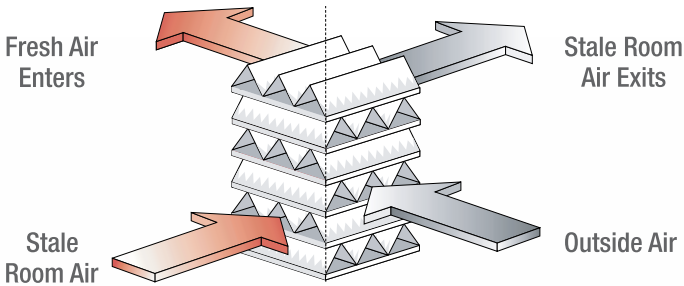
# ERV's FOR EVERY HOME

## OPTIMIZING ENERGY EFFICIENCY IN EVERY GEOGRAPHIC REGION OR CLIMATE

RenewAire residential ERVs are a sustainable ventilation solution. Our **static-plate, cross-flow core separates the outgoing, polluted indoor airstream from the incoming fresh airstream—while simultaneously transferring total energy** (heat and water vapor) between the two. Airstreams do not mix and pollutants are not transferred across partition plates.



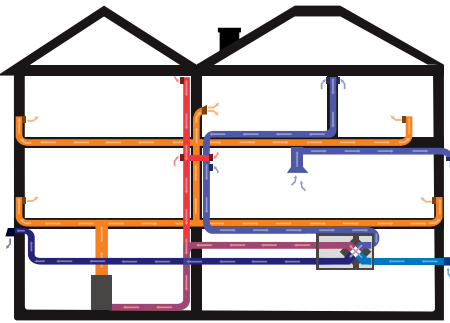
**AIRSTREAMS DO NOT MIX AND POLLUTANTS ARE NOT TRANSFERRED ACROSS PARTITION PLATES**



## INSTALLATION STRATEGIES FOR NEW OR RETROFIT CONSTRUCTION

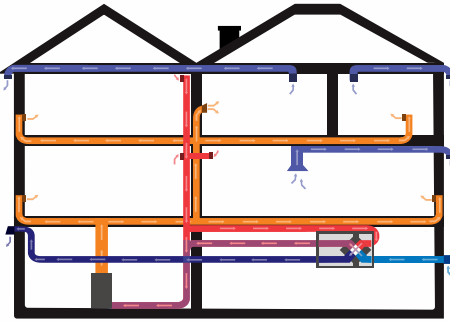
### CENTRAL EXHAUST

The preferred installation application for any **new construction**, as it is the most energy-efficient ventilation strategy. Central Exhaust provides an ample supply of filtered outdoor air and replaces bathroom exhaust fans, capturing energy from bathrooms and kitchens (general air, not hood exhaust) that would otherwise be wasted. According to the Department of Energy (DOE), balanced ERV ventilation results in the lowest level of total volatile organic compounds (TVOCs).<sup>5</sup>



### GENERAL EXHAUST

Installation option for **retrofitting an ERV into your established system**. General Exhaust provides an ample supply of filtered outdoor air and is often a preferred option for use in a home that already has an HVAC system in place. This installation method utilizes exhaust fans (except kitchen hood) and ductwork that already exist. Fresh air may be supplied to the furnace/AC via return air duct connections. This is commonly referred to as partial bypass.



<sup>5</sup> Rudd, Bergey, "Ventilation System Effectiveness and Tested Indoor Air Quality Impacts," DOE, <https://bit.ly/3er2fqjf>.



## RenewAire supports the PILLARS OF SUSTAINABILITY

**PEOPLE**  
Reduce acute and chronic health problems  
Improve alertness and cognitive function  
Boost productivity

**PLANET**  
Committed to green manufacturing since 1982  
Protect the environment with less energy use  
Achieve a green home with greater energy efficiency

**PROFIT**  
Can benefit from a short payback period  
Realize annual energy savings  
Trouble-free operations and maintenance



RENEWAIRE VENTILATION SOLUTIONS **INCREASE MONETARY BENEFITS**



FOR INFORMATION ON ERV REBATES IN YOUR COMMUNITY, VISIT **DSIREUSA.ORG**

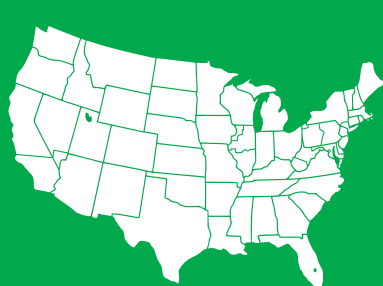




# *Install a RenewAire ERV*

FOR ENERGY-EFFICIENT AIR QUALITY AT HOME

Find a RenewAire representative by visiting  
**[RenewAire.com/find-my-rep](https://RenewAire.com/find-my-rep)**



RENEWAIRE ERVs ARE THE  
**SUSTAINABLE VENTILATION SOLUTION**