

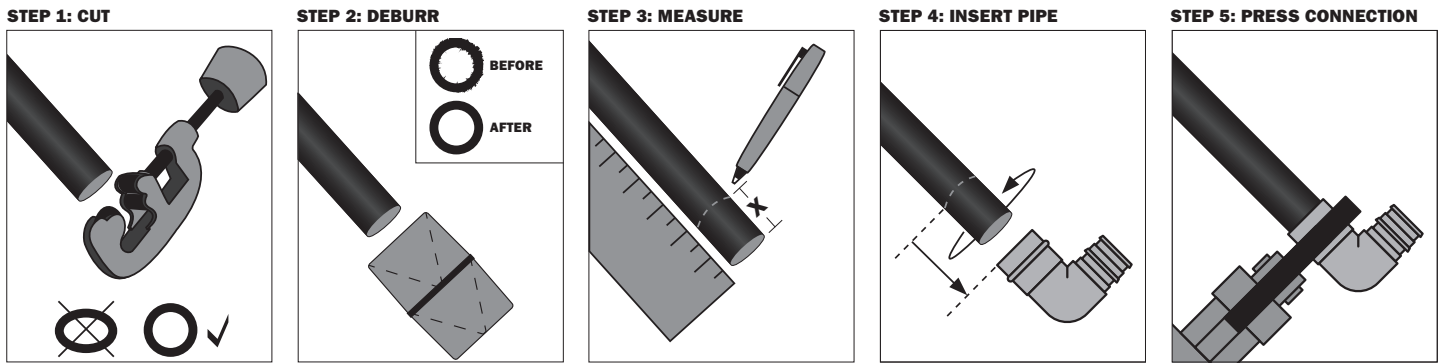
Webstone's Pro-Connect™ Press fittings are a quick, convenient way to connect copper pipes, and are compatible with popular press fit tools. Pro-Connect Press fittings are manufactured with an EPDM sealing element installed at the factory. These fittings are designed for operating temperatures between 0°F to 250°F (-18°C to 120°C).

**IMPORTANT:** Follow all federal/national, state and local codes when installing, testing or performing work on systems. All parts are covered by a lifetime warranty against manufacturing defects provided they are installed by a licensed plumber and operated under normal working conditions. Disassembling parts other than the handle will void this warranty. If you have any questions or comments, please contact us at (800) 225-9529 or visit us on the web – [www.webstonevalves.com](http://www.webstonevalves.com).

**Review this entire instructions document prior to installation in order to determine if specific requirements apply to your application.**

Adequate clearance for the press tools must be considered when planning an installation. Please refer to the tool manufacturer's instructions to determine the minimum distance required to ensure that the tool will clear any obstructions.

## Installing Tubing into Pro-Connect™ Press Products



### Step 1 – Match Tubing and Fitting Size, Cut Tubing

Match the copper piping with the appropriate Pro-Connect™ Press fitting. Verify that both the pipe and Pro-Connect Press product are clean, undamaged and appropriate for the intended service. Cut the tubing to the proper length necessary for the installation.

**IMPORTANT: The pipe must be long enough to fit inside the Pro-Connect Press fitting, not just to reach its face.**

The minimum depth that the pipe will be inserted is shown in the table to the right.

When cutting the pipe, care must be exercised to ensure that it remains round and does not get flattened into an oval. Failure to do so may affect the performance of the joint.

PRODUCT SIZE	MINIMUM INSERTION DEPTH
1/2"	3/4"
3/4"	7/8"
1"	7/8"
1 1/4"	1"
1 1/2"	1 5/16"
2"	1 9/16"

### Step 2 – Deburr Pipe

Both inside and outside of the tubing must be cleaned of burrs prior to installation. Failure to properly deburr the interior and exterior of the tubing may result in damage to the fitting's o-ring and cause the fitting to leak.

### Step 3 – Measure Pipe Minimum Insertion Depth

Prior to installing the pipe into the Pro-Connect™ Press fitting, measure the minimum insertion depth from the end of the line and mark it with felt tipped pen.

### Step 4 – Insert Pipe

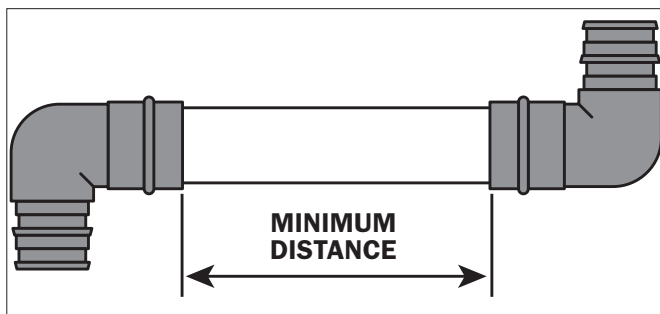
Insert the pipe into the Pro-Connect™ Press fitting and slowly turn the tube or product until pipe reaches fitting stop. Water may be used as a lubricant if desired, **HOWEVER NO OTHER LUBRICANTS MAY BE USED**. Verify the tubing has been fully inserted into the fitting by measuring the distance between the end of the product and the line drawn on the tubing in Step 3. The line should be no further than 1/16" (1.5 mm) from the end of the press connection.

### Step 5 – Press Fitting

Verify that the pipe is fully inserted to the mark. Keeping the jaw of the tool at a right angle to the fitting, center the jaw on the ring in the connection. Follow the instructions provided by the tool manufacturer to press the connection.

## Minimum Distance Between Pro-Connect Press Connections

To ensure a proper seal, a minimum distance is required between fittings. Failure to provide the required distance may distort the pipe, resulting in an ineffective seal.



TUBING DIAMETER	MINIMUM DISTANCE
1/2"	0"
3/4"	0"
1"	0"
1 1/4"	7/16"
1 1/2"	5/8"
2"	3/4"
2 1/2"	5/8"
3"	5/8"
4"	5/8"

## System Testing

The piping system can be checked for leaks once all connections have been completed. In the event a leaky connection is found, re-press the fitting following the instructions above. System testing should be completed in accordance with requirements or codes of any federal/state/local governing body having jurisdiction over the installation. Pressure testing should not exceed the maximum pressure rating as noted on the product.