


**Mueller Streamline Co.**
**Address:** 8285 Tournament Dr., Suite 150

Memphis, TN 38125

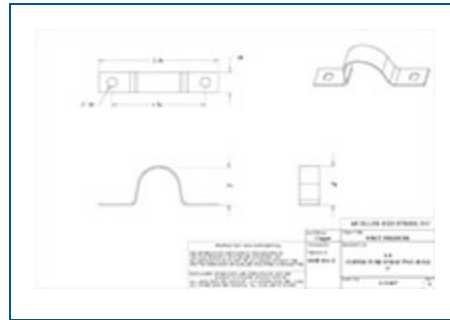
**Ph:** 901-753-3200

**Email:** [contact@muellerindustries.com](mailto:contact@muellerindustries.com)
**Web:** <http://www.muellerindustries.com/>

## Item # A 01467, Copper Tube Strap Two-Hole, C, 5/8"

Streamline® Copper Solder-Joint Fittings for supply/pressurized systems have been the leading brand of copper fittings for over 80 years. Available in both wrought copper and cast bronze, our product selection has grown to become the most extensive in the industry. We are the acknowledged experts at engineering and manufacturing precision solder-joint copper fittings. Quality, consistency and reliability have made the Streamline® brand trusted and specified all around the world.

- For use in above-ground potable water supply systems
- Constructed of high-grade copper or bronze materials
- Made to applicable ASME standards B16.15, B16.18, B16.22, B16.24, B16.50, B1.20.1
- Wrot fittings meet NSF 61G


[Specifications](#) | [Dimensions](#) | [Details](#)

## Specifications

<b>Weight</b>	0.010 lb
<b>Material</b>	WROT COPPER
<b>Operating Temperature</b>	<a href="#">CDA-Copper-Fitting-Pressue-Temp-Ratings</a>
<b>Operating Pressure</b>	<a href="#">CDA-Copper-Fitting-Pressue-Temp-Ratings</a>
<b>End Size</b>	5/8 in
<b>Standards</b>	NSF 61G ASME B16.15 ASME B16.18 ASME B16.22 ASME B16.24 ASME B16.50

ASME B1.20.1

## Dimensions

<b>Overall Length</b>	2.10 in
<b>Overall Height</b>	0.78 in
<b>Overall Width</b>	0.38 in

## Details

<b>Style</b>	WS-1100
<b>Qty Pcs / Bag</b>	100
<b>Master Qty Pcs / Box</b>	2000
<b>Mueller Description 1</b>	5/8 NOM TUBE STRAP
<b>Mueller Description 2</b>	3/4 OD TUBE STRAP