



325 COMMERCE DRIVE
 MT VERNON, OH 43050
 800-253-8236

SPECIFICATION DATA SHEET

DATE: 8-22-14
 PREPARED BY: RL

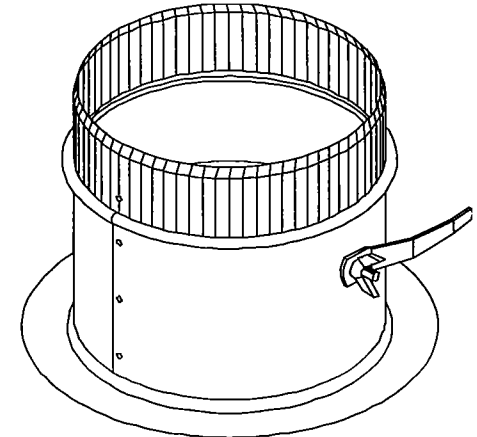
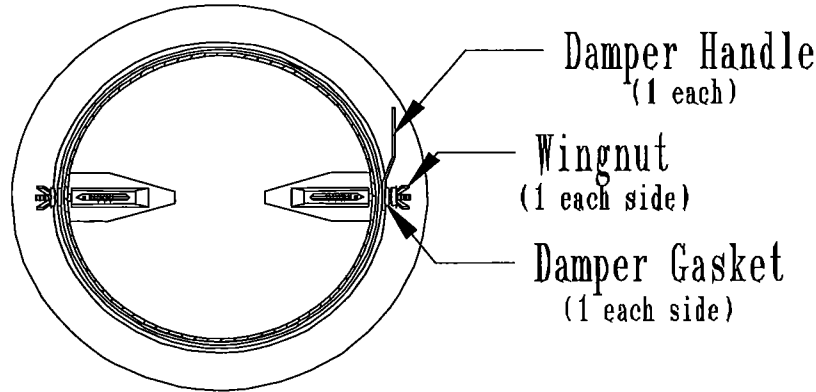
MODEL NO. 8218

FLOWTITE TAKEOFF W/DAMPER

STANDARD MODEL

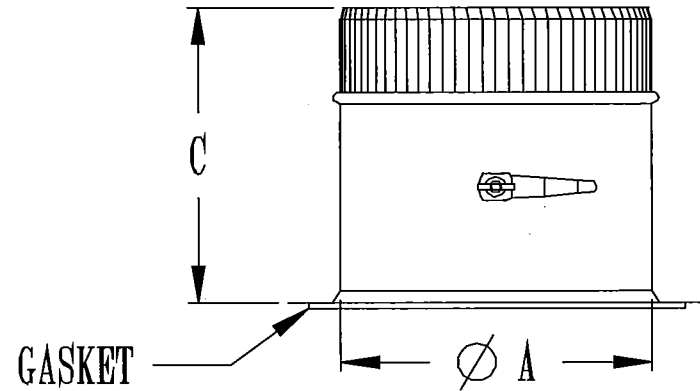
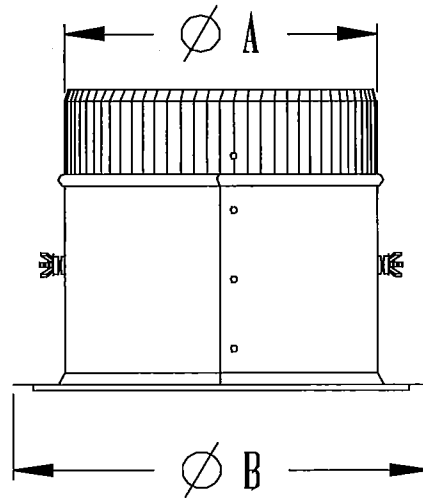
DIMENSIONS

SIZE	A	B	C
4"	4"	5 3/8"	6 1/4"
5"	5"	6 3/8"	6 1/4"
6"	6"	7 3/8"	6 1/4"
8"	8"	9 3/8"	6 1/4"
9"	9"	10 3/8"	6 1/4"
10"	10"	11 3/8"	6 1/4"
12"	12"	13 3/8"	6 1/4"
14"	14"	15 3/8"	6 1/4"
16"	16"	17 3/8"	6 1/4"
18"	18"	19 3/8"	6 1/4"
20"	20"	22"	6 1/4"



MATERIAL SPECIFICATIONS

HOT DIPPED GALVANIZED STEEL.
 PER ASTM A 653 CSB.
 ASSEMBLED WITH 1/8" ZINC COATED RIVETS.
 BODY: 26 GAUGE CONSTRUCTION
 HEAVIER GAUGES AVAILABLE
 DAMPER GAUGE: 4"-12" = 26GA
 14" & UP = 24GA
 WINGNUT = 5/16-18, ZINC PLATED STEEL
 DAMPER HANDLE = 18 GAUGE
 GASKET IS CROSSLINKED POLYETHYLENE.



OPTIONS

Damper standoffs available:
 Economy 2"
 Durodyne-1/4" damper ends.
 Durodyne-3/8" square continuous shaft.
 Available with Ultra-Seal

JOB: _____
 LOCATION: _____
 CONTRACTOR: _____
 ENGINEER: _____
 NOTES: _____