



## ER-UV14-24V UVC Lamp

### Installation & Maintenance Instructions

#### **UNPACKING THE UNIT**

Each lamp is shipped with the germicidal lamp placed in a box with protective packaging. When handling the lamp take care to not touch the glass portion of the lamp with bare hands. Oils from the hands can cause “hot spots” which reduce lamp life. Handle by the socket end or use a soft cloth. If you accidentally touch a lamp, clean it using the included alcohol cleaning pad or a soft cloth dampened with rubbing alcohol. The lamp is fragile and proper care must be taken when removing from packaging.

The following parts are included:

- Power Supply with remote lamp assembly
- One (1) 14” Germicidal Lamp (packed in lamp box)
- Two (2) caution labels
- Installation & maintenance instructions
- Magnetic Z bracket
- Eight (8) Sheet Metal Screws
- Alcohol pad for cleaning lamps

### **IMPORTANT: SAFETY INSTRUCTIONS**

### **IMPORTANT: Instructions de sécurité**

When installing and using this electrical equipment, basic safety precautions should always be followed including the following:

- 1. READ AND FOLLOW ALL INSTRUCTIONS.**
- 2.** Always be sure the unit is unplugged during installation or service procedures.
- 3.** The ultraviolet light produced by the UV lamp is harmful to your eyes. Do not look directly at the lamp. Should it become necessary to view the lamp, use UV-protected goggles.

Lors de l'installation et de l'utilisation de cet équipement, des précautions devront être suivies.

- 1- Lire et suivre les étapes attentivement.**
- 2-** Assurez vous de toujours débrancher avant l'installation ou le service.
- 3-** La lumière ultraviolette, produite par la lampe UV est nocive pour vos yeux. Ne regardez pas directement la lampe. Si, il devient nécessaire d'afficher la lampe, utiliser des lunettes de protection UV.

## **INSTALLATION:**

- Do not locate the unit within 20” of plastic material that will be directly exposed to the UV light, such as wiring, return-side humidifier or certain types of air filters. Check with the filter manufacturer to see if their material is UV resistant. Over time, UV light may degrade plastic.
- Do not touch the glass portion of the lamps with bare hands because oils from the hands can cause “hot spots” which reduce lamp life. Handle either by the porcelain caps or use a soft cloth. If you accidentally touch a lamp, wipe it off, using a soft cloth dampened with rubbing alcohol.

### **INSTALLING THE UV LAMP USING THE MAGNETIC Z BRACKET**

1. Find a suitable cool, dry location for the ballast making sure supply cord to ballast will reach 24 volt power supply and that lamp connector can reach the desired lamp mount area.  
**Do not mount in unvented panels or install in environments that will exceed 160 degrees fahrenheit or will expose the ballast to moisture.**
2. Drill a 1/2” hole on the air duct near your desired lamp mount location.
3. Taking care not to touch the glass, hold the lamp by the plastic end and insert fully into the magnetic Z bracket and secure with lamp holder. (See photos 1 & 2)
4. Unplug mid cord connector and insert the moisture resistant lamp socket onto lamp.
5. Route lamp power supply cord through drilled hole from step #2.
6. Place the lamp with magnetic Z bracket into position inside duct and re-connect the mid cord connectors.
7. **Adhere included UV warning label onto ductwork within six inches of the UV lamp.**

### **INSTALLING THE UV LAMP ON SHEET METAL**

1. Drill a 7/8” hole on the air duct in a suitable location.
2. To convert the magnetic Z bracket into a duct mounting plate, carefully cut or break off the lamp mount portion of the magnetic Z bracket.
3. Center the lamp mounting plate on hole.
4. Use four self tapping screws provided to secure mounting plate on the sheet metal.
5. Taking care not to touch the glass, hold the lamp by the plastic end and insert fully into the mounting plate and secure with lamp holder.
6. Find a suitable location to mount the ballast making sure supply cord to ballast will reach 24 volt power supply. Mount the ballast using two self-tapping sheet metal screws provided.
7. Insert the moisture resistant lamp socket onto lamp.
8. **Adhere included UV Warning Label onto ductwork within six inches of the UV lamp.**

## **WIRING**

The ballast operates with 24 volts. Do not cycle the germicidal lamp with the furnace blower. You must allow unit to run continuously. Wire the unit in accordance with local wiring codes.

**IMPORTANT! Systems with high 24 VAC loads may require the installation of a separate 24 VAC transformer to power the UV light. Draws 16 VA. You may need to do load calculation: Volts under load X Amps under load.**

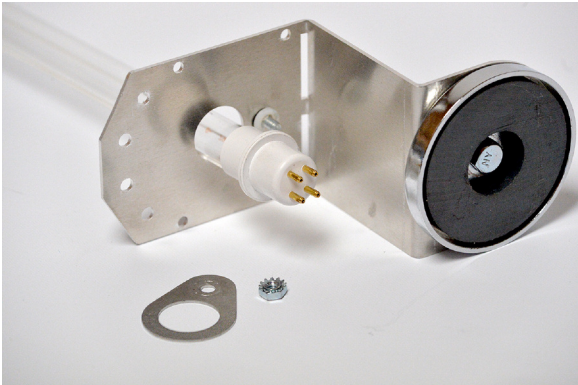


Photo 1

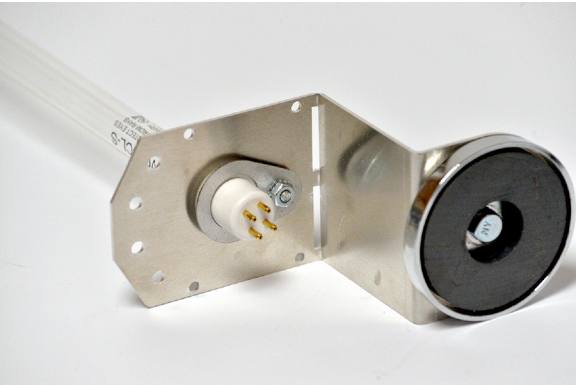


Photo 2

**ACCESSORIES**



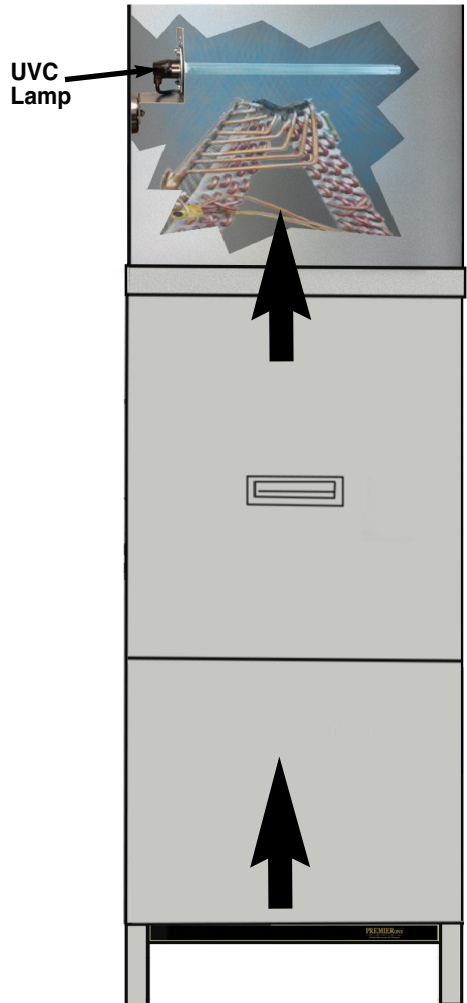
**500489** Lamp reflector for magnetic Z bracket.



**LSK-24V** 20 watt 14" UV lamp service kit.



**LSK-24V ADPT** 20 watt 14" UV lamp service kit with adaptor.  
*For use with other brands UV remote units.*



## **MAINTENANCE**

This maintenance schedule is only a guideline, determined by average conditions. Actual conditions will dictate the frequency of cleaning and/or replacement of lamps. Do not touch the glass portion of the lamp with bare hands because oils from the hands can cause “hot spots” which reduce lamp life. Handle either by the socket end or use a soft cloth. If you accidentally touch a lamp, clean it using a soft cloth dampened with rubbing alcohol.

### **CLEANING THE LAMP** - Recommended interval: 12 months

1. Disconnect power to the ballast. Unplug mid cord connector before removing lamp.
2. If duct mounted, remove lamp holder then holding the lamp socket pull away from lamp mount. (If mounted using the magnetic Z bracket, there is no need to remove the lamp from the bracket.)
3. Using a soft cloth moistened with rubbing alcohol, wipe down the lamp. If there is a large build-up of dust particles, you may wish to use a can of air first. Always handle lamp by the end socket.
4. If duct mounted, carefully slide lamp into duct through lamp mount reinstalling lamp holder.
5. Reconnect mid cord connector and restore power to the unit.

### **REPLACING THE LAMP** - Recommended interval: 24 months

Replacement lamps are available through your HVAC contractor.

You must disconnect power to the ballast to reset its auto protect circuit.

Follow above procedure except #4 where you replace the lamp instead of cleaning it. (*Note: standard off-the-shelf lamps are not compatible with this unit. Use of improper lamps will void warranty.*)

## **TROUBLESHOOTING**

- Power LED should light when power is supplied to the unit. The lamp LED indicates lamp function.

### **If the lamp LED does not light:**

1. You must disconnect power to the ballast to reset its auto protect circuit.
2. Be sure lamp connector is fastened securely.
3. Check to be sure there is power to the unit.
3. If the LED still does not light, replace lamp.
4. If still not operating, replace ballast.

*Note: Standard off-the-shelf lamps are not compatible with this unit. Use of improper lamps will void warranty.*

## **WARRANTY**

All electronic components carry a three year warranty to the original homeowner. The manufacturer reserves the right to send replacement parts or to replace the unit at its discretion. This warranty does not cover any labor or damage resulting from improper installation or abuse. Use of any lamp other than a genuine PremierOne lamp designed for this device will void the warranty.

The original lamps are warranted for a period of two years. This warranty does not cover lamps broken during shipping, installation or as a result of improper handling.

All returns are routed through your contractor/wholesaler and must be approved and accompanied by an RGA#.

The limited warranties described above are in lieu of any other warranty, whether expressed or implied, written or oral (including any warranty of merchantability or fitness for a particular purpose.) This warranty gives you specific legal rights and you may also have other rights which vary from state to state.