

Specifications

Product SpeediChannel™

Application Air conditioning line sets

Purpose DiversiTech SpeediChannel™ is a system used to cover line sets, drain lines, and control cables when they can not be installed inside a wall.

Composition U.V. inhibited virgin resin

Advantages SpeediChannel™ is the perfect universal installation system - combining high quality resins in a paintable natural color easily adapted to any colored mounting, and SpeediClip™, a unique sliding rail system that makes line set installation a one man job. DiversiTech SpeediChannel™ is easier to inventory, transport and install than competing brands, and the flat pack design reduces warehouse storage and contractor transport space. Tight fit corner design & installation accessories deliver the contractor a clean install every time.

Colorfast Stability The stability of the color of the Product is such that after **5 years** external exposure in the climate zone defined within following paragraph, the contrast on the Grey scale according to ISO EN 105 A02 of the finished goods made from the Product will not be below **level 3**, when compared to an unexposed control sample of the same grade.

This statement is limited to the climate zones where the annual global irradiation is less than **100,000 Langley's : Northern European climate.**

Hardware Stainless steel

Unique Pieces

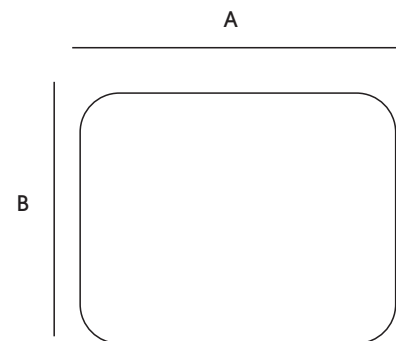
- Flat wall escutcheon
- Integrated flex joint
- Long radius 90o flat elbow
- 20mm drain line with double connections
- True "Y" connection

Sleeve Style Single peice

Certification UL recognized in the US and Canada



230-D3



Package Metrics

Producer of Goods DiversiTech

Domestic/Foreign Commodity Foreign

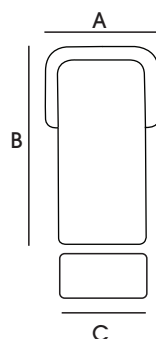
Code*	Channel Dimension		Overall Length
	A	B	C
230-D3	2.75 in	2.55 in	78.74 in
230-D4	4.13 in	2.95 in	78.74 in
230-D6	5.9 in	3.14 in	78.74 in

Specifications

Wall Penetration

- Ivory colour/U.V. resistant
- Packed each separately in plastic film

	A	B	C
230-WC3	4.33 in	7.08 in	2.77 in
230-WC4	5.7 in	7.48 in	4.14 in
230-WC6	6.29 in	7.87 in	5.92 in

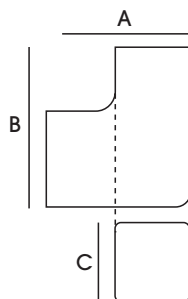


230-WC3

90° Flat Bend

- Ivory colour/U.V. resistant
- Packed each separately in plastic film

	A	B	C
230-FB3	4.33 in	4.52 in	2.77 in
230-FB4	5.9 in	5.9 in	4.14 in
230-FB6	6.69 in	6.69 in	5.92 in

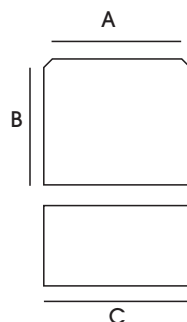


230-FB3

90° Elbow Bend

- Ivory colour/U.V. resistant
- Packed each separately in plastic film
- To place inside the internal corner

	A	B	C
230-EB3	3.74 in	3.74 in	2.7 in
230-EB4	4.33 in	4.33 in	4.14 in
230-EB6	6.1 in	6.1 in	5.92 in

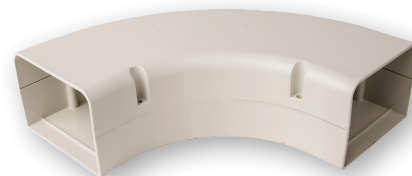
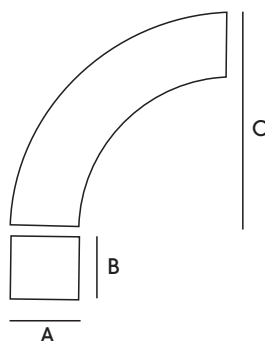


230-EB3

90° Long Flat Elbow

- Ivory colour/U.V. resistant
- Packed each separately in plastic film
- Ideal for copper bending with a wider radius application

	A	B	C
230-LFB3	2.96 in	2.77 in	9.84 in
230-LFB4	4.34 in	3.16 in	9.84 in
230-LFB6	6.11 in	3.36 in	9.84 in



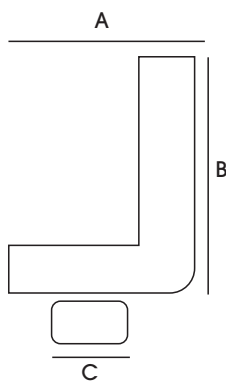
230-LFB4

Specifications

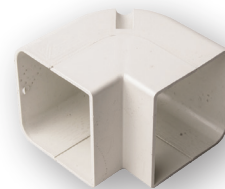
Elbow Bend 90° CORNER-IN

- To place around the outside corner
- Ivory colour/U.V. resistant
- Packed each separately in plastic film

	A	B	C
230-EIN3	3.74 in	3.74 in	2.77 in
230-EIN4	4.33 in	4.33 in	4.14 in
230EIN6	6.1 in	6.1 in	5.92 in



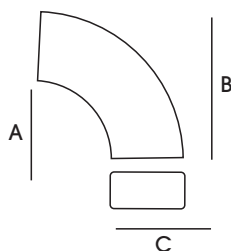
230-EIN3



45° Flat Bend

- Ivory/U.V. resistant
- Packed each separately in plastic film

	A	B	C
230-FB453	3.64 in	5.72 in	2.77 in
230-FB454	3.64 in	6.7 in	4.14 in
230-FB456	3.64 in	7.49 in	5.92 in



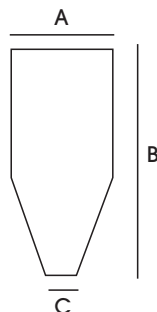
230-FB453



Duct End

- Ivory colour/U.V. resistant
- Packed each separately in plastic film

	A	B	C
230-DE3	4.72 in	2.77 in	1.77 in
230-DE4	4.72 in	4.14 in	1.96 in
230DE6	4.72 in	5.92 in	2.36 in



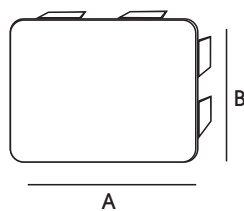
230-DE4



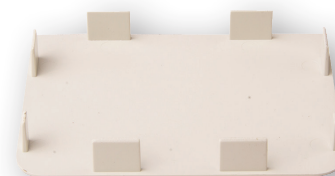
Duct Cap

- Ivory colour/U.V. resistant

	A	B
230-DC3	2.75 in	2.55 in
230DC4	4.13 in	2.95 in
230-DC6	5.9 in	3.14 in



230-DC4

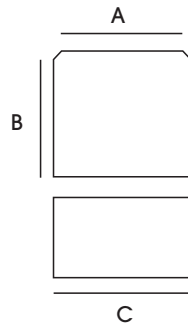


Specifications

Connection Piece

- Ivory colour / U.V. resistant
- Packed each separately in plastic film

	A	B	C
230-CP3	2.96 in	2.77 in	2.77 in
230-CP4	4.34 in	3.16 in	4.14 in
230-CP6	6.11 in	3.36 in	5.92 in

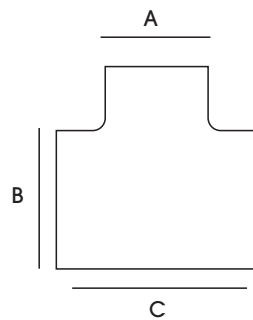


230-CP6

T-Joint

- Extremely useful in case of multi-split
- System to combine 70 mm wit Duct 150 mm or Duct 150 mm with Duct 105 mm
- Ivory colour/U.V. resistant
- Packed each separately in plastic film

	A	B	C
230-TJ4	4.14 in	4.14 in	7.87 in
230-TJ6	5.92 in	5.92 in	9.84 in

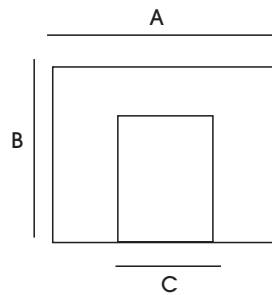


230-TJ6

Reducer Joint

- Ivory colour/U.V. resistant
- To connect a CE.D. 70 duct to a CE.D. 105 duct and reversely
- To connect a CE.D. 70 duct to a T-Joint CE. TJ 105

	A	B	C
230-TC34	4.14 in	3.16 in	2.77 in
230-TC46	5.92 in	6.11 in	4.14 in



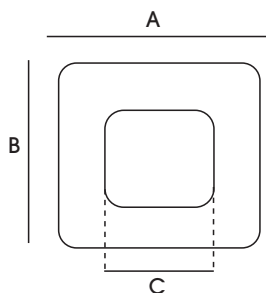
230-TC34

Specifications

Wall Rosette

- Ivory colour/U.V. resistant
- Packed each separately in plastic film

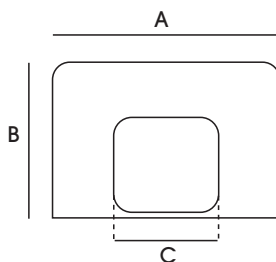
	A	B	C
230-WR3	4.54 in	4.34 in	2.77 in
230-WR4	5.92 in	4.74 in	4.14 in
230-WR6	7.49 in	6.51 in	5.92 in



Flat Rosette

- Ivory colour/U.V. resistant
- Packed each separately in plastic film

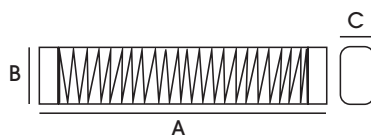
	A	B	C
230-FR3	6.11 in	3.54 in	2.77 in
230-FR4	5.92 in	3.93 in	4.14 in
230-FR6	7.48 in	4.33 in	5.92 in



Flex Joint

- Ivory colour/U.V. resistant
- Packed each separately in plastic film

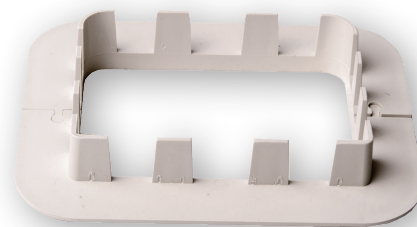
	A	B	C
230-FJ3	19.68 in	2.55 in	2.55 in
230-FJ4	19.68 in	3.93 in	3.93 in



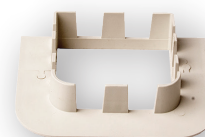
Painting Specifications:

DiversiTech recommends any 100% acrylic latex, or 100% acrylic latex with a urethane additive, when painting SpeediChannel products. The reason for this recommendation is because of the paint's flexibility. Lacquers are not recommended with PVC products because lacquers are more brittle and won't flex with the channel. Some suggestions: Duration by Sherwin Williams, Manor Hall paints by PPG and Moorelife by Benjamin Moore. In addition to paint type, only light-to-medium colored paints (Light Reflectance Value of 55% units or greater) should be applied to SpeediChannel or most any exterior PVC products. Light Reflectance Value (LRV) is a measurement that indicates how much light a color reflects. An LRV of 0% is absolute black, and an LRV of 100% is perfectly reflective white. LRV is on the back of most color swatches and in the index of all major brands' fandecks. It is not safe to assume the paint is a light color. Some paints that appear light beige can have an LRV in the 20s or 30s.

230-WR4



230-FR3



230-FJ4

