

The Asurity Connected Wet Switch® helps prevent flooding and property damage by detecting water caused by accumulation of air-conditioning condensate, drain leaks, etc. The device notifies the user by either Email or SMS Text. When water is detected, contacts controlling the system are disconnected and a notification is sent. Multiple Wet Switches may be connected in series (within the electrical limits of the power supply) to expand coverage area. The Connected Wet Switch incorporates isolated relay contacts (both normally open and closed) for added flexibility in installations with electronic control boards where breaking one lead from the transformer is not possible.



SCAN  
for  
Quick Start Guide  
and Video  
Instructions

**Installation**

1. Turn off power to the HVAC system.
2. Place Connected Wet Switch, padded side down, on the surface to be monitored.
3. Connect wiring as shown in the diagrams below. Wires may be extended, but avoid excess run lengths.
4. Restore power to the HVAC system.
5. Press "PUSH TO TEST" to assure proper function. Warning: It is recommended to verify operation of Wet Switch using the "TEST" and "RESET" buttons at time of installation and at least annually thereafter.
6. See back for setting up notifications.

**Controlling Selected Components**

System components such as compressors, electric valves, condenser pumps, chill water pumps, or other controls may be connected selectively and independently to Connected Wet Switch.

The Connected Wet Switch can be powered from either VAC and VDC sources.

Operation of the contacts varies depending on type of power provided.

	12 to 30 VAC		12 VDC	
No Power	ORG-GRN	WHT	ORG-GRN	WHT
Dry & Power	ORG-GRN	WHT	ORG	GRN-WHT
Wet & Power	ORG	GRN-WHT	ORG-GRN	WHT

**Status Indications & Operation**

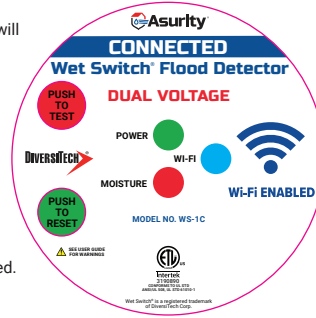
Normal State: When power is applied and no moisture is detected, the POWER LED will be lit green, and the MOISTURE LED will be OFF. See back for Wi-Fi Connection LED information.

Pressing the red PUSH TO TEST button simulates moisture detection and confirms proper function of Connected Wet Switch. MOISTURE LED will be lit red, and POWER LED will be OFF.

Press the green PUSH TO RESET button to return Connected Wet Switch to normal state.

When water is detected, the control circuit is opened, and the MOISTURE LED is lit red. Connected Wet Switch will remain in this state until the issue is corrected and the PUSH TO RESET button is pressed, or power is disconnected. Upon correcting the moisture issue, dry felt pad using an absorbent cloth. May use hair dryer on low for faster drying. Reset once dry.

**LED Indicators**  
Wi-Fi CONNECTION  
POWER  
MOISTURE  
**TEST & RESET Buttons**



**CONNECTED WET SWITCH® SPECIFICATIONS**

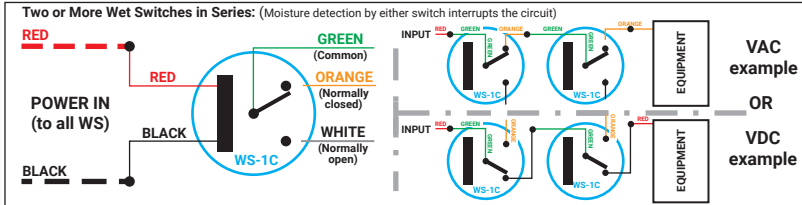
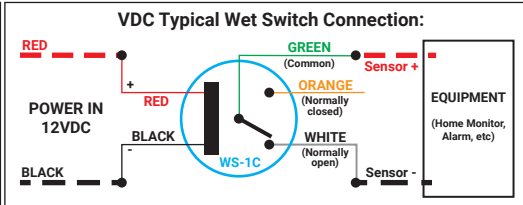
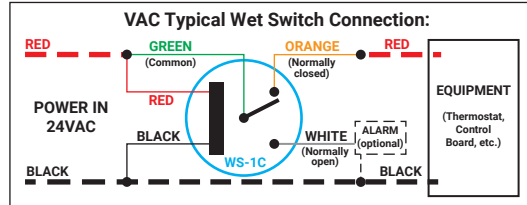
**LED INDICATORS:**

- Green:** Power On, Normal State
- Red:** Moisture Detected
- Blue:** Wi-Fi Connection Status

**POWER REQUIREMENTS:**

- 12 to 30 VAC, 50/60 Hz, 2.0 Watts max
- 12 VDC , 1.5 Watts max
- RELAY:** Isolated Contacts: 3 Amps (max) @ 240V, SPDT

- This product is intended to be installed and connected to a suitable power source, which employs appropriately rated current limiter, by qualified personnel.
- In a wet location, circuit rated above 16 VAC or 35 VDC can cause electric shock.
- Unit is not to be placed or kept under water.



\*Dashed lines indicate field wiring

**CONNECTED WET SWITCH® NOTIFICATIONS**

This device uses Email or SMS Text for notifications, by using nearby Wi-Fi to connect to a cloud server on the Internet. A report of the event is digitally signed by the device and sent to the server. The server verifies user data and sends a notification via Email or SMS Text. To ensure the device is operating correctly, it periodically reports operating status with the secure server, and if not functioning, a "device off-line" notification is sent.

NOTE: Your Wet Switch will operate and help protect against flooding even if notification feature is not setup or used.

## CONNECTED WET SWITCH® NOTIFICATIONS (cont.)

### Step 1 - Join the Connected Wet Switch Wi-Fi by scanning QR Code 1, then QR Code 2:

Scan the first QR code (QR 1) to join the device's network. **This is a network without internet access.** Wait 5-10 seconds or until you see a message stating that your Wi-Fi is "Connected without internet". The QR code can also be found on the side of the Connected Wet Switch.



Alternatively: Manually find the network with the same name as shown next to the QR 1 code label in your Wi-Fi settings. If you can not find your device's network, press the green "Reset" button, turn off the device, then turn it back on while holding the "Reset" button for about 10 seconds. Or, visit <https://smart.diversitech.com> and delete the device if it's listed there, which will delete the account and reset the device.

Scan the second QR code (QR 2) to access the Connected Wet Switch URL, which is <http://169.254.0.4/>. Open/join that link.

- You will see a new DiversiTech page with a "Success!" message, which means you have joined the Connected Wet Switch Wi-Fi network.
- Click on "Continue".

## Notification Setup (cont.)

### Step 4 - Review your User Account and Device settings in the DiversiTech Cloud:

- You will see a screen displaying the SSID and the Password of your Connected Wet Switch that will be added to your DiversiTech cloud User Account created in Step 3.
- Click on "Confirm" (if the next page does not automatically appear).
- You should see a new DiversiTech branded page stating that you have been successful at setting-up the Connected Wet Switch.
- Click on "Go to my Devices" at the bottom of the screen to view status and operational information about your device(s) and account settings. Consider bookmarking this page for easy access in the future.
- You may also scan the third QR code (QR 3) as a short cut to "Go to my Devices" DiversiTech cloud page.



### Optional - Test your Connected Wet Switch notification ability:

- Press the red "Test" button on your Connected Wet Switch to simulate a water event (or place some water under the device). You should receive a moisture notification alert via SMS text or email.

## Notification Status Indications

- The blue WI-FI CONNECTION LED indicates notification status.
- WI-FI LED ON: When fully setup, the notification LED will be fully on with occasional flickering.
- WI-FI LED slow blink: On initial power up, the notification LED blinks slowly indicating that the device is not connected to a WI-FI router. Please follow steps in Notifications Setup section.
- WI-FI LED fast blink: Indicates the device is connected to a WI-FI router, but the notification setup is not complete. Use the QR 3 code (or enter the https URL into your web browser) and follow the instructions to complete notification setup.

## Step 2 - Link the Connected Wet Switch to the Internet using the Wi-Fi network of your choice:

- You will see a new DiversiTech page with a list of Wi-Fi networks to choose from; refresh as needed to find your desired network.
- Select the desired network, click on the "Connect" button.
- On the next page, input the password to that Wi-Fi network.
- Click the "Connect" button at the bottom of the page.
- Next, you will see a "Connection successful!" page, with a thumbs up icon, meaning the network has allowed the Connected Wet Switch to connect to the Internet, enabling connection to the DiversiTech cloud.
- Click on "Continue" at the bottom of the page.
- If a "Failed Network" message appears instead, press "Go Back" and review and re-enter your password.



## Step 3 - Create a User Account in the DiversiTech Cloud (if needed):

- If you do not already have a User Account in the Diversitech Cloud, you will need to create one by following the instructions on your browser.
- If you already have a User Account, you will see a DiversiTech page confirming a successful connection.
- Click on "Continue".

## CONNECTED WET SWITCH® TROUBLESHOOTING

ISSUE	SUGGESTION
No LEDs are lit.	One or more LEDs will be lit whenever power is applied. Check power connection. If power is good, then replace device.
Notifications not received when moisture detected.	Is the blue WI-FI CONNECTION LED on? If not, then repeat Notification Setup procedure.
During Notification Setup, my Wi-Fi enabled device doesn't recognize or react to the QR codes.	Some Wi-Fi enabled devices don't have built-in QR code reader function. Or the QR code image may be smudged/damaged and not readable. It may be necessary to manually enter the QR code information which is printed in text below each QR code. The QR codes can also be found on the sides of Connected Wet Switch.
During Notification Setup, scanning QR 1 code fails to connect to the device.	Move closer to the device installation location and try again.
QR 1 not working/no SSID broadcast from device.	Press and hold RESET while powering on device - hold for 10 seconds after power is on then release. Scan QR 1 code again.
During Notification Setup, I don't see my router in the list of in-range routers.	Signal strength of the router may be insufficient to reach the device installation location. Move the router closer to the device or use a different router.
During Notification Setup, the device is not able to successfully connect to my router.	Ensure you are using the correct router password for the router you have selected.
I have changed email address or phone number and no longer received notifications.	Scan QR 3 code with computing device to go to server. Update your notification parameters.
I have changed router or router settings and no longer received notifications.	Press and hold RESET while powering on device - hold for 10 seconds after power is on then release. Scan QR 1 code, QR 2 code again.
I am receiving notifications that my device is off-line.	Is the blue WI-FI CONNECTION LED on? If not, then repeat Notification Setup procedure. If you no longer wish to receive notifications, then scan QR 3 code and update your notification preferences.