



TRX Series II

Next Evolution of the NTI Boilers

Available in:

85 to 199 MBH

Key Benefits:

- *Advanced User Interface with Easy Setup Wizard*
- *Simpler Wiring with Improved Junction Box*
- *NTI Net for Wi-Fi and Remote Connectivity*
- *Integrated ECM Primary Pump*
- *Combi and Heat Only Versions Available*

5-year parts/limited lifetime warranty on heat exchanger



UP TO **96%** EFFICIENT

TRX Series II

A NEXT LEVEL HEATING EXPERIENCE

| *New advanced system interface*

- | Easy to read 3.75" display
- | Intuitive menu navigation via central dial
- | Easy first installation with the setup wizard
- | Access through the menu to multifunction settings: time, zone, mode programming, holiday
- | Management of 2 zone pumps CH directly from display thanks to the new junction box with integrated outputs
- | Multi-temperature modulating control



ENDURING QUALITY INSIDE AND OUT

| Innovative XTRATECH™ heat exchanger enhancing durability

Made entirely from stainless steel, the TRX Series II heat exchanger utilizes a single formed, helically wound water tube coil, thereby enhancing durability by eliminating welds and potential failure points. With a large diameter, the single tube keeps pressure losses in check by offering a cross-sectional area more than 150% larger than other products in the market.

- | Innovative design for outstanding efficiency
- | Compact and extremely quiet package
- | Mono flow water tube design for increased water flow and internal turbulence
- | Scrubs internal wall surfaces, reducing heat exchanger deposits



TRX Series II

ACCESSORIES



Galvanized Floor Stands



N-Link



Heavy Duty Floor Stand



NTI Digital Room Sensor



0-10V / 4-20mA Clip-In Module

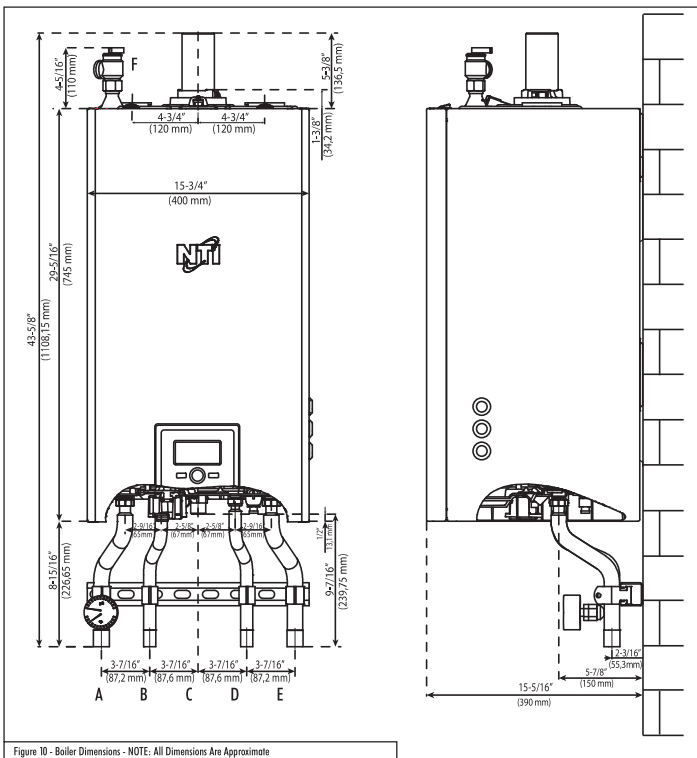


TRX / FTVN Low Loss Header



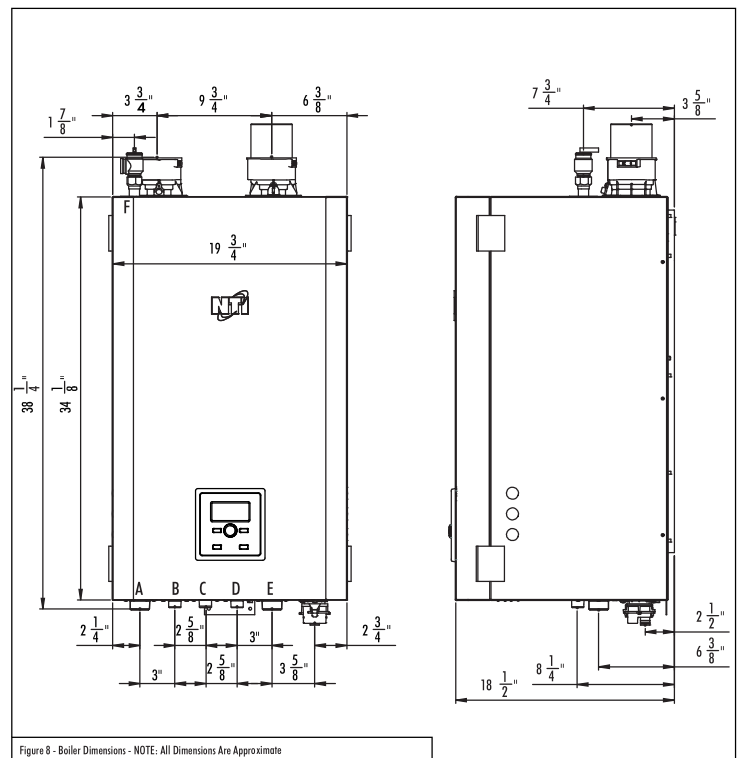
Heat Exchanger Coil Cleaning Tool

DIMENSIONS



Model	TRX085	TRX120	TRX110C	TRX150C
A - Central Heating Supply			1"	
B - Return from Indirect Water Heater		3/4"		
C - Gas Inlet		3/4"		
D - Domestic Hot Water Inlet	N/A		3/4"	
E - Central Heating Return		1"		
F - Pressure Relief Valve		3/4"		

Table 9 - Boiler Adapter Dimensions



Model	TRX150	TRX199	TRX199C
A - Central Heating Supply		1"	
B - Return from Indirect Water Heater		3/4"	
C - Gas Inlet		3/4"	
D - Domestic Hot Water Inlet	N/A		3/4"
E - Central Heating Return		1"	
F - Pressure Relief Valve		3/4"	

Table 9 - Boiler Adapter Dimensions

TRX Series II

SPECIFICATIONS

MODEL		TRX085	TRX120	TRX150	TRX199	TRX110C	TRX150C	TRX199C	
Order Code		3314216	3314218	3314306	3314307	3314217	3314219	3314308	
Capacity	Input Rating CH ¹	MBH	9.4-85	13.2-120	15-150	19.7-197	11.2-106	13.2-120	19.7-197
	Input Rating DHW ¹						11.2-114	13.2-150	
	Heating Capacity ^{1 2}		79	11	139	184	98	111	184
	Net AHRI Rating, Water ²		69	97	121	160	85	97	160
	Modulation (turndown)		Ratio	9:1		10:1		11:1	
Performance	AFUE	%	96	95			95.5	95	
DHW Flow	35°F Rise	GPM	N/A			5.9	7.8	10.5	
	45°F Rise					4.6	6.1	8.2	
	77°F Rise					2.7	3.5	4.8	
Venting Length ^{3 4}	2" Min-Max Exhaust	Ft	6-100						
	2" Min-Max Inlet		0-100						
	3" Min-Max Exhaust		6-150						
	3" Min-Max Inlet		0-150						
Volume	Water Content	Gallons	1.1	1.2	2	2.7	1.1	1.2	2.7
Weight	Approx "Full Boiler"	Lbs	88	89	115	130	91	93	135
	Shipping		78	84	115	130	83	84	135
	Safety Devices	Flame Rectifier Probe, Temperature Limit Control (190°F), Water Pressure Switch (Min. 8 PSI), Freeze Protection, Condensate Trap, Flue Temperature High Limit Sensor (199°F)							

¹ Listed Input and Output Ratings are at minimum vent lengths at an altitude of 0 - 2000 ft. Numbers will be lower with longer venting and/or altitudes greater than 2000 ft.

² Ratings based on standard test procedures prescribed by the US Department of Energy and certified to ANSI Z21.13/CSA 4.9

³ The TRX requires a special venting system. Use only the vent materials and methods detailed in these installation instructions.

⁴ It is permissible to use SS vent material, however, only PVC/CPVC/PP can be directly inserted into the appliance adapters.

distributed by:



**Products you need
from people who care**

NTI Boilers Inc.

30 Stonegate Drive, Saint John
New Brunswick E2H 0A4 Canada
Tel: 506-657-6000
Toll-free: 800-688-2575
Fax: 506-432-1135

Scan here for more details:



ntiboilers.com