

# Refrigeration Fan Motors

## MARS 3.3" Commercial Refrigeration Multi-Horsepower Motors

These motors replace hundreds of OEM shaded pole evaporator fan motors found in Bohn, Nutone, Chandler, Larkin, Kramer, Climate Control, McQuay, Heatcraft and reduce truck stock costs.

These PSC type motors deliver more power and lower amp draw compared to shaded pole.

**Features:**

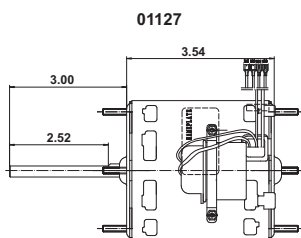
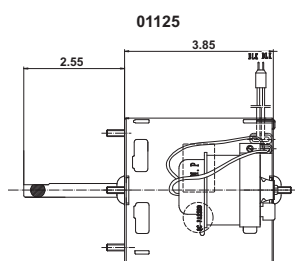
- Sleeve bearing, single speed
- Mounting - extended thru-bolt with nuts
- Low temp lubricant
- Capacitor included
- Open ventilation

**Specifications:**

- Class "B" insulation
- 60 Hz
- Thermal overload protected

**Replaces 12 Motor Ratings:**

- 1/12HP CW or CCW 115V or 230V
- 1/15HP CW or CCW 115V or 230V
- 1/20HP CW or CCW 115V or 230V



## MARS Super-Fit™ 3.3" Commercial Refrigeration Evaporator Fan and Blower Motors

**Application:**

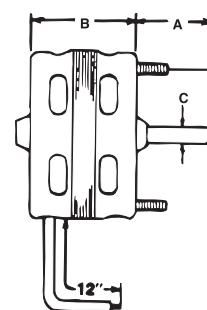
Can be used to replace virtually all popular 3.3" dia. commercial refrigeration evaporator fan motors.

**Features:**

- Adaptable to front or rear mount
- All angle operation
- Specially selected low temp. oil
- Full flattened black oxide shafts
- U.L. and C.S.A. recognized thermal protection

**Specifications:**

- Single phase, 60 Hertz
- Thermal overload protected
- 12 inch leads



**1550 RPM**

MARS NO.	HP	VOLTS	AMPS	ROT OLE	DIMENSIONS		
					A	B	C
09916	1/30	115	1.2	CW	2.50	2.96	5/16
09917	1/20	115	1.7	CW	2.50	2.96	5/16
09927	1/20	208/230	0.96	CW	2.50	2.96	5/16

**1550 RPM**

MARS NO.	HP	VOLTS	ROT	AMPS	CAP INCLUDED	SHAFT LENGTH AND DIAMETER
01125	1/12, 1/15, 1/18	208-230	CW LE	0.56/0.50	4 MFD 370V	2.55 x 5/16
01127	1/12, 1/15, 1/20	115/230	REV	1.1/0.60	7.5 MFD 370V	3.00 x 5/16